

Metal bellows coupling I Series KG / KG-VA

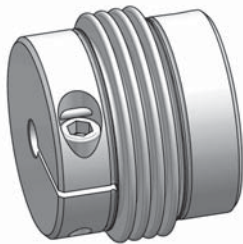
- /// 4-corrugation bellows // very short design // torsional stiff
- /// all- steel- version – up to 350°C // wear and maintenance free
- /// simple installation - with easy- clamping hub (size 5/10/20 - optional)

alternative: KG-VA

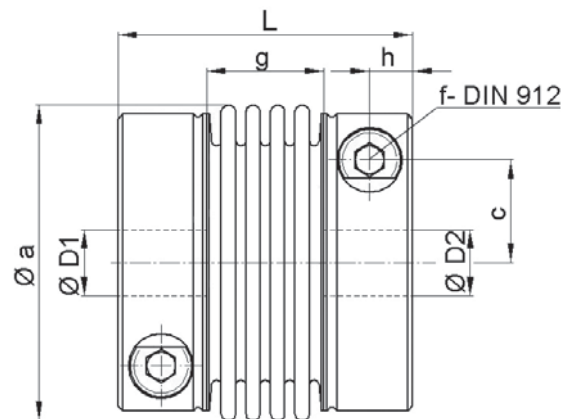
stainless steel

Technical data:

KG KG-VA size	T _N [Nm]	moment of inertia [10 ⁻³ kgm ²]	torsional stiffness [Nm/arcmin]	max. shaft displacement (mm) axial ± lateral		axial spring rate [N/mm]	lateral spring rate [N/mm]	mass approx. [kg]	tightening torque of screws [Nm]
5	5	0,004	0,9	0,3	0,1	75	400	0,06	2
10	10	0,019	2,1	0,4	0,15	85	400	0,14	5
20	20	0,044	3,4	0,4	0,15	55	360	0,22	10
40	40	0,18	9	0,6	0,2	70	450	0,5	16
80	80	0,44	14	0,6	0,2	70	600	0,9	40
140	140	0,74	20	0,6	0,2	110	1200	1,1	40
220	220	1,22	28	0,7	0,2	95	1000	1,5	80
350	350	2,6	52	0,8	0,2	90	1300	2,4	135
700	700	5,4	106	0,8	0,2	140	2800	3,4	135
1300	1300	24	225	0,7	0,2	160	2100	8,5	300



Material: bellows: stainless steel 1.4571
 KG-hubs: steel St 52
 KG-VA-hubs: 1.4301/V2A
 screws: DIN 912 – nickel plated



Notice: Connection between bellows and hub: with plasma welding-process

Dimensions: (mm) length dimensions according to DIN ISO 2768 cH

KG KG-VA	Øa	c	f	g	h	L	ØD1/2min	ØD1/2max
5	24	7,3	M 3	10	4,5	29	6	11
10	34	10,5	M 4	16	5	38	8	16
20	39,5	13	M 5	17	6	43	10	20
40	56	18	M 6	23	7,5	55	12	32
80	66	22,5	M 8	24	9	61	14	35
140	71	27	M 8	25	9	62	18	42 [40]
220	82	27,5	M 10	28	11,5	73	20	42
350	101	32	M 12	30	12,5	82	22	50 [52]
700	122	40	M 12	37	11,5 [13]	85 [89]	42	64 [68]
1300	157	54	M 16	40	17,5	111	50	90

Versions with longer metal bellows or special hubs are possible if specially required by customer.

Ordering example: KG 40 - D1 = 16^{G7} D2 = 24^{H7}
 KG - VA 220 - D1 = 32^{G7} D2 = 35^{G7} stainless steel version