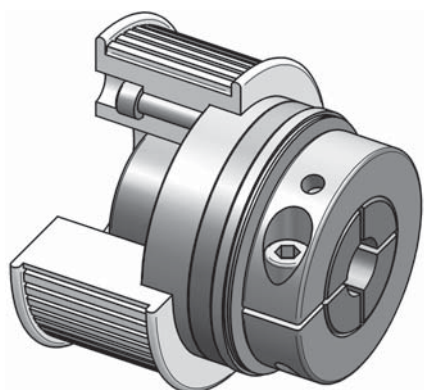


## Safety coupling I Series SKX-L for indirect drives

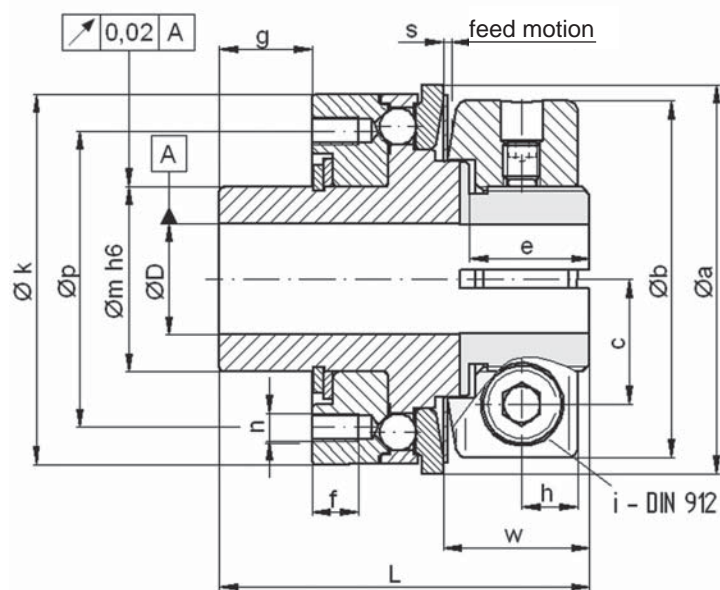
- ✓ with longer bearing journal for integrated slide bearing
- ✓ simple installation with clamping ring hub
- ✓ with small centric diameter of small size pulleys, gear wheels

Technical data:

SKX-L size	setting range disengagement torque $T_{KA}$ [Nm]		moment of inertia [ $10^{-3} \text{kgm}^2$ ]	mass approx. [kg]	tightening torque of screws i [Nm]		bore diameters $\varnothing D$		
							prebored	min	max
6	2	- 6	0,05	0,25	M 5	- 10	6	6	16
12	6	- 12						8	16
15	8	- 15	0,25	0,65	M 6	- 18	10	10	25,4
30	13	- 30						12	25,4
45	22	- 45						14	25,4
60	25	- 60	0,95	1,5	M 8	- 40	17	18	35
100	40	- 100						18	35
150	60	- 150						24	35
230	80	- 230						24	42
330	130	- 330	3,34	3	M 10	- 80	21	32	42
500	200	- 500	10,70	6	M 14	- 220	27	28	58
800	350	- 800						40	58



Material: heat-treated steel  
bearing seat: nitro carbonized



Dimensions: (mm) length dimensions according to DIN ISO 2768 cH

SKX-L	$\varnothing a$	( $\varnothing a^*$ )	$\varnothing b$	c	e	f	g	h	$\varnothing k$	$\varnothing m^{h6}$	$\varnothing p$	L	6xn	s	w
6/12	42	(48)	38,5	13,5	13	5	10	6	40	20	32	46	M3	0,9	15,8
15/30/45	60	(66)	53	19,5	15	7	15	7,5	58	30	46	52	M4	1,2	18,6
60/100/150	76	(83)	68	25,5	18,5	9	20	8,5	75	42	62	69	M6	1,6	22,4
230/330	104	(109)	87	32	21	12	25	10,5	98	50	74	84	M8	1,8	26,7
500/800	132	-	115	42	30	14	30	13,5	120	65	92	104	M10	2,5	37

\* bigger outer diameters of the thrust plate are possible (see values in brackets).

\*\* alternativ bearing length „g“ are possible on request; please check if a plain bearing bush is required.

Ordering example: SKX-L 150 - D =  $\varnothing 28^{H7}$  -  $T_{KA} = 120 \text{ Nm}$