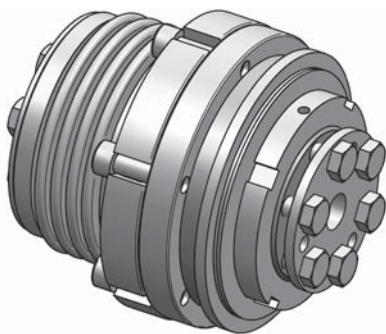


Safety coupling I Series SKY - KS for direct drives

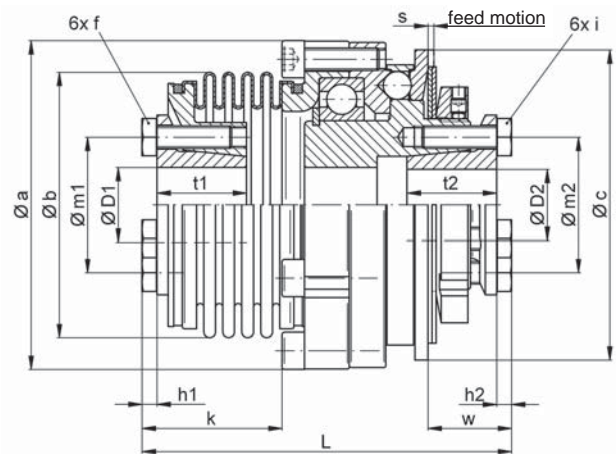
- /// with bellow attachment for direct drives // with conical clamping hub on both sides
- /// low restoring forces // compensation of misalignments

Technical data:

| SKY - KS size | setting range disengagement torque T_{KA} [Nm] | moment of inertia $[10^{-3}kgm^2]$ | mass approx. [kg] | torsional stiffness [Nm/arcmin] | max. shaft displacement [mm] | | tightening torque of screws | | $\varnothing D1$ | | $\varnothing D2$ | |
|---------------|--|------------------------------------|-------------------|---------------------------------|------------------------------|---------|-----------------------------|----------|------------------|-----|------------------|------|
| | | | | | axial \pm | lateral | f [Nm] | i [Nm] | min | max | min | max |
| 6 | 2 - 6 | 0,12 | 0,5 | 2,1 | 0,5 | 0,15 | M4[3] | M3[2] | 6 | 16 | 5 | 11,5 |
| 12 | 6 - 12 | | | | | | | | 6 | 16 | 5 | 11,5 |
| 15 | 8 - 15 | 0,44 | 0,98 | 9 | 0,5 | 0,2 | M4[4] | M4[4] | 9 | 19 | 9 | 17 |
| 30 | 13 - 30 | | | | | | | | 9 | 19 | 9 | 17 |
| 45 | 22 - 45 | | | | | | | | 10 | 19 | 10 | 17 |
| 60 | 25 - 60 | 1,4 | 1,9 | 20 | 0,6 | 0,2 | M6[14] | M6[14] | 12 | 25 | 12 | 25 |
| 100 | 40 - 100 | | | | | | | | 12 | 25 | 12 | 25 |
| 150 | 60 - 150 | | | | | | | | 14 | 25 | 14 | 25 |
| 230 | 80 - 230 | 5,1 | 3,9 | 28 | 0,8 | 0,2 | M6[14] | M6[14] | 18 | 35 | 18 | 35 |
| 330 | 130 - 330 | | | | | | | | 22 | 35 | 22 | 35 |
| 500 | 200 - 500 | 12,5 | 6,7 | 52 | 0,8 | 0,2 | M8[34] | M8[34] | 28 | 42 | 28 | 42 |
| 800 | 350 - 800 | 14,6 | 7,7 | 106 | 0,7 | 0,2 | M10[65] | M8[34] | 30 | 48 | 30 | 44 |
| 1000 | 500 - 1000 | 58 | 16 | 80 | 1 | 0,3 | M10[65] | M12[115] | 40 | 60 | 40 | 70 |
| 2000 | 800 - 2000 | 69 | 18,5 | 140 | 1 | 0,3 | M12[115] | M12[115] | 42 | 70 | 42 | 70 |
| 3000 | 1500 - 3000 | 70,5 | 19 | 260 | 1,4 | 0,2 | M12[115] | M12[115] | 48 | 70 | 48 | 70 |



Material:
 safety part: heat treated steel
 clamping hub: high tensile aluminium
 bellows: stainless steel
 screws: nickel plated



Dimensions: (mm) length dimensions according to DIN ISO 2768 cH

| SKY - KS | $\varnothing a$ | $\varnothing b$ | $\varnothing c$ | h1 | h2 | k* | L ± 1 | $\varnothing m1$ | $\varnothing m2$ | s | t1 | t2 | w |
|------------|-----------------|-----------------|-----------------|-----|-----|------|-----------|------------------|------------------|-----|------|----|----|
| 6/12 | 52,5 | 39,5 | 48 | 4 | 3 | 37,5 | 80 | 27 | 19 | 0,9 | 19 | 15 | 14 |
| 15/30/45 | 69 | 56 | 66 | 2,8 | 4 | 34,8 | 86 | 30 | 27 | 1,2 | 18 | 18 | 18 |
| 60/100/150 | 88 | 71 | 83 | 4 | 4 | 37,5 | 99 | 36 | 36 | 1,6 | 24 | 24 | 22 |
| 230/330 | 115 | 82 | 109 | 4 | 4 | 40 | 117 | 50 | 50 | 1,8 | 27 | 27 | 24 |
| 500 | 137 | 101 | 132 | 5,3 | 5,3 | 45,8 | 138 | 62 | 62 | 2,5 | 32,5 | 32 | 33 |
| 800 | 137 | 122 | 132 | 6,4 | 5,3 | 60 | 152 | 70 | 62 | 2,5 | 36 | 32 | 33 |
| 1000 | 181 | 132 | 185 | 6,4 | 7,5 | 85 | 208 | 83 | 98 | 3,7 | 44 | 45 | 64 |
| 2000/3000 | 181 | 157 | 185 | 7,5 | 7,5 | 88,5 | 211 | 98 | 98 | 3,7 | 45 | 45 | 64 |

* Notice: alternative length are possible on request

Ordering example: SKY - KS 500 - D1 = 38^{H7} - D2 = $\varnothing 32$ ^{H7} - $T_{KA} = 400$ Nm