

29001

Vertical Collet Vices

HOFMANN

Type

Basic body lacquered RAL 7035 light grey, union nut and clamping lever burnished. Collets are not supplied.

Application

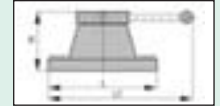
For quick fixing of workpieces with push-type collets. Suitable for drilling and milling machines, tapping tools and with measuring devices.

Note:

Collets with round borehole see cat.-no. 21568 - 21571.

Collets with 4-point and 6-point profiles available on request.

29001



Clamping range d mm	B mm	H mm	L x L1 mm	n1 mm	for collet type	29001 ...
3 - 42	135	100	210 x 347	14	173 E	103
4 - 60	170	120	260 x 385	18	185 E	104

29003 - 29004

Horizontal-Vertical Circular Indexing Unit Type HRTE 165/HRTU 165

Type

With three-jaw lathe chuck. Circular indexing table made of high-quality Meehanite cast iron, reliable and precise thanks to precision tapered roller bearing. Large spindle opening, for clamping longer workpieces. Direct indexing by means of locking disc for higher speeds of mass production components. 24 positions (15° graduation), 7 locking discs for 2 / 3 / 4 / 6 / 8 / 12 / 24-x graduations. Incl. of Mounting disc with 3 grooves.

29003 101

HRTE 165

Type

Degree indexing by means of 360° scale.

29004 101

HRTU 165

Type

Degree indexing by means 360° scale with crank and vernier.

29003

NEW



Cat.-no.	29003 101	29004 101
Type	HRTE 165	HRTU 165
Three-jaw lathe chuck Ø	165 mm	165 mm
Construction height	200 mm	221 mm
length x width	218 x 260 mm	235 x 250 mm
Height of points	130 mm	130 mm
Mounting disc Ø	203 mm	203 mm
Clamping Ø jaws max.	210 mm	210 mm
Opening	36 mm	36 mm
Weight	32,5 kg	48,0 kg

Type	29003 ...	29004 ...
HRTE 165	101	
HRTU 165		101

29004



29005

Height adjustable Tailstocks Type HRST

29005 101

HRST 1

Application

For circular indexing table HRT 150 see cat.-no. 29210 102.

29005 102

HRST 2

Application

For circular indexing table HRT 200 see cat.-no. 29210 103 and circular indexing unit HRTE 165 see cat.-no. 29003 101 and HRTU 165 see cat.-no. 29004 101.

29005

NEW



Type	Height of points mm	29005 ...
HRST 1	97 - 101	101
HRST 2	103 - 106	102

www.atorn.com



Performance requires quality.

Digital slide callipers by ATORN:

- high-quality materials
- maximum precision
- quick and reliable measuring results
- waterproof and with best resilience

This is but one example of ATORN's high-quality measuring tools.

ATORN

• Indexing units • Dividing units • Three-Jaw Lathe Chuck

29006 - 29007

Vertical-Horizontal Dividing Heads

Type

For direct indexing and indexing in degrees. Angled base plate for horizontal and vertical work. With 24-register index plate for 2 / 3 / 4 / 6 / 8 / 12 and 24 divisions.

29006

Type

Index locking for all graduations. With three-jaw lathe chucks, with inside and outside jaws, concentricity in compliance with DIN 6350.

29007

HOFMANN

Type

With rapid clutch. The desired index is selected by a stop in connection with the scale. The indexing operation is then performed by moving the lever back and forth. Indexing accuracy +/- 60 sec. (accumulated error). Indexing spindle suited for mounting of lathe chucks, rotary tables or collet chucks. Standard version without the mentioned mounting tools.

Note:

Rotary tables, collet chucks, lathe chucks For cat.-no. 29007 and bushings available on request.



29006



29007

Size	Height of points mm	for lathe chuck Ø borehole Ø mm	for rotary table Ø mm	for collet chuck mm	Base plate mm	29006	...	29007	...
2	125	160/42	-	-	275 x 215/130	102			
3	125	125	160	4 - 24	250 x 240/133			101	
4	160	200	250	8 - 40	300 x 310/145			102	

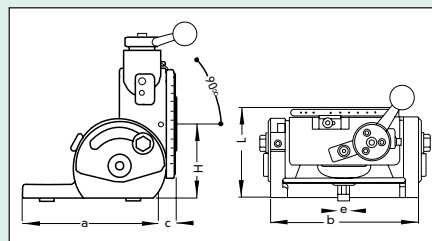
29012

Indexing Units Type EST

walter

Type

Swivelling 90°. Other than that, similar to type VT W cat.-no. 29009. **Three-jaw lathe chuck not include** (see cat.-no. 29019).



29012

Size	H mm	L mm	a mm	b mm	c mm	e mm	max. Spindle opening Ø mm	Weight kg	29012	...
EST 2	80	115	155	182	27	14	26	14	101	
EST 4	125	152	230	252	32	16	42	37	102	

www.atorn.com



Performance requires quality.

Multiple clamps by ATORN:

- high-strength materials
- quick and exact clamping of multiple workpieces
- highest clamping force

This is but one example of ATORN's high-quality clamping tools.



29019

Three-Jaw Chucks

walter

Type

With 3 ea. outside and inside diameter jaws, taper shank and back plate.

Application

An accessory for indexing units cat.-no. 29012.

Note:

Collet chucks, collets, special index plates, drivers, fixed and adjustable tailstocks, face plates and support blocks available on request.

29019



2

for size	Ø max. mm	29019 ...
2	125	101
2	140	102
4	160	103
4	200	104

29041

Semi-Universal Indexing Units Type HTH

HOEFMANN

Type

For direct and indirect indexing, and indexing by degrees:

Direct indexing with exchangeable index plate (2 to 36 registers).

Indirect indexing by index plates and worm gear.

Swivellable spindle head from 0° to 90°.

Standard accessories:

1 direct index plate with 24 registers, 1 index plate for graduation up to 50.

Note:

The following accessories are available on request: fixed and adjustable tailstocks, lathe centres, and drive tangs (chucks see cat.-no. 29051). Indexing units for spiral milling available on request.

29041



Type	Height of points mm	29041 ...
HTH-100	100	101
HTH-125	125	102
HTH-160	160	103

29051

Three-Jaw Chucks

HOEFMANN

Type

With 3 ea. outside and inside diameter jaws and back plate.

Application

For indexing units cat.-no. 29041 and 29047.

29051



Type	Ø mm	29051 ...
100	100	101
125	125	102
160	160	103

www.atorn.com



Performance requires quality.

A-Cut recessing systems by ATORN:

- high-quality materials
- a flexible system for various application ranges
- quick exchange of the recessing tools

This is but one example of ATORN's high-quality turning tools.

ATORN

• Rotary tables • Indexing units

29210 - 29211

Horizontal-Vertical Circular Indexing Tables Type HRT

29210 101-103

Type

Circular indexing table made of high-quality Meehanite cast iron, reliable and precise thanks to precision bearing. Large spindle opening, for clamping longer workpieces. Quick indexing by means of locking disc for higher speeds of mass production components. Worm gear hardened and ground, leverage ratio 90 : 1. Working table graduated 360°, 1 revolution of the hand wheel equals 4° pivoting. Graduation is possible by means of scaled hand wheel with vernier.

29211 101

Chuck flange

Application

For circular indexing table HRT 150
see cat.-no. 29210 102.

29211 102

Chuck flange

Application

For circular indexing table HRT 200
see cat.-no. 29210 103.

29211 103

Three-Jaw Chucks

Type

Diameter 130 mm.

Application

For circular indexing table HRT 150
see cat.-no. 29210 102.

29211 104

Three-Jaw Chucks

Type

Diameter 165 mm.

Application

For circular indexing table HRT 200
see cat.-no. 29210 103.

NEW

29210 101



Cat.-no.	29210 101	29210 102	29210 103
Type	HRT 100	HRT 150	HRT 200
Lathe centre	MT 2	MT 2	MT 3
Disc size	Ø 110 mm	Ø 150 mm	Ø 200 mm
Construction height	72 mm	79 mm	104 mm
length x width	138 x 118 mm	204 x 156 mm	265 x 199 mm
Height of points	80 mm	102 mm	133 mm
Groove width and quantity	11 mm/3	11 mm/4	16 mm/4
Weight	9 kg	12 kg	30 kg

Type	29210	...	29211	...
HRT 100			101	
HRT 150			102	
HRT 200			103	
Chuck flange for HRT 150				101
Chuck flange for HRT 200				102
Three-jaw lathe chuck for HRT 150				103
Three-jaw lathe chuck for HRT 200				104

www.atorn.com



Performance requires quality.

Short chucks by ATORN:

- high-strength materials
- perfect concentricity accuracy
- large clamping range
- high clamping force

This is but one example of ATORN's high-quality clamping tools.

ATORN®

29212

Indirect Indexing Units Type HIT

29212 101

HIT 150

Type

Incl. of 3 index plates, sector arm, angle cutter with spring steel sheet.

Application

For circular indexing table HRT 150 see cat.-no. 29210 102 and circular indexing unit HRTU 165 see cat.-no. 29004 101.

29212 102

HIT 200

Type

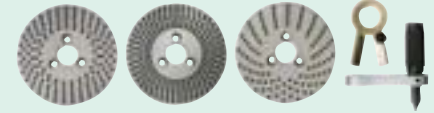
Incl. of 2 index plates, sector arm, angle cutter with spring steel sheet.

Application

For circular indexing table HRT 200 see cat.-no. 29210 103.

NEW

29212 101



Type	29212	...
HIT 150	101	
HIT 200	102	

29220

Small Rotary Tables Type RH

HOFMANN

Type

Sturdy and precise construction, flat design and low weight. With measuring drum for angle settings in degrees, minutes and seconds. Adjustable worm gear, eccentrically mounted in the housing.

Application

Specially designed for engraving and light milling machines.

29220



Table-Ø mm	Head room mm	Gear ratio	Reading and setting resolution	Indexing accuracy	Vernier	Weight approx. kg	29220	...
100	65	1:60	10 min.	+/- 2 min.	-	7	101	
150	75	1:60	12 sec.	+/- 1 min.	x	15	102	
200	75	1:90	6 sec.	+/- 30 sec.	x	19	103	

29231

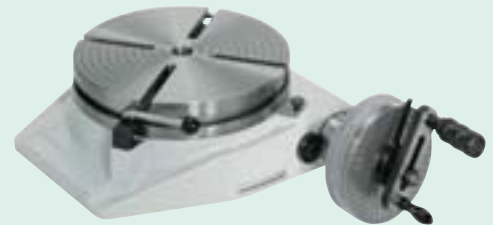
Rotary Tables RI

HOFMANN

Type

With indirect indexing and coolant collection trough. Indexing accuracy +/- 15 sec. Manually operated rotary tables for horizontal use on machine tools.

29231



Type	Table Ø mm	29231	...
RI-250	250	101	
RI-320	320	102	
RI-400	400	103	
RI-500	500	104	
RI-630	630	105	

29236

Tilting Precision Rotary Tables HPRS

HOFMANN

Type

With indirect indexing. Indexing accuracy +/- 10 sec. in the rotating axis and +/- 60 sec. in the tilting axis. With measuring drum/vernier for use on machine tools as well as for measuring and testing instruments. Tilting range 0° to 90°.

29236



Type	Table Ø mm	29236	...
HPRS-250	250	101	
HPRS-320	320	102	
HPRS-400	400	103	
HPRS-500	500	104	
HPRS-630	630	105	

HOFMANN NC Precision Indexing Units Typ RW/NC · RS/NC · RSM



NC indexing unit modular system for the addition of a 4th axis or for retrofitting with control and hydraulics unit.

Construction types

- Height of centres 75, 100, 125, 160, 220, 300 and 450 mm
- Face plate diameters 80, 100, 150, 200, 250, 320, 400, 500, 630, 800 and 1000 mm.
- For use on machining centres, milling machines, measuring instruments, grinding machines, engraving machines and laser machines and under special construction for use on erosion machines.

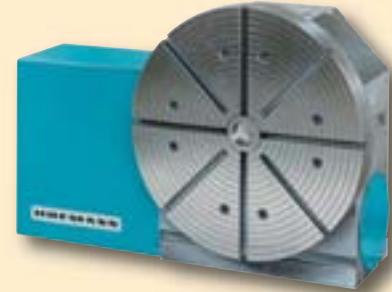
Types

- Type RW/NC** standard version as one-axis NC indexing unit
- Type RW/NC** 2 to 4-spindle, one-axis indexing unit
- Type RS/NC** swivelling NC indexing unit with 2 NC axis, available also with 2-4 rotation axis
- Type RSM** swivelling NC indexing unit with manual swivelling axis

Technical characteristics

- Use with horizontal or vertical rotation axis
- Hydraulic spindle clamping system for high-speed machining forces
- Use of high precision bearings
- Worm gear adjustable
- Splash-proof
- Spindle type with **ST** 30, 40, 50, **HST** 32, 40, 50, 63, 80 and 100, **MT** 2, 3, 4, 5, 6
- Direct measuring systems possible
- Servo motor in compliance with customer request as 4th axis
- Positioning control and hydraulic unit as retrofit available on request

Please contact us!



Accessories

- Face plate
- Three and four-jaw chucks, also available power-operated
- Collet chuck
- Tailstocks, manually or hydraulic operated



29517

Precision Micrometer Tables

Type

With dovetail guideways. Made of special cast iron, chucking surface and guides ground. Surface accuracy 0,03 mm. dovetail guides adjustable by means of guide strips. Knurled trapezoidal thread spindles with axial bearings. Scale drums with zero-point adjustment, direct reading. Graduation 0,05 mm. Tables starting at 450 x 240 mm with drain gutter, and clamping lever for both axes, so that a clamping is possible in any position.

29517 101



29517 104



Size	Table area L x W mm	Base area L x W mm	Overall height mm	Travel long. mm	Travel trans. mm	T-slot width mm	Distance between T-slots mm	Load capacity kg	Weight approx. kg	29517 ...
1	300 x 160	160 x 160	78	180	100	10	50	75	16	101
2	450 x 240	259 x 200	126	275	155	14	60	280	52	102
3	580 x 240	259 x 200	126	375	155	14	60	280	60	103
4	650 x 270	365 x 200	140	450	250	14	70	300	90	104



► 4th and 5th Axes Upgrade or Retrofitting

walter

NC rotary tables and NC indexing units

for

- Conventional drilling and milling machines
- Milling machines
- Engraving machines
- Erosion machines
- Vertical and horizontal machining centres
- Measuring jobs



TAWN 160 NEGi

4th axis mounted on a vertical machining centre
control via M-function



TANiS 125 NEG-CNC

4th axis with 1-axis
CNC-control



NC Indexing Units Type TAWN NC Rotary Table Type RTWN

walter

NC indexing units and NC rotary tables for positioning and for round machining

Construction size:

Height of centres 125, 200, 250 mm face
plate diameters 250, 280, 355 mm for usage
with machining centres, milling machines,
grinding machines and for measuring
projects

Types:

TAWN Height of centres 125 mm
RTWN Height of centres 200, 250 mm
Motor attachment type
O, U, W, Z for all types

Technical characteristics:

- for working with horizontal/vertical
table axis
- hydraulic table clamping
- preclamped axial-radial cylinder roller
bearings
- completely splash-proof
- reference point switch
- spindle types in ISO 40, 50, MT 5 available
on request (TAWN)
- indirect and direct mounting of measuring
systems
- servo motor in compliance with customer
request
- indexing accuracy in the following accuracy
classes: +/- 15 inch, +/- 5 inch, +/- 2,5 inch

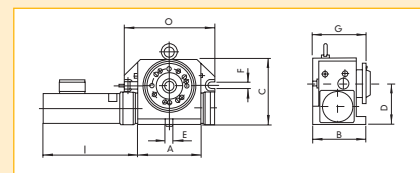
Accessories:

- Face plate
- 3-lathe chuck (manual, hydraul., pneum.)
- Collet chucks (manual, hydraul., pneum.)
- Tail stock (manual and hydraul.)
- Turning operations
- Clamping bridges
- Clamping blocks
- NC rotary tables up to a centre height of 800
and a table diameter of up to 3000 mm.

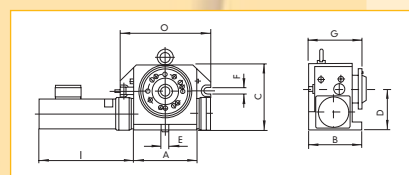


TAWN 125

Size sheet TAWN 125



Size sheet RTWN 200



**Prospectus and quotes
available on request.**



RTWN 200, 250

► NC Indexing Unit Type TANI NEG-CNC walter

i

Type TANI NEG - CNC

with 1-axis CNC control,
positioning via M-function or remote switch,
resolution: 0,001°

Worm gear drive and AC servo motor,
rotational speed of table: 25 rpm
Indexing accuracy: +/- 15 inch
Fail-safe splash guard
pneum. clamping with control



Accessories:

Motor safety cover, face plate,
1-axis CNC control, T-slot nuts 14 mm,
2 clamps, test certificate, operation manual.

Please contact us!

► NC Indexing Units Type TANI walter

i

NC indexing unit as modular system for
positioning and for round machining

Construction size:

Height of centre 80, 125, 160, 200 mm
Face plate diameters 100, 200, 250, 320 mm
for usage with
Vertical machining centres,
Milling machines,
Engraving and laser machines,
for grinding and erosion machines.

Types:

Type TANI	standard version
Type TANI2-4	2- and multi-spindle
Type TANI3	manually swivellable
Type TANI2S	2-axis NC indexing unit
Type TANI2S2-4	multi-spindle 2-axis NC indexing unit

Motor attachment type O, U, W, Z
for all types

Technical characteristics:

- for working with horizontal axis
(retrofit as vertical type possible)
- Pneumatic spindle locking,
hydraulic spindle locking
- preclamped axial-radial cylinder roller bearings
- completely splash-proof
- mechanical reference point switch
- Spindle types in ISO 40, 50,
MT 5 available on request
- Indirect mounting of measuring systems
- Servo motor in compliance with customer request
- Accuracy +/- 15 inch

Accessories:

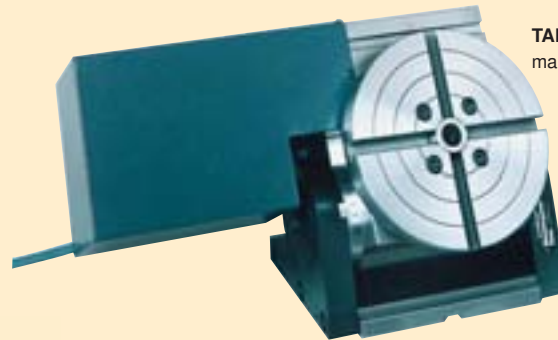
Face plate
3-jaw chuck (manually, hydraul., pneum.)
Collet chucking (manual, hydraul., pneum.)
Footstock (manual and hydraul.)
Turning operations
Clamping bridges
Clamping blocks

Please contact us!

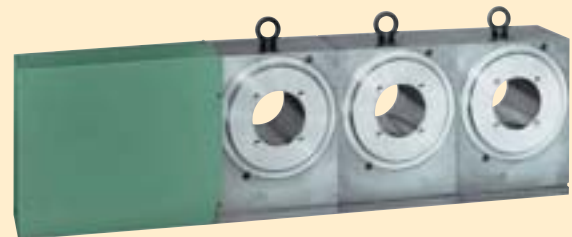
TANI
Basic
instrument



TANI3
manually swivellable



TANI3
3-spindle type



TANI2S2 125 NEG
2-spindle 2-axis type