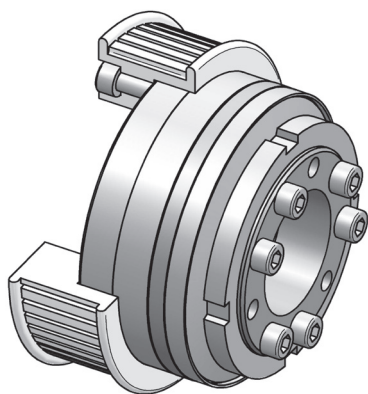


Safety Coupling I Series SKG *for indirect drives*

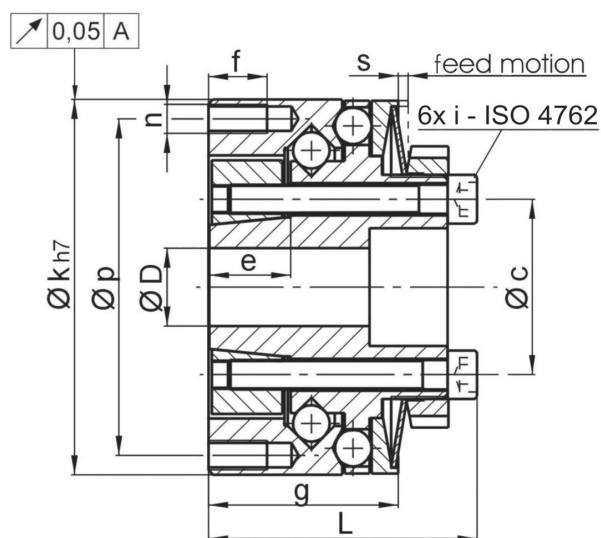
- /// with integral ball bearing // with conical clamping hub
- /// compact attachment - optimal system integration

technical data:

| SKG size | setting range disengagement torque T_{KA} [Nm] | | moment of inertia [10^{-3} kgm ²] | mass approx. [kg] | tightening torque of screws i [Nm] | bore diameters $\varnothing D$ | |
|-------------|--|-----|--|-------------------------|--|-----------------------------------|------|
| | min | max | | | | min | max |
| 4 | 2 | 4 | 0,2 | 0,5 | M 4 - [4] | 12 | 18 |
| 9 | 4 | 9 | 0,2 | 0,5 | | | |
| 18 | 9 | 18 | 0,2 | 0,5 | | | |
| 23 | 9 | 23 | 0,7 | 1,1 | M 5 - [8] | 18 | 25,5 |
| 35 | 18 | 35 | 0,7 | 1,1 | | | |
| 75 | 25 | 75 | 0,7 | 1,1 | | | |
| 100 | 50 | 100 | 1,8 | 1,9 | M 6 - [12] | 22 | 39 |
| 170 | 65 | 170 | 3 | 2,4 | | | |
| 270 | 100 | 270 | 10,4 | 5 | | | |
| 550 | 200 | 550 | 10,7 | 5,3 | M 8 - [35] | 29 | 44 |



material:
heat-treated steel
temperature range: -30°C up to +200°C



Dimensions [mm]: length dimensions according to DIN ISO 2768 cH

| SKG | $\varnothing c$ | e | f | g | $\varnothing k_{h7}$ | L | n | $\varnothing p$ | s |
|-----|-----------------|----|----|------|----------------------|----|--------|-----------------|-----|
| 4 | 27 | 11 | 8 | 27,3 | 60 | 40 | 4x M 4 | 53 | 1 |
| 9 | 27 | 11 | 8 | 27,3 | 60 | 40 | 4x M 4 | 53 | 1 |
| 18 | 27 | 11 | 8 | 27,9 | 60 | 40 | 4x M 4 | 53 | 1 |
| 23 | 37 | 17 | 12 | 39 | 77 | 54 | 4x M 6 | 69 | 1,4 |
| 35 | 37 | 17 | 12 | 39 | 77 | 54 | 4x M 6 | 69 | 1,4 |
| 75 | 37 | 17 | 12 | 39 | 77 | 54 | 4x M 6 | 69 | 1,4 |
| 100 | 54 | 17 | 10 | 36,5 | 92 | 55 | 4x M 6 | 83 | 1,4 |
| 170 | 54 | 17 | 12 | 51 | 105 | 66 | 4x M 6 | 94 | 1,7 |
| 270 | 66 | 26 | 15 | 63,5 | 135 | 85 | 6x M 8 | 120 | 2,2 |
| 550 | 66 | 26 | 15 | 63,5 | 135 | 85 | 6x M 8 | 120 | 2,2 |

order example: SKG 170 - 28^{H7} - $T_A = 140$ Nm