



Metal Bellows Coupling I Series KPP

- /// plug-in design // simple installation // EASY-clamping hub
- /// high torsional stiffness // backlash-free, precise torque transmission
- /// sturdy whole metal version

technical data:

KPP size	T _N [Nm]	moment of inertia [10 ⁻³ kgm ²]	torsional stiffness [Nm/arcmin]	max. shaft misalignment (mm)		axial spring rate [N/mm]	lateral spring rate [N/mm]	mass approx. [kg]	tightening torque of screws f i [Nm](*)	axial preload force approx. [N]
10	10	0,033	2	0,6	0,15	20	93	0,15	8 -	30
20	20	0,17	4,6	0,5	0,2	70	480	0,38	14 -	110
35	35	0,17	5	0,5	0,2	70	480	0,38	14 -	110
60	60	0,34	8	0,6	0,2	70	650	0,60	35 (30)*	110
100	100	0,46	12	0,6	0,2	120	1200	0,66	35 (30)*	180
170	170	0,90	19	0,8	0,2	100	1000	0,95	65 (50)*	150
270	270	2,2	31	0,8	0,2	95	1350	1,6	115 (90)*	140
400	400	2,4	45	0,7	0,2	135	1500	1,7	115 (90)*	200
600	600	5,8	67	0,7	0,2	145	3000	2,7	180 (140)*	220

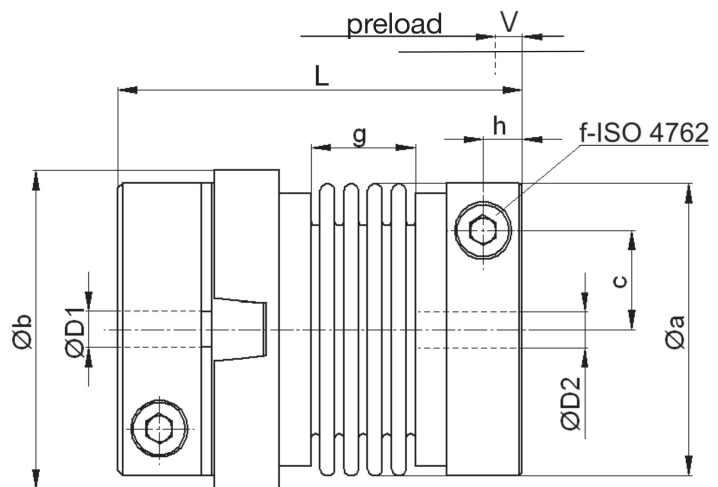
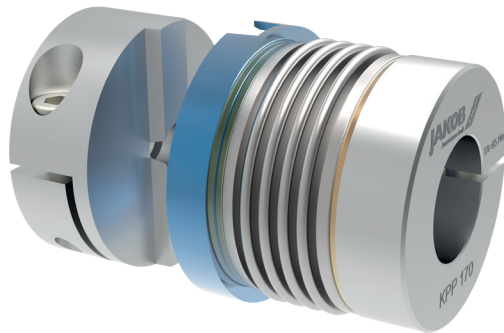
(*) note: reduced tightening torque for bigger hub bore diameter - see also Ø D 1/2max!
temperature range: -40°C up to +200°C

material:

bellows: stainless steel

hubs: high-tensile strength aluminum

screws: ISO 4762 / 12.9



Dimensions [mm]: length dimensions according to DIN ISO 2768 cH

KPP	Øa	Øb	c1/c2	f	g	h1/h2	V	L**	ØD1 min-max	ØD2 min-max
10	40	43	13 / 13	M 5	18	6 / 6	1-1,5	62	6-20	6-19
20	56	61	19 / 19	M 6	21	8 / 8	1-1,5	77,5	8-30	8-32
35	56	61	19 / 19	M 6	21	8 / 8	1-1,5	77,5	10-30	10-32
60	66	71	22 / 22	M 8	23	8,5 / 9	1-1,5	85,5	13-28 (34)*	13-28 (35)*
100	71	75	25 / 25	M 8	23,5	8,5 / 9	1-1,5	86	14-34 (38)*	14-34 (38)*
170	82	87	28,5 / 28,5	M 10	28	11 / 11,5	1-1,5	99,5	18-35 (43)*	18-35 (43)*
270	101	106	35 / 35	M 12	29	12 / 15	1-1,5	106,5	25-45 (55)*	25-45 (55)*
400	101	106	35 / 35	M 12	33	12 / 13	1-1,5	110,5	28-45 (55)*	28-45 (55)*
600	122	126	43,5 / 42	M 14	36	13,5 / 16	1-1,5	122,5	32-55 (70)*	32-55 (68)*

* note: reduced tightening torque for bigger hub bore diameter - see also Ø D 1/2max!

**delivery length (± 1mm) – without preload -> see function description. Further sizes and lengths available on request.

note: size KPP 1300 with conical clamping hub on request

order example: KPP 170 - D1 = 28^{G7} D2 = 35^{H7}