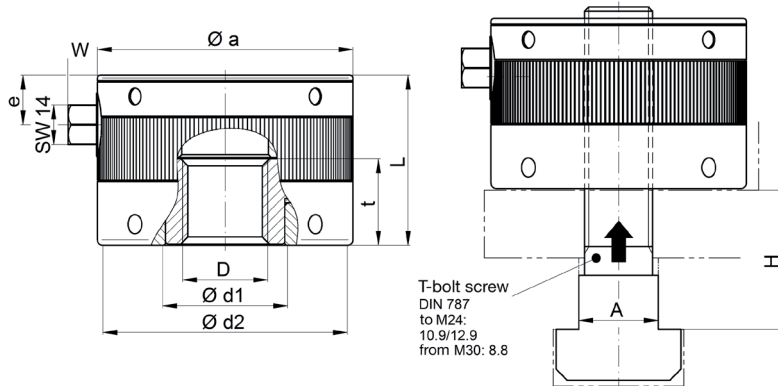


Mechanical Power Clamping Nut I Series MDR

Series MDR // side operation // low profile // with through-hole thread

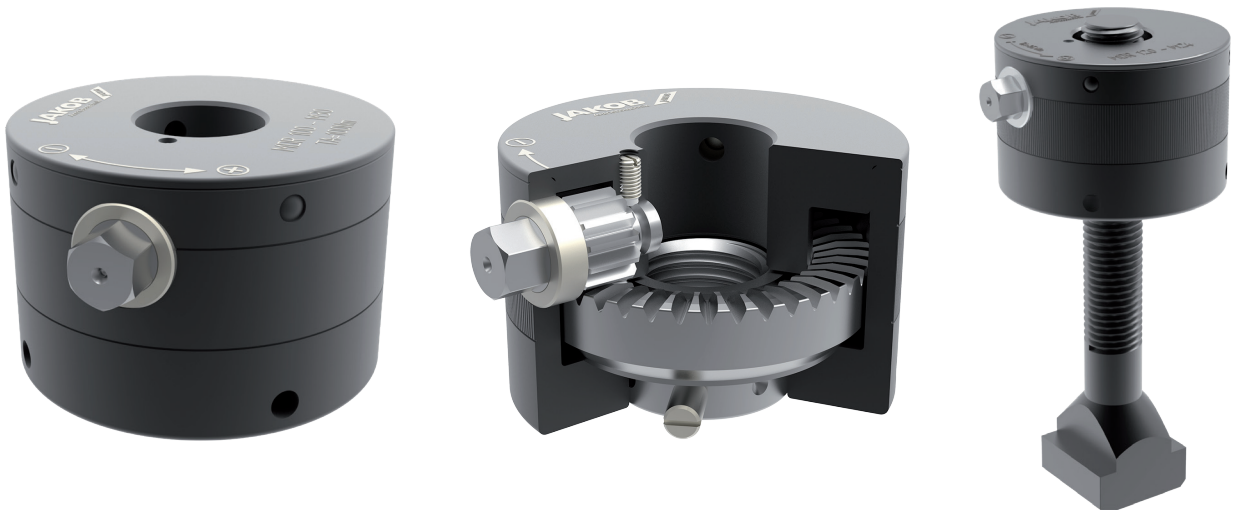


Technical data and dimensions [mm]: length dimensions according to DIN ISO 2768 mH

MDR Size	nominal clamping force [kN]	thread D* (6G)	max. actuation torque [Nm]	T-Nut A	max. static load [kN]	weight approx. [kg]	Øa	Ød1	Ød2	e	L	t
120	120	M 16	65	18	130	2,2	90	44	86	17,5	60	30
		M 20	90	22	200							
		M 24	95	28	240							
150	150	M 24	100	28	300	4,2	120	50	115	17,5	65	35
		M 30	110	36	300	4,1						
		M 36	115	42	300	4,0						

*property class of threaded bolt up to M24 min. Q 10.9; from M30 Q 8.8 (further thread sizes i.e. inches on request)
standard thread tolerance „6G“

max. allowed temperature range: -30°C up to +200°C



ordering example: Clamping nut MDR 150 - M 36
Incl. T-slot screw MDR 120 - M 30 - 100 - 36

series and size _____
thread size (T-slot screw thread according to DIN 787) _____
clamping height (H=100) _____
groove width (A=36 mm) _____