



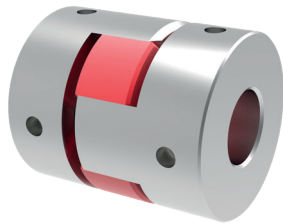
Miniature Elastomer Coupling I Series MJT/MJT-C

- /// MJT-C: standard series with lateral clamping hub
- /// MJT: cost-effective version with set screws
- /// plug in
- /// oscillation dampening

technical data:

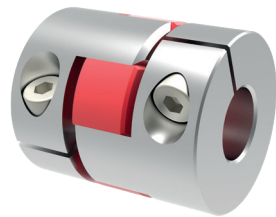
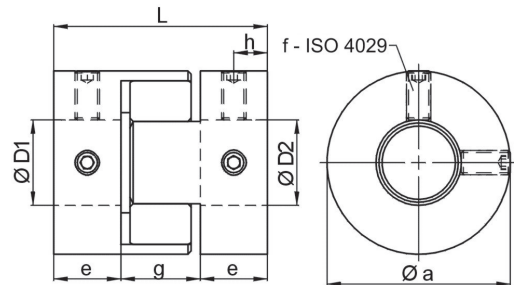
| MJT/ MJT-C size | T _N [Nm] | max. speed [min ⁻¹] | | moment of inertia [10 ⁻⁶ kgm ²] | | torsional stiffness [10 ⁻³ Nm/arcmin] | max. shaft mis- alignment (mm) | | mass approx. [g] | tightening torque of screws [Nm] | |
|-----------------------|------------------------|------------------------------------|--------|---|-------|---|-----------------------------------|---------|---------------------|-------------------------------------|-----|
| | | MJT | MJT-C | MJT | MJT-C | | axial ± | lateral | | f | i |
| 14-B | 0,7 | 27.000 | 11.000 | 0,21 | 0,16 | 3 | 0,6 | 0,15 | 7 | 0,7 | 0,5 |
| 20-B | 1,8 | 20.000 | 7.500 | 1,0 | 1,1 | 5 | 0,8 | 0,20 | 18 | 0,7 | 1 |
| 30-B | 4 | 13.000 | 5000 | 5,9 | 6,2 | 13 | 1,0 | 0,20 | 48 | 1,7 | 2,5 |
| 14-R | 2 | 27.000 | 11.000 | 0,21 | 0,16 | 7 | 0,6 | 0,10 | 7 | 0,7 | 0,5 |
| 20-R | 5 | 20.000 | 7.500 | 1,0 | 1,1 | 16 | 0,8 | 0,10 | 18 | 0,7 | 1 |
| 30-R | 12,5 | 13.000 | 5.000 | 5,9 | 6,2 | 38 | 1,0 | 0,10 | 48 | 1,7 | 2,5 |

temperature range: -20°C up to +70°C

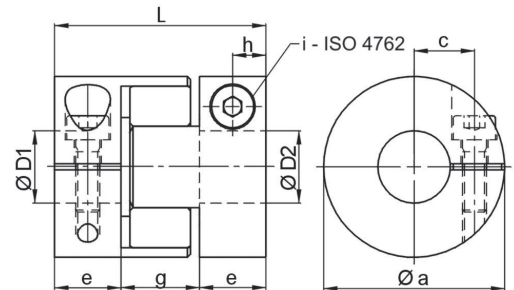


Series MJT

material:
hubs: aluminum
elastomer spider: polyurethane
B 80-Sh-A (blue), R 98-Sh-A (red)



Series MJT-C



Dimensions [mm]: length dimensions according to DIN ISO 2768 cH

| MJT/MJT-C | Øa | c | e | g | h | L | f | i |
|-----------|----|-----|----|----|-----|----|--------|-------|
| 14 | 14 | 4 | 7 | 8 | 3,5 | 22 | 2x M 3 | M 2 |
| 20 | 20 | 6,5 | 10 | 10 | 5 | 30 | 2x M 3 | M 2,5 |
| 30 | 30 | 10 | 11 | 13 | 5,5 | 35 | 2x M 4 | M 4 |

stock bores D1/D2 (H8)

• MJT ◊ MJT-C

| MJT/MJT-C | Ø3 | Ø4 | Ø5 | Ø6 | Ø6,35 | Ø8 | Ø9,53 | Ø10 | Ø12 | Ø14 |
|-----------|-----|-----|-----|-----|-------|-----|-------|-----|-----|-----|
| 14 | • ◊ | • ◊ | • ◊ | • | | | | | | |
| 20 | | ◊ | • ◊ | • ◊ | • ◊ | • ◊ | • | • | | |
| 30 | | | | | | • ◊ | • ◊ | • ◊ | • ◊ | • |

note: further bore sizes possible on request
for easier disassembly of the MJT series, we recommend to have end faces on the shaft

temperature correction for nominal torques

| -20°C up to +30°C | +50°C | +70°C |
|-------------------|-------|-------|
| 100% | 75% | 60% |

order example: MJT-B30 - D1 = 8^{H8} D2 = 10^{H8} MJT-C-R 20 - D1 = 5^{H8} D2 = 6^{H8}