

MACHINE MODEL

VELOX 350 AF-NC

CNC automatic circular machine for aluminium

Short description

VELOX 350 AF-NC is the IMET automatic numerical control sawing machine, ideal tool for cutting alloys and aluminum, VELOX 350 AF-NC performs cuts from 45 ° left to 45 ° right and inclined up to 45 ° and is suitable for cutting of tubes and full sections.

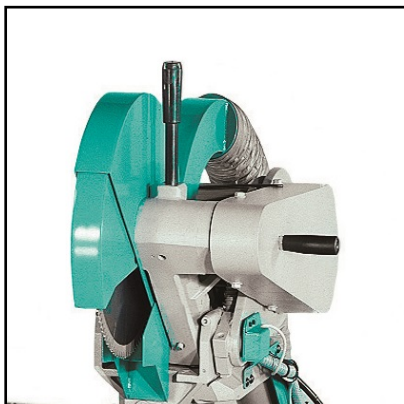


Scan the video



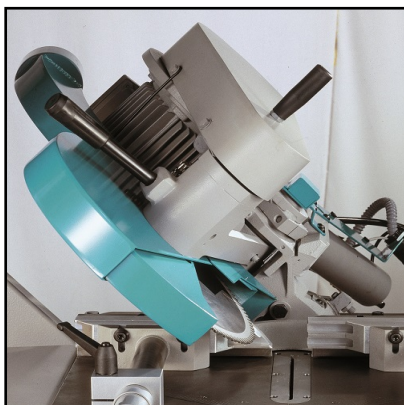
Cutting capacity at 0°	Round: 120mm - Square: 105mm - Rectangular: 200x80mm
Cutting capacity at 45° left	Round: 115mm - Square: 100mm - Rectangular: 150x80mm
Cutting capacity at 45° right	Round: 115mm - Square: 100mm - Rectangular: 150x80mm
Cutting capacity at 45° inclined	Round: 65mm - Square: 60mm - Rectangular: 180x50mm
Blade speed	3600rpm
Blade diam.	350mm
Blade motor	2.2KW
Feeder stroke	520mm
Min. scrap end	355mm
Min. lenght in automatic cycle	15mm
Worktable height	930mm
Coolant tank capacity	40l
Weight	607kg
Dimensions	1800x1450x1950mm

Features



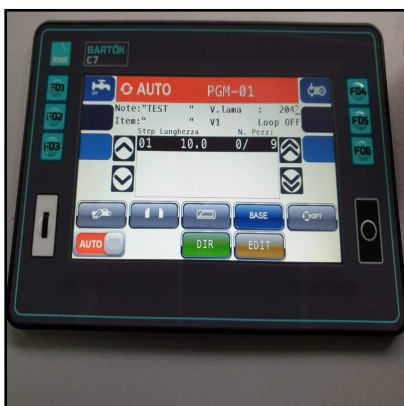
Head in cast iron

The cutting head of VELOX 350 AF-NC is in cast iron, monobloc to avoid vibrations. The vertical pneumatic vertical piston allows a better locking of the piece to be cut.



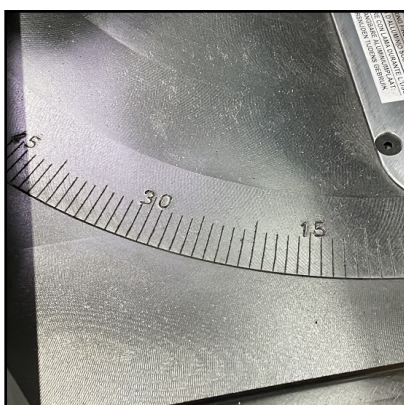
Vertical cutting

VELOX 350 AF-NC can perform cuts up to 45 ° from the vertical.



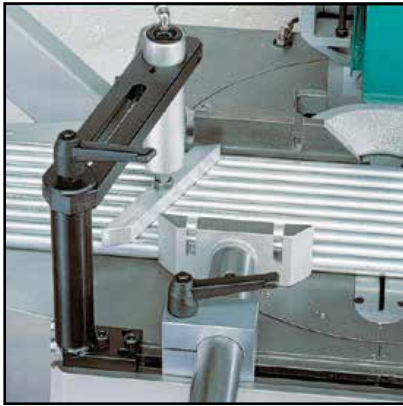
Touch screen display

Through the 7-inch touch screen display (with simple and intuitive graphics to optimize the user-experience it is possible to set and control all the machine parameters; the interface allows you to set up cutting projects with different quantities and lengths on the same bar and visualize any errors during the cutting process



Automatic stops

VELOX 350 AF-NC is equipped with automatic stops at 0 °, 15 °, 30 ° and 45 ° on the right and on the left, additional locking handwheel for any other angle.



Frontal vices

VELOX machines have two pneumatic front vices that slide transversely on the work surface.



Feeder

Feeder has a max. stroke of 520mm and it's placed on a floating plate to move better the not linear material. The stroke is done through hardened guides.



Longer feeder (Optional)

OPTIONAL

Longer feeder of 1200mm for VELOX AF-NC for automatic production.



SLB6000 Barloader (Optional)

OPTIONAL

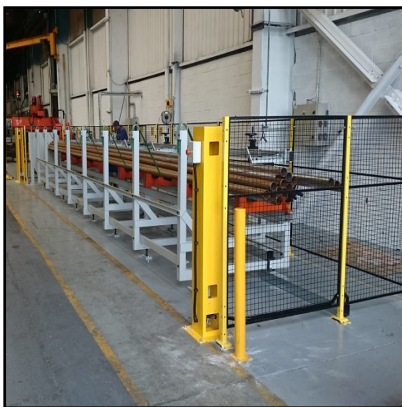
Barloader for SIRIO 370 AF-NC: suitable for tubes (20mm-90mm), square (80x80mm), for solids (max 50mm). The structure in metal profiles, the front protection in tubular and perforated sheet guarantee maximum protection for the operator. Fully automatic, the management system allows you to optimize your job. Length 6m.



SLB3000 Barloader (Optional)

OPTIONAL

Barloader for SIRIO 370 AF-NC: suitable for tubes (20mm-90mm), square (80x80mm), for solids (max 50mm). The structure in metal profiles, the front protection in tubular and perforated sheet guarantee maximum protection for the operator. Fully automatic, the management system allows you to optimize your job. Length 3m.



Bundles barloader (Optional)

OPTIONAL

The bundle loader allows you to load a bundle from 48mm to 90mm max. by chain transmission. Managed by CNC numerical control, it is compatible with CNC automatic disc machines and allows to load up to 3 tons of bars with a length of 6m.



V jaws (Optional)

OPTIONAL

Two pairs of cast iron V jaws to fittings bundles and round bars (max diameter 90 mm.) with tools to mount them



Bar loader reduction kit(Optional)

OPTIONAL

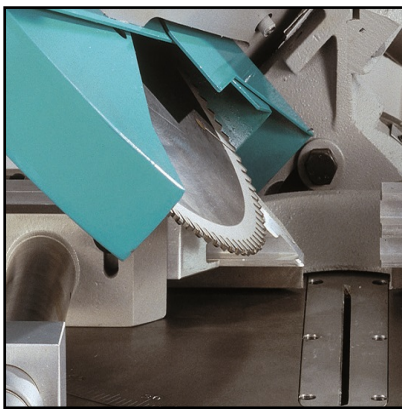
Bar loader reduction kit(FROM 20 TO 10MM) for barloader



Industry 4.0 - SAWFACTORY (Optional)

OPTIONAL

All IMET automatic sawing machines can be connected to the company network via modem and ethernet cable: SAWFACTORY software is also available for remote monitoring, assistance, programming and management from remote of the cutting process. The software allows to transfer data and programs from the PC (where it is created the programm) to the machine via USB. Discover SAWFACTORY: <https://bit.ly/2RuxHuX>



Blade (Optional)

OPTIONAL

VELOX 350 uses a HSS steel blade with hard metal teeth, diameter 350x3,2x32mm with 32mm hole.



Chips suction plant (Optional)

OPTIONAL

Chips suction plant complete of magnetothermic switch and flexible tube 1,5KW.



Connection for loading side (Optional)

OPTIONAL

Connection between machine and loading table, length 1m.



Loading/Unloading roller tables 1st unit (Optional)

OPTIONAL

1st unit of roller conveyor compatible for both the loading and unloading sides. Length 2m, loading capacity 140kg.



Titolo Loading/Unloading roller tables follow.unit (Optional)

OPTIONAL

Following unit of roller conveyor compatible for both the loading and unloading sides. Length:2m, loading capacity:120kg.



PVC V rollers (Optional)

OPTIONAL

Pairs of V rollers made in PVC for tubes, max 6 pairs per each element 2 m long, to be used on machines with V jaws, without rollers cover (only for RTS) (not available together with RI-W30) Pair of containment vertical rollers 300 mm made in steel, max 2 pairs for each element



PVC vertical rollers (Optional)

OPTIONAL

Pair of containment vertical rollers 300 mm made in PVC, max 2 pairs for each element 2 m long; to use without rollers cover (only for RTS) (not available together with RV-W30)