

## Positioning system for laser marking

Are you also tired of complicated manual positioning on your laser marking machine?



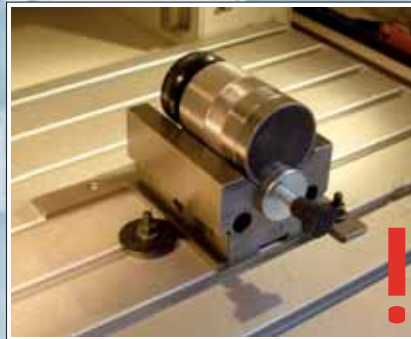
No repeatability!



Tiring work!



Complicated re-positioning for each order!



High costs due to long set-up times!

With the new AMF positioning system, AMF offers you a solution to all of these problems!



- ▶ Building-block principle
- ▶ Drawer system
- ▶ Positioning accuracy 0.1 mm
- ▶ Repeatability 0.1 mm
- ▶ Modular structure
- ▶ Ergonomic

## One system ► Six positioning methods

Thanks to the drawer system, ergonomic work methods are possible at all times!

### 1 With magnets



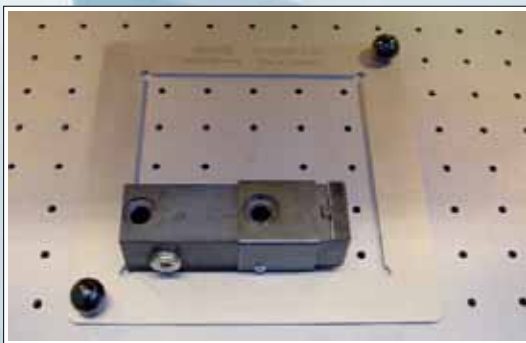
- Quick positioning on the base plate
- Useable for one-time acquisition tasks
- Can be unloaded using magnets

### 2 With stop angle



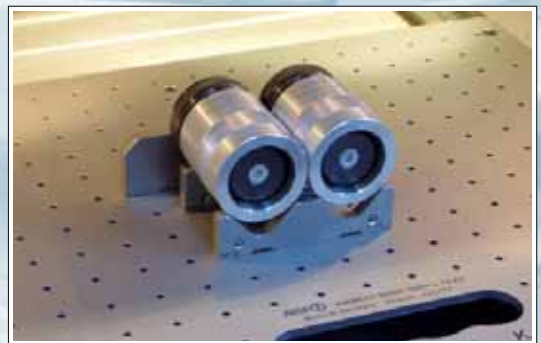
- Quick positioning within the written field
- Versatile uses
- Suitable for various written field sizes
- Fastening to the base plate by means of positioning pins

### 3 With positioning frame



- Special top frame sizes for each written field size
- Quick positioning within the written field
- Fastening to the base plate by means of positioning pins

### 4 With positioning elements



- Can be fastened to base plate
- For diameter ranges from 5 to 100 mm
- Cylindrical pieces can be positioned horizontally and vertically
- Positioning and stop elements

### 5 With contour templates



- Positioning of workpieces with complicated external geometric shapes
- Can be supplied in customer-specific design

### 6 With shaped supports



- Positioning of workpieces with complicated external geometric shapes
- Can be supplied in customer-specific design

## No. 2700 Positioning system for laser marking, basic set

Positioning base plate made of stainless steel with magnetic characteristics.  
Basic set consists of:

- Positioning base plate on guide rails
- Fastening elements
- Stop angle
- 4 positioning magnets
- 2 positioning pins

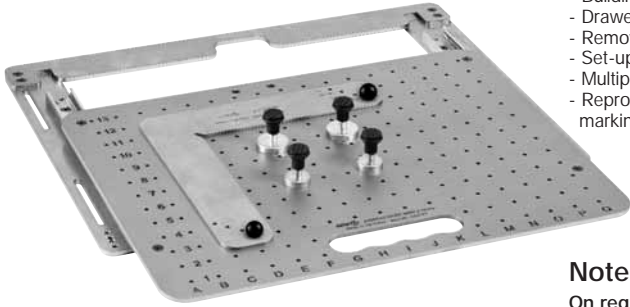
Order no.	L x B x H	max. load [kg]	Pull-out length AL [mm]	g
305797	487 x 360 x 24	25	246	10 429

### Application:

The positioning system is fastened to the customer's machine table. Ergonomic insertion of the parts to be marked by pulling out the positioning table. Can be used on all laser marking machines on the market.

### Advantages:

- Positioning and repeatability precision of 0.1 mm
- Building-block principle
- Drawer system, permits ergonomic work methods
- Removable positioning base plate for marking larger components
- Set-up time minimised thanks to exact positioning
- Multiple variants due to simple, modular design (grid spacing 25x25mm)
- Reproducible marking position due to co-ordinate marking on the positioning table and marking of the positioning elements



### Note:

On request, it can be supplied according to your available table size.

## No. 2700S Positioning system for laser marking, fixed version

Positioning base plate made of stainless steel with magnetic characteristics.  
Basic set consists of:

- Positioning base plate
- Fastening elements
- Stop angle
- 4 positioning magnets
- 2 positioning pins

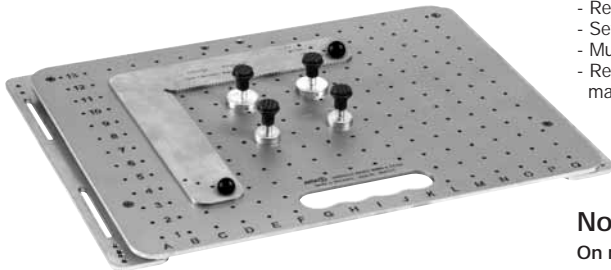
Order no.	L x B x H	g
305870	487 x 360 x 11	8064

### Application:

The positioning system is fastened to the customer's machine table. Can be used on all laser marking machines on the market.

### Advantages:

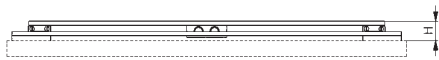
- Positioning and repeat accuracy of 0.1 mm
- Building-block principle
- Removable positioning base plate for marking larger components
- Set-up time minimised thanks to exact positioning
- Multiple variants due to simple, modular design (grid spacing 25x25mm)
- Reproducible marking position due to co-ordinate marking on the positioning table and marking of the positioning elements



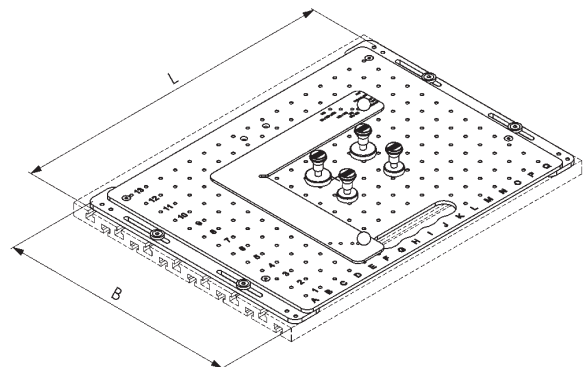
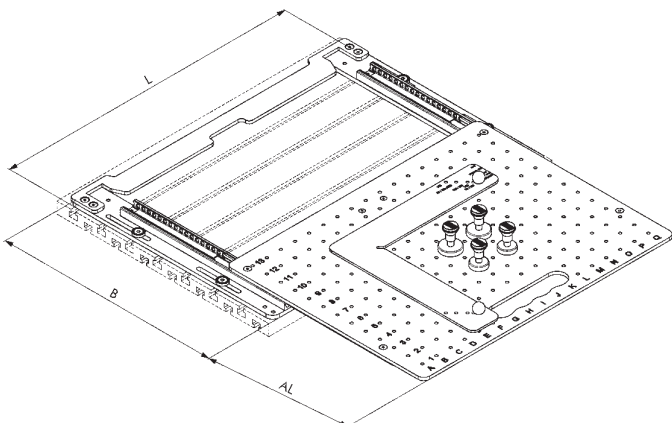
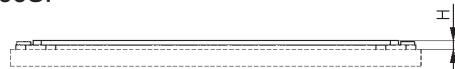
### Note:

On request, it can be supplied according to your available table size.

No. 2700:



No. 2700S:



Specifications subject to change.

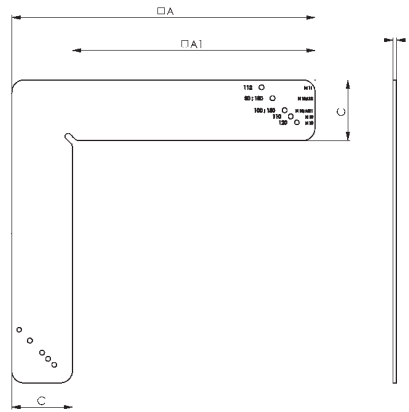
## No. 2700AW Stop angle

Stainless steel.  
For positioning within the written field; fastening by means of positioning pins (order no.: 305615).

For written field sizes:  
 - 80 x 80 mm      - 120 x 120 mm  
 - 100 x 100 mm   - 150 x 150 mm  
 - 110 x 110 mm   - 180 x 180 mm  
 - 112 x 112 mm



Order no.	□ A	□ A1	B	C	g
305581	250	200	3	50	520

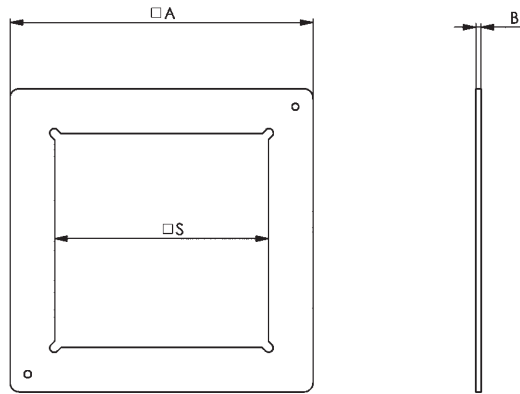


## No. 2700AR Stop frame

Stainless steel.  
Useable for various written field sizes.  
For positioning within the written field; fastening by means of positioning pins (order no.: 305615).



Order no.	□ A	B	Written field □ S	g
305565	162		112 x 112	320
305532	170		120 x 120	339
305540	220	3	150 x 150	606
305557	220		180 x 180	374

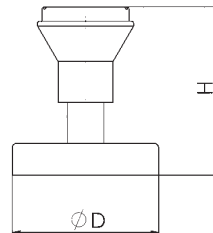


## No. 2700PM Positioning magnets

For fast positioning and removal of the parts to be marked.



Order no.	∅D	H	Holding force [N]	g
305607	25	36	40	11
305599	32	37	80	33

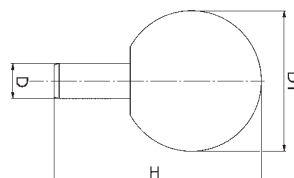


## No. 2700PS Positioning pins, in pairs

For fastening of templates, stop angles and stop frames.

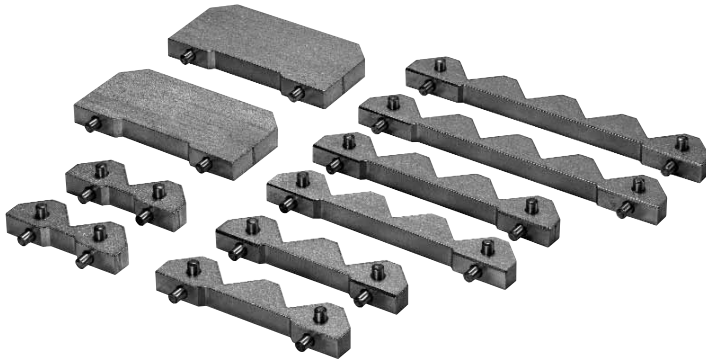


Order no.	D	D1	H	g
305615	4	16	24	8



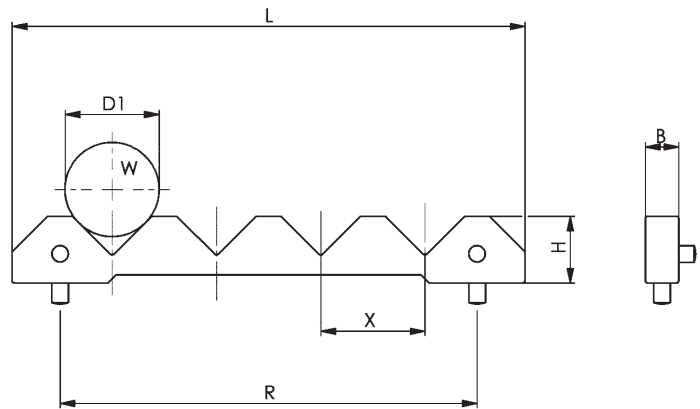
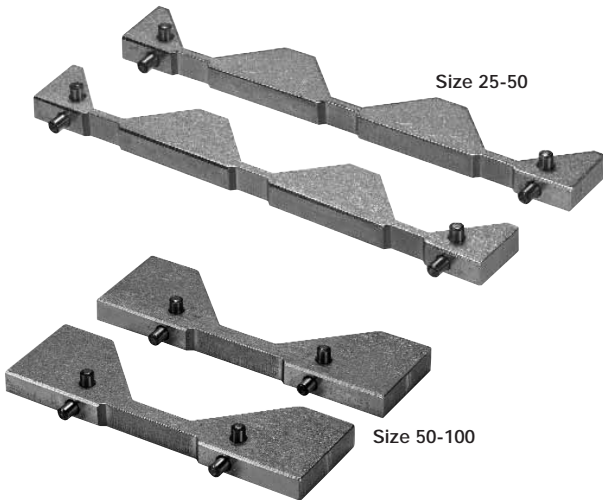
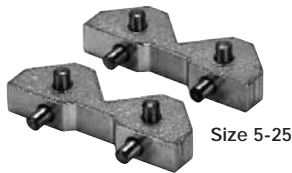
**No. 2700P Positioning set for cylindrical parts**  
 Fits positioning base plate with grid spacing 25 x 25 mm. The support V-blocks are included as pairs in the positioning set. Two stops are supplied with each positioning set.

Order no.	Diameter ranges [mm]	Number of position elements	g
305805	5 - 25	1 - 4	818
305821	25 - 50	1 - 3	760
305847	50 - 100	1 - 2	1068



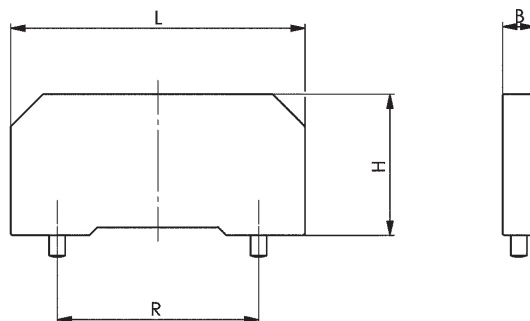
**No. 2700AP Support V-block, in pairs for cylindrical parts**  
 Fits positioning base plate with grid spacing 25 x 25 mm. For positioning cylindrical workpieces in horizontal and vertical marking position. Various combinations. Precision cast parts with hardened cylinder pins.

Order no.	ØD1	B	H	L	R	X	Number W	g	
305862	5 - 25	8	16	48	25	25	1	78	
305888				73			50	2	110
305904				98			75	3	144
305920				123			100	4	178
305946	25 - 50	8	20	48	25	50	1	76	
305961				98			75	2	150
305987				148			125	3	226
305813	50 - 100	8	20	98	50	50	1	252	
305839				198			150	2	508



**No. 2700AE Stop element**  
 Fits positioning base plate with grid spacing 25 x 25 mm. Precision casting with hardened cylinder pins.

Order no.	L x B x H	R	g
305854	73 x 8 x 35	25	154

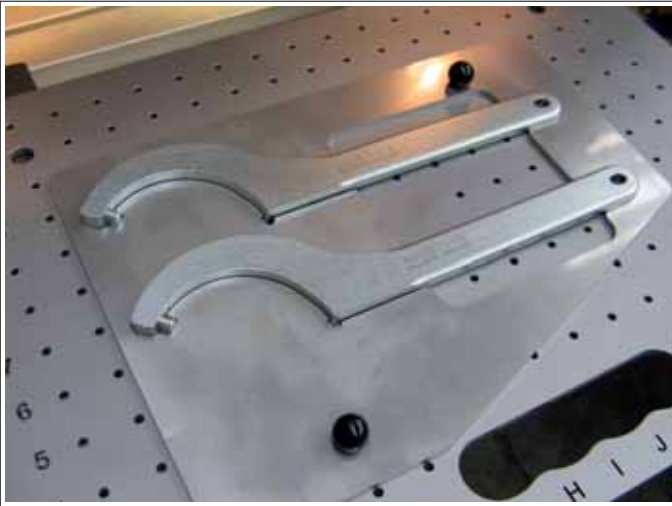


Specifications subject to change.

## Contour templates

The contour templates are used for positioning of workpieces whose external geometric shapes are too complicated for the workpieces to be positioned using stop angles or stop frames. The contour templates are fastened to the positioning system by means of positioning pins (order no.: 305615). The material used is stainless steel plate.

Send us your CAD data (2D or 3D data) with information about your marking position and the written field size, and we will manufacture the contour templates to your specifications.



AMF DIN1810BD hook wrenches can be inscribed easily in volume production using contour templates.

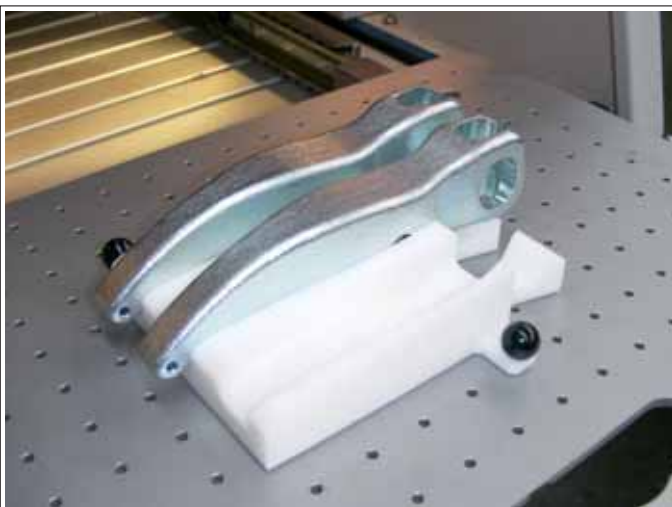


Precise marking of special wrenches is ensured by positioning with contour templates.

## Shaped supports

The shaped supports are used for positioning of geometrically complex workpieces. They are made of plastic, and are negatives of the shape of your workpiece. This enables precise positioning of all shapes on the laser marking machine. The templates are fastened to the positioning system by means of positioning pins (order no.: 305615).

Send us your CAD data (preferably 3D data) with information about your marking position and the written field size, and we will manufacture the shaped supports to your specifications. If you do not have any 3D data available, we can digitize your workpieces or products and produce the shaped support precisely.



Using precision contour templates, the clamping arm of the AMF power clamp can be laser-marked easily.



Ballpoint pens or other promotional gifts with complicated external shapes can be positioned precisely using contour templates.



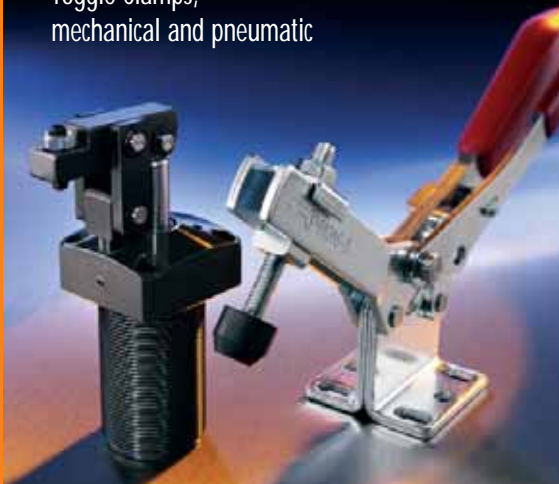
CLAMPING. SCREWING. LOCKING.  
Plus Service Guarantee

Certified according  
to ISO 9001

### Zero-Point-Systems



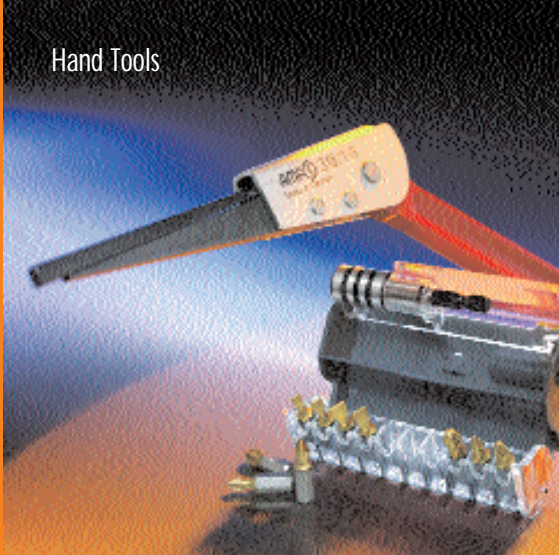
### Toggle Clamps, mechanical and pneumatic



### Standard Clamping Elements



### Hand Tools



Leaflet order no. 443994 - 6 2,00

All sales are subject to our sales, delivery and payment conditions.  
All rights for design, photographs and texts reserved by the publisher, AMF.  
No photomechanical reproduction without our express permission.

SN -/0.5/-/4./02/2006 Printed in Germany