

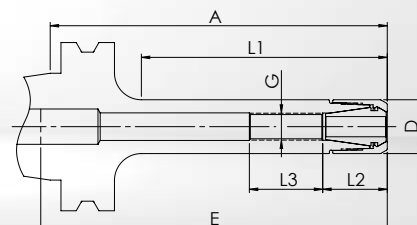
SK30 MPC

MPC MINI PRECISION CHUCKS

DIN 69871-1 (DIN ISO 7388-1)

FORM AD - CENTRAL COOLANT SUPPLY

Very slim precision chuck with optimum interference contour, ideal for HSC machining
Cylindrical design for tight spaces



- **Chuck body and clamping nut separately balanced**
G_{2,5} at 25.000 1/min or U ≤ 1 gmm
- **Standard:** MPC high accuracy clamping nut **without** collet collapse. Concentricity of ≤ 3 μm with GERC-HP collets.

Description + A	Order-No. incl. MPC clamping nut	D = Wrench Ø	max. 1/min	E	L1	L2	L3	G
Clamping range Ø 1-7 mm - Collets GERC11								
MPC11-AD30-A=50	60121340505	16	25.000	60	23	19	17	M8x1
MPC11-AD30-A=100	60121341005	16	25.000	100	73	19	22	M8x1

Suitable Accessories

Collets



Page 135ff

Clamping Nuts



Page 162

Wrenches



Page 160

Mounting Devices



Page 161

Adjustable
Stop Screws



Page 165

Pull Studs



Page 166ff

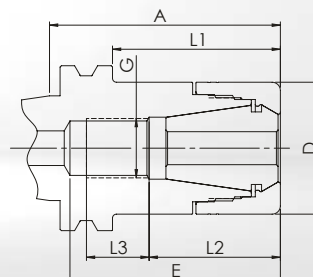
DPC DYNAMIC PERFORMANCE CHUCKS

DIN 69871-1 (DIN ISO 7388-1)

FORM AD - CENTRAL COOLANT SUPPLY

SK30 DPC

Multifunctional precision chuck, especially for finishing and HDC milling
Cylindrical design for less interference contours



- **Chuck body and clamping nut separately balanced**
G_{2,5} at 25.000 1/min or U ≤ 1 gmm
- **Standard:** DPC high accuracy clamping nut **without** collet collapse. Concentricity of ≤ 3 µm with GERC-HP collets.
- **Alternative:** HSS clamping nut **with** 0,4 mm collet collapse. Concentricity of ≤ 10 µm with GERC-B collets. Not suitable for sealed collets.

Description + A	Order-No. incl. DPC clamping nut	Order-No. incl. HSS clamping nut	D = Wrench Ø	E	L1	L2	L3	G
Clamping range Ø 1-10 mm - Collets GERC16								
DPC16-AD30-A=50	62123300505	62123300506	30	65	29	32	25	M11x1
DPC16-AD30-A=100	62123301005	62123301006	30	100	78	32	25	M11x1
Clamping range Ø 1-16 mm - Collets GERC25								
DPC25-AD30-A=70	62125300705	62125300706	40	64	50,5	40	19	M18x1,5
Clamping range Ø 2-20 mm - Collets GERC32								
DPC32-AD30-A=70	62126300705	62126300706	50	76	51	45	23	M22x1,5

Suitable Accessories

Collets



Page 138ff

Clamping Nuts



Page 162ff

Wrenches



Page 160

Mounting Devices



Page 161

Adjustable
Stop Screws



Page 165

Pull Studs



Page 166ff

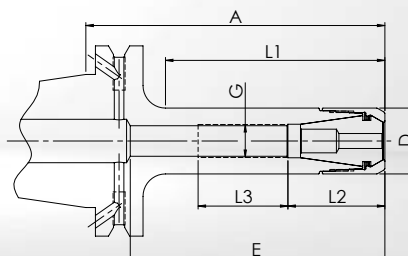
SK40 MPC

MPC MINI PRECISION CHUCKS

DIN 69871-1 (DIN ISO 7388-1)

FORM AD/B - COOLANT SUPPLY CENTRAL / VIA THE COLLAR (= B)

Very slim precision chuck with optimum interference contour, ideal for HSC machining
Cylindrical design for tight spaces



• **Chuck body and clamping nut separately balanced**
G_{2,5} at 25.000 1/min or U ≤ 1 gmm

• **Standard:** MPC high accuracy clamping nut **without** collet collapse. Concentricity of ≤ 3 μm with GERC-HP collets.

• **Alternative:** HSS clamping nut **with** 0,4 mm collet collapse. Concentricity of ≤ 10 μm with GERC-B collets. Not suitable for sealed collets.

Description + A	Order-No. incl. MPC clamping nut	Order-No. incl. HSS clamping nut	D = Wrench Ø	max. 1/min	E	L1	L2	L3	G
Clamping range Ø 1-7 mm - Collets GERC11									
MPC11-B40-A=70	60241340705	---	16	25.000	60	41	19	20	M8x1
MPC11-B40-A=100	60241341005	---	16	25.000	80	71	19	20	M8x1
MPC11-B40-A=130	60241341305	---	16	25.000	110	101	19	25	M8x1
MPC11-B40-A=160	60241341605	---	16	25.000	140	131	19	30	M8x1
Clamping range Ø 1-10 mm - Collets GERC16									
MPC16-B40-A=70	60243340705	60243340706	22	25.000	100	45	32	20	M11x1
MPC16-B40-A=100	60243341005	60243341006	22	25.000	100	73	32	30	M11x1
MPC16-B40-A=130	60243341305	60243341306	22	25.000	130	100	32	25	M11x1
MPC16-B40-A=160	60243341605	60243341606	22	25.000	140	130	32	30	M11x1

Suitable Accessories

Collets



Page 135ff

Clamping Nuts



Page 162ff

Wrenches



Page 160

Mounting Devices



Page 161

Adjustable Stop Screws



Page 165

Pull Studs



Page 166ff

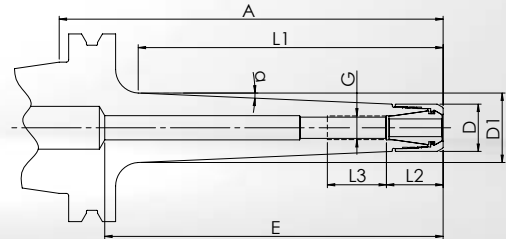
MPC MINI PRECISION CHUCKS

DIN 69871-1 (DIN ISO 7388-1)

FORM AD - CENTRAL COOLANT SUPPLY

SK40
MPC

Slim precision chuck for difficult machining tasks and HSC machining
Tapered design for more stability



- **Chuck body and clamping nut separately balanced**
G_{2,5} at 25.000 1/min or U ≤ 1 gmm
- **Standard:** MPC high accuracy clamping nut **without** collet collapse. Concentricity of ≤ 3 μm with GERC-HP collets.
- **Alternative:** HSS clamping nut **with** 0,4 mm collet collapse. Concentricity of ≤ 10 μm with GERC-B collets. Not suitable for sealed collets.

Description + A	Order-No. incl. MPC clamping nut	Order-No. incl. HSS clamping nut	D = Wrench Ø	max. 1/min	E	D1	α	L1	L2	L3	G
Clamping range Ø 1-7 mm - Collets GERC11											
MPC11C-AD40-A=100	60141331005	---	16	25.000	100	21	2,5°	73	19	35	M8x1
MPC11C-AD40-A=130	60141331305	---	16	25.000	100	23,5	2,5°	103	19	35	M8x1
MPC11C-AD40-A=160	60141331605	---	16	25.000	130	26	2,5°	133	19	35	M8x1
Clamping range Ø 1-10 mm - Collets GERC16											
MPC16C-AD40-A=100	60143331005	60143331006	22	25.000	80	27	2,5°	76	32	35	M11x1
MPC16C-AD40-A=130	60143331305	60143331306	22	25.000	110	29	2,5°	106	32	35	M11x1
MPC16C-AD40-A=160	60143331605	60143331606	22	25.000	130	32	2,5°	136	32	35	M11x1

Suitable Accessories

Collets



Page 135ff

Clamping Nuts



Page 162ff

Wrenches



Page 160

Mounting Devices



Page 161

Adjustable Stop Screws



Page 165

Pull Studs



Page 166ff

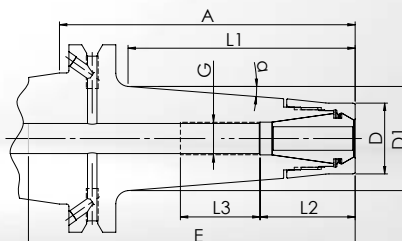
SK40 MPC

MPC MINI PRECISION CHUCKS

DIN 69871-1 (DIN ISO 7388-1)

FORM AD/B - COOLANT SUPPLY CENTRAL / VIA THE COLLAR (= B)

Slim precision chuck for difficult cutting tasks and milling operations
Tapered design with tapered clamping nut for more stability and clamping force



- **Chuck body and clamping nut separately balanced**
G_{2,5} at 25.000 1/min or U ≤ 1 gmm

- **Standard:** MPC high accuracy clamping nut **without** collet collapse. Concentricity of ≤ 3 μm with GERC-HP collets.

- **Alternative:** HSS clamping nut **with** 0,4 mm collet collapse. Concentricity of ≤ 10 μm with GERC-B collets. Not suitable for sealed collets.

Description + A	Order-No. incl. MPC clamping nut	Order-No. incl. HSS clamping nut	D = Wrench Ø	max. 1/min	E	D1	α	L1	L2	L3	G
Clamping range Ø 1-10 mm - Collets GERC16											
MPC16T-B40-A=100	60243321005	60243321006	24	25.000	100	35	4,5°	77	32	25	M11x1
MPC16T-B40-A=130	60243321305	60243321306	24	25.000	130	40	4,5°	106	32	25	M11x1
MPC16T-B40-A=160	60243321605	60243321606	24	25.000	140	37	2,5°	137	32	25	M11x1

Suitable Accessories

Collets



Page 138ff

Clamping Nuts



Page 162ff

Wrenches



Page 160

Mounting Devices



Page 161

Adjustable
Stop Screws



Page 165

Pull Studs



Page 166ff

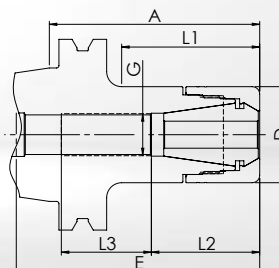
DPC DYNAMIC PERFORMANCE CHUCKS

DIN 69871-1 (DIN ISO 7388-1)

FORM AD - CENTRAL COOLANT SUPPLY

SK40
DPC

Multifunctional precision chuck, especially for finishing and HDC milling
Cylindrical design for less interference contours



- **Chuck body and clamping nut separately balanced**
G_{2,5} at 25.000 1/min or U ≤ 1 gmm
- **Standard:** DPC high accuracy clamping nut **without** collet collapse. Concentricity of ≤ 3 μm with GERC-HP collets.
- **Alternative:** HSS clamping nut **with** 0,4 mm collet collapse. Concentricity of ≤ 10 μm with GERC-B collets. Not suitable for sealed collets.

Description + A	Order-No. incl. DPC clamping nut	Order-No. incl. HSS clamping nut	D = Wrench Ø	E	L1	L2	L3	G
Clamping range Ø 1-10 mm - Collets GERC16								
DPC16-AD40-A=70	62143300705	62143300706	30	100	43,5	32	25	M11x1
DPC16-AD40-A=100	62143301005	62143301006	30	130	73,5	32	25	M11x1
Clamping range Ø 1-13 mm - Collets GERC20								
DPC20-AD40-A=70	62144300705	62144300706	32	85	46	36	46	M14x1
DPC20-AD40-A=100	62144301005	62144301006	32	85	75	36	46	M14x1
DPC20-AD40-A=130	62144301305	62144301306	32	150	105	36	25	M14x1
Clamping range Ø 1-16 mm - Collets GERC25								
DPC25-AD40-A=70	62145300705	62145300706	40	110	48,5	45	30	M18x1,5
DPC25-AD40-A=100	62145301005	62145301006	40	130	79	45	35	M18x1,5
Clamping range Ø 2-20 mm - Collets GERC32								
DPC32-AD40-A=50	62146300505	62146300506	50	84	31	48	29	M22x1,5
DPC32-AD40-A=70	62146300705	62146300706	50	99	51	48	40	M22x1,5
DPC32-AD40-A=100	62146301005	62146301006	50	114	81	45	50	M22x1,5
Clamping range Ø 3-26 mm - Collets GERC40								
DPC40-AD40-A=70*	62147300705	---	63	83	50	56	22	M28x1,5
DPC40-AD40-A=100*	62147301005	---	63	83	81	56	20	M28x1,5

* Without clearance to DIN 69871 in front of the tool change flange.
For other DPC chucks with SK40 in AD/B, see following page.

Suitable Accessories

Collets



Page 138ff

Clamping Nuts



Page 162ff

Wrenches



Page 160

Mounting Devices



Page 161

Adjustable
Stop Screws



Page 165

Pull Studs



Page 166ff

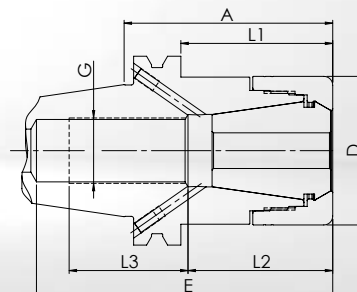
SK40 DPC

DPC DYNAMIC PERFORMANCE CHUCKS

DIN 69871-1 (DIN ISO 7388-1)

FORM AD/B - COOLANT SUPPLY CENTRAL / VIA THE COLLAR (= B)

Multifunctional precision chuck, especially for finishing and HDC milling
Cylindrical design for less interference contours



- **Chuck body and clamping nut separately balanced**
G_{2,5} at 25.000 1/min or U ≤ 1 gmm
- **Standard:** DPC high accuracy clamping nut **without** collet collapse. Concentricity of ≤ 3 μm with GERC-HP collets.
- **Alternative:** HSS clamping nut **with** 0,4 mm collet collapse. Concentricity of ≤ 10 μm with GERC-B collets. Not suitable for sealed collets.

Description + A	Order-No. incl. DPC clamping nut	Order-No. incl. HSS clamping nut	D = Wrench Ø	E	L1	L2	L3	G
Clamping range Ø 1-10 mm - Collets GERC16								
DPC16-B40-A=70	62243300705	62243300706	30	100	43,5	32	25	M11x1
DPC16-B40-A=100	62243301005	62243301006	30	130	73,5	32	25	M11x1
DPC16-B40-A=130	62243301305	62243301306	30	160	103,5	32	25	M11x1
DPC16-B40-A=160	62243301605	62243301606	30	180	133,5	32	25	M11x1
DPC16-B40-A=200	62243302005	62243302006	30	220	173	32	25	M11x1
Clamping range Ø 1-16 mm - Collets GERC25								
DPC25-B40-A=45	62245300455	62245300456	40	80	26	43	25	M18x1,5
DPC25-B40-A=70	62245300705	62245300706	40	110	48,5	45	30	M18x1,5
DPC25-B40-A=100	62245301005	62245301006	40	130	79	45	35	M18x1,5
DPC25-B40-A=130	62245301305	62245301306	40	135	109	43	35	M18x1,5
DPC25-B40-A=160	62245301605	62245301606	40	118	139	43	35	M18x1,5
DPC25-B40-A=200	62245302005	62245302006	40	164	178	43	35	M18x1,5
Clamping range Ø 2-20 mm - Collets GERC32								
DPC32-B40-A=50	62246300505	62246300506	50	84	31	48	29	M22x1,5
DPC32-B40-A=70	62246300705	62246300706	50	99	51	48	40	M22x1,5
DPC32-B40-A=100	62246301005	62246301006	50	114	81	45	50	M22x1,5
DPC32-B40-A=130	62246301305	62246301306	50	114	111	45	39	M22x1,5
DPC32-B40-A=160	62246301605	62246301606	50	149	141	45	47	M22x1,5

Suitable Accessories

Collets



Page 138ff

Clamping Nuts



Page 162ff

Wrenches



Page 160

Mounting Devices



Page 161

Adjustable Stop Screws



Page 165

Pull Studs



Page 166ff

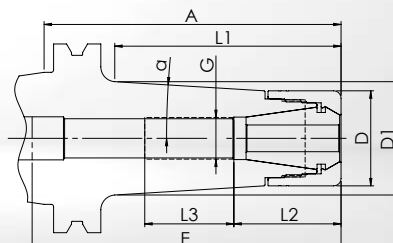
DPC DYNAMIC PERFORMANCE CHUCKS

DIN 69871-1 (DIN ISO 7388-1)

FORM AD - CENTRAL COOLANT SUPPLY

SK40
DPC

Stable precision chuck for demanding tasks, especially in HDC milling
Tapered design for better damping and higher stability



- **Chuck body and clamping nut separately balanced**
G_{2,5} at 25.000 1/min or U ≤ 1 gmm
- **Standard:** DPC high accuracy clamping nut **without** collet collapse. Concentricity of ≤ 3 μm with GERC-HP collets.
- **Alternative:** HSS clamping nut **with** 0,4 mm collet collapse. Concentricity of ≤ 10 μm with GERC-B collets. Not suitable for sealed collets.

Description + A	Order-No. incl. DPC clamping nut	Order-No. incl. HSS clamping nut	D = Wrench Ø	E	D1	α	L1	L2	L3	G
Clamping range Ø 1-10 mm - Collets GERC16										
DPC16C-AD40-A=70	62143310705	62143310706	30	80	34	4,5°	48	32	25	M11x1
DPC16C-AD40-A=100	62143311005	62143311006	30	110	37	3,5°	78	32	25	M11x1
DPC16C-AD40-A=130	62143311305	62143311306	30	130	37	2,5°	108	32	25	M11x1
Clamping range Ø 1-13 mm - Collets GERC20										
DPC20C-AD40-A=70	62144310705	62144310706	32	100	35,5	4,5°	46	32	25	M14x1
DPC20C-AD40-A=100	62144311005	62144311006	32	120	38	3,5°	76	32	25	M14x1
DPC20C-AD40-A=130	62144311305	62144311306	32	140	39	2,5°	106	32	25	M14x1
Clamping range Ø 1-16 mm - Collets GERC25										
DPC25C-AD40-A=70	62145310705	62145310706	40	103	43	4,5°	48	44	30	M18x1,5
DPC25C-AD40-A=100	62145311005	62145311006	40	109	46	3,5°	80	43	35	M18x1,5
DPC25C-AD40-A=130	62145311305	62145311306	40	128	47	2,5°	109	43	35	M18x1,5

Suitable Accessories

Collets



Page 138ff

Clamping Nuts



Page 162ff

Wrenches



Page 160

Mounting Devices



Page 161

Adjustable Stop Screws



Page 165

Pull Studs



Page 166ff

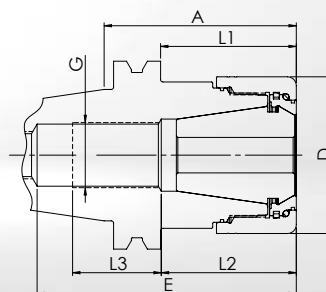
SK40 UPC

UPC ULTRA POWER CHUCKS

DIN 69871-1 (DIN ISO 7388-1)

FORM AD - CENTRAL COOLANT SUPPLY

Extremely stiff precision chuck for the most demanding tasks with predominantly radial load
Cylindrical design with a multi-part clamping nut for optimised damping and maximum stability



- **Chuck body and clamping nut separately balanced**
G6,3 at 18.000 1/min
- **Standard:** UPC high accuracy clamping nut **without** collet collapse. Concentricity of $\leq 3 \mu\text{m}$ with GERC-HP collets.

Description + A	Order-No. incl. UPC clamping nut	D = Wrench Ø	E	L1	L2	L3	G
Clamping range Ø 2-20 mm - Collets GERC32							
UPC32-AD40-A=65	66146300655	53	87	45	45	30	M22x1,5
Clamping range Ø 3-26 mm - Collets GERC40							
UPC40-AD40-A=70	66147300705	63	83	50	56	27	M28x1,5

Note about UPC40: For longer A dimensions A=100, see FPC page 77.

Suitable Accessories

Collets



Page 150ff

Clamping Nuts



Page 164

Wrenches



Page 160

Mounting Devices



Page 161

Adjustable
Stop Screws



Page 165

Pull Studs



Page 166ff

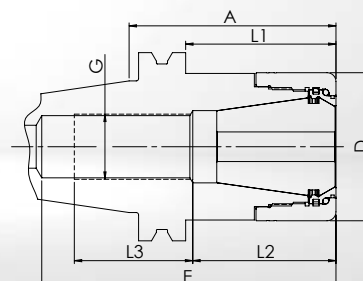
FPC FULL PERFORMANCE CHUCKS

DIN 69871-1 (DIN ISO 7388-1)

FORM AD - CENTRAL COOLANT SUPPLY

SK40
FPC

Stable precision chuck, especially for trochoidal milling and other HPC milling strategies
Version with a multi-part clamping nut for optimised damping, especially for axial load



- **Chuck body and clamping nut separately balanced**
G6,3 at 18.000 1/min
- **Standard:** FPC high accuracy clamping nut **without** collet collapse. Concentricity of $\leq 3 \mu\text{m}$ with GERC-HP collets.

Description + A	Order-No. incl. FPC clamping nut	D = Wrench \varnothing	E	L1	L2	L3	G
Clamping range \varnothing 2-20 mm - Collets GERC32							
FPC32-AD40-A=50	62146300509	50	84	31	48	29	M22x1,5
FPC32-AD40-A=70	62146300709	50	99	51	48	40	M22x1,5
FPC32-AD40-A=100	62146301009	50	114	81	45	50	M22x1,5
Clamping range \varnothing 3-26 mm - Collets GERC40							
FPC40-AD40-A=100*	62147301009	63	83	81	56	20	M28x1,5

* Without clearance to DIN 69871 in front of the tool change flange.
For other FPC chucks with SK40 in AD/B, see following page.

Suitable Accessories

Collets



Page 150ff

Clamping Nuts



Page 164

Wrenches



Page 160

Mounting Devices



Page 161

Adjustable Stop Screws



Page 165

Pull Studs



Page 166ff

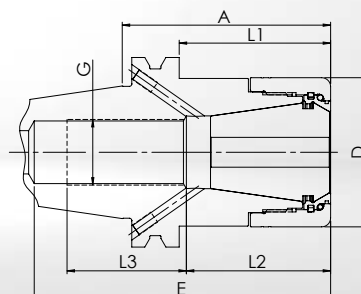
SK40 FPC

FPC FULL PERFORMANCE CHUCKS

DIN 69871-1 (DIN ISO 7388-1)

FORM AD/B - COOLANT SUPPLY CENTRAL / VIA THE COLLAR (= B)

Stable precision chuck, especially for trochoidal milling and other HPC milling strategies
Version with a multi-part clamping nut for optimised damping, especially for axial load



- **Chuck body and clamping nut separately balanced**
G6,3 at 18.000 1/min
- **Standard:** FPC high accuracy clamping nut **without** collet collapse. Concentricity of $\leq 3 \mu\text{m}$ with GERC-HP collets.

Description + A	Order-No. incl. FPC clamping nut	D = Wrench Ø	E	L1	L2	L3	G
Clamping range Ø 2-20 mm - Collets GERC32							
FPC32-B40-A=50	62246300509	50	84	31	48	29	M22x1,5
FPC32-B40-A=70	62246300709	50	99	51	48	40	M22x1,5
FPC32-B40-A=100	62246301009	50	114	81	45	50	M22x1,5
FPC32-B40-A=130	62246301309	50	114	111	45	39	M22x1,5
FPC32-B40-A=160	62246301609	50	149	141	45	47	M22x1,5

Suitable Accessories

Collets



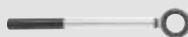
Page 150ff

Clamping Nuts



Page 164

Wrenches



Page 160

Mounting Devices



Page 161

Adjustable
Stop Screws



Page 165

Pull Studs



Page 166ff

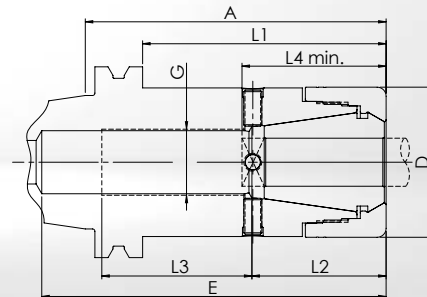
AFC ADJUSTABLE FINISHING CHUCKS

DIN 69871-1 (DIN ISO 7388-1)

FORM AD - CENTRAL COOLANT SUPPLY

SK40
AFC

Adjustable precision chuck for reaming and other tasks with maximum concentricity
Design for adjustable concentricity with 4 screws on the circumference



- **Chuck body and clamping nut separately balanced**
G6,3 at 18.000 1/min
- **Standard:** DPC high accuracy clamping nut **without** collet collapse, for collets GERC-HP, adjustable runout, especially for long overhang and reamers.

Clamping diameter	Possible range	L4 min.	Description + A	Order-No. incl. DPC clamping nut	D = Wrench \emptyset	E	L1	L2	L3	G
Collets GERC25										
7-10	7-10	43	AFC25-AD40-A=100	62145305235	40	130	79	45	35	M18x1,5
11-13	10,1-13,5	43	AFC25-AD40-A=100	62145305245	40	130	79	45	35	M18x1,5
14-16	13,51-16	43	AFC25-AD40-A=100	62145305265	40	130	79	45	35	M18x1,5
Collets GERC32										
7-13	7-13,5	47	AFC32-AD40-A=100	62146305245	50	114	81	45	50	M22x1,5
14-20	13,51-20	47	AFC32-AD40-A=100	62146305265	50	114	81	45	50	M22x1,5
Collets GERC40										
7-15	7-15,5	55	AFC40-AD40-A=100*	62147305245	63	83	81	56	20	M28x1,5
16-26	15,51-26	55	AFC40-AD40-A=100*	62147305265	63	83	81	56	20	M28x1,5

* Without clearance to DIN 69871 in front of the tool change flange.
Please note the minimum clamping length L4 required for the function and that the chuck is only approved for the respective clamping \emptyset .
Other versions and clamping \emptyset can be offered after technical examination.

Suitable Accessories

Collets



Page 146ff

Clamping Nuts



Page 162

Wrenches



Page 160

Mounting Devices



Page 161

Adjustable Stop Screws



Page 165

Pull Studs



Page 166ff

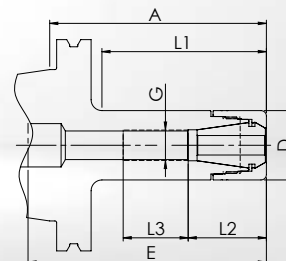
SK50 DPC

DPC DYNAMIC PERFORMANCE CHUCKS

DIN 69871-1 (DIN ISO 7388-1)

FORM AD - CENTRAL COOLANT SUPPLY

Multifunctional precision chuck, especially for finishing and HDC milling
Cylindrical design for less interference contours



- **Chuck body and clamping nut separately balanced**
G_{2,5} at 25.000 1/min or U ≤ 1 gmm
- **Standard:** DPC high accuracy clamping nut **without** collet collapse. Concentricity of ≤ 3 μm with GERC-HP collets.
- **Alternative:** HSS clamping nut **with** 0,4 mm collet collapse. Concentricity of ≤ 10 μm with GERC-B collets. Not suitable for sealed collets.

Description + A	Order-No. incl. DPC clamping nut	Order-No. incl. HSS clamping nut	D = Wrench Ø	E	L1	L2	L3	G
Clamping range Ø 1-10 mm - Collets GERC16								
DPC16-AD50-A=70	62163300705	62163300706	30	110	39	32	23	M11x1
DPC16-AD50-A=100	62163301005	62163301006	30	140	69	32	30	M11x1
DPC16-AD50-A=160	62163301605	62163301606	30	200	129	32	30	M11x1
Clamping range Ø 1-13 mm - Collets GERC20								
DPC20-AD50-A=100	62164301005	62164301006	32	130	76	36	46	M14x1
DPC20-AD50-A=160	62164301605	62164301606	32	160	106	36	46	M14x1
Clamping range Ø 1-16 mm - Collets GERC25								
DPC25-AD50-A=70	62165300705	62165300706	40	120	38	40	50	M18x1,5
DPC25-AD50-A=100	62165301005	62165301006	40	140	68	43	40	M18x1,5
DPC25-AD50-A=160	62165301605	62165301606	40	200	128	40	40	M18x1,5

For other DPC chucks with SK50 in AD/B, see following page.

Suitable Accessories

Collets



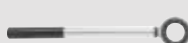
Page 138ff

Clamping Nuts



Page 162ff

Wrenches



Page 160

Mounting Devices



Page 161

Adjustable
Stop Screws



Page 165

Pull Studs



Page 166ff

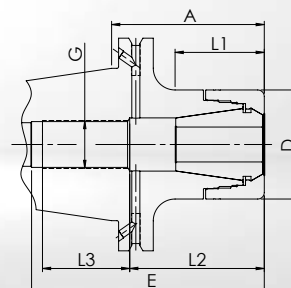
DPC DYNAMIC PERFORMANCE CHUCKS

DIN 69871-1 (DIN ISO 7388-1)

FORM AD/B - COOLANT SUPPLY CENTRAL / VIA THE COLLAR (= B)

SK50 DPC

Multifunctional precision chuck, especially for finishing and HDC milling
Cylindrical design for less interference contours



- **Chuck body and clamping nut separately balanced**
G_{2,5} at 25.000 1/min or U ≤ 1 gmm
- **Standard:** DPC high accuracy clamping nut **without** collet collapse. Concentricity of ≤ 3 μm with GERC-HP collets.
- **Alternative:** HSS clamping nut **with** 0,4 mm collet collapse. Concentricity of ≤ 10 μm with GERC-B collets. Not suitable for sealed collets.

Description + A	Order-No. incl. DPC clamping nut	Order-No. incl. HSS clamping nut	D = Wrench Ø	E	L1	L2	L3	G
Clamping range Ø 2-20 mm - Collets GERC32								
DPC32-B50-A=70	62266300705	62266300706	50	108	40	62	34	M22x1,5
DPC32-B50-A=100	62266301005	62266301006	50	120	70	45	40	M22x1,5
DPC32-B50-A=130	62266301305	62266301306	50	150	101	45	40	M22x1,5
DPC32-B50-A=160	62266301605	62266301606	50	150	130	47	40	M22x1,5
Clamping range Ø 3-26 mm - Collets GERC40								
DPC40-B50-A=70	62267300705	---	63	90	46	56	30	M28x1,5
DPC40-B50-A=100	62267301005	---	63	90	76	56	30	M28x1,5
DPC40-B50-A=130	62267301305	---	63	90	106	56	30	M28x1,5
DPC40-B50-A=160	62267301605	---	63	90	136	56	40	M28x1,5

Suitable Accessories

Collets



Page 150ff

Clamping Nuts



Page 162ff

Wrenches



Page 160

Mounting Devices



Page 161

Adjustable
Stop Screws



Page 165

Pull Studs



Page 166ff

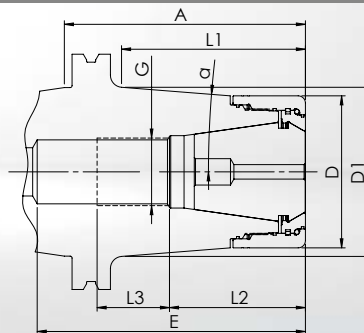
SK50 UPC

UPC ULTRA POWER CHUCKS

DIN 69871-1 (DIN ISO 7388-1)

FORM AD - CENTRAL COOLANT SUPPLY

Extremely stiff precision chuck for the most demanding tasks with predominantly radial load
Tapered design with a multi-part clamping nut for optimised damping and maximum stability



- **Chuck body and clamping nut separately balanced**
G6,3 at 18.000 1/min
- **Standard:** UPC high accuracy clamping nut **without** collet collapse. Concentricity of $\leq 3 \mu\text{m}$ with GERC-HP collets.

Description + A	Order-No. incl. UPC clamping nut	D = Wrench Ø	E	D1	α	L1	L2	L3	G
Clamping range Ø 2-20 mm - Collets GERC32									
UPC32C-AD50-A=70	66166310705	53	91	59,5	10°	46,5	45,5	35	M22x1,5
UPC32C-AD50-A=100	66166311005	53	121	70,5	10°	77	45,5	38	M22x1,5
Clamping range Ø 3-26 mm - Collets GERC40									
UPC40C-AD50-A=70	66167310705	63	93	68	10°	46,5	56	30	M28x1,5
UPC40C-AD50-A=100	66167311005	63	140	70	4,5°	76,5	56	30	M28x1,5

Note about UPC40: For longer A dimensions in cylindrical form A=130 and A=160, see FPC page 83.

Suitable Accessories

Collets



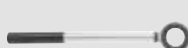
Page 150ff

Clamping Nuts



Page 164

Wrenches



Page 160

Mounting Devices



Page 161

Adjustable
Stop Screws



Page 165

Pull Studs



Page 166ff

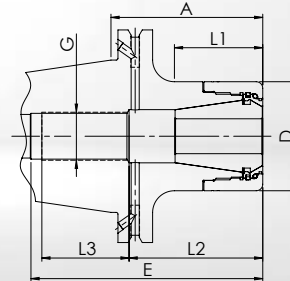
FPC FULL PERFORMANCE CHUCKS

DIN 69871-1 (DIN ISO 7388-1)

FORM AD/B - COOLANT SUPPLY CENTRAL / VIA THE COLLAR (= B)

SK50 FPC

Stable precision chuck, especially for trochoidal milling and other HPC milling strategies
Version with a multi-part clamping nut for optimised damping, especially for axial load



- **Chuck body and clamping nut separately balanced**
G6,3 at 18.000 1/min
- **Standard:** FPC high accuracy clamping nut **without** collet collapse. Concentricity of $\leq 3 \mu\text{m}$ with GERC-HP collets.

Description + A	Order-No. incl. FPC clamping nut	D = Wrench Ø	E	L1	L2	L3	G
Clamping range Ø 2-20 mm - Collets GERC32							
FPC32-B50-A=70	62266300709	50	108	40	62	34	M22x1,5
FPC32-B50-A=100	62266301009	50	120	70	45	40	M22x1,5
FPC32-B50-A=130	62266301309	50	150	101	45	40	M22x1,5
FPC32-B50-A=160	62266301609	50	150	130	47	40	M22x1,5
Clamping range Ø 3-26 mm - Collets GERC40							
FPC40-B50-A=70	62267300709	63	90	46	56	30	M28x1,5
FPC40-B50-A=100	62267301009	63	90	76	56	30	M28x1,5
FPC40-B50-A=130	62267301309	63	90	106	56	30	M28x1,5
FPC40-B50-A=160	62267301609	63	90	136	56	40	M28x1,5

Suitable Accessories

Collets



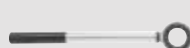
Page 150ff

Clamping Nuts



Page 164

Wrenches



Page 160

Mounting Devices



Page 161

Adjustable
Stop Screws



Page 165

Pull Studs



Page 166ff

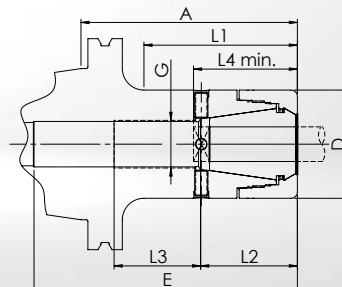
SK50 AFC

AFC ADJUSTABLE FINISHING CHUCKS

DIN 69871-1 (DIN ISO 7388-1)

FORM AD - CENTRAL COOLANT SUPPLY

Adjustable precision chuck for reaming and other tasks with maximum concentricity
Design for adjustable concentricity with 4 screws on the circumference



- **Chuck body and clamping nut separately balanced**
G6,3 at 18.000 1/min
- **Standard:** DPC high accuracy clamping nut **without** collet collapse, for collets GERC-HP, adjustable runout, especially for long overhang and reamers.

Clamping diameter	Possible range	L4 min.	Description + A	Order-No. incl. DPC clamping nut	D = Wrench Ø	E	L1	L2	L3	G
Collets GERC25										
7-10	7-10	43	AFC25-AD50-A=100	62165305235	40	130	68	43	40	M18x1,5
11-13	10,1-13,5	43	AFC25-AD50-A=100	62165305245	40	130	68	43	40	M18x1,5
14-16	13,51-16	43	AFC25-AD50-A=100	62165305265	40	130	68	43	40	M18x1,5
Collets GERC32										
7-13	7-13,5	47	AFC32-AD50-A=100	62166305245	50	114	70	45	40	M22x1,5
14-20	13,51-20	47	AFC32-AD50-A=100	62166305265	50	114	70	45	40	M22x1,5
Collets GERC40										
7-15	7-15,5	55	AFC40-AD50-A=100	62167305245	63	90	76	56	30	M28x1,5
16-26	15,51-26	55	AFC40-AD50-A=100	62167305265	63	90	76	56	30	M28x1,5

Please note the minimum clamping length L4 required for the function and that the chuck is only approved for the respective clamping Ø. Other versions and clamping Ø can be offered after technical examination.

Suitable Accessories

Collets



Page 146ff

Clamping Nuts



Page 162

Wrenches



Page 160

Mounting Devices



Page 161

Adjustable Stop Screws



Page 165

Pull Studs



Page 166ff