

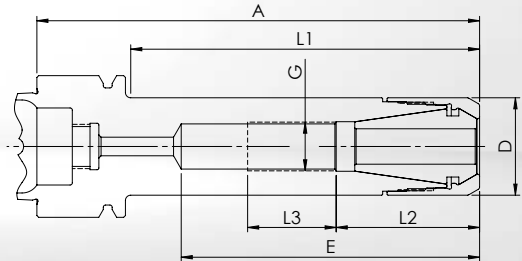
# HSK-A32 MPC

## MPC MINI PRECISION CHUCKS

DIN 69893-1/ISO 12164-1

FORM AD - CENTRAL COOLANT SUPPLY

Very slim precision chuck with optimum interference contour, ideal for HSC machining  
Cylindrical design for tight spaces



• **Chuck body and clamping nut separately balanced**  
G<sub>2,5</sub> at 25.000 1/min or U ≤ 1 gmm

• **Standard:** MPC high accuracy clamping nut **without** collet collapse. Concentricity of ≤ 3 μm with GERC-HP collets.

• **Alternative:** HSS clamping nut **with** 0,4 mm collet collapse. Concentricity of ≤ 10 μm with GERC-B collets. Not suitable for sealed collets.

Description + A	Order-No. incl. MPC clamping nut	Order-No. incl. HSS clamping nut	D = Wrench Ø	max. 1/min	E	L1	L2	L3	G
Clamping range Ø 1-7 mm - Collets GERC11									
MPC11-HSK-A32-A=40	61131340405	---	16	50.000	24	20	---	---	---
Clamping range Ø 1-10 mm - Collets GERC16									
MPC16-HSK-A32-A=50	61133340505	61133340506	22	45.000	32	30	---	---	---
MPC16-HSK-A32-A=100	61133341005	61133341006	22	30.000	67	80	32	20	M11x1

### Suitable Accessories

Collets



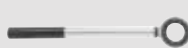
Page 135ff

Clamping Nuts



Page 162ff

Wrenches



Page 160

Mounting Devices



Page 161

Adjustable  
Stop Screws



Page 165

Coolant Supply  
Tubes and Wrenches



Page 165

# DPC DYNAMIC PERFORMANCE CHUCKS

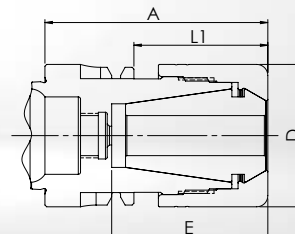
DIN 69893-1/ISO 12164-1

FORM AD - CENTRAL COOLANT SUPPLY

## HSK-A32

## DPC

Multifunctional precision chuck, especially for finishing and HDC milling  
Cylindrical design for less interference contours



- **Chuck body and clamping nut separately balanced**  
G2,5 at 25.000 1/min or U ≤ 1 gmm
- **Standard:** DPC high accuracy clamping nut **without** collet collapse. Concentricity of ≤ 3 µm with GERC-HP collets.
- **Alternative:** HSS clamping nut **with** 0,4 mm collet collapse. Concentricity of ≤ 10 µm with GERC-B collets. Not suitable for sealed collets.

Description + A	Order-No. incl. DPC clamping nut	Order-No. incl. HSS clamping nut	D = Wrench Ø	E	L1	L2	L3	G
Clamping range Ø 1-13 mm - Collets GERC20								
DPC20-HSK-A32-A=50	63134300505	63134300506	32	35	30	---	---	---

### Suitable Accessories

Collets



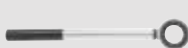
Page 142ff

Clamping Nuts



Page 162ff

Wrenches



Page 160

Mounting Devices



Page 161

Adjustable  
Stop Screws



Page 165

Coolant Supply  
Tubes and Wrenches



Page 165

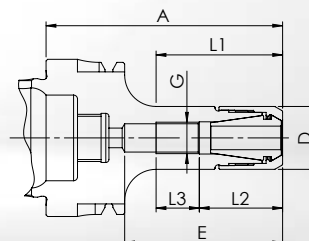
# HSK-A40 MPC

## MPC MINI PRECISION CHUCKS

DIN 69893-1/ISO 12164-1

FORM AD - CENTRAL COOLANT SUPPLY

Very slim precision chuck with optimum interference contour, ideal for HSC machining  
Cylindrical design for tight spaces



- **Chuck body and clamping nut separately balanced**  
G<sub>2,5</sub> at 25.000 1/min or U ≤ 1 gmm
- **Standard:** MPC high accuracy clamping nut **without** collet collapse. Concentricity of ≤ 3 μm with GERC-HP collets.

Description + A	Order-No. incl. MPC clamping nut	D = Wrench Ø	max. 1/min	E	L1	L2	L3	G
Clamping range Ø 1-7 mm - Collets GERC11								
MPC11-HSK-A40-A=60	61141340605	16	42.000	40	40	21	11	M8x1
MPC11-HSK-A40-A=130	61141341305	16	27.000	75	110	19	22	M8x1

### Suitable Accessories

Collets



Page 135ff

Clamping Nuts



Page 162

Wrenches



Page 160

Mounting Devices



Page 161

Adjustable  
Stop Screws



Page 165

Coolant Supply  
Tubes and Wrenches



Page 165

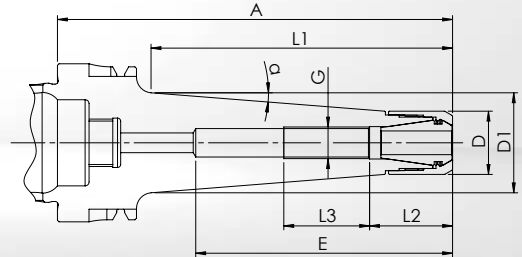
# MPC MINI PRECISION CHUCKS

DIN 69893-1/ISO 12164-1

FORM AD - CENTRAL COOLANT SUPPLY

## HSK-A40 MPC

Slim precision chuck for difficult machining tasks and HSC machining  
Tapered design for more stability



- **Chuck body and clamping nut separately balanced**  
G<sub>2,5</sub> at 25.000 1/min or U ≤ 1 gmm
- **Standard:** MPC high accuracy clamping nut **without** collet collapse. Concentricity of ≤ 3 μm with GERC-HP collets.

Description + A	Order-No. incl. MPC clamping nut	D = Wrench Ø	max. 1/min	E	D1	α	L1	L2	L3	G
Clamping range Ø 1-10 mm - Collets GERC16										
MPC11C-HSK-A40-A=100	61141331005	16	40.000	65	25	4,5°	76	21	21	M8x1

### Suitable Accessories

Collets



Page 135ff

Clamping Nuts



Page 162

Wrenches



Page 160

Mounting Devices



Page 161

Adjustable  
Stop Screws



Page 165

Coolant Supply  
Tubes and Wrenches



Page 165

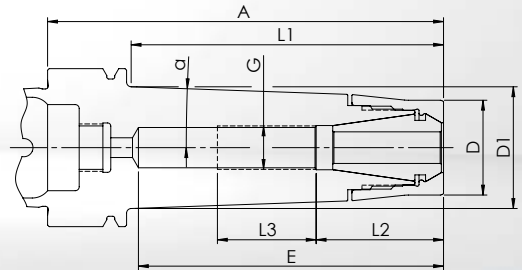
# HSK-A40 MPC

## MPC MINI PRECISION CHUCKS

DIN 69893-1/ISO 12164-1

FORM AD - CENTRAL COOLANT SUPPLY

Slim precision chuck for difficult cutting tasks and milling operations  
Tapered design with tapered clamping nut for more stability and clamping force



• **Chuck body and clamping nut separately balanced**  
G<sub>2,5</sub> at 25.000 1/min or U ≤ 1 gmm

• **Standard:** MPC high accuracy clamping nut **without** collet collapse. Concentricity of ≤ 3 μm with GERC-HP collets.

• **Alternative:** HSS clamping nut **with** 0,4 mm collet collapse. Concentricity of ≤ 10 μm with GERC-B collets. Not suitable for sealed collets.

Description + A	Order-No. incl. MPC clamping nut	Order-No. incl. HSS clamping nut	D = Wrench Ø	max. 1/min	E	D1	α	L1	L2	L3	G
Clamping range Ø 1-10 mm - Collets GERC16											
MPC16T-HSK-A40-A=60	61143320605	61143320606	24	42.000	43	28	2°	40	---	---	---
MPC16T-HSK-A40-A=100	61143321005	61143321006	24	40.000	77	30	2°	80	32	25	M11x1

### Suitable Accessories

Collets



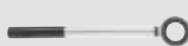
Page 138ff

Clamping Nuts



Page 162ff

Wrenches



Page 160

Mounting Devices



Page 161

Adjustable  
Stop Screws



Page 165

Coolant Supply  
Tubes and Wrenches



Page 165

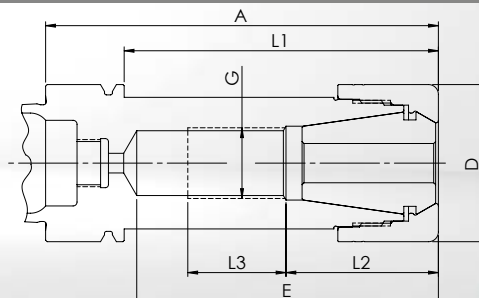
# DPC DYNAMIC PERFORMANCE CHUCKS

DIN 69893-1/ISO 12164-1

FORM AD - CENTRAL COOLANT SUPPLY

## HSK-A40 DPC

Multifunctional precision chuck, especially for finishing and HDC milling  
Cylindrical design for less interference contours



• **Chuck body and clamping nut separately balanced**  
G<sub>2,5</sub> at 25.000 1/min or U ≤ 1 gmm

• **Standard:** DPC high accuracy clamping nut **without** collet collapse. Concentricity of ≤ 3 μm with GERC-HP collets.

• **Alternative:** HSS clamping nut **with** 0,4 mm collet collapse. Concentricity of ≤ 10 μm with GERC-B collets. Not suitable for sealed collets.

Description + A	Order-No. incl. DPC clamping nut	Order-No. incl. HSS clamping nut	D = Wrench Ø	E	L1	L2	L3	G
Clamping range Ø 1-10 mm - Collets GERC16								
DPC16-HSK-A40-A=60	<b>63143300605</b>	<b>63143300606</b>	30	41	40	---	---	---
Clamping range Ø 1-16 mm - Collets GERC25								
DPC25-HSK-A40-A=60	<b>63145300605</b>	<b>63145300606</b>	40	39	40	---	---	---
DPC25-HSK-A40-A=100	63145301005	63145301006	40	77	80	39	25	M18x1,5
Clamping range Ø 2-20 mm - Collets GERC32								
DPC32-HSK-A40-A=61	63146300615	63146300616	50	44,5	41,5	---	---	---

### Suitable Accessories

Collets



Page 138ff

Clamping Nuts



Page 162ff

Wrenches



Page 160

Mounting Devices



Page 161

Adjustable Stop Screws



Page 165

Coolant Supply Tubes and Wrenches



Page 165

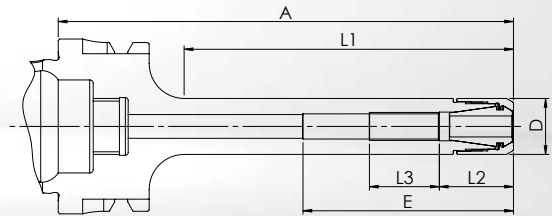
# HSK-A50 MPC

## MPC MINI PRECISION CHUCKS

DIN 69893-1/ISO 12164-1

FORM AD - CENTRAL COOLANT SUPPLY

Very slim precision chuck with optimum interference contour, ideal for HSC machining  
Cylindrical design for tight spaces



- **Chuck body and clamping nut separately balanced**  
G<sub>2,5</sub> at 25.000 1/min or U ≤ 1 gmm
- **Standard:** MPC high accuracy clamping nut **without** collet collapse. Concentricity of ≤ 3 μm with GERC-HP collets.

Description + A	Order-No. incl. MPC clamping nut	D = Wrench Ø	max. 1/min	E	L1	L2	L3	G
Clamping range Ø 1-7 mm - Collets GERC11								
MPC11-HSK-A50-A=130	61151341305	16	27.000	60	104	21	20	M8x1

### Suitable Accessories

Collets



Page 135ff

Clamping Nuts



Page 162

Wrenches



Page 160

Mounting Devices



Page 161

Adjustable  
Stop Screws



Page 165

Coolant Supply  
Tubes and Wrenches



Page 165

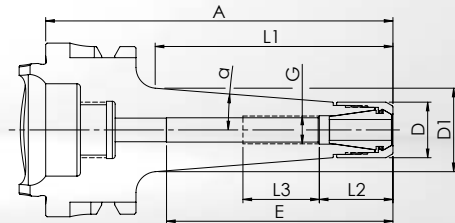
# MPC MINI PRECISION CHUCKS

DIN 69893-1/ISO 12164-1

FORM AD - CENTRAL COOLANT SUPPLY

HSK-A50  
MPC

Slim precision chuck for difficult machining tasks and HSC machining  
Tapered design for more stability



- **Chuck body and clamping nut separately balanced**  
G<sub>2,5</sub> at 25.000 1/min or U ≤ 1 gmm
- **Standard:** MPC high accuracy clamping nut **without** collet collapse. Concentricity of ≤ 3 μm with GERC-HP collets.

Description + A	Order-No. incl. MPC clamping nut	D = Wrench Ø	max. 1/min	E	D1	α	L1	L2	L3	G
Clamping range Ø 1-7 mm - Collets GERC11										
MPC11C-HSK-A50-A=100	61151331005	16	30.000	60	24	4,5°	68	21	20	M8x1

## Suitable Accessories

Collets



Page 135ff

Clamping Nuts



Page 162

Wrenches



Page 160

Mounting Devices



Page 161

Adjustable  
Stop Screws



Page 165

Coolant Supply  
Tubes and Wrenches



Page 165



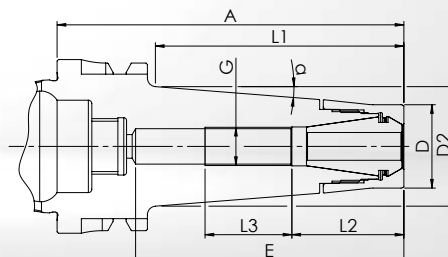
# HSK-A50 MPC

## MPC MINI PRECISION CHUCKS

DIN 69893-1/ISO 12164-1

FORM AD - CENTRAL COOLANT SUPPLY

Slim precision chuck for difficult cutting tasks and milling operations  
Tapered design with tapered clamping nut for more stability and clamping force



- **Chuck body and clamping nut separately balanced**  
G<sub>2,5</sub> at 25.000 1/min or U ≤ 1 gmm

- **Standard:** MPC high accuracy clamping nut **without** collet collapse. Concentricity of ≤ 3 μm with GERC-HP collets.

- **Alternative:** HSS clamping nut **with** 0,4 mm collet collapse. Concentricity of ≤ 10 μm with GERC-B collets. Not suitable for sealed collets.

Description + A	Order-No. incl. MPC clamping nut	Order-No. incl. HSS clamping nut	D = Wrench Ø	max. 1/min	E	D1	α	L1	L2	L3	G
Clamping range Ø 1-10 mm - Collets GERC16											
MPC16T-HSK-A50-A=65	61153320655	61153320656	24	30.000	44	28,9	4,5°	36,5	---	---	---
MPC16T-HSK-A50-A=100	<b>61153321005</b>	<b>61153321006</b>	24	30.000	77	34,4	4,5°	71,5	32	25	M11x1
MPC16T-HSK-A50-A=130	61153321305	61153321306	24	30.000	102	39,4	4,5°	103	32	25	M11x1

### Suitable Accessories

Collets



Page 138ff

Clamping Nuts



Page 162ff

Wrenches



Page 160

Mounting Devices



Page 161

Adjustable  
Stop Screws



Page 165

Coolant Supply  
Tubes and Wrenches



Page 165

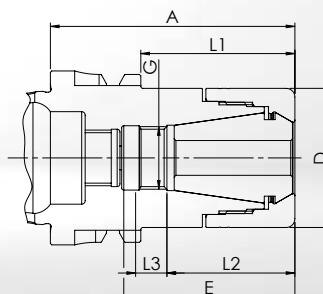
# DPC DYNAMIC PERFORMANCE CHUCKS

DIN 69893-1/ISO 12164-1

FORM AD - CENTRAL COOLANT SUPPLY

## HSK-A50 DPC

Multifunctional precision chuck, especially for finishing and HDC milling  
Cylindrical design for less interference contours



• **Chuck body and clamping nut separately balanced**  
G<sub>2,5</sub> at 25.000 1/min or U ≤ 1 gmm

• **Standard:** DPC high accuracy clamping nut **without** collet collapse. Concentricity of ≤ 3 μm with GERC-HP collets.

• **Alternative:** HSS clamping nut **with** 0,4 mm collet collapse. Concentricity of ≤ 10 μm with GERC-B collets. Not suitable for sealed collets.

Description + A	Order-No. incl. DPC clamping nut	Order-No. incl. HSS clamping nut	D = Wrench Ø	E	L1	L2	L3	G
Clamping range Ø 1-16 mm - Collets GERC25								
DPC25-HSK-A50-A=60	<b>63155300605</b>	<b>63155300606</b>	40	36,5	34,5	---	---	---
DPC25-HSK-A50-A=70	<b>63155300705</b>	<b>63155300706</b>	40	49,5	44	37	8	M18x1,5
DPC25-HSK-A50-A=100	63155301005	63155301006	40	76	74	39	25	M18x1,5
Clamping range Ø 2-20 mm - Collets GERC32								
DPC32-HSK-A50-A=70	<b>63156300705</b>	<b>63156300706</b>	50	47,5	44	---	---	---

### Suitable Accessories

Collets



Page 146ff

Clamping Nuts



Page 162ff

Wrenches



Page 160

Mounting Devices



Page 161

Adjustable  
Stop Screws



Page 165

Coolant Supply  
Tubes and Wrenches



Page 165

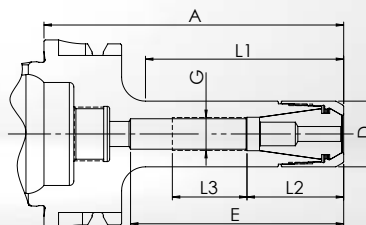
# HSK-A63 MPC

## MPC MINI PRECISION CHUCKS

DIN 69893-1/ISO 12164-1

FORM AD - CENTRAL COOLANT SUPPLY

Very slim precision chuck with optimum interference contour, ideal for HSC machining  
Cylindrical design for tight spaces



- **Chuck body and clamping nut separately balanced**  
G<sub>2,5</sub> at 25.000 1/min or U ≤ 1 gmm

- **Standard:** MPC high accuracy clamping nut **without** collet collapse. Concentricity of ≤ 3 μm with GERC-HP collets.

- **Alternative:** HSS clamping nut **with** 0,4 mm collet collapse. Concentricity of ≤ 10 μm with GERC-B collets. Not suitable for sealed collets.

Description + A	Order-No. incl. MPC clamping nut	Order-No. incl. HSS clamping nut	D = Wrench Ø	max. 1/min	E	L1	L2	L3	G
Clamping range Ø 1-7 mm - Collets GERC11									
MPC11-HSK-A63-A=70	<b>61161340705</b>	---	16	25.000	48	34	19	20	M8x1
MPC11-HSK-A63-A=100	<b>61161341005</b>	---	16	25.000	78	64	19	25	M8x1
MPC11-HSK-A63-A=130	<b>61161341305</b>	---	16	25.000	108	94	19	20	M8x1
MPC11-HSK-A63-A=160	<b>61161341605</b>	---	16	25.000	138	124	19	25	M8x1
Clamping range Ø 1-10 mm - Collets GERC16									
MPC16-HSK-A63-A=70	<b>61163340705</b>	<b>61163340706</b>	22	25.000	47	39	32	10	M11x1
MPC16-HSK-A63-A=100	<b>61163341005</b>	<b>61163341006</b>	22	25.000	71	66	32	25	M11x1
MPC16-HSK-A63-A=130	<b>61163341305</b>	<b>61163341306</b>	22	25.000	102	96	32	28	M11x1
MPC16-HSK-A63-A=160	<b>61163341605</b>	<b>61163341606</b>	22	25.000	97	122	32	30	M11x1

### Suitable Accessories

Collets



Page 135ff

Clamping Nuts



Page 162

Wrenches



Page 160

Mounting Devices



Page 161

Adjustable  
Stop Screws



Page 165

Coolant Supply  
Tubes and Wrenches



Page 165

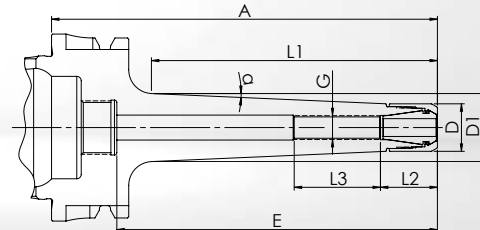
# MPC MINI PRECISION CHUCKS

DIN 69893-1/ISO 12164-1

FORM AD - CENTRAL COOLANT SUPPLY

## HSK-A63 MPC

Slim precision chuck for difficult machining tasks and HSC machining  
Tapered design for more stability



• **Chuck body and clamping nut separately balanced**  
G<sub>2,5</sub> at 25.000 1/min or U ≤ 1 gmm

• **Standard:** MPC high accuracy clamping nut **without** collet collapse. Concentricity of ≤ 3 μm with GERC-HP collets.

• **Alternative:** HSS clamping nut **with** 0,4 mm collet collapse. Concentricity of ≤ 10 μm with GERC-B collets. Not suitable for sealed collets.

Description + A	Order-No. incl. MPC clamping nut	Order-No. incl. HSS clamping nut	D = Wrench Ø	max. 1/min	E	D1	α	L1	L2	L3	G
Clamping range Ø 1-7 mm - Collets GERC11											
MPC11C-HSK-A63-A=100	61161331005	---	16	25.000	78	21	2,5°	66	19	35	M8x1
MPC11C-HSK-A63-A=130	61161331305	---	16	25.000	108	23	2,5°	96	19	35	M8x1
MPC11C-HSK-A63-A=160	61161331605	---	16	25.000	138	25,5	2,5°	127	19	35	M8x1
Clamping range Ø 1-10 mm - Collets GERC16											
MPC16C-HSK-A63-A=100	61163331005	61163331006	22	25.000	71	26,5	2,5°	69	32	37	M11x1
MPC16C-HSK-A63-A=130	61163331305	61163331306	22	25.000	102	28,5	2,5°	99	32	37	M11x1
MPC16C-HSK-A63-A=160	61163331605	61163331606	22	25.000	97	31,5	2,5°	129	32	37	M11x1

### Suitable Accessories

Collets



Page 135ff

Clamping Nuts



Page 162

Wrenches



Page 160

Mounting Devices



Page 161

Adjustable Stop Screws



Page 165

Coolant Supply Tubes and Wrenches



Page 165

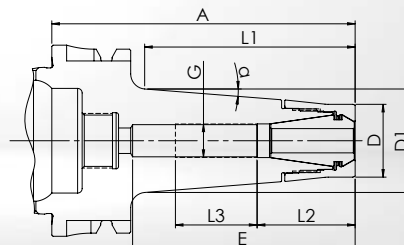
# HSK-A63 MPC

## MPC MINI PRECISION CHUCKS

DIN 69893-1/ISO 12164-1

FORM AD - CENTRAL COOLANT SUPPLY

Slim precision chuck for difficult cutting tasks and milling operations  
Tapered design with tapered clamping nut for more stability and clamping force



- **Chuck body and clamping nut separately balanced**  
G<sub>2,5</sub> at 25.000 1/min or U ≤ 1 gmm

- **Standard:** MPC high accuracy clamping nut **without** collet collapse. Concentricity of ≤ 3 μm with GERC-HP collets.

- **Alternative:** HSS clamping nut **with** 0,4 mm collet collapse. Concentricity of ≤ 10 μm with GERC-B collets. Not suitable for sealed collets.

Description + A	Order-No. incl. MPC clamping nut	Order-No. incl. HSS clamping nut	D = Wrench Ø	max. 1/min	E	D1	α	L1	L2	L3	G
Clamping range Ø 1-10 mm - Collets GERC16											
MPC16T-HSK-A63-A=100	<b>61163321005</b>	<b>61163321006</b>	24	25.000	75	34,5	4,5°	67	32	27	M11x1
MPC16T-HSK-A63-A=130	61163321305	61163321306	24	25.000	103	39	4,5°	99	32	27	M11x1
MPC16T-HSK-A63-A=160	<b>61163321605</b>	<b>61163321606</b>	24	25.000	107	36	2,5°	127	32	27	M11x1

### Suitable Accessories

Collets



Page 138ff

Clamping Nuts



Page 162ff

Wrenches



Page 160

Mounting Devices



Page 161

Adjustable Stop Screws



Page 165

Coolant Supply Tubes and Wrenches



Page 165

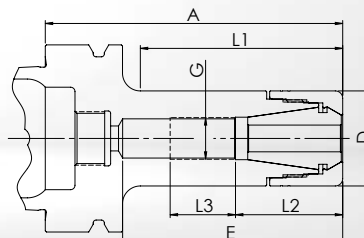
# DPC DYNAMIC PERFORMANCE CHUCKS

DIN 69893-1/ISO 12164-1

FORM AD - CENTRAL COOLANT SUPPLY

## HSK-A63 DPC

Multifunctional precision chuck, especially for finishing and HDC milling  
Cylindrical design for less interference contours



- **Chuck body and clamping nut separately balanced**  
G<sub>2,5</sub> at 25.000 1/min or U ≤ 1 gmm
- **Standard:** DPC high accuracy clamping nut **without** collet collapse. Concentricity of ≤ 3 μm with GERC-HP collets.
- **Alternative:** HSS clamping nut **with** 0,4 mm collet collapse. Concentricity of ≤ 10 μm with GERC-B collets. Not suitable for sealed collets.

Description + A	Order-No. incl. DPC clamping nut	Order-No. incl. HSS clamping nut	D = Wrench Ø	E	L1	L2	L3	G
Clamping range Ø 1-10 mm - Collets GERC16								
DPC16-HSK-A63-A=55	<b>63163300555</b>	<b>63163300556</b>	30	32	26,5	---	---	---
DPC16-HSK-A63-A=100	<b>63163301005</b>	<b>63163301006</b>	30	71	64	32	25	M11x1
DPC16-HSK-A63-A=130	<b>63163301305</b>	<b>63163301306</b>	30	97	94	32	28	M11x1
DPC16-HSK-A63-A=160	<b>63163301605</b>	<b>63163301606</b>	30	107	124	32	25	M11x1
DPC16-HSK-A63-A=200	63163302005	63163302006	30	137	164	32	25	M11x1
Clamping range Ø 1-13 mm - Collets GERC20								
DPC20-HSK-A63-A=60	63164300605	63164300606	32	34,5	33	---	---	---
DPC20-HSK-A63-A=100	<b>63164301005</b>	<b>63164301006</b>	32	74	68	36	22	M14x1
DPC20-HSK-A63-A=130	63164301305	63164301306	32	104	98	36	25	M14x1
DPC20-HSK-A63-A=160	63164301605	63164301606	32	118	128	36	46	M14x1
Clamping range Ø 1-16 mm - Collets GERC25								
DPC25-HSK-A63-A=60	<b>63165300605</b>	<b>63165300606</b>	40	37	28	---	---	---
DPC25-HSK-A63-A=100	<b>63165301005</b>	<b>63165301006</b>	40	71	68	43	23	M18x1,5
DPC25-HSK-A63-A=130	<b>63165301305</b>	<b>63165301306</b>	40	89	98	43	28	M18x1,5
DPC25-HSK-A63-A=160	<b>63165301605</b>	<b>63165301606</b>	40	104	128	43	35	M18x1,5
DPC25-HSK-A63-A=200	63165302005	63165302006	40	149	168	43	35	M18x1,5

For other DPC chucks with HSK-A63, see following page.

### Suitable Accessories

Collets



Page 138ff

Clamping Nuts



Page 162ff

Wrenches



Page 160

Mounting Devices



Page 161

Adjustable  
Stop Screws



Page 165

Coolant Supply  
Tubes and Wrenches



Page 165

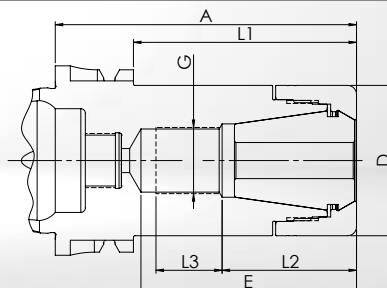
# HSK-A63 DPC

## DPC DYNAMIC PERFORMANCE CHUCKS

DIN 69893-1/ISO 12164-1

FORM AD - CENTRAL COOLANT SUPPLY

Multifunctional precision chuck, especially for finishing and HDC milling  
Cylindrical design for less interference contours



- **Chuck body and clamping nut separately balanced**  
G<sub>2,5</sub> at 25.000 1/min or U ≤ 1 gmm

- **Standard:** DPC high accuracy clamping nut **without** collet collapse. Concentricity of ≤ 3 μm with GERC-HP collets.

- **Alternative:** HSS clamping nut **with** 0,4 mm collet collapse. Concentricity of ≤ 10 μm with GERC-B collets. Not suitable for sealed collets.

Description + A	Order-No. incl. DPC clamping nut	Order-No. incl. HSS clamping nut	D = Wrench Ø	E	L1	L2	L3	G
Clamping range Ø 2-20 mm - Collets GERC32								
DPC32-HSK-A63-A=70	<b>63166300705</b>	<b>63166300706</b>	50	45	44	---	---	---
DPC32-HSK-A63-A=100	<b>63166301005</b>	<b>63166301006</b>	50	72	73	45	22	M22x1,5
DPC32-HSK-A63-A=130	<b>63166301305</b>	<b>63166301306</b>	50	102	103	45	35	M22x1,5
DPC32-HSK-A63-A=160	63166301605	63166301606	50	130	133	48	40	M22x1,5
Clamping range Ø 3-26 mm - Collets GERC40								
DPC40-HSK-A63-A=80	<b>63167300805</b>	---	63	56	54	---	---	---
DPC40-HSK-A63-A=120	63167301205	---	63	90	94	56	30	M28x1,5
DPC40-HSK-A63-A=160	63167301605	---	63	90	134	56	30	M28x1,5

### Suitable Accessories

Collets



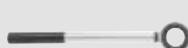
Page 150ff

Clamping Nuts



Page 162

Wrenches



Page 160

Mounting Devices



Page 161

Adjustable  
Stop Screws



Page 165

Coolant Supply  
Tubes and Wrenches



Page 165

# DPC DYNAMIC PERFORMANCE CHUCKS

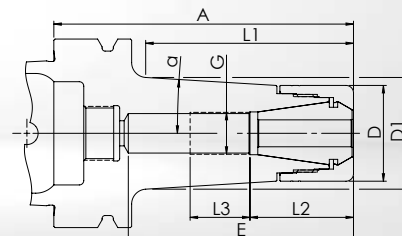
DIN 69893-1/ISO 12164-1

FORM AD - CENTRAL COOLANT SUPPLY

## HSK-A63

### DPC

Stable precision chuck for demanding tasks, especially in HDC milling  
Tapered design for better damping and higher stability



- **Chuck body and clamping nut separately balanced**  
G<sub>2,5</sub> at 25.000 1/min or U ≤ 1 gmm
- **Standard:** DPC high accuracy clamping nut **without** collet collapse. Concentricity of ≤ 3 μm with GERC-HP collets.
- **Alternative:** HSS clamping nut **with** 0,4 mm collet collapse. Concentricity of ≤ 10 μm with GERC-B collets. Not suitable for sealed collets.

Description + A	Order-No. incl. DPC clamping nut	Order-No. incl. HSS clamping nut	D = Wrench Ø	E	D1	α	L1	L2	L3	G
Clamping range Ø 1-10 mm - Collets GERC16										
DPC16C-HSK-A63-A=75	63163310755	63163310756	30	51	33	4,5°	42	32	15	M11x1
DPC16C-HSK-A63-A=100	63163311005	63163311006	30	75	35,5	3,5°	68	32	20	M11x1
DPC16C-HSK-A63-A=130	63163311305	63163311306	30	105	36,5	2,5°	97	32	20	M11x1
Clamping range Ø 1-13 mm - Collets GERC20										
DPC20C-HSK-A63-A=75	63164310755	63164310756	32	50	35	4,5°	45	34	10	M14x1
DPC20C-HSK-A63-A=100	63164311005	63164311006	32	75	37	3,5°	69	34	20	M14x1
DPC20C-HSK-A63-A=130	63164311305	63164311306	32	105	39	2,5°	99	34	20	M14x1
Clamping range Ø 1-16 mm - Collets GERC25										
DPC25C-HSK-A63-A=75	63165310755	63165310756	40	50	44	4,5°	45	---	---	---
DPC25C-HSK-A63-A=100	63165311005	63165311006	40	74	46	3,5°	71	43	25	M18x1,5
DPC25C-HSK-A63-A=130	63165311305	63165311306	40	104	47	2,5°	101	43	25	M18x1,5
Clamping range Ø 2-20 mm - Collets GERC32										
DPC32C-HSK-A63-A=75	63166310755	63166310756	50	71	51,5	4°	49	---	---	---

#### Suitable Accessories

Collets



Page 138ff

Clamping Nuts



Page 162ff

Wrenches



Page 160

Mounting Devices



Page 161

Adjustable Stop Screws



Page 165

Coolant Supply Tubes and Wrenches



Page 165



# HSK-A63 UPC

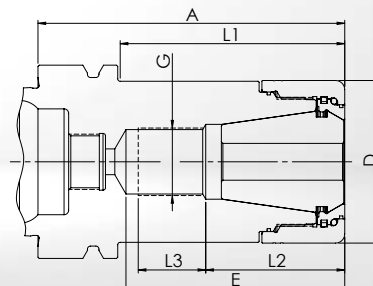
## UPC ULTRA POWER CHUCKS

DIN 69893-1/ISO 12164-1

FORM AD - CENTRAL COOLANT SUPPLY

HSK-A

Extremely stiff precision chuck for the most demanding tasks with predominantly radial load  
Cylindrical design with a multi-part clamping nut for optimised damping and maximum stability



- **Chuck body and clamping nut separately balanced**  
G6,3 at 18.000 1/min
- **Standard:** UPC high accuracy clamping nut **without** collet collapse. Concentricity of  $\leq 3 \mu\text{m}$  with GERC-HP collets.

Description + A	Order-No. incl. UPC clamping nut	D = Wrench Ø	E	L1	L2	L3	G
Clamping range Ø 2-20 mm - Collets GERC32							
UPC32-HSK-A63-A=70	<b>67166300705</b>	53	45	43	---	---	---
UPC32-HSK-A63-A=100	<b>67166301005</b>	53	72	74	45	22	M22x1,5
Clamping range Ø 3-26 mm - Collets GERC40							
UPC40-HSK-A63-A=80	<b>67167300805</b>	63	55	53	---	---	---

**Note about UPC40:** For longer A dimensions A=120 and A=160, see FPC page 53.

### Suitable Accessories

Collets



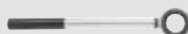
Page 150ff

Clamping Nuts



Page 164

Wrenches



Page 160

Mounting Devices



Page 161

Adjustable  
Stop Screws



Page 165

Coolant Supply  
Tubes and Wrenches



Page 165

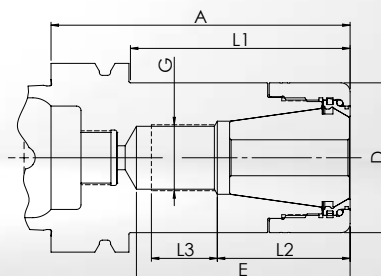
# FPC FULL PERFORMANCE CHUCKS

DIN 69893-1/ISO 12164-1

FORM AD - CENTRAL COOLANT SUPPLY

## HSK-A63 FPC

Stable precision chuck, especially for trochoidal milling and other HPC milling strategies  
Version with a multi-part clamping nut for optimised damping, especially for axial load



- **Chuck body and clamping nut separately balanced**  
G6,3 at 18.000 1/min
- **Standard:** FPC high accuracy clamping nut **without** collet collapse. Concentricity of  $\leq 3 \mu\text{m}$  with GERC-HP collets.

Description + A	Order-No. incl. FPC clamping nut	D = Wrench Ø	E	L1	L2	L3	G
Clamping range Ø 2-20 mm - Collets GERC32							
FPC32-HSK-A63-A=70	<b>63166300709</b>	50	45	44	---	---	---
FPC32-HSK-A63-A=100	<b>63166301009</b>	50	72	73	45	22	M22x1,5
FPC32-HSK-A63-A=130	<b>63166301309</b>	50	102	103	45	35	M22x1,5
FPC32-HSK-A63-A=160	63166301609	50	130	133	48	40	M22x1,5
Clamping range Ø 3-26 mm - Collets GERC40							
FPC40-HSK-A63-A=120	63167301209	63	90	94	56	30	M28x1,5
FPC40-HSK-A63-A=160	63167301609	63	90	134	56	30	M28x1,5

### Suitable Accessories

Collets



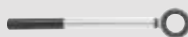
Page 150ff

Clamping Nuts



Page 164

Wrenches



Page 160

Mounting Devices



Page 161

Adjustable  
Stop Screws



Page 165

Coolant Supply  
Tubes and Wrenches



Page 165

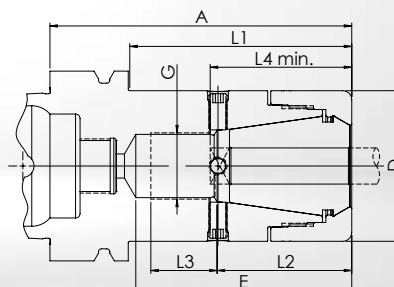
# HSK-A63 AFC

## AFC ADJUSTABLE FINISHING CHUCKS

DIN 69893-1/ISO 12164-1

FORM AD - CENTRAL COOLANT SUPPLY

Adjustable precision chuck for reaming and other tasks with maximum concentricity  
Design for adjustable concentricity with 4 screws on the circumference



- **Chuck body and clamping nut separately balanced**  
G6,3 at 18.000 1/min
- **Standard:** DPC high accuracy clamping nut **without** collet collapse, for collets GERC-HP, adjustable runout, especially for long overhang and reamers.

Clamping diameter	Possible range	L4 min.	Description + A	Order-No. incl. DPC clamping nut	D = Wrench Ø	E	L1	L2	L3	G
<b>Collets GERC25</b>										
7-10	7-10	43	AFC25-HSK-A63-A=100	63165305235	40	71	68	43	23	M18x1,5
11-13	10,1-13,5	43	AFC25-HSK-A63-A=100	63165305245	40	71	68	43	23	M18x1,5
14-16	13,51-16	43	AFC25-HSK-A63-A=100	63165305265	40	71	68	43	23	M18x1,5
<b>Collets GERC32</b>										
7-13	7-13,5	47	AFC32-HSK-A63-A=100	63166305245	50	72	73	45	22	M22x1,5
14-20	13,51-20	47	AFC32-HSK-A63-A=100	63166305265	50	72	73	45	22	M22x1,5
<b>Collets GERC40</b>										
10-16	9,51-16,5	55	AFC40-HSK-A63-A=120	63167305365	63	90	94	56	30	M28x1,5
17-22	16,51-22,5	55	AFC40-HSK-A63-A=120	63167305385	63	90	94	56	30	M28x1,5
23-26	22,51-26	55	AFC40-HSK-A63-A=120	63167305395	63	90	94	56	30	M28x1,5

Please note the minimum clamping length L4 required for the function and that the chuck is only approved for the respective clamping Ø. Other versions and clamping Ø can be offered after technical examination.

### Suitable Accessories

Collets



Page 146ff

Clamping Nuts



Page 162

Wrenches



Page 160

Mounting Devices



Page 161

Adjustable Stop Screws



Page 165

Coolant Supply Tubes and Wrenches



Page 165

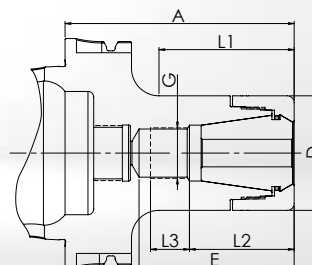
# DPC DYNAMIC PERFORMANCE CHUCKS

DIN 69893-1/ISO 12164-1

FORM AD - CENTRAL COOLANT SUPPLY

## HSK-A100 DPC

Multifunctional precision chuck, especially for finishing and HDC milling  
Cylindrical design for less interference contours



- **Chuck body and clamping nut separately balanced**  
G<sub>2,5</sub> at 25.000 1/min or U ≤ 1 gmm
- **Standard:** DPC high accuracy clamping nut **without** collet collapse. Concentricity of ≤ 3 μm with GERC-HP collets.
- **Alternative:** HSS clamping nut **with** 0,4 mm collet collapse. Concentricity of ≤ 10 μm with GERC-B collets. Not suitable for sealed collets.

Description + A	Order-No. incl. DPC clamping nut	Order-No. incl. HSS clamping nut	D = Wrench Ø	E	L1	L2	L3	G
Clamping range Ø 1-10 mm - Collets GERC16								
DPC16-HSK-A100-A=100	<b>63183301005</b>	<b>63183301006</b>	30	71	58	32	25	M11x1
DPC16-HSK-A100-A=130	63183301305	63183301306	30	101	89	32	25	M11x1
DPC16-HSK-A100-A=160	<b>63183301605</b>	<b>63183301606</b>	30	130	118	32	25	M11x1
Clamping range Ø 1-13 mm - Collets GERC20								
DPC20-HSK-A100-A=100	63184301005	63184301006	32	69	65	36	28	M14x1
DPC20-HSK-A100-A=160	63184301605	63184301606	32	108	125	36	46	M14x1
Clamping range Ø 1-16 mm - Collets GERC25								
DPC25-HSK-A100-A=100	<b>63185301005</b>	<b>63185301006</b>	40	68	59	42	20	M18x1,5
DPC25-HSK-A100-A=130	63185301305	63185301306	40	98	89	42	35	M18x1,5
DPC25-HSK-A100-A=160	63185301605	63185301606	40	128	119	42	35	M18x1,5
Clamping range Ø 2-20 mm - Collets GERC32								
DPC32-HSK-A100-A=100	<b>63186301005</b>	<b>63186301006</b>	50	67	59	45	17	M22x1,5
DPC32-HSK-A100-A=130	63186301305	63186301306	50	97	89	47	35	M22x1,5
DPC32-HSK-A100-A=160	<b>63186301605</b>	<b>63186301606</b>	50	99	119	47	35	M22x1,5
DPC32-HSK-A100-A=200	63186302005	63186302006	50	149	159	47	35	M22x1,5
Clamping range Ø 3-26 mm - Collets GERC40								
DPC40-HSK-A100-A=100	63187301005	---	63	65	65	---	---	---
DPC40-HSK-A100-A=130	63187301305	---	63	90	95	56	30	M28x1,5
DPC40-HSK-A100-A=160	63187301605	---	63	90	125	56	35	M28x1,5

### Suitable Accessories

Collets



Page 138ff

Clamping Nuts



Page 162ff

Wrenches



Page 160

Mounting Devices



Page 161

Adjustable Stop Screws



Page 165

Coolant Supply Tubes and Wrenches



Page 165

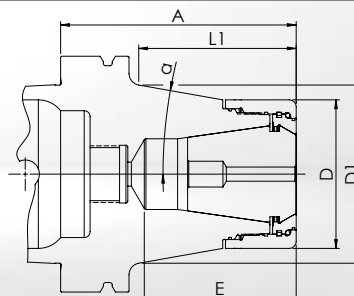
# HSK-A100 UPC

## UPC ULTRA POWER CHUCKS

DIN 69893-1/ISO 12164-1

FORM AD - CENTRAL COOLANT SUPPLY

Extremely stiff precision chuck for the most demanding tasks with predominantly radial load  
Tapered design with a multi-part clamping nut for optimised damping and maximum stability



- **Chuck body and clamping nut separately balanced**  
G6,3 at 18.000 1/min
- **Standard:** UPC high accuracy clamping nut **without** collet collapse. Concentricity of  $\leq 3 \mu\text{m}$  with GERC-HP collets.

Description + A	Order-No. incl. UPC clamping nut	D = Wrench ∅	E	D1	α	L1	L2	L3	G
Clamping range ∅ 2-20 mm - Collets GERC32									
UPC32C-HSK-A100-A=100	<b>67186311005</b>	53	68	66,5	10°	66	45	19	M22x1,5
Clamping range ∅ 3-26 mm - Collets GERC40									
UPC40C-HSK-A100-A=100	<b>67187311005</b>	63	65	75,5	10°	66,5	---	---	---

**Note about UPC40:** For longer A dimensions in cylindrical form A=130 and A=160, see FPC page 57.

### Suitable Accessories

Collets



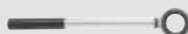
Page 150ff

Clamping Nuts



Page 164

Wrenches



Page 160

Mounting Devices



Page 161

Adjustable  
Stop Screws



Page 165

Coolant Supply  
Tubes and Wrenches



Page 165

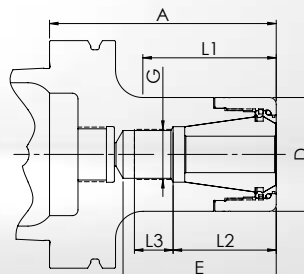
# FPC FULL PERFORMANCE CHUCKS

DIN 69893-1/ISO 12164-1

FORM AD - CENTRAL COOLANT SUPPLY

## HSK-A100 FPC

Stable precision chuck, especially for trochoidal milling and other HPC milling strategies  
Version with a multi-part clamping nut for optimised damping, especially for axial load



- **Chuck body and clamping nut separately balanced**  
G6,3 at 18.000 1/min
- **Standard:** FPC high accuracy clamping nut **without** collet collapse. Concentricity of  $\leq 3 \mu\text{m}$  with GERC-HP collets.

Description + A	Order-No. incl. FPC clamping nut	D = Wrench Ø	E	L1	L2	L3	G
Clamping range Ø 2-20 mm - Collets GERC32							
FPC32-HSK-A100-A=100	<b>63186301009</b>	50	67	59	45	17	M22x1,5
FPC32-HSK-A100-A=130	63186301309	50	97	89	47	35	M22x1,5
FPC32-HSK-A100-A=160	<b>63186301609</b>	50	99	119	47	35	M22x1,5
FPC32-HSK-A100-A=200	63186302009	50	149	159	47	35	M22x1,5
Clamping range Ø 3-26 mm - Collets GERC40							
FPC40-HSK-A100-A=100	63187301009	63	65	65	---	---	---
FPC40-HSK-A100-A=130	63187301309	63	90	95	56	30	M28x1,5
FPC40-HSK-A100-A=160	63187301609	63	90	125	56	35	M28x1,5

### Suitable Accessories

Collets



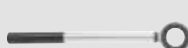
Page 150ff

Clamping Nuts



Page 164

Wrenches



Page 160

Mounting Devices



Page 161

Adjustable  
Stop Screws



Page 165

Coolant Supply  
Tubes and Wrenches



Page 165

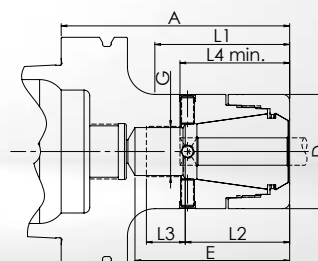
# HSK-A100 AFC

## AFC ADJUSTABLE FINISHING CHUCKS

DIN 69893-1/ISO 12164-1

FORM AD - CENTRAL COOLANT SUPPLY

Adjustable precision chuck for reaming and other tasks with maximum concentricity  
Design for adjustable concentricity with 4 screws on the circumference



- **Chuck body and clamping nut separately balanced**  
G6,3 at 18.000 1/min
- **Standard:** DPC high accuracy clamping nut **without** collet collapse, for collets GERC-HP, adjustable runout, especially for long overhang and reamers.

Clamping diameter	Possible range	L4 min.	Description + A	Order-No. incl. DPC clamping nut	D = Wrench Ø	E	L1	L2	L3	G
<b>Collets GERC25</b>										
7-10	7-10	43	AFC25-HSK-A100-A=100	63185305235	40	68	59	43	20	M18x1,5
11-13	10,1-13,5	43	AFC25-HSK-A100-A=100	63185305245	40	68	59	43	20	M18x1,5
14-16	13,51-16	43	AFC25-HSK-A100-A=100	63185305265	40	68	59	43	20	M18x1,5
<b>Collets GERC32</b>										
7-13	7-13,5	47	AFC32-HSK-A100-A=100	63186305245	50	68	59	45	17	M22x1,5
14-20	13,51-20	47	AFC32-HSK-A100-A=100	63186305265	50	68	59	45	17	M22x1,5
<b>Collets GERC40</b>										
7-15	7-15,5	55	AFC40-HSK-A100-A=100	63187305245	63	65	65	---	---	---
16-26	15,51-26	55	AFC40-HSK-A100-A=100	63187305265	63	65	65	---	---	---

Please note the minimum clamping length L4 required for the function and that the chuck is only approved for the respective clamping Ø. Other versions and clamping Ø can be offered after technical examination.

### Suitable Accessories

Collets



Page 146ff

Clamping Nuts



Page 162

Wrenches



Page 160

Mounting Devices



Page 161

Adjustable Stop Screws



Page 165

Coolant Supply Tubes and Wrenches



Page 165

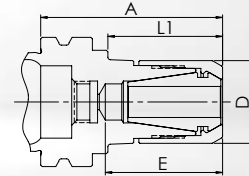
# MPC MINI PRECISION CHUCKS

DIN 69893-5

FORM AD - CENTRAL COOLANT SUPPLY

## HSK-E25 MPC

Very slim precision chuck with optimum interference contour, ideal for HSC machining  
Cylindrical design for tight spaces



- **Chuck body and clamping nut separately balanced**  
G<sub>2,5</sub> at 25.000 1/min or U ≤ 1 gmm
- **Standard:** MPC high accuracy clamping nut **without** collet collapse. Concentricity of ≤ 3 μm with GERC-HP collets.
- **Alternative:** HSS clamping nut **with** 0,4 mm collet collapse. Concentricity of ≤ 10 μm with GERC-B collets. Not suitable for sealed collets.

Description + A	Order-No. incl. MPC clamping nut	Order-No. incl. HSS clamping nut	D = Wrench Ø	max. 1/min	E	L1	L2	L3	G
Clamping range Ø 1-5 mm - Collets GERC8									
MPC8-HSK-E25-A=35	61320340355	---	10	60.000	21	21	---	---	---
Clamping range Ø 1-7 mm - Collets GERC11									
MPC11-HSK-E25-A=35	61321340355	---	16	60.000	22,5	22	---	---	---
Clamping range Ø 1-10 mm - Collets GERC16									
MPC16-HSK-E25-A=45	<b>61323340455</b>	<b>61323340456</b>	22	60.000	30	34	---	---	---

### Suitable Accessories

Collets



Page 134ff

Clamping Nuts



Page 162ff

Wrenches



Page 160

Mounting Devices



Page 161

Adjustable Stop Screws



Page 165

Coolant Supply Tubes and Wrenches



Page 165



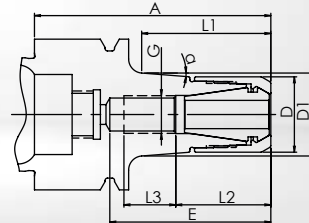
# HSK-E32 MPC

## MPC MINI PRECISION CHUCKS

DIN 69893-5

FORM AD - CENTRAL COOLANT SUPPLY

Slim precision chuck for difficult machining tasks and HSC machining  
Tapered design for more stability



- **Chuck body and clamping nut separately balanced**  
G<sub>2,5</sub> at 25.000 1/min or U ≤ 1 gmm

- **Standard:** MPC high accuracy clamping nut **without** collet collapse. Concentricity of ≤ 3 μm with GERC-HP collets.

- **Alternative:** HSS clamping nut **with** 0,4 mm collet collapse. Concentricity of ≤ 10 μm with GERC-B collets. Not suitable for sealed collets.

Description + A	Order-No. incl. MPC clamping nut	Order-No. incl. HSS clamping nut	D = Wrench Ø	max. 1/min	E	D1	α	L1	L2	L3	G
Clamping range Ø 1-5 mm - Collets GERC8											
MPC8C-HSK-E32-A=50	61330330505	---	10	50.000	33	12,5	4,5°	27,5	---	---	---
Clamping range Ø 1-7 mm - Collets GERC11											
MPC11C-HSK-E32-A=50	61331330505	---	16	50.000	34	17,5	4,5°	27	20	11	M8x1
Clamping range Ø 1-10 mm - Collets GERC16											
MPC16C-HSK-E32-A=55	<b>61333330555</b>	<b>61333330556</b>	22	50.000	32	23,2	2,5°	34	34	7	M6x1

### Suitable Accessories

Collets



Page 134ff

Clamping Nuts



Page 162ff

Wrenches



Page 160

Mounting Devices



Page 161

Adjustable  
Stop Screws



Page 165

Coolant Supply  
Tubes and Wrenches



Page 165

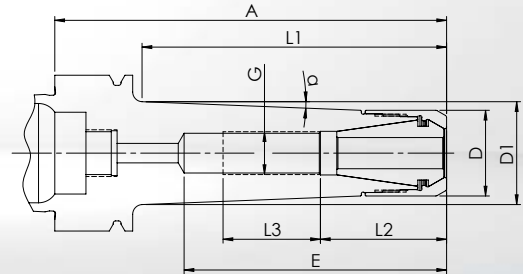
# MPC MINI PRECISION CHUCKS

DIN 69893-5

FORM AD - CENTRAL COOLANT SUPPLY

HSK-E40  
MPC

Slim precision chuck for difficult machining tasks and HSC machining  
Tapered design for more stability



• **Chuck body and clamping nut separately balanced**  
G<sub>2,5</sub> at 25.000 1/min or U ≤ 1 gmm

• **Standard:** MPC high accuracy clamping nut **without** collet collapse. Concentricity of ≤ 3 μm with GERC-HP collets.

• **Alternative:** HSS clamping nut **with** 0,4 mm collet collapse. Concentricity of ≤ 10 μm with GERC-B collets. Not suitable for sealed collets.

Description + A	Order-No. incl. MPC clamping nut	Order-No. incl. HSS clamping nut	D = Wrench Ø	max. 1/min	E	D1	α	L1	L2	L3	G
Clamping range Ø 1-7 mm - Collets GERC11											
MPC11C-HSK-E40-A=50	<b>61341330505</b>	---	16	42.000	31	17	4,5°	22,5	19	10	M8x1
MPC11C-HSK-E40-A=100	<b>61341331005</b>	---	16	40.000	65	25,5	4,5°	75,5	19	25	M8x1
MPC11C-HSK-E40-A=130	61341331305	---	16	35.000	65	30,5	4,5°	108	19	25	M8x1
MPC11C-HSK-E40-A=160	61341331605	---	16	27.000	65	32	4,5°	139	19	25	M8x1
Clamping range Ø 1-10 mm - Collets GERC16											
MPC16C-HSK-E40-A=55	<b>61343330555</b>	<b>61343330556</b>	22	42.000	32	23,5	4,5°	31,5	---	---	---
MPC16C-HSK-E40-A=100	<b>61343331005</b>	<b>61343331006</b>	22	40.000	67	26	2,5°	78	32	25	M11x1

## Suitable Accessories

Collets



Page 135ff

Clamping Nuts



Page 162ff

Wrenches



Page 160

Mounting Devices



Page 161

Adjustable Stop Screws



Page 165

Coolant Supply Tubes and Wrenches



Page 165

# HSK-E40

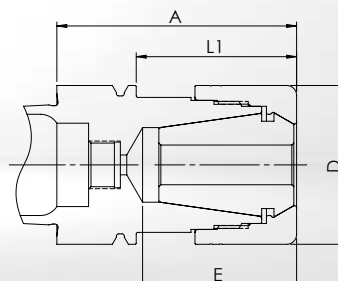
## DPC

# DPC DYNAMIC PERFORMANCE CHUCKS

DIN 69893-5

FORM AD - CENTRAL COOLANT SUPPLY

Multifunctional precision chuck, especially for finishing and HDC milling  
Cylindrical design for less interference contours



• **Chuck body and clamping nut separately balanced**  
G<sub>2,5</sub> at 25.000 1/min or U ≤ 1 gmm

• **Standard:** DPC high accuracy clamping nut **without** collet collapse. Concentricity of ≤ 3 μm with GERC-HP collets.

• **Alternative:** HSS clamping nut **with** 0,4 mm collet collapse. Concentricity of ≤ 10 μm with GERC-B collets. Not suitable for sealed collets.

Description + A	Order-No. incl. DPC clamping nut	Order-No. incl. HSS clamping nut	D = Wrench Ø	E	L1	L2	L3	G
Clamping range Ø 1-16 mm - Collets GERC25								
DPC25-HSK-E40-A=60	<b>63345300605</b>	<b>63345300606</b>	40	38,5	40	---	---	---

### Suitable Accessories

Collets



Page 146ff

Clamping Nuts



Page 162ff

Wrenches



Page 160

Mounting Devices



Page 161

Adjustable  
Stop Screws



Page 165

Coolant Supply  
Tubes and Wrenches



Page 165

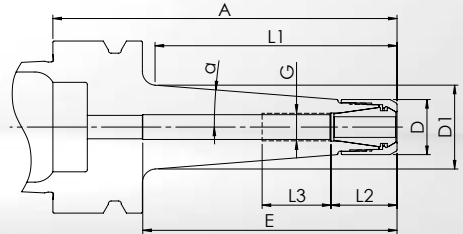
# MPC MINI PRECISION CHUCKS

DIN 69893-5

FORM AD - CENTRAL COOLANT SUPPLY

HSK-E50  
MPC

Slim precision chuck for difficult machining tasks and HSC machining  
Tapered design for more stability



• **Chuck body and clamping nut separately balanced**  
G<sub>2,5</sub> at 25.000 1/min or U ≤ 1 gmm

• **Standard:** MPC high accuracy clamping nut **without** collet collapse. Concentricity of ≤ 3 μm with GERC-HP collets.

• **Alternative:** HSS clamping nut **with** 0,4 mm collet collapse. Concentricity of ≤ 10 μm with GERC-B collets. Not suitable for sealed collets.

Description + A	Order-No. incl. MPC clamping nut	Order-No. incl. HSS clamping nut	D = Wrench ∅	max. 1/min	E	D1	α	L1	L2	L3	G
Clamping range ∅ 1-7 mm - Collets GERC11											
MPC11C-HSK-E50-A=60	61351330605	---	16	30.000	37	18	4,5°	30	18,5	12	M8x1
MPC11C-HSK-E50-A=100	61351331005	---	16	30.000	73	24,5	4,5°	70	19	20	M8x1
Clamping range ∅ 1-10 mm - Collets GERC16											
MPC16C-HSK-E50-A=60	61353330605	61353330606	22	30.000	32	23,5	4,5°	30	---	---	---
MPC16C-HSK-E50-A=100	<b>61353331005</b>	<b>61353331006</b>	22	30.000	73	26	2,5°	68,5	32	25	M11x1

## Suitable Accessories

Collets



Page 135ff

Clamping Nuts



Page 162ff

Wrenches



Page 160

Mounting Devices



Page 161

Adjustable  
Stop Screws



Page 165

Coolant Supply  
Tubes and Wrenches



Page 165

# HSK-E50

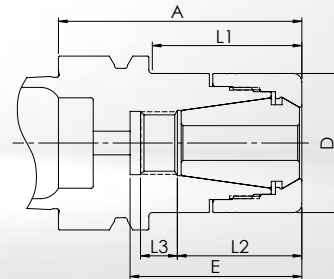
## DPC

# DPC DYNAMIC PERFORMANCE CHUCKS

DIN 69893-5

FORM AD - CENTRAL COOLANT SUPPLY

Multifunctional precision chuck, especially for finishing and HDC milling  
Cylindrical design for less interference contours



- **Chuck body and clamping nut separately balanced**  
G<sub>2,5</sub> at 25.000 1/min or U ≤ 1 gmm

- **Standard:** DPC high accuracy clamping nut **without** collet collapse. Concentricity of ≤ 3 μm with GERC-HP collets.

- **Alternative:** HSS clamping nut **with** 0,4 mm collet collapse. Concentricity of ≤ 10 μm with GERC-B collets. Not suitable for sealed collets.

Description + A	Order-No. incl. DPC clamping nut	Order-No. incl. HSS clamping nut	D = Wrench Ø	E	L1	L2	L3	G
Clamping range Ø 1-16 mm - Collets GERC25								
DPC25-HSK-E50-A=70	<b>63355300705</b>	<b>63355300706</b>	40	49	43	35	10	M11x1

### Suitable Accessories

Collets



Page 146ff

Clamping Nuts



Page 162ff

Wrenches



Page 160

Mounting Devices



Page 161

Adjustable  
Stop Screws



Page 165

Coolant Supply  
Tubes and Wrenches



Page 165

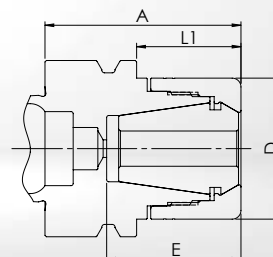
# DPC DYNAMIC PERFORMANCE CHUCKS

DIN 69893-6

FORM AD - CENTRAL COOLANT SUPPLY

## HSK-F50 DPC

Multifunctional precision chuck, especially for finishing and HDC milling  
Cylindrical design for less interference contours



- **Chuck body and clamping nut separately balanced**  
G2,5 at 25.000 1/min or U ≤ 1 gmm

- **Standard:** DPC high accuracy clamping nut **without** collet collapse. Concentricity of ≤ 3 µm with GERC-HP collets.

- **Alternative:** HSS clamping nut **with** 0,4 mm collet collapse. Concentricity of ≤ 10 µm with GERC-B collets. Not suitable for sealed collets.

Description + A	Order-No. incl. DPC clamping nut	Order-No. incl. HSS clamping nut	D = Wrench Ø	E	L1	L2	L3	G
Clamping range Ø 1-16 mm - Collets GERC25								
DPC25-HSK-F50-A=55	<b>63455300555</b>	<b>63455300556</b>	40	38	29	---	---	---

HSK-F

### Suitable Accessories

Collets



Page 146ff

Clamping Nuts



Page 162

Wrenches



Page 160

Mounting Devices



Page 161

Adjustable  
Stop Screws



Page 165

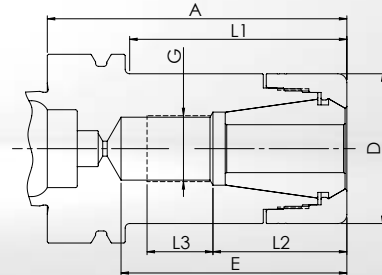
# HSK-F63 DPC

## DPC DYNAMIC PERFORMANCE CHUCKS

DIN 69893-6

FORM AD - CENTRAL COOLANT SUPPLY

Multifunctional precision chuck, especially for finishing and HDC milling  
Cylindrical design for less interference contours



- **Chuck body and clamping nut separately balanced**  
G<sub>2,5</sub> at 25.000 1/min or U ≤ 1 gmm

- **Standard:** DPC high accuracy clamping nut **without** collet collapse. Concentricity of ≤ 3 μm with GERC-HP collets.

- **Alternative:** HSS clamping nut **with** 0,4 mm collet collapse. Concentricity of ≤ 10 μm with GERC-B collets. Not suitable for sealed collets.

Description + A	Order-No. incl. DPC clamping nut	Order-No. incl. HSS clamping nut	D = Wrench Ø	E	L1	L2	L3	G
Clamping range Ø 1-10 mm - Collets GERC16								
DPC16-HSK-F63-A=100	<b>63463301005</b>	<b>63463301006</b>	30	77	64	32	25	M11x1
Clamping range Ø 1-16 mm - Collets GERC25								
DPC25-HSK-F63-A=100	63465301005	63465301006	40	73	68	42	23	M18x1,5
Clamping range Ø 2-20 mm - Collets GERC32								
DPC32-HSK-F63-A=65	<b>63466300655</b>	<b>63466300656</b>	50	45	38	---	---	---
DPC32-HSK-F63-A=100	63466301005	63466301006	50	75	72	44	22	M22x1,5

### Suitable Accessories

Collets



Page 138ff

Clamping Nuts



Page 162ff

Wrenches



Page 160

Mounting Devices



Page 161

Adjustable  
Stop Screws



Page 165

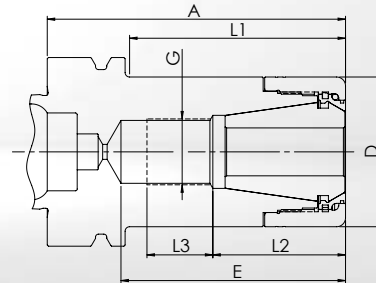
# FPC FULL PERFORMANCE CHUCKS

DIN 69893-6

FORM AD - CENTRAL COOLANT SUPPLY

## HSK-F63 FPC

Stable precision chuck, especially for trochoidal milling and other HPC milling strategies  
Version with a multi-part clamping nut for optimised damping, especially for axial load



- **Chuck body and clamping nut separately balanced**  
G6,3 at 18.000 1/min
- **Standard:** FPC high accuracy clamping nut **without** collet collapse. Concentricity of  $\leq 3 \mu\text{m}$  with GERC-HP collets.

Description + A	Order-No. incl. FPC clamping nut	D = Wrench Ø	E	L1	L2	L3	G
Clamping range Ø 2-20 mm - Collets GERC32							
FPC32-HSK-F63-A=65	<b>63466300659</b>	50	45	38	---	---	---
FPC32-HSK-F63-A=100	63466301009	50	75	72	44	22	M22x1,5

HSK-F

### Suitable Accessories

Collets



Page 150ff

Clamping Nuts



Page 164

Wrenches



Page 160

Mounting Devices



Page 161

Adjustable  
Stop Screws



Page 165