

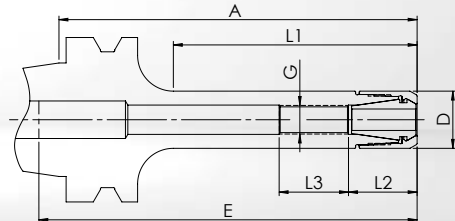
MPC MINI PRECISION CHUCKS

JIS B 6339 (DIN ISO 7388-2)

FORM AD - CENTRAL COOLANT SUPPLY

BT30
MPC

Very slim precision chuck with optimum interference contour, ideal for HSC machining
Cylindrical design for tight spaces



- **Chuck body and clamping nut separately balanced**
G_{2,5} at 25.000 1/min or U ≤ 1 gmm
- **Standard:** MPC high accuracy clamping nut **without** collet collapse. Concentricity of ≤ 3 μm with GERC-HP collets.

Description + A	Order-No. incl. MPC clamping nut	D = Wrench Ø	max. 1/min	E	L1	L2	L3	G
Clamping range Ø 1-5 mm - Collets GERC8								
MPC8-BT30-A=75	60420340755	10	25.000	80	43	17	10	M8x1
Clamping range Ø 1-7 mm - Collets GERC11								
MPC11-BT30-A=50	60421340505	16	25.000	70	18	19	20	M8x1
MPC11-BT30-A=100	60421341005	16	25.000	120	68	19	20	M8x1

BT

Suitable Accessories

Collets



Page 134ff

Clamping Nuts



Page 162

Wrenches



Page 160

Mounting Devices



Page 161

Adjustable
Stop Screws



Page 165

Pull Studs



Page 167ff

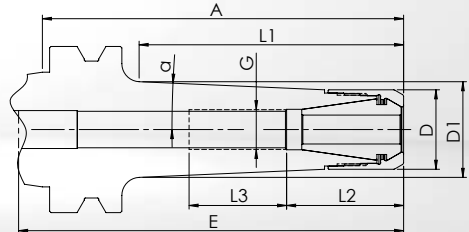
BT30 MPC

MPC MINI PRECISION CHUCKS

JIS B 6339 (DIN ISO 7388-2)

FORM AD - CENTRAL COOLANT SUPPLY

Slim precision chuck for difficult machining tasks and HSC machining
Tapered design for more stability



- **Chuck body and clamping nut separately balanced**
G_{2,5} at 25.000 1/min or U ≤ 1 gmm

- **Standard:** MPC high accuracy clamping nut **without** collet collapse. Concentricity of ≤ 3 μm with GERC-HP collets.

- **Alternative:** HSS clamping nut **with** 0,4 mm collet collapse. Concentricity of ≤ 10 μm with GERC-B collets. Not suitable for sealed collets.

Description + A	Order-No. incl. MPC clamping nut	Order-No. incl. HSS clamping nut	D = Wrench Ø	max. 1/min	E	D1	α	L1	L2	L3	G
Clamping range Ø 1-7 mm - Collets GERC11											
MPC11C-BT30-A=100	60421331005	---	16	25.000	110	32	2,5°	73	19	40	M8x1
MPC11C-BT30-A=130	60421331305	---	16	25.000	140	32,5	5,5°	102,5	19	20	M8x1
MPC11C-BT30-A=160	60421331605	---	16	25.000	170	34,5	4,5°	133,5	19	20	M8x1
Clamping range Ø 1-10 mm - Collets GERC16											
MPC16C-BT30-A=100	60423331005	60423331006	22	25.000	100	30	2,5°	73	32	40	M11x1

Suitable Accessories

Collets



Page 135ff

Clamping Nuts



Page 162ff

Wrenches



Page 160

Mounting Devices



Page 161

Adjustable Stop Screws



Page 165

Pull Studs



Page 167ff

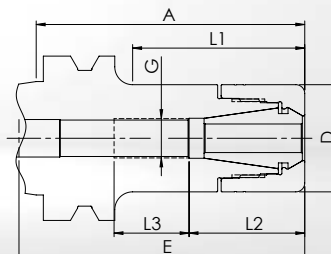
DPC DYNAMIC PERFORMANCE CHUCKS

JIS B 6339 (DIN ISO 7388-2)

FORM AD - CENTRAL COOLANT SUPPLY

BT30
DPC

Multifunctional precision chuck, especially for finishing and HDC milling
Cylindrical design for less interference contours



- **Chuck body and clamping nut separately balanced**
G_{2,5} at 25.000 1/min or U ≤ 1 gmm
- **Standard:** DPC high accuracy clamping nut **without** collet collapse. Concentricity of ≤ 3 μm with GERC-HP collets.
- **Alternative:** HSS clamping nut **with** 0,4 mm collet collapse. Concentricity of ≤ 10 μm with GERC-B collets. Not suitable for sealed collets.

Description + A	Order-No. incl. DPC clamping nut	Order-No. incl. HSS clamping nut	D = Wrench Ø	E	L1	L2	L3	G
Clamping range Ø 1-10 mm - Collets GERC16								
DPC16-BT30-A=50	62423300505	62423300506	30	70	24	32	25	M11x1
DPC16-BT30-A=60	62423300605	62423300606	30	80	33	32	21	M11x1
DPC16-BT30-A=75	62423300755	62423300756	30	95	48	32	21	M11x1
DPC16-BT30-A=90	62423300905	62423300906	30	110	63	32	21	M11x1
DPC16-BT30-A=105	62423301055	62423301056	30	120	77	32	25	M11x1
DPC16-BT30-A=120	62423301205	62423301206	30	95	93	32	25	M11x1
Clamping range Ø 1-13 mm - Collets GERC20								
DPC20-BT30-A=60	62424300605	62424300606	32	65	35	36	22	M14x1
DPC20-BT30-A=75	62424300755	62424300756	32	65	50	36	22	M14x1
DPC20-BT30-A=90	62424300905	62424300906	32	80	65	36	22	M14x1
DPC20-BT30-A=105	62424301055	62424301056	32	95	80	36	22	M14x1
DPC20-BT30-A=120	62424301205	62424301206	32	96	95	36	22	M14x1

For other DPC chucks with BT30, see following page.

Suitable Accessories

Collets



Page 138ff

Clamping Nuts



Page 162ff

Wrenches



Page 160

Mounting Devices



Page 161

Adjustable Stop Screws



Page 165

Pull Studs



Page 167ff

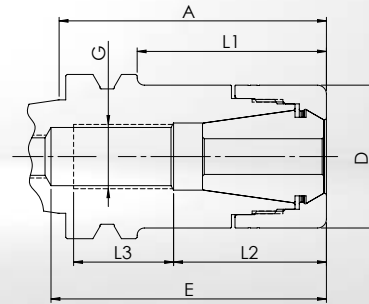
BT30 DPC

DPC DYNAMIC PERFORMANCE CHUCKS

JIS B 6339 (DIN ISO 7388-2)

FORM AD - CENTRAL COOLANT SUPPLY

Multifunctional precision chuck, especially for finishing and HDC milling
Cylindrical design for less interference contours



- **Chuck body and clamping nut separately balanced**
G_{2,5} at 25.000 1/min or U ≤ 1 gmm

- **Standard:** DPC high accuracy clamping nut **without** collet collapse. Concentricity of ≤ 3 μm with GERC-HP collets.

- **Alternative:** HSS clamping nut **with** 0,4 mm collet collapse. Concentricity of ≤ 10 μm with GERC-B collets. Not suitable for sealed collets.

Description + A	Order-No. incl. DPC clamping nut	Order-No. incl. HSS clamping nut	D = Wrench Ø	E	L1	L2	L3	G
Clamping range Ø 1-16 mm - Collets GERC25								
DPC25-BT30-A=60	62425300605	62425300606	40	77	36	42	24	M18x1,5
DPC25-BT30-A=75	62425300755	62425300756	40	77	51	42	28	M18x1,5
DPC25-BT30-A=90	62425300905	62425300906	40	87	66	42	35	M18x1,5
DPC25-BT30-A=105	62425301055	62425301056	40	92	81	42	44	M18x1,5
DPC25-BT30-A=120	62425301205	62425301206	40	112	96	42	35	M18x1,5
Clamping range Ø 2-20 mm - Collets GERC32								
DPC32-BT30-A=60	62426300605	62426300606	50	63	38	46	20	M22x1,5
DPC32-BT30-A=75	62426300755	62426300756	50	80	53	46	23	M22x1,5
DPC32-BT30-A=90	62426300905	62426300906	50	90	68	46	30	M22x1,5
DPC32-BT30-A=105	62426301055	62426301056	50	90	78	46	28	M22x1,5

Suitable Accessories

Collets



Page 146ff

Clamping Nuts



Page 162ff

Wrenches



Page 160

Mounting Devices



Page 161

Adjustable
Stop Screws



Page 165

Pull Studs



Page 167ff

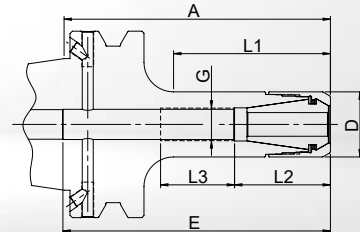
MPC MINI PRECISION CHUCKS

DIN 69871-1 (DIN ISO 7388-1)

FORM AD/B - COOLANT SUPPLY CENTRAL / VIA THE COLLAR (= B)

BT40
MPC

Very slim precision chuck with optimum interference contour, ideal for HSC machining
Cylindrical design for tight spaces



• **Chuck body and clamping nut separately balanced**
G_{2,5} at 25.000 1/min or U ≤ 1 gmm

• **Standard:** MPC high accuracy clamping nut **without** collet collapse. Concentricity of ≤ 3 μm with GERC-HP collets.

• **Alternative:** HSS clamping nut **with** 0,4 mm collet collapse. Concentricity of ≤ 10 μm with GERC-B collets. Not suitable for sealed collets.

Description + A	Order-No. incl. MPC clamping nut	Order-No. incl. HSS clamping nut	D = Wrench Ø	max. 1/min	E	L1	L2	L3	G
Clamping range Ø 1-7 mm - Collets GERC11									
MPC11-BTB40-A=75	60541340755	---	16	25.000	105	38	19	20	M8x1
MPC11-BTB40-A=100	60541341005	---	16	25.000	130	63	19	30	M8x1
MPC11-BTB40-A=120	60541341205	---	16	25.000	150	83	19	20	M8x1
MPC11-BTB40-A=160	60541341605	---	16	25.000	180	123	19	28	M8x1
Clamping range Ø 1-10 mm - Collets GERC16									
MPC16-BTB40-A=75	60543340755	60543340756	22	25.000	110	38	32	25	M11x1
MPC16-BTB40-A=90	60543340905	60543340906	22	25.000	120	53	32	25	M11x1
MPC16-BTB40-A=120	60543341205	60543341206	22	25.000	105	83	32	25	M11x1
MPC16-BTB40-A=150	60543341505	60543341506	22	25.000	170	113	32	25	M11x1

Suitable Accessories

Collets



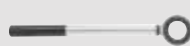
Page 135ff

Clamping Nuts



Page 162ff

Wrenches



Page 160

Mounting Devices



Page 161

Adjustable Stop Screws



Page 165

Pull Studs



Page 167ff

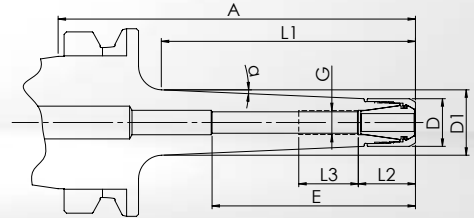
BT40 MPC

MPC MINI PRECISION CHUCKS

JIS B 6339 (DIN ISO 7388-2)

FORM AD - CENTRAL COOLANT SUPPLY

Slim precision chuck for difficult machining tasks and HSC machining
Tapered design for more stability



• **Chuck body and clamping nut separately balanced**
G_{2,5} at 25.000 1/min or U ≤ 1 gmm

• **Standard:** MPC high accuracy clamping nut **without** collet collapse. Concentricity of ≤ 3 μm with GERC-HP collets.

• **Alternative:** HSS clamping nut **with** 0,4 mm collet collapse. Concentricity of ≤ 10 μm with GERC-B collets. Not suitable for sealed collets.

Description + A	Order-No. incl. MPC clamping nut	Order-No. incl. HSS clamping nut	D = Wrench Ø	max. 1/min	E	D1	α	L1	L2	L3	G
Clamping range Ø 1-7 mm - Collets GERC11											
MPC11C-BT40-A=100	60441331005	---	16	25.000	130	20	2,5°	63	19	30	M8x1
MPC11C-BT40-A=120	60441331205	---	16	25.000	150	22	2,5°	85	19	30	M8x1
MPC11C-BT40-A=160	60441331605	---	16	25.000	170	26	2,5°	125	19	30	M8x1
Clamping range Ø 1-10 mm - Collets GERC16											
MPC16C-BT40-A=100	60443331005	60443331006	22	25.000	130	26	2,5°	68	32	35	M11x1
MPC16C-BT40-A=120	60443331205	60443331206	22	25.000	150	28	2,5°	88	32	35	M11x1
MPC16C-BT40-A=160	60443331605	60443331606	22	25.000	180	31,5	2,5°	128	32	35	M11x1

Suitable Accessories

Collets



Page 135ff

Clamping Nuts



Page 162ff

Wrenches



Page 160

Mounting Devices



Page 161

Adjustable Stop Screws



Page 165

Pull Studs



Page 167ff

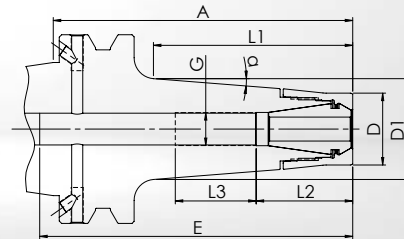
MPC MINI PRECISION CHUCKS

DIN 69871-1 (DIN ISO 7388-1)

FORM AD/B - COOLANT SUPPLY CENTRAL / VIA THE COLLAR (= B)

BT40
MPC

Slim precision chuck for difficult cutting tasks and milling operations
Tapered design with tapered clamping nut for more stability and clamping force



- **Chuck body and clamping nut separately balanced**
G_{2,5} at 25.000 1/min or U ≤ 1 gmm
- **Standard:** MPC high accuracy clamping nut **without** collet collapse. Concentricity of ≤ 3 μm with GERC-HP collets.
- **Alternative:** HSS clamping nut **with** 0,4 mm collet collapse. Concentricity of ≤ 10 μm with GERC-B collets. Not suitable for sealed collets.

Description + A	Order-No. incl. MPC clamping nut	Order-No. incl. HSS clamping nut	D = Wrench Ø	max. 1/min	E	D1	α	L1	L2	L3	G
Clamping range Ø 1-10 mm - Collets GERC16											
MPC16T-BTB40-A=100	60543321005	60543321006	24	25.000	130	34	4,5°	68	32	27	M11x1
MPC16T-BTB40-A=135	60543321355	60543321356	24	25.000	165	39	4,5°	103	32	27	M11x1
MPC16T-BTB40-A=160	60543321605	60543321606	24	25.000	180	44	4,5°	128	32	27	M11x1

BT

Suitable Accessories

Collets



Page 138ff

Clamping Nuts



Page 162ff

Wrenches



Page 160

Mounting Devices



Page 161

Adjustable Stop Screws



Page 165

Pull Studs



Page 167ff

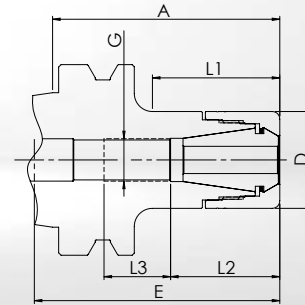
BT40 DPC

DPC DYNAMIC PERFORMANCE CHUCKS

JIS B 6339 (DIN ISO 7388-2)

FORM AD - CENTRAL COOLANT SUPPLY

Multifunctional precision chuck, especially for finishing and HDC milling
Cylindrical design for less interference contours



• **Chuck body and clamping nut separately balanced**
G_{2,5} at 25.000 1/min or U ≤ 1 gmm

• **Standard:** DPC high accuracy clamping nut **without** collet collapse. Concentricity of ≤ 3 μm with GERC-HP collets.

• **Alternative:** HSS clamping nut **with** 0,4 mm collet collapse. Concentricity of ≤ 10 μm with GERC-B collets. Not suitable for sealed collets.

Description + A	Order-No. incl. DPC clamping nut	Order-No. incl. HSS clamping nut	D = Wrench Ø	E	L1	L2	L3	G
Clamping range Ø 1-10 mm - Collets GERC16								
DPC16-BT40-A=75	62443300755	62443300756	30	100	38	32	25	M11x1
DPC16-BT40-A=90	62443300905	62443300906	30	120	53	32	25	M11x1
DPC16-BT40-A=105	62443301055	62443301056	30	130	68	32	30	M11x1
DPC16-BT40-A=120	62443301205	62443301206	30	150	83	32	30	M11x1
DPC16-BT40-A=150	62443301505	62443301506	30	180	113	32	30	M11x1
DPC16-BT40-A=165	62443301655	62443301656	30	190	127	32	30	M11x1
DPC16-BT40-A=200	62443302005	62443302006	30	220	162	32	30	M11x1
Clamping range Ø 1-13 mm - Collets GERC20								
DPC20-BT40-A=75	62444300755	62444300756	32	95	42	36	20	M14x1
DPC20-BT40-A=90	62444300905	62444300906	32	110	57	36	22	M14x1
DPC20-BT40-A=105	62444301055	62444301056	32	125	72	36	22	M14x1
DPC20-BT40-A=120	62444301205	62444301206	32	135	87	36	22	M14x1
DPC20-BT40-A=150	62444301505	62444301506	32	165	117	36	46	M14x1
DPC20-BT40-A=165	62444301655	62444301656	32	180	132	36	22	M14x1

For other DPC chucks with BT40, see following page.

Suitable Accessories

Collets



Page 138ff

Clamping Nuts



Page 162ff

Wrenches



Page 160

Mounting Devices



Page 161

Adjustable
Stop Screws



Page 165

Pull Studs



Page 167ff

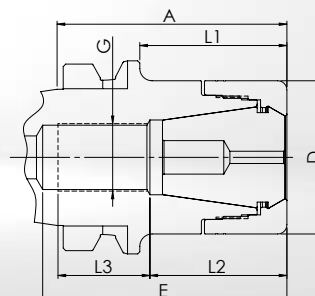
DPC DYNAMIC PERFORMANCE CHUCKS

JIS B 6339 (DIN ISO 7388-2)

FORM AD - CENTRAL COOLANT SUPPLY

BT40
DPC

Multifunctional precision chuck, especially for finishing and HDC milling
Cylindrical design for less interference contours



- **Chuck body and clamping nut separately balanced**
G_{2,5} at 25.000 1/min or U ≤ 1 gmm
- **Standard:** DPC high accuracy clamping nut **without** collet collapse. Concentricity of ≤ 3 μm with GERC-HP collets.
- **Alternative:** HSS clamping nut **with** 0,4 mm collet collapse. Concentricity of ≤ 10 μm with GERC-B collets. Not suitable for sealed collets.

Description + A	Order-No. incl. DPC clamping nut	Order-No. incl. HSS clamping nut	D = Wrench Ø	E	L1	L2	L3	G
Clamping range Ø 1-16 mm - Collets GERC25								
DPC25-BT40-A=60	62445300605	62445300606	40	82	28	42	35	M18x1,5
DPC25-BT40-A=75	62445300755	62445300756	40	90	43	42	35	M18x1,5
DPC25-BT40-A=90	62445300905	62445300906	40	95	58	42	35	M18x1,5
DPC25-BT40-A=105	62445301055	62445301056	40	95	73	42	35	M18x1,5
DPC25-BT40-A=120	62445301205	62445301206	40	100	88	42	35	M18x1,5
DPC25-BT40-A=150	62445301505	62445301506	40	125	118	42	35	M18x1,5
DPC25-BT40-A=165	62445301655	62445301656	40	190	133	42	35	M18x1,5
DPC25-BT40-A=200	62445302005	62445302006	40	220	168	42	35	M18x1,5
Clamping range Ø 2-20 mm - Collets GERC32								
DPC32-BT40-A=60	62446300605	62446300606	50	80	29	45	30	M22x1,5
DPC32-BT40-A=75	62446300755	62446300756	50	98	44	45	45	M22x1,5
DPC32-BT40-A=90	62446300905	62446300906	50	98	59	45	45	M22x1,5
DPC32-BT40-A=105	62446301055	62446301056	50	125	74	45	45	M22x1,5
DPC32-BT40-A=120	62446301205	62446301206	50	110	89	45	45	M22x1,5
DPC32-BT40-A=150	62446301505	62446301506	50	140	119	45	45	M22x1,5
DPC32-BT40-A=165	62446301655	62446301656	50	150	134	45	45	M22x1,5
Clamping range Ø 3-26 mm - Collets GERC40								
DPC40-BT40-A=75	62447300755	---	63	85	48	56	21	M28x1,5
DPC40-BT40-A=105	62447301055	---	63	90	78	56	30	M28x1,5

Suitable Accessories

Collets



Page 146ff

Clamping Nuts



Page 162ff

Wrenches



Page 160

Mounting Devices



Page 161

Adjustable Stop Screws



Page 165

Pull Studs



Page 167ff

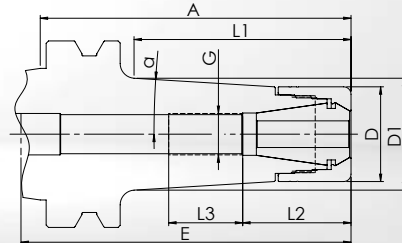
BT40 DPC

DPC DYNAMIC PERFORMANCE CHUCKS

JIS B 6339 (DIN ISO 7388-2)

FORM AD - CENTRAL COOLANT SUPPLY

Stable precision chuck for demanding tasks, especially in HDC milling
Tapered design for better damping and higher stability



• **Chuck body and clamping nut separately balanced**
G_{2,5} at 25.000 1/min or U ≤ 1 gmm

• **Standard:** DPC high accuracy clamping nut **without** collet collapse. Concentricity of ≤ 3 μm with GERC-HP collets.

• **Alternative:** HSS clamping nut **with** 0,4 mm collet collapse. Concentricity of ≤ 10 μm with GERC-B collets. Not suitable for sealed collets.

Description + A	Order-No. incl. DPC clamping nut	Order-No. incl. HSS clamping nut	D = Wrench Ø	E	D1	α	L1	L2	L3	G
Clamping range Ø 1-10 mm - Collets GERC16										
DPC16C-BT40-A=75	62443310755	62443310756	30	80	31,5	4,5°	33,5	32	25	M11x1
DPC16C-BT40-A=105	62443311055	62443311056	30	110	34,5	3,5°	63,5	32	25	M11x1
DPC16C-BT40-A=135	62443311355	62443311356	30	130	36	2,5°	93	32	25	M11x1
Clamping range Ø 1-13 mm - Collets GERC20										
DPC20C-BT40-A=75	62444310755	62444310756	32	80	34	4,5°	38	36	25	M14x1
DPC20C-BT40-A=105	62444311055	62444311056	32	110	37	3,5°	68	36	25	M14x1
DPC20C-BT40-A=135	62444311355	62444311356	32	140	38,5	2,5°	98	36	25	M14x1
Clamping range Ø 1-16 mm - Collets GERC25										
DPC25C-BT40-A=75	62445310755	62445310756	40	90	41,5	4,5°	38	43	35	M18x1,5
DPC25C-BT40-A=105	62445311055	62445311056	40	100	45	3,5°	68	43	35	M18x1,5
DPC25C-BT40-A=135	62445311355	62445311356	40	124	46	2,5°	98	43	35	M18x1,5

Suitable Accessories

Collets



Page 138ff

Clamping Nuts



Page 162ff

Wrenches



Page 160

Mounting Devices



Page 161

Adjustable
Stop Screws



Page 165

Pull Studs



Page 167ff

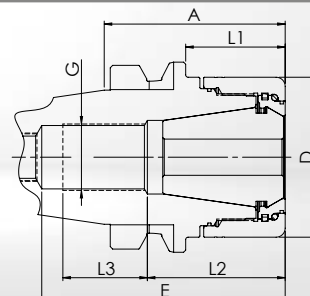
UPC ULTRA POWER CHUCKS

JIS B 6339 (DIN ISO 7388-2)

FORM AD - CENTRAL COOLANT SUPPLY

BT40
UPC

Extremely stiff precision chuck for the most demanding tasks with predominantly radial load
Cylindrical design with a multi-part clamping nut for optimised damping and maximum stability



- **Chuck body and clamping nut separately balanced**
G6,3 at 18.000 1/min
- **Standard:** UPC high accuracy clamping nut **without** collet collapse. Concentricity of $\leq 3 \mu\text{m}$ with GERC-HP collets.

Description + A	Order-No. incl. UPC clamping nut	D = Wrench Ø	E	L1	L2	L3	G
Clamping range Ø 2-20 mm - Collets GERC32							
UPC32-BT40-A=60	66446300605	53	80	32	45	28	M22x1,5
UPC32-BT40-A=90	66446300905	53	85	63	45	28	M22x1,5
Clamping range Ø 3-26 mm - Collets GERC40							
UPC40-BT40-A=60	66447300605	63	84	47	56	21	M28x1,5
UPC40-BT40-A=90	66447300905	63	87	62	56	23	M28x1,5

Note about UPC40: For longer A dimensions A=75 and A=105, see FPC page 96.

Suitable Accessories

Collets



Page 150ff

Clamping Nuts



Page 164

Wrenches



Page 160

Mounting Devices



Page 161

Adjustable
Stop Screws



Page 165

Pull Studs



Page 167ff

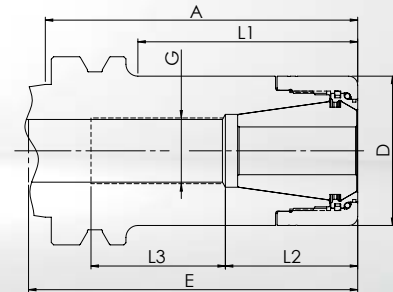
BT40 FPC

FPC FULL PERFORMANCE CHUCKS

JIS B 6339 (DIN ISO 7388-2)

FORM AD - CENTRAL COOLANT SUPPLY

Stable precision chuck, especially for trochoidal milling and other HPC milling strategies
Version with a multi-part clamping nut for optimised damping, especially for axial load



- **Chuck body and clamping nut separately balanced**
G6,3 at 18.000 1/min
- **Standard:** FPC high accuracy clamping nut **without** collet collapse. Concentricity of $\leq 3 \mu\text{m}$ with GERC-HP collets.

Description + A	Order-No. incl. FPC clamping nut	D = Wrench Ø	E	L1	L2	L3	G
Clamping range Ø 2-20 mm - Collets GERC32							
FPC32-BT40-A=60	62446300609	50	80	29	45	30	M22x1,5
FPC32-BT40-A=75	62446300759	50	98	44	45	45	M22x1,5
FPC32-BT40-A=90	62446300909	50	98	59	45	45	M22x1,5
FPC32-BT40-A=105	62446301059	50	125	74	45	45	M22x1,5
FPC32-BT40-A=120	62446301209	50	110	89	45	45	M22x1,5
FPC32-BT40-A=150	62446301509	50	140	119	45	45	M22x1,5
FPC32-BT40-A=165	62446301659	50	150	134	45	45	M22x1,5
Clamping range Ø 3-26 mm - Collets GERC40							
FPC40-BT40-A=75	62447300759	63	85	48	56	21	M28x1,5
FPC40-BT40-A=105	62447301059	63	90	78	56	30	M28x1,5

Suitable Accessories

Collets



Page 150ff

Clamping Nuts



Page 164

Wrenches



Page 160

Mounting Devices



Page 161

Adjustable
Stop Screws



Page 165

Pull Studs



Page 167ff

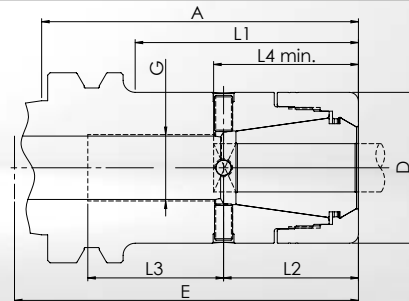
AFC ADJUSTABLE FINISHING CHUCKS

JIS B 6339 (DIN ISO 7388-2)

FORM AD - CENTRAL COOLANT SUPPLY

BT40
AFC

Adjustable precision chuck for reaming and other tasks with maximum concentricity
Design for adjustable concentricity with 4 screws on the circumference



- **Chuck body and clamping nut separately balanced**
G6,3 at 18.000 1/min
- **Standard:** DPC high accuracy clamping nut **without** collet collapse, for collets GERC-HP, adjustable runout, especially for long overhang and reamers.

Clamping diameter	Possible range	L4 min.	Description + A	Order-No. incl. DPC clamping nut	D = Wrench \emptyset	E	L1	L2	L3	G
Collets GERC25										
7-10	7-10	43	AFC25-BT40-A=105	62445305235	40	95	73	42	35	M18x1,5
11-13	10,1-13,5	43	AFC25-BT40-A=105	62445305245	40	95	73	42	35	M18x1,5
14-16	13,51-16	43	AFC25-BT40-A=105	62445305265	40	95	73	42	35	M18x1,5
Collets GERC32										
7-13	7-13,5	47	AFC32-BT40-A=105	62446305245	50	91	78	56	30	M22x1,5
14-20	13,51-20	47	AFC32-BT40-A=105	62446305265	50	91	78	56	30	M22x1,5
Collets GERC40										
7-15	7-15,5	55	AFC40-BT40-A=105	62447305245	63	90	78	56	30	M28x1,5
16-26	15,51-26	55	AFC40-BT40-A=105	62447305265	63	90	78	56	30	M28x1,5

Please note the minimum clamping length L4 required for the function and that the chuck is only approved for the respective clamping \emptyset . Other versions and clamping \emptyset can be offered after technical examination.

Suitable Accessories

Collets



Page 146ff

Clamping Nuts



Page 162

Wrenches



Page 160

Mounting Devices



Page 161

Adjustable Stop Screws



Page 165

Pull Studs



Page 167ff

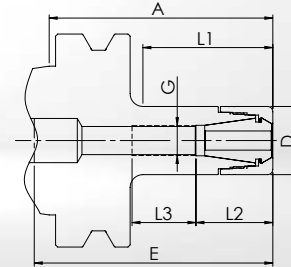
BT50 DPC

DPC DYNAMIC PERFORMANCE CHUCKS

JIS B 6339 (DIN ISO 7388-2)

FORM AD - CENTRAL COOLANT SUPPLY

Multifunctional precision chuck, especially for finishing and HDC milling
Cylindrical design for less interference contours



- **Chuck body and clamping nut separately balanced**
G_{2,5} at 25.000 1/min
- **Standard:** DPC high accuracy clamping nut **without** collet collapse. Concentricity of $\leq 3 \mu\text{m}$ with GERC-HP collets.
- **Alternative:** HSS clamping nut **with** 0,4 mm collet collapse. Concentricity of $\leq 10 \mu\text{m}$ with GERC-B collets. Not suitable for sealed collets.

Description + A	Order-No. incl. DPC clamping nut	Order-No. incl. HSS clamping nut	D = Wrench Ø	E	L1	L2	L3	G
Clamping range Ø 1-10 mm - Collets GERC16								
DPC16-BT50-A=105	62463301055	62463301056	30	150	55	31	24	M11x1
DPC16-BT50-A=135	62463301355	62463301356	30	180	85	31	24	M11x1
DPC16-BT50-A=165	62463301655	62463301656	30	200	115	31	41	M11x1
Clamping range Ø 1-13 mm - Collets GERC20								
DPC20-BT50-A=105	62464301055	62464301056	32	140	61	36	46	M14x1
DPC20-BT50-A=135	62464301355	62464301356	32	170	91	36	46	M14x1
DPC20-BT50-A=165	62464301655	62464301656	32	200	121	36	46	M14x1
Clamping range Ø 1-16 mm - Collets GERC25								
DPC25-BT50-A=105	62465301055	62465301056	40	150	59	42	36	M18x1,5
DPC25-BT50-A=135	62465301355	62465301356	40	180	89	42	36	M18x1,5
DPC25-BT50-A=165	62465301655	62465301656	40	210	122	42	36	M18x1,5

For other DPC chucks with BT50, see following page.

Suitable Accessories

Collets



Page 138ff

Clamping Nuts



Page 162ff

Wrenches



Page 160

Mounting Devices



Page 161

Adjustable
Stop Screws



Page 165

Pull Studs



Page 167ff

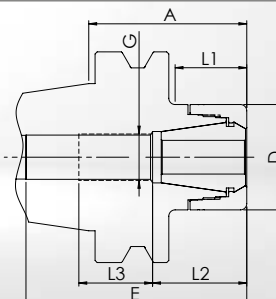
DPC DYNAMIC PERFORMANCE CHUCKS

JIS B 6339 (DIN ISO 7388-2)

FORM AD - CENTRAL COOLANT SUPPLY

BT50
DPC

Multifunctional precision chuck, especially for finishing and HDC milling
Cylindrical design for less interference contours



• **Chuck body and clamping nut separately balanced**
G2,5 at 25.000 1/min

• **Standard:** DPC high accuracy clamping nut **without** collet collapse. Concentricity of $\leq 3 \mu\text{m}$ with GERC-HP collets.

• **Alternative:** HSS clamping nut **with** 0,4 mm collet collapse. Concentricity of $\leq 10 \mu\text{m}$ with GERC-B collets. Not suitable for sealed collets.

Description + A	Order-No. incl. DPC clamping nut	Order-No. incl. HSS clamping nut	D = Wrench \varnothing	E	L1	L2	L3	G
Clamping range \varnothing 2-20 mm - Collets GERC32								
DPC32-BT50-A=75	62466300755	62466300756	50	120	34	45	35	M22x1,5
DPC32-BT50-A=105	62466301055	62466301056	50	150	64	45	35	M22x1,5
DPC32-BT50-A=135	62466301355	62466301356	50	180	94	45	35	M22x1,5
DPC32-BT50-A=165	62466301655	62466301656	50	210	124	45	40	M22x1,5
Clamping range \varnothing 3-26 mm - Collets GERC40								
DPC40-BT50-A=75	62467300755	---	63	90	32	56	30	M28x1,5
DPC40-BT50-A=105	62467301055	---	63	90	62	56	30	M28x1,5
DPC40-BT50-A=135	62467301355	---	63	90	93	56	35	M28x1,5
DPC40-BT50-A=165	62467301655	---	63	90	123	56	35	M28x1,5

BT

Suitable Accessories

Collets



Page 150ff

Clamping Nuts



Page 162ff

Wrenches



Page 160

Mounting Devices



Page 161

Adjustable
Stop Screws



Page 165

Pull Studs



Page 167ff

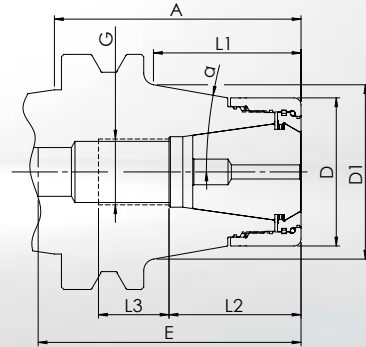
BT50 UPC

UPC ULTRA POWER CHUCKS

JIS B 6339 (DIN ISO 7388-2)

FORM AD - CENTRAL COOLANT SUPPLY

Extremely stiff precision chuck for the most demanding tasks with predominantly radial load
Tapered design with a multi-part clamping nut for optimised damping and maximum stability



- **Chuck body and clamping nut separately balanced**
G6,3 at 18.000 1/min
- **Standard:** UPC high accuracy clamping nut **without** collet collapse. Concentricity of $\leq 3 \mu\text{m}$ with GERC-HP collets.

Description + A	Order-No. incl. UPC clamping nut	D = Wrench \emptyset	E	D1	α	L1	L2	L3	G
Clamping range \emptyset 2-20 mm - Collets GERC32									
UPC32C-BT50-A=75	66466310755	53	114	55	10°	33	45	45	M22x1,5
UPC32C-BT50-A=105	66466311055	53	140	65	10°	62	45	45	M22x1,5
Clamping range \emptyset 3-26 mm - Collets GERC40									
UPC40C-BT50-A=75	66467310755	63	95	64	10°	32,5	56	30	M28x1,5
UPC40C-BT50-A=105	66467311055	63	95	74,5	10°	62	56	30	M28x1,5

Note about UPC40: For longer A dimensions in cylindrical form A=130 and A=160, see FPC page 101.

Suitable Accessories

Collets



Page 150ff

Clamping Nuts



Page 164

Wrenches



Page 160

Mounting Devices



Page 161

Adjustable
Stop Screws



Page 165

Pull Studs



Page 167ff

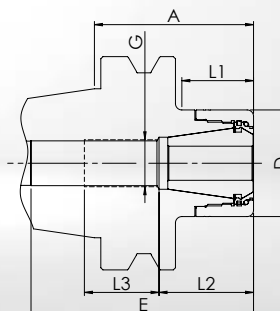
FPC FULL PERFORMANCE CHUCKS

JIS B 6339 (DIN ISO 7388-2)

FORM AD - CENTRAL COOLANT SUPPLY

BT50
FPC

Stable precision chuck, especially for trochoidal milling and other HPC milling strategies
Version with a multi-part clamping nut for optimised damping, especially for axial load



- **Chuck body and clamping nut separately balanced**
G6,3 at 18.000 1/min
- **Standard:** FPC high accuracy clamping nut **without** collet collapse. Concentricity of $\leq 3 \mu\text{m}$ with GERC-HP collets.

Description + A	Order-No. incl. FPC clamping nut	D = Wrench Ø	E	L1	L2	L3	G
Clamping range Ø 2-20 mm - Collets GERC32							
FPC32-BT50-A=75	62466300759	50	120	34	45	35	M22x1,5
FPC32-BT50-A=105	62466301059	50	150	64	45	35	M22x1,5
FPC32-BT50-A=135	62466301359	50	180	94	45	35	M22x1,5
FPC32-BT50-A=165	62466301659	50	210	124	45	40	M22x1,5
Clamping range Ø 3-26 mm - Collets GERC40							
FPC40-BT50-A=75	62467300759	63	90	32	56	30	M28x1,5
FPC40-BT50-A=105	62467301059	63	90	62	56	30	M28x1,5
FPC40-BT50-A=135	62467301359	63	90	93	56	35	M28x1,5
FPC40-BT50-A=165	62467301659	63	90	123	56	35	M28x1,5

Suitable Accessories

Collets



Page 150ff

Clamping Nuts



Page 164

Wrenches



Page 160

Mounting Devices



Page 161

Adjustable
Stop Screws



Page 165

Pull Studs



Page 167ff

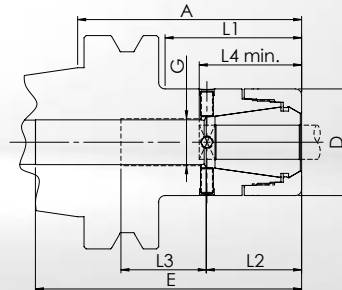
BT50 AFC

AFC ADJUSTABLE FINISHING CHUCKS

JIS B 6339 (DIN ISO 7388-2)

FORM AD - CENTRAL COOLANT SUPPLY

Adjustable precision chuck for reaming and other tasks with maximum concentricity
Design for adjustable concentricity with 4 screws on the circumference



- **Chuck body and clamping nut separately balanced**
G6,3 at 18.000 1/min
- **Standard:** DPC high accuracy clamping nut **without** collet collapse, for collets GERC-HP, adjustable runout, especially for long overhang and reamers.

Clamping diameter	Possible range	L4 min.	Description + A	Order-No. incl. DPC clamping nut	D = Wrench Ø	E	L1	L2	L3	G
Collets GERC25										
7-10	7-10	43	AFC25-BT50-A=105	62465305235	40	150	59	42	36	M18x1,5
11-13	10,1-13,5	43	AFC25-BT50-A=105	62465305245	40	150	59	42	36	M18x1,5
14-16	13,51-16	43	AFC25-BT50-A=105	62465305265	40	150	59	42	36	M18x1,5
Collets GERC32										
7-13	7-13,5	47	AFC32-BT50-A=105	62466305245	50	150	64	45	35	M22x1,5
14-20	13,51-20	47	AFC32-BT50-A=105	62466305265	50	150	64	45	35	M22x1,5
Collets GERC40										
7-15	7-15,5	55	AFC40-BT50-A=105	62467305245	63	90	62	56	30	M28x1,5
16-26	15,51-26	55	AFC40-BT50-A=105	62467305265	63	90	62	56	30	M28x1,5

Please note the minimum clamping length L4 required for the function and that the chuck is only approved for the respective clamping Ø. Other versions and clamping Ø can be offered after technical examination.

Suitable Accessories

Collets



Page 146ff

Clamping Nuts



Page 162

Wrenches



Page 160

Mounting Devices



Page 161

Adjustable Stop Screws



Page 165

Pull Studs



Page 167ff