

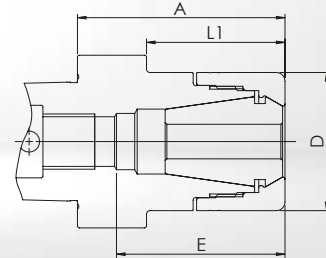
PSC50 DPC

DPC DYNAMIC PERFORMANCE CHUCKS

ISO 26623-1

FORM AD - CENTRAL COOLANT SUPPLY

Multifunctional precision chuck, especially for finishing and HDC milling
Cylindrical design for less interference contours



- **Chuck body and clamping nut separately balanced**
G_{2,5} at 25.000 1/min or U ≤ 1 gmm

- **Standard:** DPC high accuracy clamping nut **without** collet collapse. Concentricity of ≤ 3 μm with GERC-HP collets.

- **Alternative:** HSS clamping nut **with** 0,4 mm collet collapse. Concentricity of ≤ 10 μm with GERC-B collets. Not suitable for sealed collets.

Description + A	Order-No. incl. DPC clamping nut	Order-No. incl. HSS clamping nut	D = Wrench Ø	E	L1	L2	L3	G
Clamping range Ø 1-10 mm - Collets GERC16								
DPC16-C5-A=60	62853300605	62853300606	30	46	39	32	13	M11x1
DPC16-C5-A=100	62853301005	62853301006	30	86	79	32	30	M11x1
Clamping range Ø 1-16 mm - Collets GERC25								
DPC25-C5-A=60	62855300605	62855300606	40	49	39	---	---	---
Clamping range Ø 2-20 mm - Collets GERC32								
DPC32-C5-A=60	62856300605	62856300606	50	50	27,5	---	---	---

PSC

Suitable Accessories

Collets



Page 138ff

Clamping Nuts



Page 162ff

Wrenches



Page 160

Mounting Devices



Page 161

Adjustable
Stop Screws



Page 167

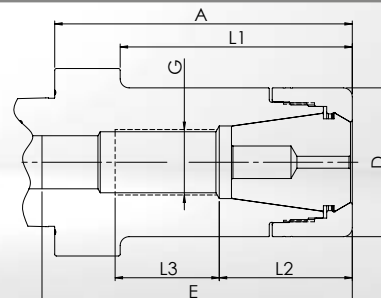
DPC DYNAMIC PERFORMANCE CHUCKS

ISO 26623-1

FORM AD - CENTRAL COOLANT SUPPLY

PSC63
DPC

Multifunctional precision chuck, especially for finishing and HDC milling
Cylindrical design for less interference contours



• **Chuck body and clamping nut separately balanced**
G_{2,5} at 25.000 1/min or U ≤ 1 gmm

• **Standard:** DPC high accuracy clamping nut **without** collet collapse. Concentricity of ≤ 3 μm with GERC-HP collets.

• **Alternative:** HSS clamping nut **with** 0,4 mm collet collapse. Concentricity of ≤ 10 μm with GERC-B collets. Not suitable for sealed collets.

Description + A	Order-No. incl. DPC clamping nut	Order-No. incl. HSS clam- ping nut	D = Wrench Ø	E	L1	L2	L3	G
Clamping range Ø 1-10 mm - Collets GERC16								
DPC16-C6-A=60	62863300605	62863300606	30	56	33	---	---	---
DPC16-C6-A=100	62863301005	62863301006	30	90	73	32	30	M11x1
Clamping range Ø 1-13 mm - Collets GERC20								
DPC20-C6-A=60	62864300605	62864300606	32	56	37	---	---	---
DPC20-C6-A=100	62864301005	62864301006	32	80	77	36	35	M14x1
Clamping range Ø 1-16 mm - Collets GERC25								
DPC25-C6-A=60	62865300605	62865300606	40	56	35	---	---	---
DPC25-C6-A=100	62865301005	62865301006	40	83	75	43	35	M18x1,5
DPC25-C6-A=130	62865301305	62865301306	40	125	105	43	35	M18x1,5
DPC25-C6-A=160	62865301605	62865301606	40	140	135	43	35	M18x1,5
Clamping range Ø 2-20 mm - Collets GERC32								
DPC32-C6-A=60	62866300605	62866300606	50	56	35	---	---	---
DPC32-C6-A=100	62866301005	62866301006	50	84	75	44	35	M22x1,5
DPC32-C6-A=130	62866301305	62866301306	50	98	104	44	30	M22x1,5
Clamping range Ø 3-26 mm - Collets GERC40								
DPC40-C6-A=65	62867300655	---	63	57	42	---	---	---
DPC40-C6-A=100	62867301005	---	63	87	77	54	25	M28x1,5

PSC

Suitable Accessories

Collets



Page 138ff

Clamping Nuts



Page 162ff

Wrenches



Page 160

Mounting Devices



Page 161

Adjustable
Stop Screws



Page 165

PSC63

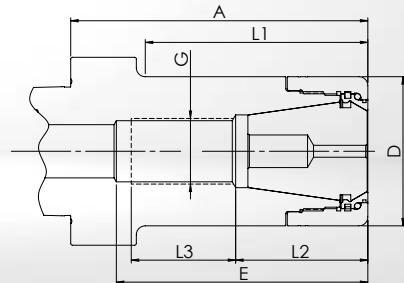
FPC

FPC FULL PERFORMANCE CHUCKS

ISO 26623-1

FORM AD - CENTRAL COOLANT SUPPLY

Stable precision chuck, especially for trochoidal milling and other HPC milling strategies
Version with a multi-part clamping nut for optimised damping, especially for axial load



- **Chuck body and clamping nut separately balanced**
G6,3 at 18.000 1/min
- **Standard:** FPC high accuracy clamping nut **without** collet collapse. Concentricity of $\leq 3 \mu\text{m}$ with GERC-HP collets.

Description + A	Order-No. incl. FPC clamping nut	D = Wrench Ø	E	L1	L2	L3	G
Clamping range Ø 2-20 mm - Collets GERC32							
FPC32-C6-A=60	62866300609	50	56	35	---	---	---
FPC32-C6-A=100	62866301009	50	84	75	44	35	M22x1,5
FPC32-C6-A=130	62866301309	50	98	104	44	30	M22x1,5
Clamping range Ø 3-26 mm - Collets GERC40							
FPC40-C6-A=65	62867300659	63	57	42	---	---	---
FPC40-C6-A=100	62867301009	63	87	77	54	25	M28x1,5

PSC

Suitable Accessories

Collets



Page 150ff

Clamping Nuts



Page 164

Wrenches



Page 160

Mounting Devices



Page 161

Adjustable
Stop Screws



Page 165

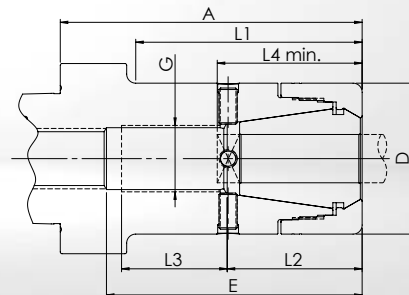
AFC ADJUSTABLE FINISHING CHUCKS

ISO 26623-1

FORM AD - CENTRAL COOLANT SUPPLY

PSC63
AFC

Adjustable precision chuck for reaming and other tasks with maximum concentricity
Design for adjustable concentricity with 4 screws on the circumference



- **Chuck body and clamping nut separately balanced**
G6,3 at 18.000 1/min
- **Standard:** DPC high accuracy clamping nut **without** collet collapse, for collets GERC-HP, adjustable runout, especially for long overhang and reamers.

Clamping diameter	Possible range	L4 min.	Description + A	Order-No. incl. DPC clamping nut	D = Wrench \emptyset	E	L1	L2	L3	G
Collets GERC25										
7-10	7-10	43	AFC25-C6-A=100	62865305235	40	83	75	43	35	M18x1,5
10,5-13,5	10,1-13,5	43	AFC25-C6-A=100	62865305245	40	83	75	43	35	M18x1,5
14-16	13,51-16	43	AFC25-C6-A=100	62865305265	40	83	75	43	35	M18x1,5
Collets GERC32										
7-13	7-13,5	47	AFC32-C6-A=100	62866305245	50	84	75	44	35	M22x1,5
14-20	13,51-20	47	AFC32-C6-A=100	62866305265	50	84	75	44	35	M22x1,5
Collets GERC40										
7-15	7-15,5	55	AFC40-C6-A=100	62867305245	63	87	77	54	25	M28x1,5
16-26	15,51-26	55	AFC40-C6-A=100	62867305265	63	87	77	54	25	M28x1,5

Please note the minimum clamping length L4 required for the function and that the chuck is only approved for the respective clamping \emptyset . Other versions and clamping \emptyset can be offered after technical examination.

Suitable Accessories

Collets



Page 146ff

Clamping Nuts



Page 162

Wrenches



Page 160

Mounting Devices



Page 161

Adjustable Stop Screws



Page 165

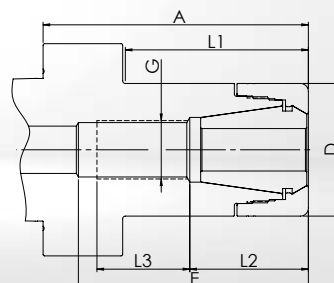
PSC80 DPC

DPC DYNAMIC PERFORMANCE CHUCKS

ISO 26623-1

FORM AD - CENTRAL COOLANT SUPPLY

Multifunctional precision chuck, especially for finishing and HDC milling
Cylindrical design for less interference contours



- **Chuck body and clamping nut separately balanced**
G_{2,5} at 25.000 1/min or U ≤ 1 gmm

- **Standard:** DPC high accuracy clamping nut **without** collet collapse. Concentricity of ≤ 3 μm with GERC-HP collets.

- **Alternative:** HSS clamping nut **with** 0,4 mm collet collapse. Concentricity of ≤ 10 μm with GERC-B collets. Not suitable for sealed collets.

Description + A	Order-No. incl. DPC clamping nut	Order-No. incl. HSS clamping nut	D = Wrench Ø	E	L1	L2	L3	G
Clamping range Ø 1-16 mm - Collets GERC25								
DPC25-C8-A=100	62885301005	62885301006	40	90	67	43	30	M18x1,5
Clamping range Ø 2-20 mm - Collets GERC32								
DPC32-C8-A=100	62886301005	62886301006	50	87	69	45	35	M22x1,5

PSC

Suitable Accessories

Collets



Page 146ff

Clamping Nuts



Page 162ff

Wrenches



Page 160

Mounting Devices



Page 161

Adjustable
Stop Screws



Page 165

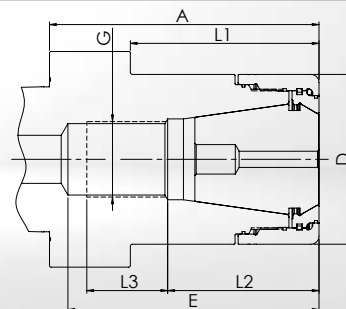
UPC ULTRA POWER CHUCKS

ISO 26623-1

FORM AD - CENTRAL COOLANT SUPPLY

PSC80
UPC

Extremely stiff precision chuck for the most demanding tasks with predominantly radial load
Cylindrical design with a multi-part clamping nut for optimised damping and maximum stability



- **Chuck body and clamping nut separately balanced**
G6,3 at 18.000 1/min
- **Standard:** UPC high accuracy clamping nut **without** collet collapse. Concentricity of $\leq 3 \mu\text{m}$ with GERC-HP collets.

Description + A	Order-No. incl. UPC clamping nut	D = Wrench Ø	E	L1	L2	L3	G
Clamping range Ø 2-20 mm - Collets GERC32							
UPC32-C8-A=100	66886301005	53	85	70	45	35	M22x1,5
Clamping range Ø 3-26 mm - Collets GERC40							
UPC40-C8-A=100	66887301005	63	93	70	56	30	M28x1,5

PSC

Suitable Accessories

Collets



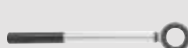
Page 150ff

Clamping Nuts



Page 164

Wrenches



Page 160

Mounting Devices



Page 161

Adjustable
Stop Screws



Page 165

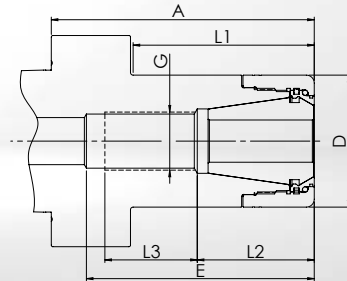
PSC80 FPC

FPC FULL PERFORMANCE CHUCKS

ISO 26623-1

FORM AD - CENTRAL COOLANT SUPPLY

Stable precision chuck, especially for trochoidal milling and other HPC milling strategies
Version with a multi-part clamping nut for optimised damping, especially for axial load



- **Chuck body and clamping nut separately balanced**
G6,3 at 18.000 1/min
- **Standard:** FPC high accuracy clamping nut **without** collet collapse. Concentricity of $\leq 3 \mu\text{m}$ with GERC-HP collets.

Description + A	Order-No. incl. FPC clamping nut	D = Wrench \varnothing	E	L1	L2	L3	G
Clamping range \varnothing 2-20 mm - Collets GERC32							
FPC32-C8-A=100	62886301009	50	87	69	45	35	M22x1,5

PSC

Suitable Accessories

Collets



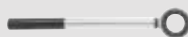
Page 150ff

Clamping Nuts



Page 164

Wrenches



Page 160

Mounting Devices



Page 161

Adjustable
Stop Screws



Page 165