


21675 Blade head supports with KKB

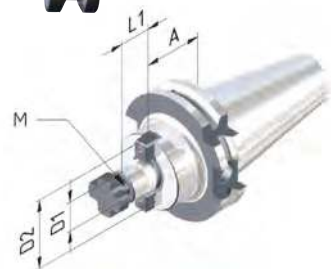
ISO 7388-1 DIN 69871 AD/AF  G 2.5 25000 1/min $\leq 6\mu\text{m}$ HPC

Design

- Ground taper shank, mounting spigot and contact surface
- Hard-turned shank
- Balluf chip bore
- With two coolant channel bores (= KKB)

Scope of delivery:

Cutter retaining screw.



Taper SK	D1 mm	A mm	D2 mm	L1 mm	M	21675	...
40	16	35	38	17	M 8		101
40	22	35	48	19	M 10		102
40	27	35	60	21	M 12		103
40	32	50	78	24	M 16		104

21683 Boring bar blanks

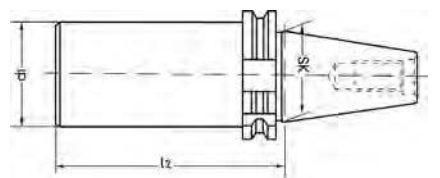
ISO 7388-1 DIN 69871

Design

- Steep taper and collar hardened and ground
- **Material: 16 MnCr5**
- Balluf chip bore

Applications

For producing special tools.



Taper SK	Boring bar $\varnothing d_1$ mm	l_2 mm	21683	...
40	63.0	250		102
50	97.0	315		201

Info Tool holders according to ISO 7388-2 (MAS-BT)

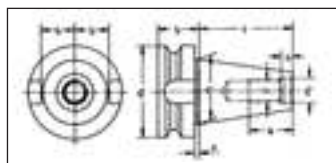
ISO 7388-2 (formerly MAS-BT) version
Alloyed case hardening steel min. tensile strength 950 N/mm².
Taper angle tolerance more accurate than AT3.
Case-hardened 60-2 HRC.
Functional surfaces ground.

New standard ISO 7388-2

- Shape J:** without through hole
- Shape JD:** with through hole for central coolant supply
- Shape JD/JF:** with through hole and side coolant supply via the tool collar
- Shape JF:** with side coolant supply via the tool collar

Old standard DIN 69871 Part 1

- Shape A:** without through hole
- Shape AD:** with through hole for central coolant supply
- Shape AD/B:** with through hole for central coolant supply and 2 holes on the tool collar for side coolant supply
- Shape B:** with 2 holes on the tool collar for side coolant supply



MAS-BT	d1 mm	g	d5 H7 mm	d2 mm	a mm	l1 mm	l2 mm	l3 mm	l5 mm	l6 mm
30	31.75	M 12	12.5	46	2	48.4	22	16.3	7.0	24
40	44.45	M 16	17.0	63	2	65.4	27	22.6	8.2	32
50	69.85	M 24	25.0	100	3	101.8	38	35.3	11.0	47

21192 CNC short drill chuck

ISO 7388-2 MAS-BT/ JIS B 6339 J G 6.3 12000 1/min $\leq 30\mu\text{m}$



Design

- Short model
- Wear parts hardened and ground

Scope of delivery:

Includes spanner with T-handle for high traction.

Applications

For clockwise/anti-clockwise rotation.

Note:

For pull studs, see art. no. 21737-21739.



Taper MAS-BT	Clamping range mm	A mm	D mm	21192	...
40	1-16	88	50		101



21207

Precision short drill chuck

ISO
7388-2MAS-BT/
JIS B 6339

J

≤30µm



Design

- Short, robust and slim design
- Gear ratio generates high gripping forces
- High precision and concentricity

Scope of delivery:

Includes spanner with T-handle for high traction.

Applications

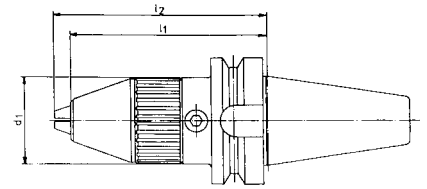
For clockwise/anti-clockwise rotation.

Note:

For pull studs, see art. no. 21737–21739.



21207



Taper MAS-BT	With drill chuck mm	l ₁ mm	d ₁ mm	l ₂ mm	21207	...
40	1.0–13	95.5	43	103.5		101
40	2.5–16	114.5	56	119.5		102
50	1.0–13	106.5	43	114.5		103
50	2.5–16	125.5	56	130.5		104

21458

Quick-change tapping chuck

ISO
7388-2MAS-BT/
JIS B 6339

J



Design

- With length compensation under compression and tension

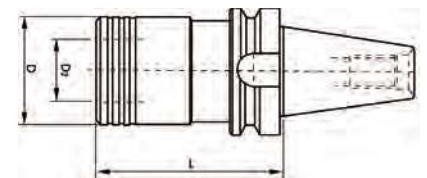
Note:

For quick-change inserts, see art. no. 21459–21460.

For pull studs, see art. no. 21737–21739.



21458



Taper MAS-BT	For screw drill	Suitable inserts/size	Length compensation pressure/tension mm	L mm	D mm	D ₂ mm	21458	...
40	M 3–M 12	1	9.0/9.0	68	38	19		101
40	M 6–M 20	2	15.0/15.0	93	55	31		102
40	M 14–M 33	3	24.0/24.0	138	79	48		103
50	M 6–M 20	2	15.0/15.0	102	55	31		105

21514

ER collet chuck

ISO
7388-2MAS-BT/
JIS B 6339

JD

G 2.5
25000
1/min

≤3µm



Design

- Precision design
- High concentricity

Applications

For clamping tools with straight shanks in collet chucks in accordance with DIN 6499, shape A and B.

Note:

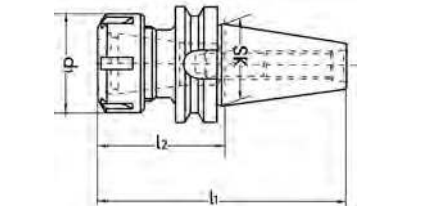
For collet chuck sets, see art. no. 21519.

For collet chucks, see art. no. 21520–21525 and 21534–21539.

For pull studs, see art. no. 21737–21739.



21514



Taper MAS-BT	Clamping range mm	Size	Collet chucks type	l ₂ mm	l ₁ mm	d ₁ mm	21514	...
40	1–16	ER 25	ER 25/430 E	60	125.4	42		101
40	2–20	ER 32	ER 32/470 E	70	135.4	50		102
40	3–26	ER 40	ER 40/472 E	80	145.4	63		103
50	2–20	ER 32	ER 32/470 E	70	171.8	50		104
50	3–26	ER 40	ER 40/472 E	80	181.8	63		105

21545

OZ collet chucks

ISO
7388-2MAS-BT/
JIS B 6339

JD

G 2.5
25000
1/min

≤3µm



Design

- Precision design
- Ball-bearing union nut

Scope of delivery:

Includes clamping nut.

Applications

For clamping tools with straight shanks in collet chucks in line with DIN 6388.

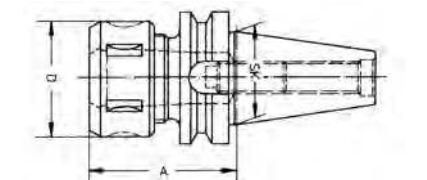
Note:

For collet chucks, see art. no. 21552–21554.

For pull studs, see art. no. 21737–21739.



21545



Taper MAS-BT	Clamping range mm	For collet chucks type	A mm	D mm	21545	...
40	2–25	462 E	70	60		101
40	4–32	467 E	90	72		102

21602

Tool chucks for drill chucks

ISO 7388-2

MAS-BT/ JIS B 6339

J

G 2.5 25000 1/min

≤ 5 μm



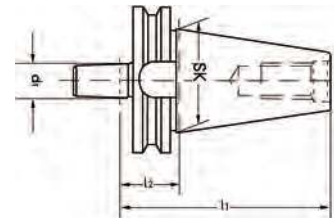
Design
- Precision design

Note:
For pull studs, see art. no. 21737–21739.

Applications
For mounting drill chucks on milling machines.



21602



Taper MAS-BT	Mount d ₁ DIN 238	l ₂ mm	l ₁ mm	21602	...
40	B 16	34	97.4		401

21611

Taper sleeves

ISO 7388-2

MAS-BT/ JIS B 6339

JD

G 6.3 15000 1/min

≤ 5 μm



Design
- Precision design

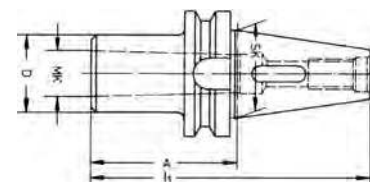
Applications
For mounting tools with MK shanks and flat tangs.

Note:
For pull studs, see art. no. 21737–21739.

Outer taper MAS-BT	Inner taper MK	A mm	l ₁ mm	D mm	21611	...
40	1	50	115.4	25		101
40	2	50	115.4	32		102
40	3	70	135.4	40		103
40	4	95	160.4	48		104
50	2	60	161.8	32		106
50	3	65	166.8	40		107
50	4	95	196.8	48		108



21611



21633

Milling cutter holders

ISO 7388-2

MAS-BT/ JIS B 6339

JD

G 2.5 25000 1/min

≤ 3 μm



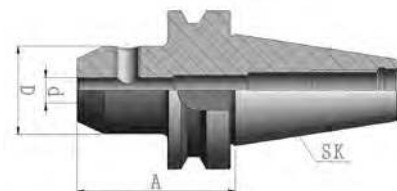
Design
- Precision design
- Bore tolerance < 0.004 mm

Note:
For pull studs, see art. no. 21737–21739.

Applications
For clamping tools with side driving surfaces in accordance with DIN 1835 B and DIN 6535 HB.



21633



Taper MAS-BT	For milling shank Ø d mm	A mm	D mm	21633	...
40	6	50	25		111
40	8	50	28		112
40	10	63	35		113
40	12	63	42		114
40	14	63	44		115
40	16	63	48		116
40	18	63	50		117
40	20	63	52		118
40	25	90	63		120
40	32	100	72		121

Taper MAS-BT	For milling shank Ø d mm	A mm	D mm	21633	...
50	6	63	25		211
50	8	63	28		212
50	10	63	35		213
50	12	80	42		214
50	14	80	44		215
50	16	80	48		216
50	18	80	50		217
50	20	80	52		218
50	25	100	63		220
50	32	105	72		221
50	40	110	80		222

21651

Combination mill arbors

ISO 7388-2 MAS-BT/ JIS B 6339 JD G 2.5 25000 1/min $\leq 6\mu m$



Design

- Precision design
- Face-ground contact surfaces (accuracy < 0.003 mm)

Scope of delivery:

Including key, driver ring and retaining screws.

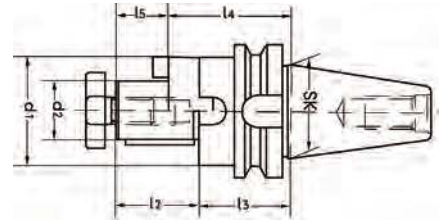
Applications

With key for cutters with longitudinal grooves such as DIN 841, and driver ring for cutters with lateral groove DIN 1880 and blade heads DIN 1830.

Note:

For pull studs, see art. no. 21737–21739. For driving rings, see art. no. 21655. For retaining screws, see art. no. 21656 and 21659. Retaining screw no. 21657.

21651



Taper MAS-BT	d ₂ mm	l ₄ mm	l ₃ mm	d ₁ mm	l ₅ mm	l ₂ mm	21651	...
40	16	55	45	32	17	27		302
40	22	55	43	40	19	31		303
40	27	55	43	48	21	33		304
40	32	60	46	58	24	38		305
40	40	60	46	70	27	41		306
50	22	70	58	40	19	31		403
50	27	70	58	48	21	33		404
50	32	70	56	58	24	38		405
50	40	70	56	70	27	41		406

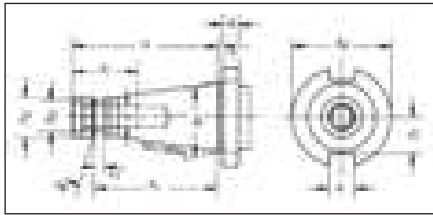
Info

Tool holders according to DIN 2080

Steep taper shafts SK 30 - SK 50 with female thread
Manual clamping and ring groove for automatic clamping DIN 2080.

Version

Alloyed case hardening steel min. tensile strength 950 N/mm².
Taper angle tolerance more accurate than AT3.
Case-hardened 60-2 HRC.
Functional surfaces ground.



SK	d1 mm	a mm	b mm	k mm	g	d2 mm	d3 mm	d4 mm	l1 mm	l2 mm	l3 mm	l4 mm	l5 mm
30	31.75	1.6	16.1	8	M 12	50.0	-	17.1	68.4	16.2	-	-	24
40	44.45	1.6	16.1	10	M 16	63.0	21.1	25.0	93.4	22.5	7	82	32
50	69.85	3.2	25.7	12	M 24	97.5	32.0	39.3	126.8	35.3	13	115	47

21184

Short drill chuck AKL 1–16 mm

DIN 2080 Vorgew. 7000 1/min $\leq 30\mu m$

ALBRECHT

Präzisions Spannfutter

Design

- 100% concentricity checked, based on DIN ISO 10888
- Worm gear for high retention forces

Scope of delivery:

Includes spanner with T-handle for high traction.

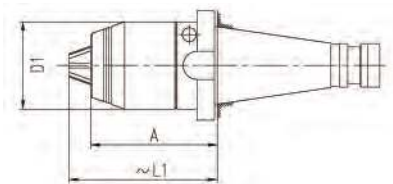
Applications

Suitable for clockwise/anti-clockwise rotation and fast-braking spindles.

Note:

Other balancing grades available on request.

21184



Taper SK	Clamping range mm	A mm	D1 mm	L1 mm	21184	...
40	1-16	73	50	85		301