

## 27610

## Adjustable optical squares

## Design

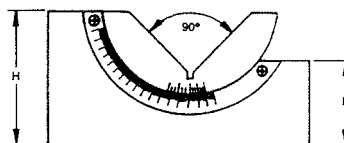
Accuracy  $\pm 0.1$  mm,  
angle accuracy  $\pm 10$  min.

## Applications

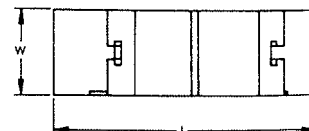
Universal use for grinding, drilling, measuring and marking off. The prism is clamped in a vice. The desired angle is set and locked with a locking screw.

## Quality

Alloyed tool steel, hardened to HRC 55.



27610



Length mm	W mm	H mm	h mm	Weight approx. g	27610	...
75	25	33	23	380		101
102	30	46	29	850		102

## 27617

## Precision clamps

## Design

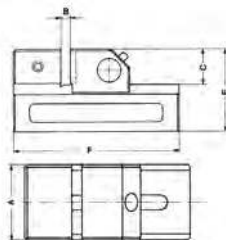
Surface **precision-ground**.  
Perpendicularity: 0.005/100 mm.  
Parallelism: 0.005/100 mm.

## Applications

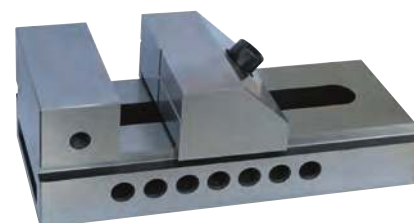
For precise clamping on NC machines during grinding, eroding, measuring and milling work.

## Quality

Tool steel, hardened, HRC 58.



27617



Clamping width B mm	A mm	C mm	E mm	F mm	Weight approx. kg	27617	...
65	50	25	50	140	1.4		101
100	73	35	67	190	4.1		102
125	100	45	90	245	7.3		103

## 27620

## Grinding and control vices

## Design

Surface **precision-ground**. The **precision-angled design** allows the machining of workpieces from 4 sides.

Perpendicularity: 0.002/100 mm.  
Parallelism: 0.002/100 mm.

## Applications

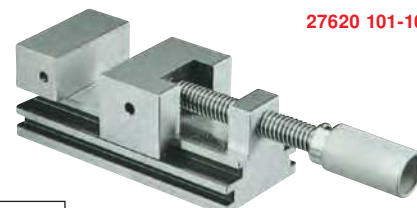
For highly accurate machining of workpieces—grinding, drilling, milling, measuring—on all precision machines.

## Quality

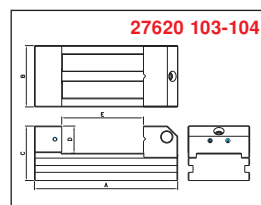
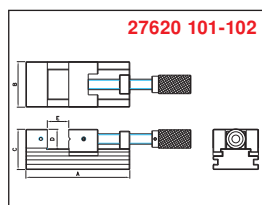
Tool steel, hardened, HRC 60.

## 27620 103-104

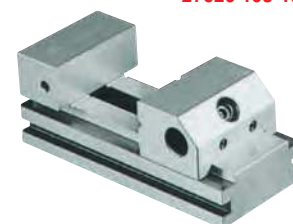
**With quick adjustment** (no spindle). The movable jaw is pushed towards the workpiece on the V-guide and clamped by a screw.



27620 101-102



27620 103-104



27620 101-102  
With threaded spindle.

Clamping width E mm	A mm	B mm	C mm	D mm	Weight kg	27620	...
0-35	90	60	50	25	1.6		101
0-80	160	70	62	30	4.3		102
0-80	160	70	62	30	3.3		103
0-120	210	90	80	40	8.3		104

## 27622

## Sine bar vice

## Design

Surface **precision-ground**.  
Perpendicularity: 0.005/100 mm.  
Parallelism: 0.005/100 mm.

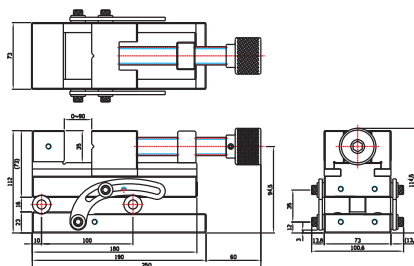
Axis distance: 100 mm.

## Applications

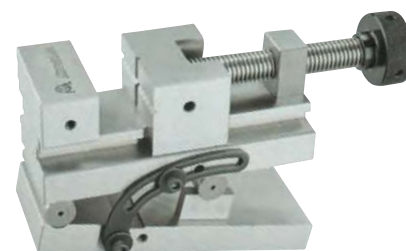
For highly accurate machining of workpieces—grinding, drilling, milling, measuring—on all precision machines. For precise clamping; can be pivoted around the transverse axis.

## Quality

Tool steel, hardened, HRC 58.



27622



Clamping width mm	Length mm	Width mm	Height mm	Weight kg	27622	...
0-90	190	73	112	10		101