

27625 - 27627

Machine vices

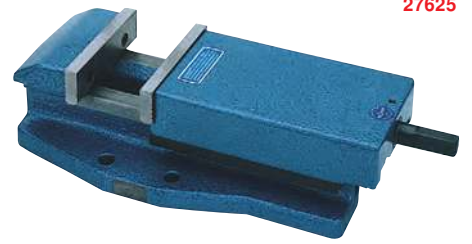


27625
Design

Made of special cast iron, top pressure clamp, long flat track guide for the movable jaw, turned spindle, clamping jaws reversible, smooth and grooved.

27627
Standard turntable
Design

With ground support edge for additional support of the vice (for art. no. 27625 105 with additional clamping slots).



27625



27627

Jaw width mm	Clamping width mm	Jaw height mm	Overall height mm	Clamping groove width mm	Base plate L x W mm	Clamping force kN	Weight approx. kg	Vice 27625	Turntable 27627
113	105	31.6	90	14	300 x 160	25	13.5	102	102
135	125	39.6	104	14	365 x 200	35	25.0	103	103
160	145	49.6	120	18	410 x 240	45	40.0	104	104
200	185	62.6	145	22	460 x 280	55	65.0	105	105

27628

Machine vices, type MSR



Design

Mechanical clamping system. Body made of hardened steel 60 HRC. Clamping repeat accuracy 0.02 mm.

Scope of delivery:

Includes spanner, workpiece stop and 4 adjustable clamps (without T-groove screws).

Applications

For milling machines and machining centres.

Jaw width mm	Clamping width mm	Jaw height mm	Clamping groove width mm	Base plate L x W mm	Clamping force kN	Weight approx. kg	27628	...
125	150	40	20	345 x 95	30	12.7	101	
150	200	50	20	420 x 125	50	25.6	102	
150	300	50	20	520 x 125	50	29.5	103	
175	400	58	20	655 x 145	60	51.2	104	



27628

27629

Adjustable clamps for vices, type MSR



Design

Complete, for base mounting. Individual.

Applications

For art. no. 27628.

Note:

Four adjustable clamps are required for proper clamping.

Suitable for T-groove	For jaw width 125		For jaw width 150/175	
	27629	...	27629	...
12		101		201
14		102		202
16		103		203
18		104		204



27629

27631

Turntables for Vices, type MSR



Applications

Turntables for machine vices, type MSR, see art. no. 27628.

For jaw width mm	A mm	B mm	C mm	D mm	27631	...
125	226	23	47	95	101	
150	290	28	58	125	102	
175	320	28	58	145	103	



27631

27632 - 27635

Special clamping jaws for vices, type MSR



Design

Individual.

Applications

For art. no. 27628.

27632
Stepped jaws
Applications
For fixed jaw.

27633
Stepped jaws
Applications
For movable jaw.

27634
Prism jaws with jaw step
Applications
For movable jaw.

27635
Angle jaw
Applications
For movable jaw (for round parts).



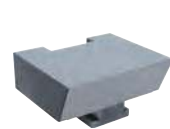
27632



27633



27634



27635

For jaw width mm	27632	...	27633	...	27634	...	27635	...
125		101		101		101		101
150		102		102		102		102
175		103		103		103		103

