

29001

Vertical collet vice

HOEFMANN

Design

- Basic body lacquered RAL 7035, light grey, union nut and clamping lever bronzed
- Collet chucks are not included in the scope of delivery

Applications

For quick fixing of workpieces with push-type collet chucks. Suitable for drilling and milling machines and thread-cutting equipment, and for use in measuring devices.

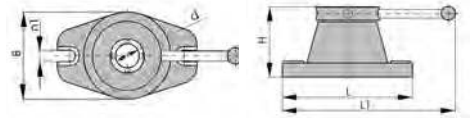
Note:

For collet chucks with round bore, see art. no. 21568 and 21570.
Hex and square collet chucks on request.

29001



Clamping range d mm	W mm	H mm	L x L1 mm	n1 mm	For collet type	29001	...
3-42	135	100	210 x 347	14	173 E		103



29003 - 29004

Horizontal and vertical index units, type HRTE 165/HRTU 165

Design

- With three-jaw chuck
- Rotary indexing table made of high-quality Meehanite cast iron, reliable and precise with precision tapered roller bearings
- Large spindle opening for clamping longer workpieces
- Direct indexing by means of a locking plate for higher speeds of mass-produced parts
- 24 positions (15° graduation)
- 7 locking discs for 2, 3, 4, 6, 8, 12 and 24-x graduations
- Includes clamping disc with 3 grooves

29003 101

HRTE 165

Design

Indexing in degrees using 360° scale.

29004 101

HRTU 165

Design

Indexing in degrees using 360° scale with crank and vernier.

29003



Art. no.	29003 101	29004 101
Type	HRTE 165	HRTU 165
Three-jaw chuck Ø:	165 mm	165 mm
Overall height:	200 mm	221 mm
Length x width:	218 x 260 mm	235 x 250 mm
Centre height:	130 mm	130 mm
Clamping disc Ø:	203 mm	203 mm
Clamp Ø of chucks, max.:	210 mm	210 mm
Aperture:	36 mm	36 mm
Weight:	32.5 kg	48.0 kg

Type	29003	...	29004	...
HRTE 165		101		
HRTU 165				101

29004



29005

Height-adjustable tailstocks, type HRST

29005 101

HRST 1

Applications

For rotary indexing table HRT 150 see art. no. 29210 102.

29005 102

HRST 2

Applications

For rotary indexing table HRT 200 see art. no. 29210 103 and rotary indexing unit HRTE 165 see art. no. 29003 101 and rotary indexing unit HRTU 165 see art. no. 29004 101.

29005

Type	Centre height mm	29005	...
HRST 1	97-101		101
HRST 2	103-166		102



29210 - 29211 Horizontal/vertical rotary indexing tables, type HRT

29210

Design

- Rotary indexing table made of high-quality Meehanite cast iron, reliable and precise with precision bearings
- Large spindle opening for clamping longer workpieces
- Quick indexing by means of a locking plate for higher speeds of mass-produced parts
- Worm gear hardened and ground
- Transmission ratio 90:1
- Workbench is scaled to 360°
- 1 complete turn of the hand wheel = 4° of rotation
- Option of indexing via scaled hand wheel with vernier scale

29211 101

Chuck flange

Applications

Suitable for **rotary indexing table HRT 150** see art. no. 29210 102.

29211 102

Chuck flange

Applications

Suitable for **rotary indexing table HRT 200** see art. no. 29210 103.

29211 103

Three-jaw chuck

Design

130 mm diameter.

Applications

Suitable for **rotary indexing table HRT 150** see art. no. 29210 102.

29211 104

Three-jaw chuck

Design

165 mm diameter.

Applications

Suitable for **rotary indexing table HRT 200** see art. no. 29210 103.

29210 101



Art. no.	29210 101	29210 102	29210 103
Type	HRT 100	HRT 150	HRT 200
Self-centring taper:	MK 2	MK 2	MK 3
Plate size:	Ø 110 mm	Ø 150 mm	Ø 200 mm
Overall height:	72 mm	79 mm	104 mm
Length x width:	138 x 118 mm	204 x 156 mm	265 x 199 mm
Centre height:	80 mm	102 mm	133 mm
Width/number of grooves:	11 mm/3	11 mm/3	14 mm/3
Weight:	9 kg	12 kg	30 kg

Type	29210	...	29211	...
HRT 100			101	
HRT 150			102	
HRT 200			103	
Chuck flange for HRT 150				101
Chuck flange for HRT 200				102
Three-jaw chuck for HRT 150				103
Three-jaw chuck for HRT 200				104

29212

Indirect dividing units, type HIT

29212 101

HIT 150

Design

- Includes 3 dividing discs, sector arm, angle cutter with spring plate

Applications

For **rotary indexing table HRT 150** see art. no. 29210 102 and **rotary indexing unit HRTU 165** see art. no. 29004 101.

29212 102

HIT 200

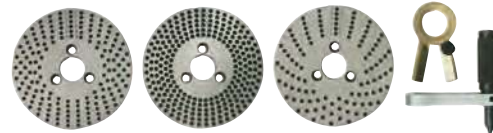
Design

- Includes 2 dividing discs, sector arm, angle cutter with spring plate

Applications

For **rotary indexing table HRT 200** see art. no. 29210 103.

29212 101



Type	29212	...
HIT 150		101
HIT 200		102

29220

Small rotary table, type RH

HOFMANN**Design**

- Stable and precise with low height and low weight
- With measuring drum for angle adjustment in degrees, minutes and seconds
- Adjustable worm gear eccentrically mounted in the housing

Applications

Specially designed for engraving and light milling machines.

29220



Table Ø mm	Overall height mm	Gear ratio	Readability/ adjustment capability	Indexing accuracy	Vernier scale	Weight approx. kg	29220	...
200	75	1:90	6 sec.	+/- 30 sec.	x	19		103

29231

Rotary tables, RI

HOFMANN**Design**

- With indirect dividing unit and coolant drain gutter
- Indexing accuracy +/- 15 sec.
- Manually operated rotary tables for horizontal use on machine tools

29231



Type	Table Ø mm	29231	...
RI-250	250		101
RI-320	320		102
RI-400	400		103

29236

Swivelling precision rotary tables, HPRS

HOFMANN**Design**

- With indirect dividing unit
- Indexing accuracy of +/- 10 sec. in the rotating axis and +/- 60 sec. in the swivel axis
- With graduating drum/vernier scale for use on machine tools and for measuring and testing facilities
- Swivel range from 0° to 90°

29236



Type	Table Ø mm	29236	...
HPRS-320	320		102