

73001 - 73002 Goldsmith's scissors

Quality
Special steel.

73001
With open arms.

73002
With finger holes.

| Total length mm | Blade | 73001 | ... | 73002 | ... |
|--------------------|----------------------|-------|-----|-------|-----|
| 180 | straight, with screw | | 101 | | 101 |



73007 Special sheet metal shears

Quality
Nickel-plated.

| Total length mm | Blade | 73007 | ... |
|--------------------|----------|-------|-----|
| 100 | straight | | 101 |



73008 Electrician's shears

Design
PVC handles.

| Total length mm | Blade | 73008 | ... |
|--------------------|----------|-------|-----|
| 140 | straight | | 101 |



73030 Telephone scissors

Design
Nickel-plated, with wire cutter.

| Total length mm | Blade | 73030 | ... |
|--------------------|----------|-------|-----|
| 125 | serrated | | 101 |



73050 - 73053 Paper scissors/work scissors

73050
Paper scissors
Nickel-plated, lower blade serrated.

73052
ATORN®

Work scissors
Blades polished, handles painted.

73053
ATORN®

Multi-purpose scissors
Blades made of stainless steel,
impact-resistant plastic handle.

Applications
For right-handed and left-handed people.

| Total length mm | Paper scissors | | Work scissors | | Multi-purpose scissors | |
|--------------------|----------------|-----|---------------|-----|------------------------|-----|
| | 73050 | ... | 73052 | ... | 73053 | ... |
| 200 | | 101 | | 101 | | |
| 210 | | | | | | 101 |
| 250 | | 103 | | 102 | | |



73056 Household and work scissors

Design
Ergonomic design. Handles made of shatterproof plastic with **skin-friendly soft rubber inserts**. The scissors can be adjusted with a screw. Suitable for right-handed and left-handed people.

Quality
Stainless steel, rust-proof, cold-hardened.

| Total length mm | 73056 | ... |
|--------------------|-------|-----|
| 130 | | 101 |
| 150 | | 102 |
| 250 | | 103 |



Scissors

73060

Multi-purpose scissors

Erdi

Design

One blade toothed, stainless steel cutting head, rust-proof, with spring and lock, impact-resistant plastic handles.

Applications

For cutting paper, cardboard, fabric, leather, fine sheet metal, plastic, carpet, twine, flowers, branches, etc.



73060 101



73060 102



| Total length mm | Blades | 73060 | ... |
|-----------------|----------|-------|-----|
| 190 | straight | 101 | |
| 190 | angled | 102 | |

73065

Multi-purpose scissors Combinox

Erdi

Design

Ergonomic handles with soft insert, one-hand locking, opening spring, integrated wire stripper for conductor cross-section 1.0 and 1.5 mm². Wire cutter, hanging eyelet.

Applications

For cutting paper, plastic, carpet, cardboard, wire made of soft materials (not steel), thin copper and aluminium sheets and much more.

Quality

All metal parts rust-proof stainless steel.



73065



| Total length mm | 73065 | ... |
|-----------------|-------|-----|
| 190 | 201 | |

Info

Erdi Blade qualities

The service life of the blades is in direct proportion to the qualities of steel used and their finish. In particular, the high performance scissors with HSS blades meet the highest standards for service life and long-lasting cutting performance. The shear heads of quality HSS TiN are additionally coated with wear-reducing, extremely hard titanium nitride. Depending on the application and frequency of use, special stainless steel, stainless steel and quality steel are available as further blade materials.

| Blade qualities | Hardness min. HRC | Service life |
|---------------------------|-------------------|--------------|
| ■ HSS-TiN | 65 | +++++ |
| ■ HSS | 65 | ++++ |
| ■ Special stainless steel | 61 | +++ |
| ■ Stainless steel | 59 | ++ |
| ■ Quality steel | 56 | + |

The higher the quality of the steel of the cutting edge, the longer the service life of the scissors!

| Blade quality | For maximum sheet thickness at tensile strength of: | | | |
|-----------------------------|---|-----------------------|-----------------------|------------------------|
| | 400 N/mm ² | 600 N/mm ² | 800 N/mm ² | 1100 N/mm ² |
| ■ Normal sheet metal shears | | | | |
| ■ HSS | 1.2 mm | 1.0 mm | 0.8 mm | 0.6 mm |
| ■ Stainless steel | 1.2 mm | 1.0 mm | 0.8 mm | - |
| ■ Quality steel | 1.2 mm | 1.0 mm | 0.8 mm | - |



| Blade quality | For maximum sheet thickness at tensile strength of: | | | |
|---|---|-----------------------|-----------------------|------------------------|
| | 400 N/mm ² | 600 N/mm ² | 800 N/mm ² | 1100 N/mm ² |
| ■ Manual sheet metal shears with leverage | | | | |
| ■ HSS-TiN | 1.5 mm | 1.2 mm | 1.0 mm | 0.8 mm |
| ■ HSS | 1.5 mm | 1.2 mm | 1.0 mm | 0.8 mm |
| ■ Special stainless steel | 2.0 mm | 1.5 mm | 1.2 mm | |
| | 1.5 mm | 1.2 mm | 1.0 mm | - |
| ■ Stainless steel | 1.2 mm | 1.0 mm | 0.8 mm | |
| | 1.5 mm | 1.2 mm | 1.0 mm | - |

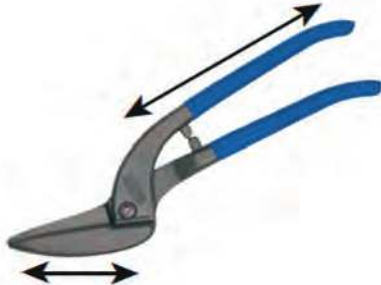


*When cutting folds, the scissors can briefly cut up to 3 x 0.6 mm (1.8 mm).

PLEASE NOTE! Manual sheet metal shears may only be used for cutting thin sheets of soft metals and steel. Not suitable for cutting round and square metal shapes such as wire.

1. The types

Standard sheet metal shears



In the case of normal plate shears, the blade and handle are traditionally forged in one piece. The cutting force is derived from the ratio of blade length to handle length.

Manual sheet metal shears with leverage



Manual sheet metal shears with leverage consisting of a cutting head and handle. Both parts are articulated to provide additional leverage.

2. The models

Ideal shears (sheet metal shears)



These shears are aptly named. Because ideal shears are real all-rounders. You can use them to cut through a metal sheet (continuous cut) and to cut large and small contours or radii (shape cut). It does not matter whether your cutting work is on the sheet edge (trim cut), or in the middle of the panel. Of course, you can also do simple notching work with ideal shears.

Shape-cutting shears



Shape-cutting shears are best if you want to make fine, tight curved cuts at the edge of the sheet. The fine blade shape of these shears allows you to cut extremely tight shapes or curves with ease.

Straight-cut shears



Do you want to cut through a metal sheet in the middle and/or in the edge area? Then the straight-cut shears are the right tool for you. The long blades of these tools allow you to notch and cut even large sheets to length quickly, with little effort and yet precisely.

3. Left or right-hand cutting scissors. What is the difference?



Left-cut shears

Right-cut shears

Right-cut shears are ground and constructed to allow easy cutting of curves to the right. Curved cuts from right to left are best done with left-cut shears.

It is often believed that right-cut shears are for right-handed people and left-cut shears are for left-handed people. This is not true. On the contrary, if you are a right-hander cutting a radius with a pair of right-cut shears (see above, from left to right), cut outwards from your wrist. With the left-cut shears (radius from right to left), cut inwards from your wrist. This is much more ergonomic. Give it a try!

73070

Universal straight-cut shears



Erdi

MULTISNIP Longstyle D 22 A

Design

2-component grip sleeves. Long blade for extra-long cuts. Offset at the side for continuous cutting. Cutter head made of drop-forged stainless steel, tempered. Heavy wearing for a long service life through additional inductive hardening of the blades. The angled cutting head always guides the hand over the workpiece and minimises the risk of injury. Double leverage for high cutting performance with little effort.

Applications

Cuts aluminium/copper sheets up to 1.2 mm, standard sheet metal up to 1 mm, stainless steel sheets up to 0.8 mm and wire mesh up to a diameter of 1 mm.

Quality

Stainless steel shears.

73070



| Total length mm | Blade length mm | 73070 | ... |
|--------------------|--------------------|-------|-----|
| 280 | 64 | | 101 |

Shears

73075

Universal straight-cut shears



Erdi

MULTISNIP Master D 51 A

Design

Fibreglass-reinforced plastic handles with soft insert. Long blade for long cuts. Offset at the side for continuous cutting. Cutter head and all metal parts made from rust-proof stainless steel, tempered. The angled cutting head always guides the hand over the workpiece and minimises the risk of injury. One-handed locking, opening spring.

Applications

Cuts aluminium sheet up to 0.75 mm, copper/standard sheet metal up to 0.6 mm and stainless steel sheet metal up to 0.4 mm.

Quality

Stainless steel blades, rust-proof.



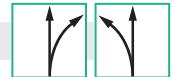
73075

| Total length mm | Blade length mm | 73075 | ... |
|--------------------|--------------------|-------|-----|
| 235 | 50 | | 101 |



73080

Ideal shears (short version 180 mm)



Erdi

Design

Extremely manoeuvrable and compact ideal shears, double leverage. Metal handle with moulded grip covers and soft insert.

Quality

Special stainless steel blades (HRC 61).



73080 102



73080 101

73080 101

Design

Right-handed use.

73080 102

Design

Left-handed use.



| Total length mm | Blade length mm | Cutting thickness up to mm stainless steel/standard sheet metal | 73080 | ... |
|--------------------|--------------------|--|-------|-----|
| 180 | 20 | 1.0/1.2 | | 101 |
| 180 | 20 | 1.0/1.2 | | 102 |



73095 - 73096

Pelican shears

Erdi

Design

Right-handed use, drop-forged, open arms, inductively hardened.

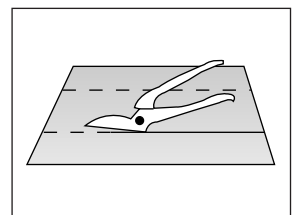
Applications

For long, straight and continuous cuts.

Also suitable for rust-proof stainless steel sheets.



73096



| Total length mm | Cutting thickness up to mm stainless steel/standard sheet metal | Quality steel | | Stainless steel | |
|--------------------|--|---------------|-----|-----------------|-----|
| | | 73095 | ... | 73096 | ... |
| 300 | 1.0/1.2 | | | 101 | 101 |
| 350 | 1.0/1.2 | | | | 102 |

73117

Shape-cutting shears DIN 6438



Design

Straight cut, with lever action.

Ergonomically shaped 2-component handles.

Applications

Cuts metal sheets up to 1.2 mm and stainless steel up to 0.7 mm.

Quality

Blades made from forged chromium-vanadium steel, toothed, inductively hardened.

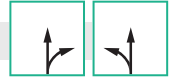


73117

| Total length mm | 73117 | ... |
|--------------------|-------|-----|
| 250 | | 201 |

73133 - 73134

Shape-cutting shears with leverage



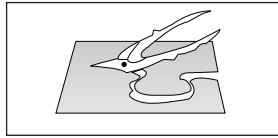
Erdi

Design

Right-handed or left-handed use. Self-opening, with locking, heavy-duty design, drop forged stainless steel cutter head, double-hardened blades, fine toothed. Ergonomically shaped handle with slip guard, plastic-coated with soft insert.

Applications

For shape cuts (including very tight radii) and short, straight cuts, for cutting sheets up to 1.2 mm (rust-proof stainless steel sheets up to 1.0 mm).



| Total length mm | Right | | Left | |
|--------------------|-------|-----|-------|-----|
| | 73133 | ... | 73134 | ... |
| 260 | | 101 | | 101 |

73099 - 73100

Berlin shears



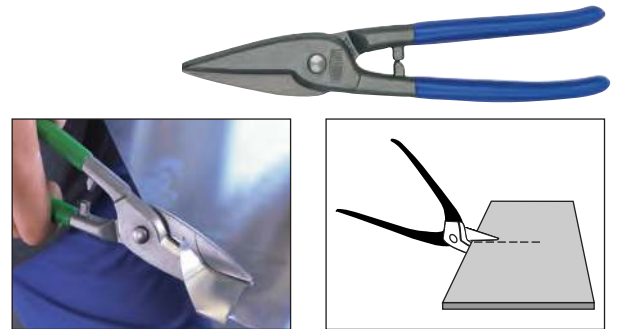
Erdi

Design

Right-handed use, drop-forged, open arms, inductively hardened.

Use

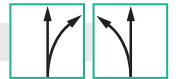
For long, straight cuts and sheet metal strips; also suitable for rust-proof stainless steel sheets.



| Total length mm | Blade width up to max. mm | Cutting thickness up to mm stainless steel/steel/copper/aluminium | Quality steel | | Stainless steel | |
|--------------------|------------------------------|--|---------------|-----|-----------------|-----|
| | | | 73099 | ... | 73100 | ... |
| 250 | 50 | 0.8/1.0/1.2 | | 101 | | 201 |
| 300 | 50 | 0.8/1.0/1.2 | | 102 | | 202 |

73103 - 73106

Punch snips



Erdi

Design

Right-handed or left-handed use. Drop forged, open arms.

Applications

For short, straight cuts, hole cut-outs and shape cuts.

73103 - 73104

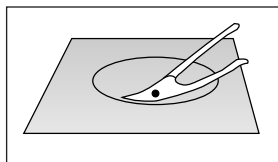
Quality

Quality steel.

73105 - 73106

Quality

Stainless steel.

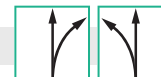


| Total length mm | Quality steel right | | Quality steel left | | Stainless steel right | | Stainless steel left | |
|--------------------|---------------------|-----|--------------------|-----|-----------------------|-----|----------------------|-----|
| | 73103 | ... | 73104 | ... | 73105 | ... | 73106 | ... |
| 250 | | 101 | | 101 | | 101 | | 102 |
| 275 | | | | | | 102 | | 102 |
| 300 | | | | | | 103 | | 103 |

Workshop equipment

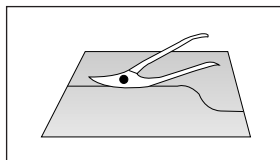
Shears

73110 - 73113 Sheet metal shears



Erdi

Design
Right-handed or left-handed use, drop forged, open arms.
Applications
As hole, shape and straight cut shears.



73110 - 73111
Quality
Quality steel.

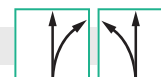


73112 - 73113
Applications
For rust-proof stainless steel sheets.
Quality
Stainless steel, inductively hardened.



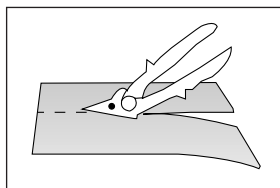
| Total length mm | Quality steel right | | Quality steel left | | Stainless steel right | | Stainless steel left | |
|--------------------|---------------------|-----|--------------------|-----|-----------------------|-----|----------------------|-----|
| | 73110 | ... | 73111 | ... | 73112 | ... | 73113 | ... |
| 260 | | | | | | | 101 | 101 |
| 280 | | 102 | | 102 | | | 102 | 102 |

73130 - 73131 Straight-cut shears with leverage



Erdi

Design
Right-handed or left-handed use. Self-opening, with locking, heavy-duty design, drop-forged cutter head, double-hardened blades, fine toothed. Ergonomically shaped handle with slip guard, plastic-coated with soft insert.

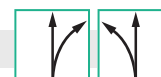


Applications
For long, straight cuts, for cutting sheet metal up to 1.2 mm (rust-proof stainless steel sheets up to 1.0 mm).
Quality
Cutter head made from stainless steel.



| Total length mm | right | | left | |
|--------------------|-------|-----|-------|-----|
| | 73130 | ... | 73131 | ... |
| 260 | | 101 | | 101 |

73138 - 73139 Sheet metal shears with lever action



HHW

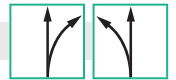
Design
Ergonomically shaped 2-component handles. Self-opening arms, with locking.
Applications
Cuts metal sheets up to 1.2 mm and stainless steel up to 0.7 mm. For shape cuts and short, straight cuts.
Quality
Blades made from forged chromium-vanadium steel, toothed, inductively hardened.



| Total length mm | right | | left | |
|--------------------|-------|-----|-------|-----|
| | 73139 | ... | 73138 | ... |
| 240 | | 101 | | 101 |

73140 - 73145

Sheet metal shears with lever action



Erdi

Design

For right- or left-handed use, drop forged, open arms.

Applications

As hole, shape and straight cut shears.

Quality

Cutter head made from stainless steel.

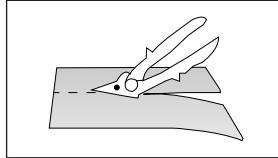
73140 - 73141

Design

Lightweight, handy design, made of drop-forged stainless steel, double-hardened blades, fine toothed, pressed steel handles, plastic handle sleeves with slip guard and soft inlay.

Applications

For cutting sheet metal up to 1.2 mm in thickness (rust-proof stainless steel sheets up to 1.0 mm).



73142 - 73143

Design

Self-opening arms, with locking, robust design, cutter head made of drop-forged stainless steel. Double-hardened blades, fine toothed, pressed steel handles with slip guard and soft inlay, PVC-coated.

Applications

For cutting sheet metal up to 1.2 mm in thickness (rust-proof stainless steel sheets up to 1.0 mm).



73144 - 73145

Design

Like art. no. 73142-143, but with steel handles and slip guard. Robust, for industrial use.

Applications

For cutting sheet metal up to 2.0 mm in thickness (rust-proof stainless steel sheets up to 1.2 mm).



73140



73141



73142



73143



73144



73145

| | right | | left | | right | | left | | right | | left | |
|--------------|-------|-----|-------|-----|-------|-----|-------|-----|-------|-----|-------|-----|
| Total length | 73140 | ... | 73141 | ... | 73142 | ... | 73143 | ... | 73144 | ... | 73145 | ... |
| mm | | | | | | | | | | | | |
| 230 | | 101 | | 101 | | | | | | 101 | | 101 |
| 240 | | | | | | | | | | | | |
| 260 | | | | | | 101 | | 101 | | | | |

73146 - 73148

High-performance sheet metal shears with lever action



Erdi

Design

For right-handed use, drop forged, open arms.

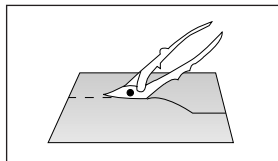
Use

As hole, shape and straight cut shears.

73146

Design

Drop-forged shear head, handles with soft inlay and slip guard. With soldered HSS blades, for heavy-duty use, up to 15x longer service life



73148

Design

Drop-forged shear head, with soldered HSS blades with titanium nitride (TiN) coating. Hardness at least 2300 HV, improved sliding properties through hard and smooth surfaces, reduced tendency to form built-up edges, multiple improvements in service life compared to HSS.

Use

Specifically designed to cut hard stainless steels. For straight, continuous and shaped cuts.



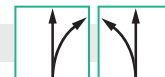
73146



73148

| | HSS right | | HSS/TiN right | |
|--------------|-----------|-----|---------------|-----|
| Total length | 73146 | ... | 73148 | ... |
| mm | | | | |
| 260 | | 101 | | 101 |

73150 - 73151 Sheet metal shears



Erdi

Design

For right- or left-handed use. Drop forged stainless steel. The optimised tuning of the leverage and blade geometry further reduces the effort by 25%. Comfortable, ergonomically designed handle with soft insert. Cuts stainless steel sheets up to 1.0 mm, steel sheets up to 1.2 mm, folded sheets up to 1.8 mm, aluminium/copper sheets up to 1.8 mm, wire mesh up to wire diameter 1 mm.

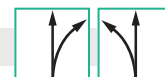
Applications

For straight, continuous and shaped cuts.



| Total length mm | Right | | Left | |
|--------------------|-------|-----|-------|-----|
| | 73150 | ... | 73151 | ... |
| 260 | | 101 | | 101 |

73152 Sheet metal shears



Erdi

Design

- With lever action

- Optimised design

The reduced grip opening angle ensures better handling for the same length of cut. And thanks to the more compact cutting head with partially recessed head fitting, curved cuts are even easier and more precise. The spring is maintenance-free.

- Extremely robust joint

The joint with sintered steel insert makes the shears especially smooth and resistant to wear. The bolted joint with a stud bolt is very robust.

- Centric locking bolt

The locking bolt can be operated easily and without grasping by both right- and left-handed users due to its central location on the upper handle.

- Double leverage

The double leverage results in a noticeable reduction in the amount of force applied. At the same time, cutting performance is significantly increased as a result.

Applications

For continuous straight and shaped cuts.

Quality

Special stainless steel blade quality.



| Total length mm | Right | | Left | |
|--------------------|-------|-----|-------|-----|
| | 73152 | ... | 73152 | ... |
| 230 | | 101 | | 102 |

73161 Mitre snips



Design

With two 45° stops and markings for 15°, 30° and 90°.

Applications

Wherever skirting and profiles made of plastic, rubber or wood need to be mitred. All parts are easily replaceable.



| | | | |
|----------------------|--|-------|-----|
| | | 73161 | ... |
| Mitre snips assembly | | | 101 |
| Replacement blade | | | 102 |
| Replacement pad | | | 103 |

73168 Band shears

Design

Forged from a single piece. Inductively hardened blades (58-61 HRC). Handles coated in plastic.

Applications

For steel packaging straps up to 0.8 x 28 mm.



| Total length mm | 73168 | |
|--------------------|-------|--|
| | 305 | |

73169 Safety steel band shears



Design

With lever action.

Hold-down clamp prevents the packaging strap from springing up. Comfortable grip covers with slip guard.

Applications

For cutting steel and plastic strapping band.



| Total length mm | For tape width up to mm | For tape thickness up to mm | 73169 | |
|--------------------|----------------------------|--------------------------------|-------|-----|
| | | | 250 | 25 |
| 600 | 50 | 1.2 | | 102 |

73170

Safety steel band shears

**Erdi****Design****With lever action.**

Cutter head made from precision casting, tempered. Inductively hardened blades. Small size for one-handed operation. Flat lower part can easily be pushed under the stretched steel band. **2K handle with slip guard.**

Applications

For hardened steel packaging straps up to 32 mm in width and 1.0 mm in thickness.

Quality

Special stainless steel.

Note:

The restraining device prevents the sudden lifting of steel band ends during continuous cutting – greatly reduces the risk of injury.



73170



| | | |
|--------------|-------|-----|
| Total length | 73170 | ... |
| mm | | |
| 260 | | 101 |

73167

Crate pliers

ATORN®**Design**

- Pushing the arms together raises the spring out of the stop cam groove
- With a bolt-shutter, the jaws pull the bolt from the stop cam groove when the arms are pressed together
- Optimised leverage
- Ergonomically shaped 2-component handle

Advantage:

- Time saving
- Increased safety at work
- No risk of injury when using these pliers

Applications

For easy opening of crates.

Quality

Chrome-plated surface and material handle made of plastic.



73167

| | | |
|--------------|-------|-----|
| Total length | 73167 | ... |
| mm | | |
| 220 | | 102 |

73270 - 73275

Safety scraper

73270

Design

With safety cover and slip-resistant handle.

Applications

For cleaning smooth surfaces.

73275

Spare blades.

Pack = 5 units.

| Blade width mm | Scraper | | Spare blades | |
|-------------------|---------|-----|--------------|-----|
| | 73270 | ... | 73275 | ... |
| 88 | | 101 | | 101 |



73270



73275

73280

Blade scrapers

martor

73280 101

Scrapex Argentax**Design**

With large, rounded handle and protective cap over the blade.

Applications

For removing residues on all smooth surfaces.

73280 201

Scrapex Cleany**Design**

Made of plastic with retractable blade.

Applications

For cleaning all smooth surfaces.

73280 102

Reinforced razor blade

Replacement blades for Scrapex Argentax and Cleany.

| | Blade width mm | 73280 | ... |
|------------------------------|-------------------|-------|-----|
| Argentax blade scrapers | 39 | | 101 |
| Cleany blade scrapers | 39 | | 201 |
| Replacement blades, 10 units | 39 | | 102 |



73280 101



73280 201



73280 102

Scraper

73300 - 73302 Triangular scraper

Design

With wooden handle and polished work surface.

Quality

Tool steel.

73300

Hollow-ground scraper

Complies with DIN 8350 C.

73302

Solid scraper

Complies with DIN 8350 B.

| Hollow-ground scraper | | |
|-----------------------|-------|-----|
| Blade length mm | 73300 | ... |
| 100 | | 101 |
| 150 | | 102 |
| 200 | | 103 |
| 250 | | 104 |
| 300 | | 105 |

| Solid scraper | | |
|--------------------|-------|-----|
| Blade length mm | 73302 | ... |
| 100 | | 101 |
| 150 | | 102 |
| 200 | | 103 |



73300



73302

73305 Flat scraper according to DIN 8350 A

Design

With wooden handle and polished work surface.

Quality

Tool steel.

| Blade length mm | Blade width mm | 73305 | ... |
|--------------------|-------------------|-------|-----|
| 100 | 20 | | 101 |
| 150 | 20 | | 102 |
| 200 | 20 | | 103 |
| 250 | 25 | | 104 |
| 300 | 25 | | 105 |



73305

73306 Flat scrapers



Design

Square blade with plastic handle, black.

Quality

Special steel, galvanised.

| Blade length mm | Blade width mm | 73306 | ... |
|--------------------|-------------------|-------|-----|
| 150 | 23 | | 101 |
| 55 | 23 | | 102 |



73306 101



73306 102

73308 - 73310 Cemented carbide flat scraper

73308 201-203

Design

- Carbide flat scraper
- Alloyed tool steel
- With replaceable, four-edged cemented carbide indexable insert
- Painted shaft
- Wooden handle

73310 201-203

Design

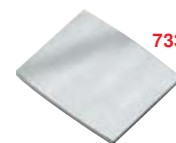
- Spare cemented carbide inserts

| Blade length mm | Blade width mm | Thickness mm | Flat scraper 73308 | ... | Spare cemented carbide inserts 73310 | ... |
|--------------------|-------------------|-----------------|-----------------------|-----|---|-----|
| 300 | 20 | 5 | | | 201 | 201 |
| 330 | 25 | 5 | | | 202 | 202 |
| 330 | 30 | 5 | | | 203 | 203 |



73308

NEW



73310

73311 Knife scraper set

Design

Practical storage system with replaceable blades. Easy blade change by loosening the knurled thumb screw on the scraper handle chuck.

Scope of delivery:

1 x 2K scraper handle, 1 x professional universal knife, 5 x trapezoidal blades, 5 x 12 mm wide/straight blades, 5 x 16 mm wide/straight blades, 5 x 20 mm wide/straight blades, 5 x 16 mm wide/53° angled blades.

Applications

Ideal for removing stickers, sealing and adhesive residues, e.g. on windscreens.

| Content | 73311 | ... |
|-----------|-------|-----|
| 27 pieces | | 101 |



73311

73312

Universal scraper

Design

With easily replaceable blade.

Applications

For removing sealing and adhesive residues, film, labels.

73312 201

| | | |
|---|-------|-----|
| | 73312 | ... |
| Scraper including 10 replacement blades | 201 | |
| 10 replacement blades, 12 mm wide | 202 | |



73315

Precision mechanical scraper



Quality
Vanadium extra steel.

73315

Design

Finely polished, encased with hollow blade up to the top, plastic handle with hand guard.

| | | | |
|--------------------|--------------------|-------|-----|
| Blade length mm | Total length mm | 73315 | ... |
| 80 | 165 | 101 | |



73316

Fine scraper

Design

Triple-edge, hollow-profile scraper blade, with black plastic protective cap and black plastic handle.

73316

| | | | | |
|--------------------|-------------------|---------------------|-------|-----|
| Blade length mm | Blade width mm | Weight approx. g | 73316 | ... |
| 25 | 8 | 40 | 101 | |



73317 - 73318

ERGO pocket paint scraper



73317 101

Design

Ergonomic pocket paint scraper. Two-component handle for comfort while working. Narrow front section with thumb recess for increased precision. Complete with triangular blade and holster.

Applications

Specially designed for precision work, e.g. on windows or hard-to-reach areas. Cemented carbide blades allow the scraping of paint, glue, lacquer and rust on any surface, e.g. wood, metal and concrete.

Note:

For replacement triangular blade, see art. no. 73318 104.

73317 102

Design

Ergonomic universal paint scraper. Two-component handle for comfort while working. Narrow blade holder for better accessibility in hard-to-reach areas.

Applications

Cemented carbide blades allow the scraping of paint, glue, lacquer and rust on any surface, e.g. wood, metal and concrete.

Note:

For straight replacement blade, see art. no. 73318 105.

73318 104

Triangular blade

Design

The Coromat cemented carbide spare blade prevents scratches or scoring and ensures a service life up to 50 times longer.

Applications

For pocket paint scraper, art. no. 73317 101. Can be used on three sides. For removing paint, lacquer and rust on the respective surface.

73318 105

Straight blade

Design

The Coromat cemented carbide spare blade prevents scratches or scoring and ensures a service life up to 50 times longer.

Applications

For universal paint scraper, art. no. 73317 102. Can be used on both sides. For removing paint, lacquer and rust on the respective surface.

73317 101



73317 102



73318 104



73318 105



| | Working width mm | Scraper | | Replacement blade | |
|------------------|---------------------|---------|-----|-------------------|-----|
| | | 73317 | ... | 73318 | ... |
| Scraper 625 | 25 | | 101 | | |
| Scraper 650 | 50 | | 102 | | |
| Triangular blade | 25 | | | | 104 |
| Straight blade | 50 | | | | 105 |

73329 Deburring tool for external thread/rod material

Design

- Powerful deburring tool with drive E 6.3
- For deburring damaged screws, stud bolts, threaded rods and rod-shaped parts with a diameter of 3-19 mm

Applications

Suitable for deburring steel, stainless steel, aluminium, copper, brass, wood, plastic.

| | | |
|------------------------------|-------|-----|
| Type | 73329 | ... |
| Uni reamer for threaded rods | | 101 |



73329 101



73330 Triangular bearing scraper

Design

With wooden handle and polished work surface.

Quality

Tool steel.

| | | | |
|-----------------|-----------------|-------|-----|
| Blade length mm | Spoon length mm | 73330 | ... |
| 200 | 85 | | 101 |

73330



73340 Hook tool set

Applications

Ideal for removing and inserting O-rings and seals.

| Contents | |
|----------|-----------------------------|
| 1 | hook tool straight , |
| 1 | hook tool S-shaped , |
| 1 | hook tool 90° , |
| 1 | hook tool round . |

| | | | |
|----------|---------|-------|-----|
| Contents | Version | 73340 | ... |
| 4-piece | in bag | | 101 |

73340



73405 Replacement blades B, shank diameter 2.6 mm

Applications

For art. no. 73400-73402.

Note:

For plastic handles, see art. no. 73469.

For spare blade holder B, see art. no. 73402.

73405 101

Shape B 10, HSS

For normal deburring work on steel, aluminium and plastic.

73405 102

Type B 10 L, HSS

For left-handed use.

73405 103

Type B 10, TiN-coated

To extend the service life.

73405 104

Type B 10 plus

For stainless steel.

73405 105

Type B 10 C, solid carbide

For stainless steel and plastics.

73405 106

Shape B 20, HSS

For normal deburring work on brass and cast iron.

Right- and left-hand cutting.

73405 108

Shape B 30, HSS

For simultaneous removal of inside and outside burrs.

73405 109

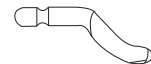
Shape B 60, HSS

For cross-drilled holes in poorly accessible places.

73405 101



73405 105



73405 102



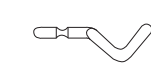
73405 106



73405 103



73405 108



73405 104



73405 109



| | | | |
|----------------------|---------|-------|-----|
| Type | | 73405 | ... |
| B 10 HSS | 10 pcs. | | 101 |
| B 10 L, HSS left | 10 pcs. | | 102 |
| B 10 TiN | 10 pcs. | | 103 |
| B 10 plus | 10 pcs. | | 104 |
| B 10 C solid carbide | 10 pcs. | | 105 |
| B 20 HSS | 10 pcs. | | 106 |
| B 30 HSS | 10 pcs. | | 108 |
| B 60 HSS | 10 pcs. | | 109 |

73400 - 73402

Deburring tools

Applications

For precise deburring work on drilled holes as well as on straight, concave and convex edges.

Note:

For replacement blades, see art. no. 73405.

73400

Deburring tool set B

Set contents:

Universal plastic handle EL 1000 with adjustable blade holder B for blades with shank diameter 2.6 mm. Including rotating HSS blades B 10 and B 20.

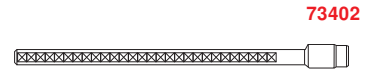
73402

Blade holder B, adjustable length. For all rotating blades, shank diameter 2.6 mm.

| Type | Length mm | Deburring set 73400 | ... | Blade holder B 73402 | ... |
|----------------|-----------|------------------------|-----|-------------------------|-----|
| B set | - | | | 101 | |
| Blade holder B | 131 | | | | 101 |



73400



73402



73410

Deburring tool set E

Set contents:

Universal plastic handle EL 1000 with adjustable blade holder E for blades with shank diameter 3.2 mm. Including rotating HSS blades E 100, E 200 and E 300.

Applications

For medium and heavy-duty deburring work on drilled holes as well as straight, concave and convex edges.

Note:

For replacement blades, see art. no. 73420.
For spare blade holder E, see art. no. 73417.

| Type | 73410 | ... |
|-------|-------|-----|
| E set | | 101 |



73410



73413

Compact set EL 6000

Set contents:

Compact handle EL 2100 with wear-resistant steel blade guide for shank diameter 3.2 mm. Including rotating HSS blades E 100, E 200 and E 300.

Applications

For all deburring work on the workpiece surface, where no length-adjustable blade holder is required.

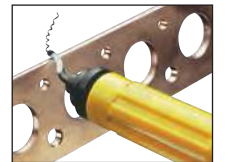
Note:

For replacement blades, see art. no. 73420.
For plastic handle, see art. no. 73469.

| Type | 73413 | ... |
|-------------|-------|-----|
| EL 6000 set | | 101 |



73413



73415

Quick deburring tool RB 1000

Design

Aluminium handle with replaceable HSS blade E 100.

Applications

For universal deburring work.

Note:

For replacement blades, see art. no. 73420.

| Type | 73415 | ... |
|-------------|-------|-----|
| RB 1000 set | | 101 |



73415



73417

Blade holder E

Applications

For all rotating blades, shank diameter 3.2 mm.

| Type | Length mm | 73417 | ... |
|----------------|-----------|-------|-----|
| Blade holder E | 131 | | 101 |



73417

73490

Deburring tool handle

Design

SOFTGRIP handle with twin blade storage for all blades with 2.6-mm and 3.2-mm shank.

| Type | For blades art. no. | 73490 | ... |
|---------|-----------------------------------|-------|-----|
| SG 3000 | 73405, 73420, 73476, 73478, 73479 | | 201 |



73490

Workshop equipment

Deburring tools

73420

Replacement blades E, shank diameter 3.2 mm

Applications

For art. no. 73410 to 73417.

Note:

For plastic handles, see art. no. 73469.

For spare blade holder E, see art. no. 73417.

73420 101

Type E 100, HSS

For heavy-duty deburring work on steel, aluminium and plastic.

73420 102

Type E 100 L, HSS

For left-handed use.

73420 103

Type E 100, TiN-coated

To extend the service life.

73420 104

Type E 100 plus

Particularly suitable for stainless steels.

73420 105

Type E 100 C

With cemented carbide blade for stainless steel and plastic.

73420 107

Type E 101

With thick shank and thin blade for steel, aluminium and plastic.

73420 108

Type E 101 L

For left-handed use.

73420 109

Type E 101, TiN-coated

For extended service life.

73420 110

Type E 150, HSS

With thick shank and thin cutting edge for small holes from a diameter of 1.2 mm.

73420 111

Type E 200, HSS

For heavy-duty deburring work on brass and cast iron. Right- and left-hand cutting.

73420 113

Type E 202, HSS

With thick shank and thin cutting edge for brass and cast iron.

73420 114

Type E 300, HSS

For simultaneous removal of large internal and external burrs on holes in sheet metal and tubes.

73420 115

Type E 350, HSS

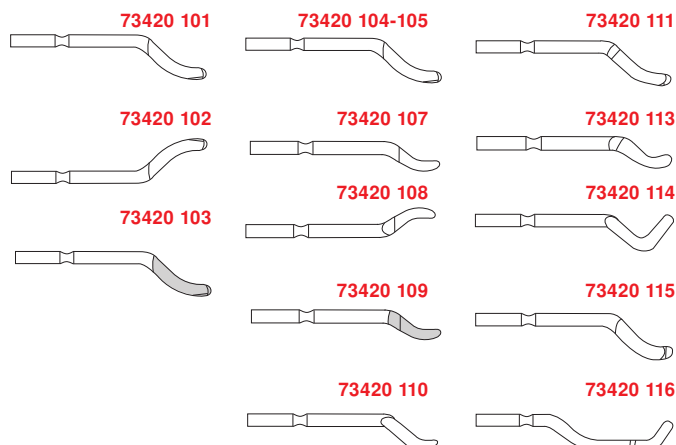
For large burrs on straight edges.

73420 116

Type E 600, HSS

For large burrs on cross-drilled holes.

| Type | | 73420 | ... |
|-------------------|---------|-------|-----|
| E 100, HSS | 10 pcs. | | 101 |
| E 100 L HSS, left | 10 pcs. | | 102 |
| E 100, TiN | 10 pcs. | | 103 |
| E 100 plus | 10 pcs. | | 104 |
| E 100C | 10 pcs. | | 105 |
| E 101 | 10 pcs. | | 107 |
| E 101 L, left | 10 pcs. | | 108 |
| E 101 TiN | 10 pcs. | | 109 |
| E 150, HSS | 10 pcs. | | 110 |
| E 200, HSS | 10 pcs. | | 111 |
| E 202, HSS | 10 pcs. | | 113 |
| E 300, HSS | 10 pcs. | | 114 |
| E 350, HSS | 10 pcs. | | 115 |
| E 600, HSS | 10 pcs. | | 116 |



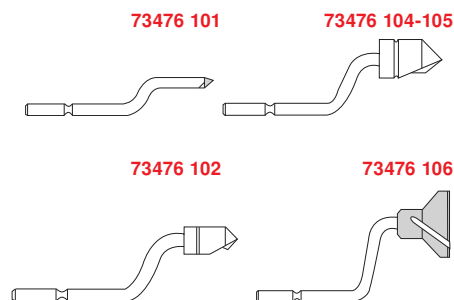
73476

Deburring tools

Applications

For crank countersinks and chamfers.

| Type | Diameter mm | 73476 | ... |
|-------------------------------|-------------|-------|-----|
| BC 3200 for drilled holes | 3.2 | | 101 |
| BC 6300 for drilled holes | 6.3 | | 102 |
| BC 1040 for drilled holes | 10.4 | | 104 |
| BC 1650 for drilled holes | 16.5 | | 105 |
| EX 2000 for external diameter | 18.0 | | 106 |



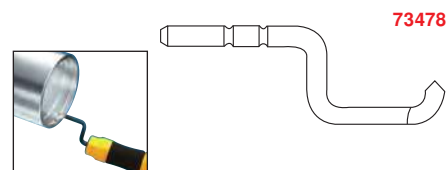
73478

Recess deburring blade type BO 1000

Applications

For deburring grooves for O-rings on inner diameters.

| Type | 73478 | ... |
|---------|-------|-----|
| BO 1000 | | 102 |



73479

Deburring blade type BC 1000

Applications

For cleaning and deburring internal threads with a diameter of at least 9 mm, all pitches. For all 55° and 60° thread flanks.

| Type | 73479 | ... |
|---------|-------|-----|
| BC 1000 | | 102 |



73425 - 73430

Countersink deburring tool set EL 1300

Applications

For deburring and chamfering drilled holes with a diameter up to 30 mm.

73425

Countersink deburring tool EL1300

Set contents:

Universal plastic handle EL 1000 with adjustable blade holder C and HSS countersunk head C 20.

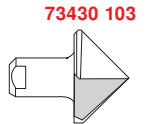
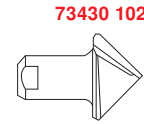
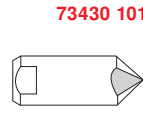
73428

Spare blade holder C

For all type C countersink tools, with M7 external thread.

73430

Replacement type C HSS countersinks, 90°.



| Type | Length mm | Diameter mm | Deburring set | | Blade holder C | | Countersink C | |
|------------------------------------|-----------|-------------|---------------|-----|----------------|-----|---------------|-----|
| | | | 73425 | ... | 73428 | ... | 73430 | ... |
| Countersink deburring tool EL 1300 | - | - | | 101 | | | | |
| Blade holder C | 131 | - | | | 101 | | | |
| Countersink C 12 | - | 12 | | | | | 101 | |
| Countersink C 20 | - | 20 | | | | | 102 | |
| Countersink C 30 | - | 30 | | | | | 103 | |

73435 - 73436

Mini deburring tool

Design

With Softgrip holder.

73435

Mini set FT 3000

3 pieces.

Set contents.

1 crank countersink,
1 triangular scraper,
1 x universal deburring tool.

73436 101

Crank countersink

Applications

For drilled holes with a diameter of up to 3.2 mm.

73436 102

Triangular scraper

Applications

For fine and difficult work.

73436 103

Universal deburring tool

Applications

For drilled holes, edges and contours.



| Type | 73435 | ... |
|-------------|-------|-----|
| Set FT 3000 | 101 | |



| Type | 73436 | ... |
|--------------------------|-------|-----|
| Crank countersink | 101 | |
| Triangular scraper | 102 | |
| Universal deburring tool | 103 | |



73440 - 73446

Groove deburring tool set EL 1400

Applications

For deburring longitudinal slots, slots and keyways in shafts and hubs.

73440

Groove deburring tool EL 1400

Set contents:

Universal plastic handle EL 1000 with adjustable blade holder N and 1 HSS blade N 80 K.

73446

Replacement HSS blades type N.



| Type | Groove width mm | Deburring set | | Blades N | |
|-------------------------------|-----------------|---------------|-----|----------|-----|
| | | 73440 | ... | 73446 | ... |
| Groove deburring tool EL 1400 | - | | 101 | | |
| N 70 K | 1.2-8 | | | | 101 |
| N 80 K | 2.4-11 | | | | 102 |
| N 90 K | 3.0-15 | | | | 103 |



Deburring tools

73450 - 73455 Maxi triangular scraper set EL 1601

Applications

For local material removal and deburring more difficult areas.

73450

Maxi triangular scraper set EL 1601

Set contents:

Universal plastic handle EL 1000 with adjustable blade holder T and 1 HSS triangular scraper blade T 60 with external thread.

73455

Spare triangular scraper blades type T, HSS with external thread.



73453

Spare blade holder T

with internal thread.

| Type | Length mm | Size mm | Set | | Holder | | Blades | |
|----------------|-----------|---------|-------|-----|--------|-----|--------|-----|
| | | | 73450 | ... | 73453 | ... | 73455 | ... |
| EL 1601 | - | - | | 101 | | | | |
| Blade holder T | 112 | - | | | 101 | | | |
| T 40, HSS | - | 5 x 40 | | | | | 101 | |
| T 60, HSS | - | 7 x 60 | | | | | 102 | |

73450

73453

73455 101

73455 102

73460 - 73461 Edge deburring tool set EL 1700

Applications

For 45° chamfers on workpiece edges.

Set contents for 73460

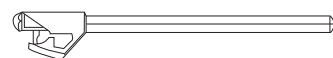
- 1 Universal plastic handle EL 100 with adjustable blade holder EL 0750,
- 1 Adjusting screw for chamfer size, guide shoe is firmly attached to the blade holder,
- 1 Blade L-1.



73461

Spare blade holder EL 0750.

| Type | Deburring set | | Blade holder | |
|-----------------------|---------------|-----|--------------|-----|
| | 73460 | ... | 73461 | ... |
| Deburring set EL 1700 | | 101 | | |
| Blade holder EL 0750 | | | | 101 |



73460

73461

73463 - 73464 Double deburring tool DB

73463

Design

Plastic handle with hand guard and 2 HSS round cutting blades N 80.

Applications

For simultaneous two-sided deburring of narrow bars up to 12 mm, sheet metal parts and edges. Suitable for almost any material. The round cutting blades can be used to the full extent of both edges by turning.

73464 102

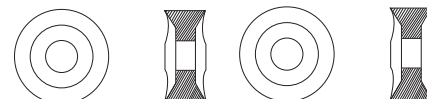
For stainless steel.



| Type | Pack = pieces | Deburring tool | | Round cutting blade | |
|-------------------------------------|---------------|----------------|-----|---------------------|-----|
| | | 73463 | ... | 73464 | ... |
| Deburring tool DB | - | | 101 | | |
| Spare round cutting blade N 80 | 10 | | | | 101 |
| Spare round cutting blade N 80 M 42 | 10 | | | | 102 |

73464 101

73464 102



73465

Deburring tool set

Applications

For precise, safe and fast deburring of drilled holes, straight, concave and convex edges and metal sheets.

73465

| Set contents | |
|--------------|--|
| 1 | Universal plastic handle EL 1000, |
| 1 | Type B blade holder with |
| 1 | HSS blade B 10 for normal deburring work, for steel, aluminium and plastic |
| 1 | HSS blade B 20 for regular deburring work, for brass and cast iron |
| 1 | Type E blade holder with |
| 1 | HSS blade E 100 for heavy-duty deburring work, for steel, aluminium and plastic |
| 1 | HSS blade E 200 for heavy-duty deburring work, for brass and cast iron |
| 1 | HSS blade E 300 for heavy-duty deburring work, for drilling holes in sheet metal and tubes |
| 1 | Type N blade holder with |
| 1 | HSS blade, for keyway width 2.4–11 mm |
| 1 | Type C blade holder with |
| 1 | HSS countersunk head C 20, 20 mm diameter |
| 1 | Type D blade holder with |
| 2 | HSS triangular scrapers 3.2 x 50 mm |
| 1 | D 66 blade for inside and cross-drilled holes |
| 1 | D 50 blade for fine deburring work, with protective cap |
| 1 | Double deburring tool DB 2000 with |
| 2 | HSS round cutting blades for narrow workpieces and metal sheets With spare screws and T-handle wrench |



| | | |
|----------------|-------|-----|
| Design | 73465 | ... |
| in plastic box | | 101 |

73466

Deburring tool sets

73466 101

Deburring tool set E.

For medium and heavy-duty deburring work on drilled holes as well as straight, concave and convex edges.

| Set contents 73466 101 | |
|---|---|
| 1 | Universal plastic handle EL 1000, |
| 1 | Blade holder E for blades with shank diameter 3.2 mm, |
| 3 HSS blades, for difficult deburring work: | |
| 1 | E 100 blade for steel, aluminium and plastic, |
| 1 | E 200 blade for brass and cast iron, |
| 1 | E 300 blade for drilled holes in sheet metal and pipes, |
| 10 each of Additional E 100 and E 200 blades, | |
| 10 | E 300 blades for large burrs on straight edges. |

Note:

For replacement blades E (shank diameter 3.2 mm), see art. no. 73420.

73466 102

Deburring tool set B.

For precise deburring work on drilled holes as well as on straight, concave and convex edges.

| Set contents 73466 102 | |
|---|---|
| 1 | Universal plastic handle EL 1000, |
| 1 | Blade holder B for blades with shank diameter 2.6 mm, |
| 2 HSS blades, for normal deburring work: | |
| 1 | B 10 blade for steel, aluminium and plastic, |
| 1 | B 20 blade for brass and cast iron, |
| 10 each of additional B 10 and B 20 blades. | |

Note:

For replacement blades B (shank diameter 2.6 mm), see art. no. 73405.



| | Content | Design | 73466 | ... |
|----------------------|----------|----------------|-------|-----|
| Deburring tool set E | 35 piece | in plastic box | | 101 |
| Deburring tool set B | 24 piece | in plastic box | | 102 |

73456

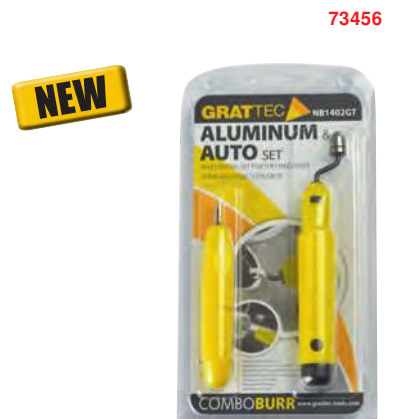
Deburring tool set NB1402GT

Applications

Starter set for ambitious hobby craftsmen and mechanics. Ideal for deburring and countersinking aluminium.

| Set contents | |
|--------------|-----------------------|
| 1 | EL-YT1200 |
| 1 | NB1000GT handle |
| 1 | GT-E100 blade |
| 1 | GT-E200 blade |
| 1 | GT-E300 blade |
| 1 | GT-E100S blade |
| 1 | GT-BC1040 countersink |

| Type | Contents | 73456 | ... |
|----------|----------|-------|-----|
| NB1402GT | 7-piece | | 101 |



73468 Deburring tool set EL-7000

| Set contents | |
|--------------|------------------------------------|
| 1 | EL-1200 E set |
| 1 | EL-1100 B set |
| 1 | EL-1300 Countersink deburring tool |
| 1 | EL-1400 Groove deburring tool |
| 1 | EL-1501 Internal deburring tool |
| 1 | EL-1601 Maxi triangular scraper |
| 1 | EL-RB1000 Rapid deburring tool |

| Type | Contents | Version | 73468 | ... |
|---------|----------|---------|-------|-----|
| EL-7000 | 7-piece | in case | | 101 |



73468

73467 Deburring multitool 4 pcs.

Design

- Practical and handy as a pocket knife
- Contains the four most popular deburring tools
- Light and space-saving in your pocket
- All blades are replaceable
- Central lock for easy unlocking and securing of all tools

- Our multi-tool is equipped with:

- 1) **GT-E100:** HSS blade for heavy-duty deburring work on steel, aluminium and plastic
- 2) **GT-B20:** HSS blade for normal deburring work on brass and cast iron
- 3) **GT-D50:** HSS triangular scraper 3.2 x 50 mm for fine deburring work
- 4) **GT-BC1040:** Patented crank countersink made of HSS steel for drilled holes up to a diameter of 10.4 mm



73467

| | | 73467 | ... |
|---------------------|--|-------|-----|
| Deburring multitool | | | 101 |

73469 Plastic handles

Design

Length 112 mm, diameter 25 mm. Blade holder in the qhollow handle.

73469 101

Type EL 1000 GT

Applications

For blade holders B, C, D, E, L, N and T.

73469 102

Type EL 2100 GT compact handle

Applications

For direct attachment of rotating blades with 3.2 mm diameter (art. no. 73420) and crank arm blades art. no. 73476 and 73478 102.

73469 103

Type NB 1000 GT

Applications

Deburring tool holder for all blades with a blade shank diameter of 3.2 mm.

| Type | 73469 | ... |
|------------|-------|----------------|
| EL 1000 GT | | 101 |
| EL 2100 GT | | 102 |
| NB 1000 GT | | 103 NEW |



73469 101



73469 102



73469 103

73350 Ceramic deburring tool

73350 101

KERAMICUT CR 2000

Design

Long service life thanks to wear-resistant ceramic blade (thickness 1.7 mm). Blunt blade angle, so no risk of injury.

Applications

For damage-free deburring without rejection of plastic parts and NF metals such as aluminium. Precision work on straight, concave and convex edges, as well as drilled holes.

73350 102

Spare ceramic blade

| | | 73350 | ... |
|------------------------|--|-------|-----|
| Ceramic deburring tool | | | 101 |
| Spare ceramic blade | | | 102 |



73350



73352

Deburring tool set NB1401GT

Applications

Ideal for scraping and cleaning surfaces, as well as deburring work on edges and pipe or workpiece sections made from aluminium, copper or plastic.

| Set contents | |
|--------------|------------------|
| 1 | NB1000GT |
| 1 | CR1500GT |
| 1 | GT-E100 blade |
| 1 | GT-E100TIN blade |
| 1 | GT-E350 blade |
| 1 | GT-E100S blade |
| 1 | GT-E150 blade |

| Type | Contents | 73352 | ... |
|----------|----------|-------|-----|
| NB1401GT | 7-piece | | 101 |

NEW

73352



73480

Triangular scraper SC 8000

73480 201

Design

Triangular scraper SC 8000 with 4 x 80 mm double-sided, hollow-ground scraper blade. The projection of the blade is adjustable.

| Type | 73480 | ... |
|-----------------|-------|-----|
| SC 8000 | | 201 |
| Blade T 80/4x80 | | 202 |

73480 202

Spare triangular scraper blade type T 80, double-sided.

73480 201



73480 202



73481 - 73483

Reverse deburring tool

Applications

For deburring the front and back sides of drilled holes. By pressing on the shank head, the deburring blade can be placed in a vertical position for inserting into the drilled hole.

73481

EL-RC3000 DRILLING patent protected.

Design

3-piece. 1 reverse deburring tool each for diameters 3-5.5/5-10/10-22 mm. Hexagon socket screwdriver for blade changes included in the shank. In storage box.

73482 101

Design

Swivelling HSS blade BR1000 for diameters 3-5.5 mm. With retractable blade and hex key to change the blade.

73481

73482 102

Design

Swivelling HSS blade BR2000 for diameters 5.5-10 mm. With retractable blade and hex key to change the blade.

73482 103

Design

Swivelling HSS blade BR2200 for diameters 10-22 mm. With retractable blade and hex key to change the blade.

73483

Replacement blades for reverse deburring tool art. no. 73481-73482.

| Application range diameter mm | Set | Individual | | Replacement blades | |
|-------------------------------|-------|------------|-------|--------------------|-------|
| | 73481 | ... | 73482 | ... | 73483 |
| 3-22 | | 101 | | | |
| 3-5.5 | | | | 101 | 101 |
| 5.5-10 | | | | 102 | 102 |
| 10-22 | | | | 103 | 103 |



73482



Workshop equipment

73610 - 73612 Hand lever sheet metal shears

Design

Robust, stable construction made from quality steel. Levers with strong springs make cutting easier. The high-quality, durable cutting blades are hardened and tempered.

Applications

For sheet metal plates and round steel bars.

Note:

Long cutting blades 300, 400 or 500 mm and circular blade deliverable on request.

73611

Replacement upper blade.

73611



73612

Replacement lower blade.

73612



73610

| Model | Blade length mm | Cutting performance plates | Cutting performance round bars | mm metal sheets | weight kg | Metal shears | | Upper blade | | Lower blade | |
|-------|-----------------|----------------------------|--------------------------------|-----------------|-----------|--------------|-----|-------------|-----|-------------|-----|
| | | | | | | 73610 | ... | 73611 | ... | 73612 | ... |
| 2BR4 | 120 | 4 | 11 | 50 x 4 | 8 | | 201 | | 201 | | 201 |
| 2BR5 | 150 | 5 | 11 | 60 x 5 | 10 | | 202 | | 202 | | 202 |
| 2BR6 | 180 | 6 | 13 | 70 x 6 | 18 | | 203 | | 203 | | 203 |

73613 Table sheet metal shears



Design

- Heavy-duty manual table sheet metal shears
- Extremely stable and heavy cast iron construction
- Open design, large cast iron workbench
- The standard retainer ensures good cutting results
- Detachable mitre stop on workbench
- Adjustable side stop via hand crank

Applications

For sheet metal panels of up to 1.5 mm and continuous lengths up to a width of 1250 mm.



73613

| Type | Width of cut max. mm | Max. sheet thickness mm tensile strength 400 N/mm ² | Limit stop range mm | Workbench (L x W) mm | Dimensions (L x W x H) mm | Weight approx. kg | 73613 | ... |
|------------|----------------------|--|---------------------|----------------------|---------------------------|-------------------|-------|-----|
| BSS 1020 E | 1050 | 1.50 | 0-600 | 1280 x 600 | 2000 x 850 x 1500 | 435 | | 101 |

Workshop equipment

