


**ATORN®**
**Note:**

Accessories such as tool panel, base shell, insert shells, etc. available on request.

**86301 101**
**Tool case**

- ABS plastic, black
- Extremely tough
- Suitable for flying
- With solid aluminium frame
- Glide runners
- Ratchet hinge
- Barrel locks
- Robust, scratch-resistant and dustproof, washable
- 1 tool panel with 25 tool compartments
- 1 x keep-safe compartment 400 mm
- 1 tool panel with 10 tool compartments
- 1 cover panel with 15 tool compartments
- 1 x keep-safe compartment 400 mm
- 1 base shell with cover panel, height 88 mm, freely dividable.

**86301 102**
**Tool case**

- ABS plastic, black
- Extremely tough
- Suitable for flying
- With solid aluminium frame
- Glide runners
- Ratchet hinge
- Barrel locks
- Robust, scratch-resistant and dustproof, washable

- 1 tool panel with 25 tool compartments
- 1 x keep-safe compartment 400 mm
- 1 cover panel with 15 tool compartments
- 1 x keep-safe compartment 400 mm
- 1 base shell with cover panel, height 88 mm, freely dividable

**86301 103**
**Roller case**

- 4 x telescopic drawers, 1050 mm long
- Extra wide, powder-coated
- Case can be pushed or pulled
- Rubberised, mounted, large runners
- Wide wheel base since the case is rolled on the long side
- It is therefore secured against tipping and movement of the content is minimal
- Case shells made from ABS plastic, black
- Double aluminium frame
- Ratchet hinges
- Barrel locks
- Glide runners
- Tool panels made from Con-P®
- 1 tool panel with 25 tool compartments and
- 1 x keep-safe compartment 400 mm
- 1 cover panel with 15 tool compartments and
- 1 x keep-safe compartment 400 mm
- 1 freely dividable inner shell, height 86 mm

86301 101

86301 102



86301 103



Design	Internal dimensions mm	Volume approx. litres	Weight approx. kg	86301	...
Tool case	430 x 165 x 310	22	5.2		101
Tool case	470 x 180 x 360	30	5.1		102
Roller case	470 x 190 x 360	32	8.0		103

**ATORN®**
**Design**

- Shoulder bag with carry strap
- 2 outside pockets with plastic boxes
- 2 removable tool panels with 3 plug-in rails

**NEW**

86303



Length mm	Height mm	Width mm	Colour	Weight kg	86303	...
200	100	300	black/grey	1.3		101

**ATORN®**
**Design**

- Made of injected ABS plastic
- Aluminium frame for structural reinforcement
- Carry handle with soft rubber insert
- 2 high-quality, lockable locks
- 2 cover hinges
- 1 one-sided tool panel with
- 6 storage pockets and
- 12 rubber band brackets

**Cover:**

- 5 storage pockets
- Document compartment
- Integrated storage pockets

**Floor area:**

- 2 adjustable compartments

**Advantage**

- Interior is easy to clean

**NEW**

86304



Internal length mm	Internal height mm	Internal width mm	Colour	Weight kg	86304	...
450	160	320	black	3.7		101

86300

## Tool case CLASSIC Plus CP-7 (empty)



86300

**PARAT** **Design**

- Case shells made of X-ABS plastic, aluminium
- Extremely tough
- Suitable for flying
- Black
- Tool panels made from Con-P®
- Internal double aluminium frame
- Stable handle with padded recessed handles
- Ratchet hinges with lock

- Glide runners
- 1 tool panel, 2-sided, with CP-7 tool holders up to Ø 11 mm and up to Ø 15 mm
- 1 tool panel with CP-7 tool holders up to Ø 11 mm
- 1 cover panel with CP-7 tool holders up to Ø 26 mm
- 1 base shell with cover panel, height 58 mm, freely dividable
- 1 document compartment in lid



Internal dimensions mm	Volume approx. litres	Load capacity kg	Weight approx. kg	86300	...
460 x 190 x 310	27	30	5.0		301

86305

## Tool case CLASSIC Deep Space CP-7 (empty)



86305

**PARAT** **Design**

- Case shells made of aluminium, X-ABS plastic
- Extremely tough
- Suitable for flying
- Black
- Tool panels made from Con-P®
- Internal double aluminium frame
- Stable handle with padded recessed handles
- Ratchet hinges with lock
- Glide runners

- 1 cover panel with CP-7 tool holders up to Ø 26 mm
- 1 tool panel, 2-sided, with CP-7 tool holders up to Ø 11 mm and up to Ø 15 mm
- 1 base shell with cover panel, height 88 mm, freely dividable
- 1 document compartment in lid

**Note:**

Accessories such as tool panel, base shell, insert shells, etc. available on request.



Internal dimensions mm	Volume approx. litres	Load capacity kg	Weight approx. kg	86305	...
470 x 210 x 360	36	30	5.7		203

86308

## Tool case CLASSIC (empty)



86308 101

**PARAT** **Design**

- Case shells made of X-ABS plastic
- Extremely tough
- Suitable for flying
- Tool panels made from Con-P®
- Black
- Double aluminium frame
- Stable handle with padded recessed handles
- Barrel locks
- Ratchet hinges
- Glide runners

**86308 101  
CLASSIC Plus****Design**

- 1 tool panel with 25 tool compartments
- 1 x keep-safe compartment 400 mm
- 1 tool panel with 10 tool compartments
- 1 cover panel with 15 tool compartments
- 1 x keep-safe compartment 400 mm
- 1 base shell with cover panel, height 58 mm, freely dividable
- 1 document compartment in lid

**Note:**

Accessories such as tool panel, base shell, insert shells, etc. available on request.

**86308 102  
CLASSIC Deep Space****Design**

- 1 tool panel with 25 tool compartments
- 1 x keep-safe compartment 400 mm
- 1 cover panel with 15 tool compartments
- 1 x keep-safe compartment 400 mm
- 1 base shell with cover panel, height 88 mm, freely dividable
- 1 document compartment in lid



86308 102

Internal dimensions mm	Volume approx. litres	Load capacity kg	Weight approx. kg	86308	...
460 x 190 x 310	27	30	4.6		101
470 x 210 x 360	36	30	5.4		102

86310

## Tool case CLASSIC Plus &amp; Style (empty)



86310

**PARAT** **Design**

- Aluminium
- Silver
- Suitable for flying
- Double aluminium frame
- Handle with padded recessed handles
- Barrel locks
- Ratchet hinges

- 1 tool panel with 25 tool compartments
- 1 x keep-safe compartment 400 mm
- 1 tool panel with 10 tool compartments
- 1 cover panel with 15 tool compartments
- 1 x keep-safe compartment 400 mm
- 1 base shell with cover panel, height 58 mm, freely dividable
- 1 document compartment in lid

**Note:**

Accessories such as tool panel, base shell, insert shells, etc. available on request.



Internal dimensions mm	Volume approx. litres	Load capacity kg	Weight approx. kg	86310	...
460 x 170 x 310	24	30	5.1		201

86311

## Aluminium tool case (empty)

## Design

- Scratch-resistant ABS outer sheet
- Rounded aluminium profile
- 2 padlocks
- Removable tool panel in lid
- Removable dividers in base
- Shoulder strap holder on side
- Colour: black

Size (L x W x H) mm	Load kg	Weight approx. kg	86311	...
450 x 335 x 155	10	2.85		101



86311

86315

## Tool case SILVER (empty)

## PARAT

## Design

- Case shells made of X-ABS plastic
- Tool panels made from Con-P®
- Black
- Aluminium frame
- Robust handle
- Barrel locks
- Metal hinges
- Glide runners

## Scope of delivery

- 2 keys
- For dividing base shells individually:
- 1 lengthwise divider
- 3 crosswise dividers



86315 100

## SILVER Allround

## Design

- 1 tool panel with 13 tool compartments
- 1 cover panel with 15 tool compartments
- 1 base shell with cover panel, height 58 mm, freely dividable
- Document compartment in lid

86315 101

## SILVER Plus

## Design

- 1 tool panel with 25 tool compartments
- 1 x keep-safe compartment 400 mm
- 1 cover panel with 15 tool compartments
- 1 x keep-safe compartment 400 mm
- 1 base shell with cover panel, height 58 mm, freely dividable

86315 102

## SILVER KingSize

## Design

- 1 tool panel with 25 tool compartments
- 1 x keep-safe compartment 400 mm
- 1 tool panel with 10 tool compartments
- 1 cover panel with 15 tool compartments
- 1 x keep-safe compartment 400 mm
- 1 base shell with cover panel, height 58 mm, freely dividable



86315 100



86315 101



86315 102

Internal dimensions mm	Volume approx. litres	Load capacity kg	Weight approx. kg	86315	...
460 x 170 x 310	25	20	4.1		100
460 x 170 x 310	25	20	3.8		101
470 x 195 x 360	33	20	4.9		102

86320

## Tool bag TOP-LINE Allround CP-7 (empty)

## PARAT

## Design

- Calf leather
- Black
- Fold-out front panel
- Ergonomic handle with cushioned recessed handle and sturdy metal handrail
- Ratchet locks
- Ring caps
- Glide runners

- Base shell made of zinc-plated sheet steel
- Keep-safe compartment
- Fixed middle wall
- Variable plug-in system CP-7 with tool holders for tools from 11, 15 to 26 mm Ø
- Pocket for small parts

Internal dimensions mm	Volume approx. litres	Weight approx. kg	86320	...
415 x 165 x 275	19	3.3		101



86320



86321

## Tool bag TOP-LINE KingSize CP-7 (empty)

**PARAT**

## Design

- Made from extra-thick calf leather
- Sidewalls and base shell made of extremely resilient, moisture-resistant, double-walled HDPE plastic
- Semi fold-out front panel with 1 CP-7 tool holder for tools up to Ø 26 mm

- Central panel with 2 CP-7 tool holders for tools up to Ø 11 mm and Ø 15 mm
- Semi fold-out rear panel with 1 CP-7 tool holder for tools up to Ø 15 mm
- Grip hole
- Ratchet locks
- Ring caps



86321

Internal dimensions mm	Volume approx. litres	Weight approx. kg	86321	...
460 x 210 x 340	33	4.5		101

86323

## Tool bags TOP-LINE (empty)

**PARAT**

86323 101

## TOP-LINE Mini

## Design

- Calf leather
- Black
- Bag section with aluminium corner reinforcement
- Key lock
- Glide runners
- Adjustable carry strap
- Front, back and central panels with 17 tool compartments
- Transparent keep-safe compartment in cover

86323 102

## TOP-LINE PARALOCK

## Design

- Made from extra-thick calf leather
- Black
- Con-Pearl®
- Polypropylene sidewalls
- Front, back and central panels with 17 tool compartments
- Transparent keep-safe compartment in cover
- Glide runners
- Adjustable carry strap
- **Practical magnetic closure**
- Bag section with aluminium corner reinforcement

Practical  
magnetic closure


86323 101



86323 102

Internal dimensions mm	Volume approx. litres	Weight approx. kg	86323	...
220 x 140 x 250	8	1.2		101
230 x 140 x 300	10	1.5		102

86330

## Drawer case TOP-LINE KingSize Organize (empty)

**PARAT**

## Design

- Made from extra-thick calf leather
- Black
- Con-Pearl®
- Fold-out front panel
- Rear panel with 1 CP-7 tool holder for tools up to Ø 15 mm
- 90 mm intermediate compartment behind drawers
- Drawer tray with 5 pieces

- Carry insert
- Compartments for small parts
- Padded handle
- PARAT ratchet locks
- Aluminium corners

## Note:

Accessories for internal drawer division available on request.

Internal dimensions mm	Volume approx. litres	Weight approx. kg	86330	...
410 x 220 x 310	28	4.9		201



86330

86340

## Tool bag TOP-LINE Plus CP-7 (empty)

**PARAT**

## Design

- Made from extra-thick calf leather
- Black
- Con-Pearl®
- Semi fold-out front and back panels each with 8 tool compartments

- Middle wall with 1 CP-7 tool holder, Ø 11 mm
- 1 CP-7 tool holder, Ø 26 mm
- Grip hole
- Carry handle
- Ratchet locks

Internal dimensions mm	Volume approx. litres	Weight approx. kg	86340	...
420 x 185 x 315	24	3.1		100



86340

**86350****Tool wallet (empty)****Design**

- Material: synthetic leather
- Folds up completely
- 17 tool compartments
- 3 rubber band loops

- 1 extra large retaining lock
- Ergonomic handle

**86350**

Internal dimensions mm	Weight approx. g	86350	...
320 x 75 x 305	900	201	

**86358****Tool bag NEW CLASSIC KingSize Plus (empty)****PARAT****Design**

- Calf leather
- Black
- Sidewalls and base shell made of shock-resistant and moisture-resistant HDPE plastic
- Semi fold-out rear panel with 9 fixed loops
- Fixed middle panel with 19 fixed loops
- Semi fold-out rear panel with 11 fixed loops

- Sidewalls with 4 loops
- Strap for spirit level in lid
- Front pocket
- Carry handle
- PARAT key locks
- 2 press locks
- Ring caps
- Bag section with aluminium corner reinforcement

**86358**

Internal dimensions mm	Volume approx. litres	Weight approx. kg	86358	...
460 x 210 x 340	33	4.6	101	

**86360****Tool bag NEW CLASSIC Allround (empty)****PARAT****Design**

- Calf leather
- Sidewalls and base shell made of HDPE
- Black
- Grained
- Semi-fold-out front panel with 11 adjustable loops
- Rear panel with 9 fixed straps

- Front pocket
- Ring caps
- PARAT key locks
- Bag section with aluminium corner reinforcement

**86360**

Internal dimensions mm	Volume approx. litres	Weight approx. kg	86360	...
420 x 160 x 250	17	2.5	101	

**86325****Tool bag NEW CLASSIC Plus (empty)****PARAT****Design**

- Calf leather
- Black
- Semi fold-out front panel with 8 adjustable loops
- 1 small parts bag
- 1 tool compartment

- Middle panel can be removed, with 11 loops
- 1 keep-safe compartment
- Rear panel with 9 fixed straps
- Base shell made of zinc-plated sheet steel
- Key locks

**86325**

Internal dimensions mm	Volume approx. litres	Weight approx. kg	86325	...
400 x 140 x 280	16	2.9	101	

**86361****Tool bags NEW CLASSIC (empty)****PARAT****Design**

- Calf leather
- Black
- With key locks
- Glide runners
- Without internal divisions

**86361 101****86361 102**

Internal dimensions mm	Volume approx. litres	Weight approx. kg	86361	...
360 x 110 x 170	7	0.6	101	
390 x 170 x 230	15	1.3	102	

86364

### Pilot case PARADOC Businesscase

**PARAT**

#### Design

- Rollable
- Made from high-quality cowhide
- Black
- 1 padded notebook compartment

- 1 front pocket
- Lid has 2 compartments for business cards and
- 2 loops for pens
- Combination locks, two-tone
- Grip hole



86364

Internal dimensions mm	Volume approx. litres	Weight approx. kg	86364	...
425 x 180 x 335	26	5.4	102	

86366

### Carry strap

**PARAT**

#### Design

- Made of polyester

- Black
- Adjustable, with 2 snap hooks
- Shoulder protection



86366

Dimensions mm	Weight approx. g	86366	...
1120 x 20	120	101	

86367

### Ring cap set

**PARAT**

#### Design

- Made of cowhide, black



86367

Dimensions mm	Weight approx. g	86367	...
50 x 40	40	101	

86374

### Tool roller case

#### Design

- Tool case made of HDPE plastic
- Convenient transport thanks to large, smooth transport rollers and locking telescopic handle
- 2 tool pallets with storage pockets
- One pallet is one-sided, while the other can be equipped on both sides
- 1 document compartment
- 2 TSA locks including key

86374 101

#### Design

- Double-walled
- Soft handle with retention spring
- 2 boxes for small parts
- Base area with adjustable compartments



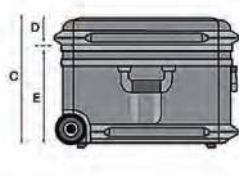
86374 101

86374 105

86374 105

#### Design

- 2 soft handles with retention spring
- 3 boxes for small parts
- Internal base tray with precut foam



Dimensions A x B x C x D x E mm	Load capacity max. kg	Weight kg	86374	...
453 x 345 x 185 x 75 x 110	30	7.5	101	
470 x 390 x 300 x 94 x 203	40	8.0	105	

**Design**

- Tool case made of polypropylene with smooth rollers
- Durable, impact-resistant and temperature-resistant
- **Telescopic handle on rear side can be extended up to max. 990 mm**
- The drawers are secured by a front flap, and the cover closes the upper compartment
- Both areas are secured using 2 catch fasteners
- These can be closed using an integrated central lock
- An additional padlock can be fitted
- The tool case is equipped with 2 side handles

**Note:**

Padlocks, see art. no. 86929 ff.

**86377 101****Equipped:**

- Drawer H 30 mm: with precut foam
- Drawer H 60 mm: with precut foam
- Drawer H 60 mm: with removable small parts boxes
- Drawer H 95 mm: empty
- The cover has 5 small parts containers:
  - 2 x with 6 compartments
  - 1 x with 10 compartments
  - 2 x with 13 compartments

**86377 102****Unequipped:**

- Drawer H 30 mm: empty
- Drawer H 60 mm: empty
- Drawer H 60 mm: empty
- Drawer H 95 mm: empty

**Options:**

Available with different cover compartments (tool insert panels)



**Drawer H 30 mm**  
With precut foam  
(Supplied without tools)



**Drawer H 60 mm**  
With small parts boxes  
(Delivery without contents)

**86377 101**

**Small parts container**  
(Delivery without contents)

H 30 mm

H 60 mm

H 60 mm

H 95 mm

**86377 102**

Customised label section



Device for fitting a padlock

Central lock secures cover and bottom compartments

Front flap fasteners

H 30 mm

H 60 mm

H 60 mm

H 95 mm

Type	Design	External dimensions mm	Weight kg	86377	...
<b>A11-KT01</b>	equipped	580 x 370 x 470	14.00		<b>101</b>
<b>A11-KT02</b>	unequipped	580 x 370 x 470	13.35		<b>102</b>



86368

Tool roller case CLASSIC (empty)

**PARAT** **Design**

- Case shells made of impact-resistant X-ABS plastic
- Black
- Suitable for flying
- Tool panels made of Con-Pearl® (high resistance against humidity, high scratch resistance)
- Double aluminium frame
- Barrel locks
- Ratchet hinges
- Glide runners
- Lockable cover holder
- 4 x telescopic drawers, 1150 mm long
- Large mounted, rubberised runners

**86368 101****CLASSIC KingSize Roll****Design**

- 1 tool panel with 25 tool compartments and
- 1 x keep-safe compartment 400 mm
- 1 tool panel with 10 tool compartments
- 1 cover panel with 15 tool compartments and
- 1 x keep-safe compartment 400 mm
- 1 document compartment

**86368 103****CLASSIC KingSize Roll CP-7****Design**

- 1 tool panel with CP-7 tool holders up to Ø 11 mm
- 1 tool panel, 2-sided, with CP-7 tool holders up to Ø 11 mm and up to Ø 15 mm
- 1 cover panel with CP-7 tool holders Ø 26 mm
- 1 document compartment with 2 pockets for business cards and 2 pen holder loops
- 1 base shell with cover panel, height 88 mm, freely dividable

**Scope of delivery**

- 2 keys

For dividing base shells individually:

- 1 lengthwise divider
- 3 crosswise dividers

**86368 106****CLASSIC KingSize Plus Roll****Design**

- 1 tool panel with 31 tool compartments
- 1 tool panel with 12 tool compartments
- 1 cover panel with 19 tool compartments and
- 1 keep-safe compartment 530 mm
- 1 base shell with
- 1 dividable compartment 540 x 88 (63) x 223 mm
- 1 fixed compartment 540 x 57 x 140 mm
- 1 strap for spirit level
- 1 document compartment in lid

**86368 107****CLASSIC KingSize Plus Roll CP-7****Design**

- 2 tool panels and 1 cover panel with
- 2 CP-7 tool holders, Ø 26 mm
- 2 CP-7 tool holders, Ø 15 mm
- 1 CP-7 tool holder, Ø 11 mm
- 4 tool straps and
- 2 straps for spirit level
- 1 document compartment in lid
- 1 lockable cover holder
- 1 base shell with
- 1 dividable compartment 540 x 88 (63) x 223 mm
- 1 fixed compartment 540 x 63 x 137 mm

**86368 101****86368 103****86368 106****86368 107**

Internal dimensions mm	Volume approx. litres	Weight approx. kg	86368	...
470 x 200 x 360	35	7.4		101
470 x 200 x 360	35	7.8		103
575 x 220 x 425	54	9.4		106
575 x 220 x 425	54	9.7		107



**KNIPEX****86376 200****Tool case Big Twin****Design**

- Sturdy design, made of ABS material, black
- Continuous aluminium frame
- Fixed, stable middle panel with double-sided mounting, with a range of storage options using elastic loops and 12 small pockets
- Ergonomic handle
- Metal hinges
- Can be opened on one or both sides, base and cover can be opened separately
- Free-standing in all opening positions due to cover holder with hinges fixed on both sides and lockable at 45° and 90°
- 3-digit combination lock and 2 barrel locks made of metal for fixing the lid
- 2 barrel locks made of metal for fixing the base
- Removable document compartment and removable tool panels made of dirt-repellent PP twin-wall sheets with red piping, can be equipped on one side, with 13 tool pockets
- Base shell dividable using flexible inserts, cover panel with 6 large tool pockets, can be fixed using press stud
- Marking area for customisation

86376 200



86376 201

**86376 201****Tool roller case BIG Twin-Move****Design**

- With integrated rollers and telescopic handle
- Sturdy design, made of ABS material, black
- Continuous aluminium frame
- Fixed, stable middle panel can be equipped on both sides, with a range of storage options using elastic loops and 12 small pockets
- Pull-out handle embedded in base as well as two external, smooth skater rollers
- Can be opened on one or both sides (V-shape)
- The base and cover can be partially or fully opened separately
- Free-standing in all opening positions
- Special runners protect the floor and provide stable support
- Lockable
- Removable document compartment and removable tool panel with 13 tool pockets
- Base shell, height 60 mm, can be divided flexibly using dividers
- Tool panel acts as a cover panel with 13 tool pockets



Factory equipment

	External dimensions W x H x D mm	Internal dimensions W x H x D mm	Load capacity up to kg	Weight kg	86376	...
Tool case BIG Twin	520 x 300 x 410	490 x 200 x 370	30	7.8	200	NEW
Tool roller case BIG Twin-Move	510 x 270 x 410	480 x 210 x 370	30	8.6	201	

86381

## Tool case Basic/Tool roller case Basic Move

**KNIPEX**
**Design**

- Sturdy design, made of ABS material, black
- Continuous aluminium frame
- 3-digit combination lock and 2 metal barrel locks for fixing the lid
- Stable, ergonomic carry handle
- Metal hinges
- Document compartment in lid
- Base shell can be divided further using inserts
- Cover panel with 12 large tool pockets and 1 flat compartment, can be fixed using press stud
- Label area with 2 stickers for customised marking

86381 101

**Tool case Basic**
**Design**

- D-rings for attaching the enclosed carry strap
- Removable tool panel made of dirt-repellent PP twin-wall sheets with red piping in cover, with 9 tool pockets and 1 elastic strap on the cover side and 10 narrow tool pockets and 1 large tool pocket on the base side

86381 102

**Tool roller case Basic Move**
**Design**

- Pull-out handle embedded in base
- 2 external, smooth-running skater rollers
- 2 removable tool panels made of dirt-repellent PP twin wall sheets with red piping in the cover
- 1. Tool panel with 10 tool pockets and 1 elastic loop on the cover side and 10 narrow and 1 large tool pocket on the base side
- 2. Tool panel with 10 narrow tool pockets and 1 elastic loop on the base side and 1 document compartment on the cover side


**NEW**


	External dimensions W x H x D mm	Internal dimensions W x H x D mm	Load capacity kg	Weight kg	86381	...
Tool case Basic	465 x 210 x 370	440 x 180 x 350	15	5.1	101	
Tool roller case Basic Move	515 x 280 x 430	480 x 200 x 350	20	6.8	102	

86383

## Professional tool bags (empty)

**Design**

- Continuous metal rail at top
- Foam rubber carry handle
- Bag can be covered completely
- Recessed handle
- Adjustable shoulder strap with shoulder pad
- Sturdy plastic sliding rails
- Colour: black

86383 201

**Design**
**External:**

- 1 large, lockable insert pocket
- 4 medium, lockable insert pockets, including 2 with small parts box
- 2 hook and loop fastenings for securing spirit level, etc.

**Internal:**

- 8 small tool compartments
- 9 medium tool compartments
- 1 large tool compartment

86383 202

**Design**
**External:**

- 2 large, lockable insert pockets
- 4 very large, lockable insert pockets
- 2 hook and loop fastenings for securing spirit level, etc.

**Internal:**

- 18 small tool compartments
- 13 medium tool compartments
- 5 large tool compartments

**NEW**


86383 201



86383 202

Internal dimensions mm	Weight approx. kg	86383	...
400 x 200 x 220	2.2	201	
570 x 255 x 270	3.0	202	

86375

## Tool boxes PROFI-LINE (empty)

**PARAT** **Design**

- Spacious, robust tool box made of impact-resistant plastic, polypropylene
- High-mounted, large-scale, anti-tilt, removable carry insert, splash-proof
- 1 small parts storage
- Quick-action fastenings made of plastic, can be secured with padlock (art. no. 86931 ff.)



External dimensions mm	Volume approx. litres	Weight kg	86375	...
445 x 230 x 230	16	1.8		201
480 x 255 x 260	21	2.4		202
580 x 285 x 290	30	3.0		203

86385

## Technician's tool backpack

**Design**

2 front pockets:

**Lower front pocket:**

- Zip fastening for documents
- 2 large tool compartments
- 4 small tool compartments

**Upper front pocket:**

- Zip fastening for small tools
- 10 rubber band loops
- 2 tool compartments

**Main compartment:**

- Document tray
  - 2 hook and loop fastenings for fixing laptop or A4 folder
  - Large tool area (fold-out):
  - 16 tool compartments
  - 12 rubber band loops
  - Small parts holder
- Other equipment:**
- 2 side pockets
  - Tools not included in scope of delivery



Dimensions mm	Weight kg	Material	86385	...
420 x 350 x 210	2.3	Polytex		501

86386

## Tool rolls BASIC Roll-up Case (empty)

**PARAT** **Designs**

- Synthetic leather
- With tool compartments
- Buckle strap closure

Number of Tool compartments	External dimensions mm	Weight approx. g	86386	...
12	540 x 330	260		201
15	670 x 330	320		202
20	740 x 330	360		203



86388

## Tool rolls (empty)

**HHW****Design**

- Made of synthetic leather
- Black
- Green border



Number of tool compartments	External dimensions approx. mm	86388	...
6	300 x 290		302
7	165 x 160		303
8	440 x 280		304
8	740 x 240		305





## 86405 - 86406

## Assembly tool boxes

**ATORN®****Design**

Stable, strong sheet steel design, painted blue on all sides, fold-down tubular carry handle. Cover is particularly torsion-resistant due to overlapping edges and reinforcement bead. Continuous hinge with bore for padlock.

**Note:**

Padlocks, see art. no. 86931 ff.

86406



Dimensions L x W x H mm		86405	...	86406	...
430 x 200 x 150	3-part		101		
430 x 200 x 200	5-part				102
530 x 200 x 200	5-part				103
600 x 200 x 200	5-part				104

## 86408

## Roller box

**HHW****Design**

**The tool box on wheels.** Made of solid sheet steel with eco-friendly powder coating. **With extendable handle for travel.** Dimensions when folded out: 680 x 395 x 760 mm. Folded (without carry handle): 640 x 395 x 360 mm.

**Colour:** 2 colours, red/black.

**Applications**

The roller box offers plenty of advantages:

- Lightweight to push instead of heavy to carry.
- Can be set up and folded away with one hand.
- Easy to open without tilting.
- Your working materials are always within reach.
- Saves space when folded up.
- Ideal for mobile work in different locations.

86408



		86408	...
			101

## 86606

## Sheet steel assembly case

**Design**

Extremely stable and weather-resistant. Interior lining with fibreboards. With removable insert for small parts, inside compartment in cover, wide carry handles. **Fitting for padlock.**

(Padlocks, see art. no. 86931 ff.)

**Colour:** grey.

86606



Dimensions mm	Weight approx. kg	86606	...
690 x 360 x 310	15		101
830 x 440 x 340	20		102
910 x 530 x 430	25		103

## 86618

## Euro boxes (transport containers)



ZARGES

**Design**

- Made of high-strength, corrosion-resistant aluminium alloy
- Lid with stainless steel hinges and two straps
- Lid sealed against dust and water splashes
- Reinforcement beads

- Blue stacking corners made of impact-resistant plastic
- Spring-loaded handles with plastic coating
- Catch fasteners on front for installing lock or padlock

**Note:**

Accessories, see art. no. 86620.

86618



Internal dimensions L x W x H approx. mm	External dimensions L x W x H approx. mm	Volume approx. l	Weight approx. kg	86618	...
350 x 250 x 310	400 x 300 x 340	27	3.0		101
550 x 350 x 220	600 x 400 x 250	42	4.7		102
550 x 350 x 310	600 x 400 x 340	60	4.9		103
550 x 350 x 380	600 x 400 x 410	73	5.2		104
750 x 350 x 310	800 x 400 x 340	81	6.1		105
750 x 550 x 380	800 x 600 x 410	157	7.5		106
750 x 550 x 580	800 x 600 x 610	239	8.9		107
1150 x 250 x 220	1200 x 300 x 250	63	6.3		109
1150 x 750 x 480	1200 x 800 x 510	414	13.0		108

## 86615

## Light metal transport and storage container



ZARGES

**Design**

- Corrosion-resistant
- Dust- and splash-proof
- With continuous, foam cover seal

**Advantage**

- Easy and comfortable to carry
- Stable and resilient
- Easy to secure with lock

**Applications**

Tool box, assembly case, transport container, etc.

**Quality**

Made of high-quality light metal.

**Note:**

Accessories, see art. no. 86620.

Internal dimensions L x W x H approx. mm	External dimensions L x W x H approx. mm	Volume approx. l	Weight approx. kg	86615	...
550 x 350 x 220	600 x 400 x 240	42	4.0		101
750 x 350 x 310	800 x 400 x 330	81	5.5		103



86615 101



86615 103

## 86619 - 86620

## Accessories, see art. no. 86615–86618



ZARGES

**Applications**

For art no. 86615–86618.

**86619 101****Add-on trolley**

- Telescopic trolley
- Simple self-installation
- Handle can be pulled out and locked
- Ideal for boxes with an exterior length of 500–800 mm
- Smooth chassis, Ø 54 mm
- Load: 30 kg

**86619 102****Expansion set for trolley**

- Expansion set for fitting trolley on other boxes

**86619 103-104****Cover pockets**

- Representative cover pockets made of black nylon fabric for self-installation
- Ideal for tablet PCs, cables, small parts or documents
- Protects parts and keeps the box organised
- The pocket can easily be removed

**86620 101****Small parts box**

- With 21 fillable compartments made from polypropylene
- For art. no. 86615 101+103, 86618 102–105

**86620 102****Foam block set**

- Made of soft foam
- For delicate parts
- Adjusts shape without the need for tools
- Contains 1 cover panel (30 mm), 1 base panel (10 mm), 2 panels (30 mm), 2 panels (60 mm)
- For art. no. 86615 101, 86618 101–104

**86620 104****Adjustable partitioning system**

- Consisting of a divider with two hole-spacing bars
- For art. no. 86615 103, 86618 103–105

**86620 109****Barrel lock set**

- Simultaneous locking, only in set
- Both locks can be opened with just one key
- Until autumn 2008

**86620 105****Barrel lock set**

- Simultaneous locking, only in set
- Both locks can be opened with just one key
- From autumn 2008

**86620 110****Barrel lock series**

- Complete series, simultaneous locking
- Each key can open several boxes
- Until autumn 2008

**86620 106****Barrel lock series**

- Complete series, simultaneous locking
- Each key can open several boxes
- From autumn 2008

**86620 107-108****Dolly trolley F 150**

- Aluminium frame
- With 2 steering and 2 fixed castors, Ø 125 mm, 40 mm wide, rubber wheels (traceless), mounted on roller bearings

**86620 107**

- For art. no. 86615 101, 86618 102–104

**86620 108**

- For art. no. 86618 106+107

86619 101



86619 102



86619 103



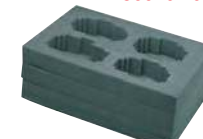
86619 104



86620 101



86620 102



86620 104



86620 105-106



86620 109-110



86620 107-108



Name	Size mm	Additional load max. kg	For locks	86619	...	86620	...
Add-on trolley	-	-	-		101		
Expansion set	-	-	-		102		
Cover pocket, large	420 x 260 x 40	2	-		103		
Cover pocket, small	260 x 150 x 40	1	-		104		
Small parts box	430 x 330 x 60	-	-				101
Foam block set	550 x 350 x 220	-	-				102
Partitioning system	346 x 305	-	-				104
Barrel lock set	-	-	until autumn 2008				109
Barrel lock set	-	-	from autumn 2008				105
Barrel lock series	-	-	until autumn 2008				110
Barrel lock series	-	-	from autumn 2008				106
Dolly trolley W 150	600 x 400	-	-				107
Dolly trolley W 150	800 x 600	-	-				108

## 86901 - 86902

## Assortment boxes Assorter



## Design

## Raaco Assorter:

## Maximum organisation in the smallest place

- Assorter is a series of sturdy assortment boxes than can easily be taken everywhere
- It includes designs with different heights, widths, depths and compartments
- The practical compartment division of the boxes enables well sorted, compact storage of the contents
- The base and lid are made of sturdy polypropylene plastic. Fitted with a transparent lid so that content can easily be identified
- On the front, the Assorters are equipped with one or two sliding closures that keep the cover securely closed, while the back has sturdy external hinges
- The Assorter is available in two versions – with fixed compartments for elementary storage requirements and with removable inserts for improved flexibility
- The larger Assorters can be transported easily when equipped with the matching handle
- The larger Assorter models also have U-profiles inside the cover which help keep the content in place during transport

## 86901 101

## - With 7 differently sized, fixed compartments

- Arrangement (internal dimensions H x W x D):
- 1 compartment 24 x 35 x 158 mm
- 2 compartments 24 x 35 x 78 mm
- 4 compartments 24 x 35 x 38 mm

## 86901 102

## - With 12 equal-sized, fixed compartments

- Arrangement (internal dimensions H x W x D):
- 12 compartments 24 x 35 x 38 mm

## 86901 103

## - With 9 differently sized, fixed compartments

- Arrangement (internal dimensions H x W x D):
- 1 compartment 33 x 51 x 220 mm
- 2 compartments 33 x 105 x 35 mm
- 2 compartments 33 x 51 x 72 mm
- 4 compartments 33 x 51 x 35 mm

## 86901 104

## - With 18 equal-sized, fixed compartments

- Arrangement (internal dimensions H x W x D):
- 18 compartments 33 x 51 x 35 mm

## 86901 105

## - With 15 differently sized, fixed compartments

- Arrangement (internal dimensions H x W x D):
- 8 compartments 46 x 54 x 38 mm
- 1 compartments 46 x 166 x 78 mm
- 1 compartments 46 x 54 x 238 mm
- 2 compartments 46 x 54 x 118 mm
- 3 compartments 46 x 54 x 78 mm

## 86901 106

## - With 32 equal-sized, fixed compartments

- Arrangement (internal dimensions H x W x D):
- 32 compartments 46 x 54 x 38 mm

## 86902 101

## - With 15 removable inserts of different sizes

- Arrangement:
- 5 units insert type 55 A9-1 (H x W x D 47 x 39 x 55 mm)
- 2 units insert type 55 A9-2 (H x W x D 47 x 39 x 109 mm)
- 1 unit insert type 55 A9-3 (H x W x D 47 x 39 x 163 mm)
- 1 unit insert type 55 A9-4 (H x W x D 47 x 39 x 218 mm)
- 4 units insert type 55 A8-1 (H x W x D 47 x 55 x 79 mm)
- 1 unit insert type 55 A8-2 (H x W x D 47 x 55 x 157 mm)
- 1 unit insert type 55 A7-1 (H x W x D 47 x 79 x 109 mm)

## 86902 102

## - With 17 removable inserts of different sizes

- Arrangement:
- 4 units insert type 55 A9-1 (H x W x D 47 x 39 x 55 mm)
- 4 units insert type 55 A9-2 (H x W x D 47 x 39 x 109 mm)
- 8 units insert type 55 A8-1 (H x W x D 47 x 55 x 79 mm)
- 1 unit insert type 55 A7-1 (H x W x D 47 x 79 x 109 mm)

## 86901 101



## 86901 102



## 86901 103



## 86901 104



## 86901 105



## 86901 106



## 86902 101



## 86902 102



Model	W x H x D mm	Compartments/Inserts	Locks	Handle	U-profile	86901	...	86902	...
Assorter 6-7	175 x 32 x 143	7 compartments in 3 sizes	1	-	-		101		
Assorter 6-12	175 x 32 x 143	12 compartments of equal size	1	-	-		102		
Assorter 5-9	240 x 43 x 195	9 compartments in 4 sizes	1	-	-		103		
Assorter 5-18	240 x 43 x 195	18 compartments of equal size	1	-	-		104		
Assorter 4-15	338 x 57 x 260	15 compartments in 5 sizes	2	-	x		105		
Assorter 4-32	338 x 57 x 260	32 compartments of equal size	2	-	x		106		
Assorter 55 4x8-15	338 x 57 x 261	15 compartments in 7 sizes	2	x	x				101
Assorter 55 4x8-17	338 x 57 x 261	17 compartments in 4 sizes	2	x	x				102





**Sortimo**  
 Intelligente Mobilität

86903 301-304

**Design**

- Sturdy and durable
- Clear overview of small parts at all times
- Integrated carry handle
- Individual filling optimises work processes

**86903 401****Design**

- Stackable using innovative click system
- Can be combined with i-BOXXes and LS drawers
- Compatible with complete L-BOXX system
- Content can be changed quickly
- **Organisation system can be expanded flexibly**

**86903 402****Design**

- Stackable using innovative click system
- Can be combined with i-BOXXes and LS drawers
- Compatible with complete L-BOXX system
- Content can be changed quickly

**86903 403****Design**

- Stackable using innovative click system
- Can be adapted to industry-specific requirements
- Can be integrated into all transport solutions from Sortimo
- Professional appearance with customer
- **Individual inserts with drawer function**

**86903 404****Design**

- Stackable using innovative click system
- Can be adapted to industry-specific requirements
- Can be integrated into all transport solutions from Sortimo
- Professional appearance with customer

**NEW**

86903 301



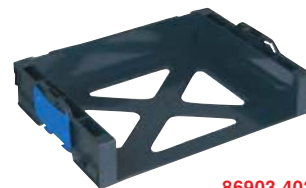
86903 303



86903 304



86903 401



86903 402



86903 403



86903 404



Model	Compartments Unit	W x H x D mm	86903	...
i-BOXX 72 G	10	367 x 72 x 316		301
i-BOXX 72 G	11	367 x 72 x 316		303
i-BOXX 72 G	26	367 x 72 x 316		304

Model	W x H x D mm	86903	...
i-Rack G, i-BOXX Rack Active	442 x 100 x 342		401
i-Rack G, i-BOXX Rack 3-way (empty)	442 x 304 x 342		402
LS-BOXX 306 G (empty)	442 x 322 x 357		403
LS-BOXX 306 G incl. 2 x i-BOXX72 IBH3	442 x 322 x 357		404

## Assortment cases | Small parts storage

86904

### Assortment case T-BOXX

**Sortimo**  
Intelligente Mobilität

#### Design

- Clear overview of small parts at all times
- Comfortable to carry
- Long durability saves costs
- Flexible due to removal of individual inset boxes

**NEW**



86904 201



86904 202



86904 203



86904 205

Model	W x H x D mm	Compartments/Inserts	86904	...
T-BOXX G	440 x 80 x 350	23 compartments in 4 sizes		201
T-BOXX G	440 x 80 x 350	16 compartments in 6 sizes		202
T-BOXX G	440 x 80 x 350	12 compartments of equal size		203
T-BOXX G	440 x 80 x 350	48 compartments of equal size		205

86905

### Small parts storage

**Sortimo**  
Intelligente Mobilität

#### Design

- Makes work easier thanks to one-handed operation
- Interior can be customised
- Can be integrated into all transport solutions from Sortimo
- Foam insert minimises annoying rattling noises
- Case colour: light blue

**NEW**



86905 201



86905 202



86905 203



86905 204



86905 205

Model	W x H x D mm	Compartments/Inserts	86905	...
Metal case KM 321	440 x 66 x 330	23 compartments in 4 sizes		201
Metal case KM 321	440 x 66 x 330	8 compartments of equal size		202
Metal case KM 321	440 x 66 x 330	12 compartments of equal size		203
Metal case KM 321	440 x 66 x 330	24 compartments of equal size		204
Metal case KM 321	440 x 66 x 330	48 compartments of equal size		205

**Sortimo**  
Intelligente Mobilität

**86906 301-302****L-BOXX 102 G4/136 G4, empty**

- Innovative click system with one-handed operation
- Access to content even when clicked in place
- Quickly secured with a lock, also when using several BOXXes together
- Flexibility due to modular, dividable interior
- Can be customised using labels with colour code
- Case colour: cool grey

**86906 303****L-BOXX 238 G, empty**

- Stackable using innovative click system
- Professional appearance with customer
- Comfortable to carry
- **Can be integrated into all transport solutions from Sortimo**
- Can be customised using labels with colour code
- Case colour: cool grey

**86906 304****L-BOXX 374 G, empty**

- Stackable using innovative click system
- Professional appearance with customer
- Comfortable to carry
- **Can be integrated into vehicle interior equipment**
- Can be customised using labels with colour code
- Case colour: cool grey

**86906 305****Labelling set**

- Individual labelling on outside of BOXX, case and label clip SR
- Provides a quick overview of contents
- Sortimo colour code for visual identification
- Saves time through better overview and provides quicker access to tools or small parts
- Download the free labelling template at <https://www.sortimo.de/labels>

**86906 106****Cover inlay**

- Made from hard foam
- Protects content of inset boxes against unwanted mixing during transport

**86906 307****Non-slip mat**

- Suitable for the L-BOXX 102 G4 and L-BOXX 136 G4
- Protects content and BOXX from damage
- Prevents annoying rattling noises when travelling

**86906 308****Document card****86906 109****Tool card**

- Mounted in the lid of the L-BOXX
- With elastic loops and pockets for safe storage of tools

**86906 110****L-BOXX roller**

- The practical mobile platform for all L-BOXXes, LS-BoXXes and the i-BOXX Rack
- BOXXes can be quickly and easily fixed onto the L-BOXX roller and pushed to the desired destination as a single unit
- Made of plastic
- With 4 steering rollers, including 2 with locking devices
- Load capacity up to 100 kg
- Colour: grey-white

**Advantage:**

- BOXXes can be transported quickly and safely

**86906 401****L-BOXX 102 incl. inset box set H3**

- Incl. inset box set, 12 units H63 and cover insert
- 12 compartments in 6 sizes
- Innovative click system with one-handed operation
- Access to content even when clicked in place
- Quickly secured with a lock, also when using several BOXXes together
- Can be customised using labels with colour code

86906 301



86906 302



86906 303



86906 304



86906 401



86906 305



86906 106



86906 307



86906 109



86906 110



Model	W x H x D mm	86906	...
L-BOXX 102 G4, empty	444 x 118 x 360	301	NEW
L-BOXX 136 G4, empty	444 x 152 x 360	302	NEW
L-BOXX 238 G, empty	442 x 357 x 253	303	NEW
L-BOXX 374 G, empty	442 x 389 x 357	304	NEW
Labelling set	approx. 210 x 297 (A4)	305	NEW
Cover insert	405 x 22 x 321	106	
Non-slip mat for L-BOXX 102 G4/136 G4	416 x 2 x 307	307	NEW
Document card	416 x 2 x 307	308	NEW
Tool card	380 x 20 x 308	109	
L-BOXX roller	650 x 150 x 510	110	
L-BOXX 102 incl. inset box set H3	444 x 118 x 360	401	NEW





### WorkMo = MAXIMUM FLEXIBILITY

Drawers provide perfect storage for tools and consumables for daily needs. They provide ample storage space and keep things organised. The drawer panels are made of impact-resistant plastic and are therefore able to handle day-to-day use.

### Organise

WorkMo consists of portable modules for tool storage. The interior elements can be freely arranged according to your individual needs with drawers, shelves, BoXXes or case shelves.

### Transport

Using rollers, you can quickly transform your WorkMo components into a mobile workshop and transport the tools quickly from A to B.

Even loading into a vehicle is no problem, as the components can be disassembled quickly.

### Ergonomic work

The stackable modules can be put assembled into one uniform work station on the construction site. With holders for accessories, a multiple outlet socket and worktop, the transport and organisation system transforms into a functional workplace. Different module combinations enable you to create your own highly flexible workplace.

### Design

- Aluminium, plastic
- Rounded plastic edges provide shock and scratch protection
- Can be expanded at any time
- Compatible with the Sortimo BOXXes and luggage range

### Applications

- Combines transport, organisation and work
- Sturdy handling

81783 101



**81783 101**  
**WorkMo WO 24-500 SBL6**  
- With 4 drawers  
- W x H x D 526 x 506 x 396 mm  
19 kg  
- Drawer internal dimensions:  
(W x H x D) 418 x 89 x 314 mm

81783 102



**81783 102**  
**WorkMo WO 24-500 STB**  
- Empty, for storing 4 T-BOXEs (art. no. 86904) or 4 small part storage units (art. no. 86905)  
- W x H x D 526 x 506 x 396 mm, 7.3 kg

81783 103



**81783 103**  
**WorkMo WO 24-500 4KS**  
- Empty, with case arms for storing 4 small part storage units (art. no. 86905)  
- W x H x D 526 x 506 x 396 mm, 16.8 kg

81783 104



**81783 104**  
**WorkMo WO 24-500 3BB**  
- Empty, for storing 3 L-BOXEs 102 or 1 L-BOX 136 and 2 L-BOXEs 102 (art. no. 86906)  
- W x H x D 526 x 506 x 396 mm, 18.3 kg

Type		W x H x D mm	Weight kg	81783	...
WorkMo WO 24-500 SBL6	Module with 4 drawers	526 x 506 x 396	19.0		101
WorkMo WO 24-500 STB	Module, empty	526 x 506 x 396	7.3		102
WorkMo WO 24-500 4KS	Module, empty	526 x 506 x 396	16.8		103
WorkMo WO 24-500 3BB	Module, empty	526 x 506 x 396	18.3		104

81783 201



**81783 201+202**

The matching **WorkMo worktops and workbenches** for use on top of the modules provide the perfect workstation for your workplace. The worktops and workbenches can be firmly connected to the WorkMo using a ratchet system and form a fixed working base with high stability. If required, the lock can be released again with one hand.

81783 402



**81783 201**

### WO AP 24 small worktop

- For WorkMo modules in 500 width (art. no. 81783)
- W x H x D 517 x 426 x 41 mm

**81783 202**

### WO AP-T large workbench

- Suitable for various WorkMo modules
- While folded, the workbench can be placed in the transport rail (art. no. 81783 402) on the lower module
- W x H x D 1451 x 648 x 133 mm

**81783 402**

### WO TS AP-T transport rail

- For workbench art. no. 81783 202
- Transport your workplace easily and flexibly
- The transport rail lets you conveniently fix the workbench art. no. 81783 202 to the WorkMo
- This provides mobility and flexibility at any time with your complete workstation

**81783 401**

### EZ PS single lashing point

- For securing WorkMo workbenches

81783 401



Type		W x H x D mm	81783	...
WO AP 24	Worktop	517 x 426 x 41		201
WO AP-T	Workbench (w/o fig.)	1451 x 648 x 133		202
WO TS AP-T	Transport rail	-		402
EZ PS	Single lashing point	-		401

Continued

Continued

**Sortimo**  
 Intelligente Mobilität
**81783 302****WO RK VPE2 roller skids**

- For WorkMo modules art. no. 81783 101–104
- With the roller skids, the WorkMo becomes a fully-fledged workshop trolley
- The roller skids are screwed onto the WorkMo and make it permanently mobile
- Two of the steering rollers can be locked
- Load capacity up to 150 kg



81783 302

**81783 301****WO RO 24 rolling platform**

- For WorkMo modules in 500 width (art. no. 81783)
- The roller made of high-quality beech multiplex makes the WorkMo completely mobile
- The fully rubberised rollers are sturdy and guarantee smooth running
- Easily connected to the WorkMo using the folding lever
- The flat surface also allows you to transport other materials

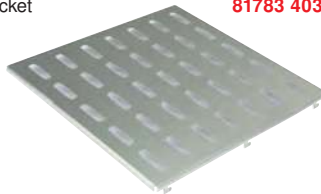
81783 301

81783 400

**81783 400****WO WH 20-3 stationary storage**

- The WorkMo modules (art. no. 81783) can be used as a stationary workshop facility together with this wall bracket

81783 403

**81783 403****WO SBAL 500 perforated aluminium sheet**

- Clamp your tool to the sides of the WorkMo
- Have the tool to hand at all times and don't waste time looking for it
- Only for Sortimo original accessories!

**81783 404****WO SV 04-7 power supply**

- Incl. mounting plate and cable hooks
- For attachment to the WorkMo module art. no. 81783

**Advantages:**

- Power supply directly on site
- Sturdy and splash-proof
- With flip cover
- Enables time-saving and efficient work
- Approved in accordance with BGV A3



81783 404

**Storage compartments**

Storage compartments are the ideal storage place for consumables, documents and tools.

You can screw the storage compartments onto the side of the WorkMo so that you always have your documents, cans, consumables or tools ready at hand.

**81783 405****AB 04-7KU storage compartment**

- Made of plastic
- With clamping strip
- W x H x D 353 x 123 x 134 mm



81783 405

81783 406

**81783 406****AB 04-12K storage compartment for documents**

- Made of plastic
- W x H x D 356 x 204 x 89 mm



81783 407

**81783 407****AB G 04-7 large storage compartment**

- With lateral terminal block
- W x H x D 356 x 115 x 252 mm

**81783 408****ARM AB G 04-7 non-slip mat**

- For storage compartment art. no. 81783 407
- W x H x D 352 x 242 x 4 mm



81783 408

81783 409

**81783 409****WO ABLT 14-9 side table**

- For sidewall made of metal
- Incl. non-slip mat
- W x H x D 353 x 152 x 229 mm



81783 410

**81783 410****WKL 04-3 tool terminal block**

- The tool clamping strip is mounted onto the side of the WorkMo
- Tools sit firmly and stay secured even during transport
- W x H x D 355 x 48 x 33 mm

**81783 411****SKH 73 SWA**

- Spray can holder
- For WorkMo

81783 411

**81783 412****ZHL 04 hook strip**

- With 3 hooks
- For the storage of cables, hoses and clothing
- W x H x D 355 x 51 x 80 mm

81783 412

**81783 413****PSH RA 3.5 securing strap**

- Length: 3.5 m
- For securing the WorkMo modules (art. no. 81783) in a vehicle (ProSafe)

81783 413

**81783 414****PSH RA 6 securing strap**

- Length: 6 m
- For securing the WorkMo modules (art. no. 81783) in a vehicle (ProSafe)

81783 414

**81783 415****WO SSA1 screw set**

- For mounting WorkMo attachments art. no.

81783 404

81783 405

81783 406

81783 407

81783 409

81783 410

81783 412

Type		W x H x D mm	81783	...
WO RK VPE2	Roller skids	-	302	
WO RO 24	Rolling platform	-	301	
WO WH 20-3	Stationary storage	-	400	
WO SBAL 500	Perforated aluminium sheet	-	403	
WO SV 04-7	Power supply	-	404	
AB 04-7KU	Storage compartment	353 x 123 x 134	405	
AB 04-12K	Storage compartment for documents	356 x 204 x 89	406	
AB G 04-7	Large storage compartment	356 x 115 x 252	407	
ARM AB G 04-7	Non-slip mat	352 x 242 x 4	408	
WO ABLT 14-9	Side table	353 x 152 x 229	409	
WKL 04-3	Tool clamping strip	355 x 48 x 33	410	
SKH 73 SWA	Spray can holder	-	411	
ZHL 04	Hook strip	355 x 51 x 80	412	
PSH RA 3.5	Securing strap length 3.5 m	-	413	
PSH RA 6	Securing strap length 6.0 m	-	414	
WO SSA1	Screw set (top fig.)	-	415	

## Padlocks

86935

### Brass padlocks



#### Design

Sturdy barrel lock. Solid brass body. Shackle hard as steel. Lock and key. Individually keyed.

Dimensions W x D x H mm	Shackle Ø mm	Clear shackle height mm	Clear shackle width mm	86935	...
29 x 13 x 46	5	16	14.3		101
39 x 13 x 61	6	22	20.0		102
48 x 14 x 71	7	26	25.0		103



86935

86931

### Padlocks



#### Design

Housing painted black. Zinc-plated shackle. Nickel-plated key with interlocks and 2 mandrel keys. Individually keyed.

Dimensions W x D x H mm	Shackle Ø mm	86931	...
40 x 15 x 35	6		202
50 x 19 x 41	7		203



86931

86936

### Brass padlocks



#### Design

High-precision reversible locking system with up to approx. 10,000 different locking options. Lock body made of solid brass. Internal parts made of corrosion-protected, high-quality materials. Double locking. Automatic locking. Hardened shackle. Precision pin cylinder with mushroom-head pins. Off-centre key profile for improved protection from manipulation.

86936 101

#### Design

Individually keyed.

86936 102

#### Design

Keyed alike.

Design	Dimensions W x D x H mm	Shackle Ø mm	86936	...
Individually keyed	40 x 15.5 x 61.5	7		101
Keyed alike	40 x 15.5 x 61.5	7		102



86936

86934

### Padlocks



#### Design

- Solid lock made of TITANIUM™ special aluminium
- Special steel shackle with NANO Protect™ coating for excellent corrosion protection
- Off-centre key profile for improved protection from manipulation
- Double U-locking
- Chrome-plated cylinder cores for additional corrosion protection
- Tulip-shaped key head

#### Applications

Securing moderate-value goods/items (chains, doors, gates, cabinets, lockers, tool boxes, cellar windows, sheds, etc.) or items with an above-average risk of theft.



86934 High shackle



86934

Design	Dimensions W x D x H mm	Shackle Ø mm	Clear shackle height mm	Clear shackle width mm	Number supplied Key	High Lock	Weight g	86934	...
Keyed alike	30 x 13 x 50	5	17	16	2	-	53		101
Keyed alike	30 x 13 x 93	5	60	16	2	x	65		102
Keyed alike	40 x 15 x 62	6	23	22	2	-	87		103
Keyed alike	40 x 15 x 79	6	40	22	2	x	96		104
Keyed alike	40 x 15 x 102	6	63	22	2	x	107		105
Individually keyed	30 x 13 x 50	5	17	16	2	-	53		201
Individually keyed	30 x 13 x 93	5	60	16	2	x	65		202
Individually keyed	40 x 15 x 62	6	23	22	2	-	87		203
Individually keyed	40 x 15 x 79	6	40	22	2	x	96		204
Individually keyed	40 x 15 x 102	6	63	22	2	x	107		205





**Design**

- Lock body made of lightweight, solid aluminium
- Double U-locking
- Internal parts made of stainless materials
- Hardened steel shackle
- Precision pin cylinder
- Off-centre key profile for improved protection from manipulation
- Plastic coating in different colours
- Can be locked automatically without using a key by pressing down on the shackle
- Incl. 2 keys
- Individual labelling possible on the back of the lock

**Applications**

Protection of medium-value assets/objects or where there is a moderate risk of theft.

Ideal for securing individual lockers and cabinets (e.g. in fitness centres), basement storage areas, tool boxes, etc.

86930



Colour	Dimensions W x D x H mm	Shackle Ø mm	Clear shackle height mm	Clear shackle width mm	Locking elements Pin pairs	86930	...
black	43 x 18 x 62	6.5	23	22	5		101
white	43 x 18 x 62	6.5	23	22	5		102
red	43 x 18 x 62	6.5	23	22	5		103
blue	43 x 18 x 62	6.5	23	22	5		104
yellow	43 x 18 x 62	6.5	23	22	5		105
purple	43 x 18 x 62	6.5	23	22	5		106

**Design**

- Stable die-cast zinc housing with steel shackle
- Individually adjustable, 3-digit code

**Applications**

Protection of smaller-value assets/objects or items with a low risk of theft.

Suitable for securing bags, suitcases, cases, cash boxes, lockers, etc.

86929



Colour	Size mm	Shackle Ø mm	Clear shackle height mm	Clear shackle width mm	86929	...
black	34	5	19.5	14.5		101
white	34	5	19.5	14.5		106

**Design**

Solid brass body. Shackle made of steel.  
With customisable numerical code.

**Applications**

For convenient operation e.g. schools, companies, securing luggage.

86937 101

86937 102



Dimensions W x D x H mm	Shackle Ø mm	86937	...
30.5 x 15 x 65	5		101
40.0 x 16 x 77	6		102

**Design**

- 100% weatherproof
- Made entirely of stainless material
- Shackle made of stainless steel
- Round shape plus narrow shackle opening impedes access using theft tools
- Additional saw protection

- Top quality welding seam
- Double locking
- Precision pin cylinder with mushroom head pins
- Individually keyed

86938



Dimensions W x D x H mm	Shackle Ø mm	86938	...
51 x 25.5 x 50	6.5		101
70 x 31.0 x 70	10.0		102

86932

## Brass padlocks INOX



### Design

Stainless steel. Brass shackle with double locking.  
Real pin cylinder. Quick closure by snapping in the shackle without putting in the key.  
2 keys. Individually keyed.

### Applications

Especially suitable for severe weather influences.  
Ideal for securing items on vehicles and boats.

86932 102

86932 101



Dimensions W x D x H mm	Shackle Ø mm	86932	...
32 x 16 x 45	5.0	101	
43 x 17 x 60	6.5	102	

86933

## Padlock Aqua Safe



### Design

Encapsulated lock body offers protection against water and dirt. Impact-resistant plastic casing for increased security and scratch protection. Special key hole covering protects the cylinder from dust and dirt. Solid brass lock body provides optimal corrosion protection. Precision pin cylinder made

from stainless materials. Shackle made from stainless steel, double locked. Stainless and resistant to seawater.

### Applications

Particularly suitable for extremely severe weather and environmental influences. Ideal for securing items on vehicles and boats.

86933



Dimensions W x D x H mm	Shackle Ø mm	Clear shackle height mm	Clear shackle width mm	Locking elements Pin pairs	86933	...
49 x 28 x 68	8	24	20	5	101	

86940

## Key cabinets with safety lock

### Design

- Compact, very flat shape requires only minimal space
- **Built-in safety lock with 2 numbered keys**
- **Fixed, numbered hook strips**
- Powder-coated sheet steel
- Matt, resistant surface
- **Colour:** RAL 7035 Light grey
- Incl. fastening material for wall mounting
- Delivery without key fob

### Note:

Key fobs, see art. no. 86945 101.

Hook Quantity	Height mm	Width mm	Depth mm	86940	...
24	250	180	60	301	
36	250	180	60	302	
70	370	280	60	303	
110	370	280	80	304	

86940 301



86940 303



86940 302



86940 304



86941

## Key cabinets XL with safety lock

### Design

- Compact shape
- **Built-in safety lock with 2 numbered keys**
- **10 consecutively numbered and individually adjustable hook strips**
- Sturdy, hinged internal plate
- 2 swivelling index directories, protected in PVC sleeves
- Powder-coated sheet steel
- Matt, resistant surface
- **Colour:** RAL 7035 Light grey
- Incl. fastening material for wall mounting
- Delivery without key fob

### Note:

Key fobs, see art. no. 86945 101.

Hook Quantity	Height mm	Width mm	Depth mm	86941	...
150	550	380	140	301	
200	550	380	140	302	

86941 301



86941 302



## 86942

## Key cabinets with mechanical combination lock

### Design

- Compact shape
- **Safety lock can be set individually using 3-digit code**
- This means that a large number of users can be granted or refused access at any time without any need for the key
- **Fixed hook strips can be labelled using the included self-adhesive number strips**
- Powder-coated sheet steel
- Matt, resistant surface
- **Colour:** RAL 7035 Light grey
- Incl. operating instructions and fixing material for wall mounting
- Delivery without key fob

### Note:

Key fobs, see art. no. 86945 101.

Hook Quantity	Height mm	Width mm	Depth mm	86942	...
24	250	186	94		401
36	300	243	94		402
60	370	288	94		403

86942 401



86942 402



86942 403



## 86943

## Key cabinets with electronic lock

### Design

- **Electronic dial lock, easy to program with a user code (3 to 8-digit)**
- This means that a large number of users can be granted or refused access at any time without any need for the key
- Using the additional built-in barrel lock, the key cabinet can also be opened mechanically in emergencies (2 numbered keys are supplied)
- **Adjustable hook strips, numbered according to capacity**
- Swivelling key list for a clear overview
- Powder-coated sheet steel
- Matt, resistant surface
- **Colour:** RAL 7035 Light grey
- Incl. 4 x 1.5V AA batteries and fastening material for wall mounting
- Delivery without key fob

### Note:

Replacement batteries, see art. no. 39900 303.

Key fobs, see art. no. 86945 101.

86943 501



86943 502



Hook Quantity	Height mm	Width mm	Depth mm	86943	...
21	350	270	95		501
32	450	300	95		502

## 86945

## Key fobs

### Design

- Sorted by colour
- Without numbers

### Applications

For art no. 86940–86943.

86945



Pack = Units	86945	...
10		101



**With us, you receive everything from a single source**

Whether planning a single cupboard or an entire workshop.

We plan your factory equipment to scale directly in your architect's plan, if this is available. As a complete provider of factory equipment, we supply you with everything from a single source.

To plan your workshop/office, we use CAD support tailored to your individual requirements.

**Do you have any questions? We will be happy to provide advice.**

**Your benefits:**

- Expert advice from planning to installation
- Fast and straightforward presentation of your planning in 3D
- Workflows can be optimised through CAD-supported planning

## Factory equipment from HHW – a complete package

