

88001

Slim LED cordless work lamp with USB charging function

IP
54**ATORN®**

Professional inspection light 600R SLIM

Design

- Switch:

1. Auxiliary light
2. Main light 100%
3. Main light 50 %
4. off

- Rugged and splash-proof plastic housing with rubberised grip area

- Lamp head with slim aluminium housing

Fastening options:

- Ball joint (+/- 45° tilt, 360° rotation) with strong retaining magnet on the bottom
- Hook (can be folded out by 210°, can be rotated using the ball joint)
- Li-ion battery pack, 3.7 V/2,600 mAh
- Battery status indicator
- Residual capacity display:
- Can be charged via 5-V micro USB socket

Scope of delivery

- 1x light
- 1x micro USB charging cable 1.5 m
- 1x USB AC charging power supply
(Can optionally be charged via a car adapter – not included in the scope of delivery)

NEW

88001

Main lamp lm (lumens) *	Additional lamps lm (lumens) *	Main lamp eff. light duration approx. hrs.	Additional lamps eff. light duration approx. hrs.	Charging duration approx. hrs.	Light degree of protection	Shock resistance (EN62262)	Dimensions mm	Weight g	88001	...
600 / 225	120	2	10	4,0	IP54	IK07	384 x 45 x 41	250		201

* LED technology lumens at 0.5 m distance

88002

LED rechargeable workshop lamp with USB charging function

IP
54**ATORN®**

Design

- Switch:

1. Auxiliary light
2. Main light 100%
3. Main light 50 %
4. off

- Rugged and splash-proof plastic housing with rubberised grip area

- Lamp handle can be rotated 180° and locked in eight positions

- 2x fold-out hooks that can be rotated by 360°

- 2x holding magnets on the rear

- 1x magnet on the underside

- Li-ion battery pack, 3.7 V/2,600 mAh

- Battery status indicator

- Residual capacity display:

- Can be charged via 5-V micro USB socket

- Delivery incl. 1.5 m micro USB charging cable and
USB AC charging power supply



88002

Main light lm (lumens) *	Auxiliary light lm (lumens) *	Main light eff. light duration approx. hrs.	Auxiliary light eff. light duration approx. hrs.	Charging duration approx. hrs.	Lamp degree of protection	Impact resistance (EN62262)	Dimensions mm	Weight g	88002	...
440 / 280	180	6	9	4,0	IP54	IK07	266 x 48 x 32	340		301

* LED technology lumens at 0.5 m distance

88003

LED rechargeable folding lamp with USB charging function

IP
54**ATORN®**

Design

- Switch:

1. Main light 100%
2. Main light 50 %
3. off

- Rugged and splash-proof plastic housing with rubberised grip area

- Flexible joint can be rotated through 340° and locked in 12 positions

- Pull-out hook that can be rotated 360°

- Belt clip on the underside

- Holding magnet on the underside

- Li-ion battery pack, 3.7 V/1,550 mAh

- Battery status indicator

- Can be charged via 5-V micro USB socket

- Delivery incl. 1.5 m micro USB charging cable and
USB AC charging power supply



88003

Main light lm (lumens) *	Main light eff. light duration approx. hrs.	Charging duration approx. hrs.	Lamp degree of protection	Impact resistance (EN62262)	Dimensions mm	Weight g	88003	...
220 / 105	10	4.5	IP54	IK07	131 x 66 x 28	183		201

* LED technology lumens at 0.5 m distance



SCANGRIP®
INNOVATION FROM DENMARK

Design

- Slim design
- The COB LED light band ensures uniquely powerful and completely uniform illumination, ideal for work lighting

88004 101

MINIFORM

Design

- Ultra-slim pocket work lamp
- Comfortable and ergonomic handle
- Two-stage switch
- Flexible light head can be swivelled up to 180°
- Strong, built-in magnet
- Robust hook for mounting to work belt

88004 102

UNIFORM

Design

- Extremely robust work light
- Waterproof (IP65) for operation in the damp and dirty environment of a workshop
- Intelligent charge level indicator
- Two-stage switch
- Flexible light head can be swivelled up to 180°
- Strong, built-in magnet
- Robust hook for mounting to work belt
- Sleek charging station
- Simple wall mounting

88004 103

UV-FORM

Design

- The most powerful UV lamp on the market
- UV-FORM is a rechargeable LED work light with powerful 1.5-W UV light on top
- Flexible light head can be swivelled up to 180°
- Strong, built-in magnet
- Robust hook for mounting to work belt
- It is a combination of indispensable universal work light and UV detection, eliminating the need for specific UV detection lamps
- UV light is used for leak detection in air conditioning systems with the help of trace elements
- It is also suitable for detecting leaks in larger, complex refrigeration/freezing systems, process cooling systems, heat pumps, etc.

88004 104

SLIM

Design

- The only 3-in-1 compact lamp on the market
- 3-in-1: Inspection light, work light and pocket torch in one lamp
- Ultra-slim and compact design
- Powerful, built-in magnet and hook for flexible positioning

Super-slim light for inspection tasks:

The ultra-thin, compact design of only 9 mm in diameter allows inspection of the narrowest, most difficult-to-access spaces.

This makes the SLIM lamp ideally suited for the most demanding and complex inspection tasks.

Pocket-sized work light:

The SLIM lamp is equipped with a 100% folding light head. Fully folded, the lamp works like a traditional hand-held work lamp.

When folded, the SLIM is merely pocket size - compact and convenient to carry anywhere.

Spotlight function:

The powerful, 100-lumen spotlight allows the SLIM light to also function as a pocket torch. Its unique, never-before-seen functionality means that the lamp also functions as a torch when folded, offering a powerful spotlight as well as a practical, firm hold.

IP 65



88004 101



IP 65



88004 102



IP 20



88004 103



IP 30



88004 104



Type Art. no.	MINIFORM 88004 101	UNIFORM 88004 102	UV-FORM 88004 103	SLIM 88004 104
	COB-LED	COB-LED / Spot: High-power LED	COB LED/high-power UV spotlight	COB LED/Spot: High-power LED
Lux (stage 1/stage 2)	100/200 lux@0.5 m	475/950 lux@0.5 m	200/400 lux@0.5 m	400/800 lux@0.5 m
Lux (spot)	800 lux@0.5 m	0.5 m 6000 lux@	-	4800 lux@0.5 m
Lumens (stage 1/stage 2)	100/200 lumens	250/500 lumens	125/250 lumens	250/500 lumens
Lumens (spot)	75 lumens	175 lumens	-	100 lumens
Operating time (stage 1/stage 2)	6 hrs/3 hrs	4.5 hrs/2 hrs	5 hrs/2.5 hrs	5 hrs/2.5 hrs
Operating time (spot)	4	3 hrs	3 hrs	-

Type	Charging duration hrs.	Battery voltage/capacity V/mAh	Degree of protection	88004	...
MINIFORM	3.0	3.7 / 1000 Li-ion battery	IP65		101
UNIFORM	5.0	3.8 / 3000 Li-ion battery	IP65		102
UV-FORM	3.0	3.7 / 1600 Li-ion battery	IP20		103
SLIM	4.5	3.8 / 2800 Li-ion battery	IP30		104

88013 306**17R battery LED****Design**

- Frosted front glass brightly and optimally illuminates the workplace
- Low power consumption
- Low operating temperature
- Long burn time
- Patented rubber strap for several assembly/mounting options

Rechargeable

- 2 brightness levels
- 1 plug-in power supply unit and 1 charging cable for 12 V car socket
- The light can be used while simultaneously charging

Efficient LED technology

- Bright, anti-glare daylight
- Uniform illumination
- Incredibly long service life

Flexible and ergonomic

- With patented rubber strap, can be set down on a surface, firmly mounted or hung up
- Adjustable mount for different positions
- Tripod support (accessories available, art. no. 88013 305)

Robust and break-proof

- Shock-absorbing rubber edge
- Suitable for use indoors and outdoors

Applications

Ideal for medium-sized work areas where precise light is required and no power connection is available.

88013 301-303**Design**

- Low power consumption
- Low operating temperature

Flexible and ergonomic

- Easy to transport
- Adjustable mount for different positions
- Tripod support (accessories available, art. no. 88013 305)

Efficient LED technology

- Bright daylight
- Anti-glare
- Uniform illumination
- Incredibly long service life

Robust and break-proof

- Shock-absorbing rubber edge
- Can be used indoors and outdoors

88013 301**LED 18****Design**

- Strong daylight in a small format
- Frosted front glass provides optimal workplace illumination that is as bright as day

Applications

Designed especially for service and inspection work. Ideal for small work areas in which precision lighting is required.

88013 302**LED 30****Design**

- Intelligent functionality
- Handy and flexible
- 1 additional socket
- Adjustable, patented rubber strap for multiple mounting options
- Illuminated switch ensures greater orientation in the dark

Flexible and ergonomic

- 1 additional socket on the back
- With patented rubber strap, can be set down on a surface, firmly mounted or hung up

Applications

Ideal for surfaces and medium-sized rooms.

88013 303**LED 50****Design**

- Maximum performance in a compact size
- 2 additional sockets allow you to operate several lamps at once
- Adjustable, patented rubber strap for multiple mounting options
- Illuminated switch ensures greater orientation in the dark

Flexible and ergonomic

- 2 additional sockets on the back
- With patented rubber strap, can be set down on a surface, firmly mounted or hung up

Applications

Ideal for illuminating large spaces. Allows ergonomic working.

88013 304**LED 25****Design**

- The optimum light for the highest demands
- Small and amazingly strong
- Fully waterproof and dust-proof
- Copes with the toughest weather conditions
- Cooling aluminium housing
- Low surface temperature on the lamp
- Minimal fire hazard

State-of-the-art COB LED technology

- The COB LED technology creates a homogeneous, completely uniform light emission
- COB LEDs have a very high CRI value (optimal colour rendering)

Versatile and ergonomic

- Easy to transport and carry
- Ultra-thin construction
- Adjustable bracket for different positions

Economic LED technology

- Extremely powerful illumination
- Incredibly long burn time

Sturdy and resistant

- Extremely robust and impact-resistant
- Can be used indoors and outdoors
- Housing made of die-cast aluminium

Applications

For harsh, wet and dirty conditions in professional environments.

88013 305**Three-leg telescopic tripod**

- Height adjustment from 1.10 m to 3.10 m

Applications

For LED work lamps and energy-saving lamps art. no. 88013 306 and 301–303.

IP 54



88013 306



IP 54



88013 302



IP 67



88013 304



IP 54



88013 301



IP 54



88013 303



88013 305



Type	Watts	Lumens	Kelvin	Service	Energy	Degree	Cable	Cable name	No. of	Power connection	Temperature	Dimensions	Weight	88013	...
	W	lm (1st/2st level)	K	life in h	efficiency class	of protection	length m		sockets		range °C		mm	kg	
17 LED	17	750/1500	4000	50,000	A+	IP54	2	-	-	100-240 V/50-60 Hz	-10 to +40	250 x 256 x 110	1.86	306	NEW
18 LED	18	1500	4500	50,000	A+	IP54	2	H07RN-F 2 x 1.0 mm	-	230-240 V/50 Hz	-25 to +40	200 x 200 x 80	0.96	301	
30 LED	30	2850	4,500	50,000	A+	IP54	2	H07RN-F 3x1.5 mm	1	230-240 V/50 Hz	-25 bis +40	250 x 256 x 109	1.70	302	
50 LED	50	4,000	4,500	50,000	A+	IP54	3	H07RN-F 3x1.5 mm	2	230-240 V/50 Hz	-25 bis +40	300 x 305 x 117	2.46	303	
25 LED	25	2500	6000	50,000	A+	IP67	5	H05RN-F 3 x 1.0 mm	-	100-240 V/50-60 Hz	-25 to +40	220 x 235 x 75	1.95	304	
Tripod	-	-	-	-	-	-	-	-	-	-	-	-	-	305	

ATORN®

Design

- Switch:
 1. Low: 20%
 2. Medium: 45%
 3. High: 100%
 4. off
- Protective rubber edge
- Handle can be swivelled and rotated
- Fastening option:
 - Tripod hole in base
 - Battery status indicator
 - Residual capacity display:
 - Can be charged via barrel plug socket
 - 5 V 1 A USB output

Advantage

- Constant light in the day and at night
- Can be operated while charging

Scope of delivery

- 1x spotlight
- 1x AC power supply
- 1x magnet

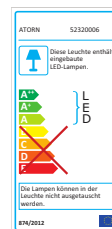
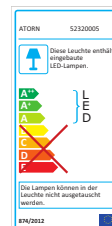
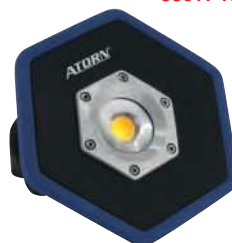
NEW



88011 101



88011 102



Main light approx. lm (lumens) *	Colour rendering index CRI (colour match) *	Battery operation eff. Burn time approx. hours	Battery pack Li-ion V/mAh	Charging duration Approx. hours	Light degree of protection	Shock resistance (EN62262)	Dimensions mm	Weight g	88011	...
1000	> 95	9	11.1 / 2.200	3.5	IP54	IK07	209 x 190 x 73	720	101	
4,000	> 80	6	11.1 / 5.200	6.0	IP54	IK07	265 x 237 x 60	1340	102	

* LED technology lumens at 0.5 m distance

88019

Cordless/mains-powered and cordless LED spotlight professionalLine

brennenstuhl®

88019 100-101

Cordless/mains-powered and cordless LED spotlight

Design

- Burn time: 2.5 h (100%), 5 h (50%) when using an 18 V 5 Ah battery
- LG Innatek SMD LEDs with high efficiency, extremely long service life, shock-resistant, maintenance-free
- Low heat development, no risk of injury
- Extremely sturdy, coated steel tubular frame with ergonomic carry handle
- Impact-resistant housing and front glass, non-slip rubber feet
- Spotlights can be infinitely swivelled and locked in place
- On/off switch for lamp, 2 switching stages (50%, 100%)
- With practical, fold-out cable holder/hanger
- Shock resistance: IK 10
- Complies with BGI 608
- The lamp contains built-in LED lights
- The lights in the lamp cannot be replaced

Applications

Suitable for operation with Li-ion batteries of series AB 1805 (e.g. art. no. 88019 102), as well as 18 V Li-ion batteries from the Bosch Professional assortment (not included in the scope of delivery).

88019 100

Cordless/mains-powered LED spotlight

Design

- Hybrid spotlights for operation with Li-ion battery or mains connection
- Emergency lamp function: In the event of a power failure, it automatically switches to battery power
- 5 m connection line H07RN-F 2x1.0
- Protection class II
- Battery not included in the scope of delivery

88019 101

Cordless LED spotlight

Design

- Protection class III
- Battery not included in the scope of delivery

88019 102

Li-ion battery pack

Design

- 18 V 5 Ah Li-ion battery „powered by Bosch“
- High capacity and long service life
- Li-ion technology, long service life of battery packs due to single cell monitoring and CoolPack technology
- Displays charging condition

Applications

Suitable for all 18 V cordless spotlights from the Brennenstuhl professionalLINE range. Also for all 18 V Li-ion electric tools from the Bosch Professional range.

Note:

Rechargeable battery with charger CB 1801 (art. no. 88019 103) or chargers for 18 V Li-ion batteries from the Bosch Professional range.

88019 103

Quick charger

Design

- Intelligent charging control system to protect the battery
- With battery cooling (active air cooling)

Applications

For Li-ion batteries in the AB 1805 series (e.g. art. no. 88019 102) as well as Li-ion batteries from the Bosch Professional range.

NEW

IP 55

88019 100



IP 55

88019 101



88019 102

88019 103



	Luminous flux lm (Lumens)	Performance approx. Watts	Cable length m	Cable name	Colour temperature K	Degree of protection	88019	...
Cordless/mains-powered LED spotlight	3200	40	5	H07RN-F 2 x 1.0	6000	IP 55	100	
Cordless LED spotlight	3200	40	-	-	6000	IP 55	101	
Li-ion battery pack	-	-	-	-	-	-	102	
Quick charger	-	-	-	-	-	-	103	

88015

Compact LED spotlight professionalLine

NEW

brennenstuhl®

88015 301-303

Cordless or mains-powered LED spotlight

Design

- Highly efficient SAMSUNG SMD LEDs
- Low heat development, no risk of injury
- Extremely long service life of SMD LEDs, shock-resistant, maintenance-free
- Folding clamp for setting up or mounting on a tripod
- Ergonomically shaped carry handle
- Impact-resistant housing and front glass, non-slip rubber feet
- Shock resistance: IK 10
- The lamp contains built-in LED lights
- The lights in the lamp cannot be replaced

88015 301

Cordless LED spotlight

Design

- Burn time: 3 h (100%), 6 h (50%) when using an 18 V 5 Ah battery
- On/off switch for lamp, 2 switching stages (50%, 100%)
- Protection class III
- Battery not included in the scope of delivery

Applications

Suitable for operation with Li-ion batteries of series AB 1805 (e.g. art. no. 88019 102), as well as 18 V Li-ion batteries from the Bosch Professional assortment (not included in the scope of delivery).

IP 20



88015 301

IP 54



88015 302-303

88015 302-303

Mains-powered LED spotlight

Design

- Practical cable holder and plug depot for fast cable storage
- 5 m connection line H07RN-F 3G1.5
- 2 splash-proof sockets with self-closing lids
- Complies with BGI 608
- On/off switch for light
- Protection class I

	Luminous flux lm (Lumens)	Performance approx. Watts	Cable length m	Cable name	Colour temperature K	Degree of protection	88015	...
Cordless LED spotlight	2600	30	-	-	6800	IP 20	301	
Mains-powered LED spot	4700	50	5	H07RN-F 3G 1.5	6800	IP 54	302	
Mains-powered LED spot	7250	80	5	H07RN-F 3G 1.5	6800	IP 54	303	

88016

Mobile LED spotlight

NEW

IP 65

brennenstuhl®

Design

- LED spotlight with super bright Everlight SMD LEDs
- Solid and modern aluminium housing
- Sturdy tubular steel frame with plastic protective corners and ergonomic plastic carry handle
- Spotlights can be swivelled infinitely and locked with one hand using a quick-release clamp
- Front glass made of safety glass
- The lamp contains built-in LED lights
- The lights in the lamp cannot be replaced

88016 201

88016 202

88016 203



Luminous flux lm (Lumens)	Performance approx. Watts	Cable length m	Cable name	Colour temperature K	Degree of protection	88016	...
2930	30	3	H07RN-F 3G1.0	6500	IP 65	201	
4770	50	5	H07RN-F 3G1.0	6500	IP 65	202	
7200	80	5	H07RN-F 3G1.0	6500	IP 65	203	

90401

Cordless/mains-powered LED work lamps

14,4V

18V

230V

Makita

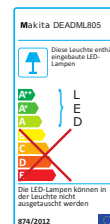
Design

- Work lamps with 14.4 V/18 V or 230 V power supply
- 20 LEDs each with 0.5 W provide optimum illumination
- 2 brightness levels
- 360° rotating luminous element
- Light duration 510 min. (BL1850/18 V 5 Ah)
- Light intensity 750 lx
- Mains cable can be wound around two holding hooks for storage
- Capacity indicator via LED
- Supplied without battery or charger

Scope of delivery:

- Mains connection cable, 2.5 m

90401



Type	Lumens	Voltage V	Lighting duration min.	Luminosity high/low lx	Weight kg	90401	...
DEADML805	8000	14.4/18.0/230	510	750/450	2.3	101	

88017

Professional halogen spotlight

IP
54

88017 101

Halogen spotlight

Design

- Can be swivelled infinitely
- Can be locked in any position
- Aluminium die-cast housing
- Surface-coated
- Colour: silver
- Chrome-plated protective grating
- Protective glass made of pre-tensioned safety glass
- Sturdy tubular steel frame with ergonomic carry handle
- Includes halogen bulb in accordance with new EU framework regulation (2005/32/EC)

Applications

Ideal for outdoor and indoor use.

88017 102

Telescopic tripod

Design

- Heavy, stable and robust
- Base:**
- Folds out
- Extremely stable
- Made of square steel profile
- With floor mounting plates

Legs:

- Powerful, made from sturdy steel
- Zinc-plated
- Infinitely height-adjustable up to max. 2.5 m
- Reliable mounting with star-head screws
- Alternative mounting with supplied hand grips

88017 103

Replacement bulb

Design

- 20% lower power consumption
- Dimmable
- Service life: approx. 2000 hours
- Number of switching cycles $\geq 8000x$
- Colour temperature 2900 K



88017 101



88017 102

	Performance Watts	Version	Cable length m	Cable Name	Degree of protection	88017	...
Professional halogen spotlight	400	R7s	5	H05RN-F 3G1.0	IP 54	101	
Construction telescopic tripod	-	-	-	-	-	102	NEW
Replacement bulb	-	-	-	-	-	103	NEW

88051

LED machine lamps

IP
67


88051 101-103

LED machine lamps

Design

- Robust aluminium housing
- Satin-finish acrylic glass ensures homogeneous and uniform illumination
- Light temperature: daylight white approx. 5500 Kelvin
- 120 degree uniform illumination, anti-glare and flicker-free, low-reflection
- Connection to 24 volt power supply or 24 volt machine control system
- Watertight in accordance with IP67
- 2 rubber-coated magnets included in scope of delivery


Example application:
Machine lighting

Detailed view:
Magnetic fixing

88050 106

Dimmer

Design

- Infinitely regulates the brightness of the LED lights
- Plugged in between the cable couplings of the light and the power supply unit
- IP20 dust-proof

Applications

For LED machine lamps art. no. 88051 101-103 and LED work lamps art. no. 88050 101-103.

IP
20


88050 106



88051 101



88051 102



88051 103



Type	Watts W	Lumens lm	Illumination Degrees	Degree of protection	Dimensions mm	Light 88051	...	Dimmer 88050	...
LIGHT STRIP	5	600	120	IP67	155 x 40 x 15	101			
LIGHT STRIP	12	1600	120	IP67	305 x 40 x 15	102			
LIGHT STRIP	25	3200	120	IP67	560 x 50 x 15	103			
Dimmer	-	-	-	IP20	-			106	

88050 101-103**LED work lamps****Design**

- High-power LED
- **Very robust, housing turned and milled from aluminium**
- Flexible shaft
- **Rubber-coated magnetic base protects painted surfaces from scratching and does not slip**
- Light temperature: daylight white approx. 5500 Kelvin
- Uniform illumination, anti-glare and flicker-free, low reflection
- Supply with 24 volt power supply
- Service life of chip: at least 50,000 hours
- **Load capacity: dust-proof and splash-proof down to plug in accordance with IP65**
- Table clamp, acrylic base and dimmer are available as options

Features:

- Use of high-quality components
- Aluminium housing
- **Extremely energy efficient due to LED lamps**
- Durable
- Robust
- Uniform, homogeneous illumination
- Flexible mounting

Applications

Machine or workplace lighting.

**88050 104****88050 104****Table clamp****Design**

- 2 chrome-plated, round metal plates Ø 73 mm and Ø 90 mm connected via a screw clamp can be fixed to tabletops up to 90 mm thick

Applications

For LED work lamp art. no. 88050 101–103.

88050 105**88050 105****Acrylic base****Design**

- Transparent acrylic plate with chrome-plated metal plate Ø 90 mm
- Basic dimensions 220 x 150 x 16 mm

Applications

For LED work lamp art. no. 88050 101–103.

88050 106**88050 106****Dimmer****Design**

- Infinitely regulates the brightness of the LED lights
- Plugged in between the cable couplings of the light and the power supply unit
- IP20 dust-proof

Applications

For LED work lamps art no. 88050 101-103 and LED machine lamps art. no. 88051 101-103.

Type	Watts W	Lumens lm	Illumination Degrees	Degree of protection	Total length mm	Lamp head mm	Magnetic base Ø mm	Adhesive force N	Weight g	88050	...
FLEXI	4.5	700	120	IP65	600	Ø 65	66	180	950		101
BRIGHT LIGHT	2.5	400	160	IP65	620	90 x 30 x 15	66	180	550		102
FLOODLIGHTS	10.0	1200	160	IP65	850	175 x 50 x 25	88	420	1600		103
Table clamp	-	-	-	-	-	-	-	-	-		104
Base	-	-	-	-	-	-	-	-	-		105
Dimmer	-	-	-	IP20	-	-	-	-	-		106

88024 - 88025**Halogen machine/workplace lamps****Design**

- **With toggle switch for wide beam or spotlight**
- On/off switch on lamp head
- Sturdy, coated, jointed metal hose, length: 500 mm
- Ball joint head
- Beam angle without lens: 36°
- Beam angle with lens: 25°
- Light colour: 3000 K
- Energy class: C

Delivery includes

- Halogen lamp 12 V
- Mounting magnet
- Table clamp
- Fastening screws

88024 101**Design****- 20 watt**

- Luminous flux: 300 lumens
- Illuminance without lens: 850 lux (1 m)
- Illuminance with lens: 670 lux (1 m)

88024 102**Design****- 50 watt**

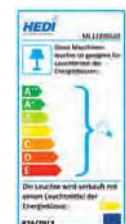
- Luminous flux: 780 lumens
- Illuminance without lens: 2,700 lux (1 m)
- Illuminance with lens: 1,950 lux (1 m)

88025

IP 20

GS

U

88024 101**88024 102**

Performance Watts	Supply voltage Volts	Cable length m	Cable name	Degree of protection	Protection class	Light 88024	Replacement lamp 88025	...
20	230	3	H05 RN-F 2 x 1.0	IP 20	II	101		101
50	230	3	H05 RN-F 2 x 1.0	IP 20	II	102		102

88026

LED machine/workplace lamp

IP
20**ATORN®****Design****- Including adhesive magnet**

- With infinitely adjustable focus
- Light cone can be infinitely adjusted from approx. 36° (wide beam) to 10° (spot) using a handle
- Light colour 6000 K (daylight) enables precise working without placing too much strain on the eyes
- Light output at 30 cm distance:
Spotlight (area 4 x 4 cm) 50,000 lx
Wide beam (Ø 32 cm) 6000 lx
- Focus: adjustable lens frame with aspherical lens
- Upper part of lamp head and complete lamp base made of impact-resistant, non-flammable plastic

- Anodised aluminium star-shaped heat dissipator and lens holder
- Switch integrated in the lamp head
- Coating of light bracket hose: plastic corrugated hose coating
- **Scope of delivery** includes branded high-performance LED 3 W, extra strong adhesive magnet, screw terminal with star-shaped handle and screws for direct mounting



88026

Illuminance Spotlight lx (Lux)	Illuminance Wide beam lx (Lux)	LED Quantity	LED Watts	Voltage V(AC)/Hz	Degree of protection	Cable length m	Lamp bracket tube Length mm	Overall length mm	88026	...
50,000	6000	1	3	230 / 50	IP 20	1.6	420	590		101

88030

Adhesive magnet lamp

IP
54**Design**

- Anodised aluminium reflector Ø 153 mm
- Anti-glare mesh
- Flexible lamp bracket: tube length 350 mm
- Concealed switch in lamp base
- Permanent adhesive magnet base, adhesive force approx. 650 N
- Supplied without bulb

Applications

For bulbs up to 60 watts.



88030

Power Watts	Supply voltage Volts	Version	Cable length m	Degree of protection	Protective class	Overall length mm	88030	...
60	230	E 27	2.5	IP 54	II	660		201

88042

Adhesive magnet lamp

IP
40**Design**

- Cold light lamp
- Uniform light distribution through high-gloss reflector
- Flexible lamp bracket: tube length 300 mm
- Concealed switch in light head
- Permanent adhesive magnet base, adhesive force approx. 650 N
- Ballast in foot
- Grounding contact plug
- Including 11 watt compact fluorescent tube

- Approx. 80% energy savings compared to incandescent lamps



88042

	Performance approx. watts	Supply voltage Volts	Version	Cable length m	Degree of protection	Protection class	88042	...
Adhesive magnet lamp	11	230	G 23	2.5	IP 40	I		101
Spare fluorescent tube	11	-	G 23	-	-	-		102

88047

Halogen lamp with adhesive magnet

IP
44**Design**

- Light head made of high-pressure die-cast aluminium with thermally insulated edge and hard safety glass
- Flexible lamp bracket: tube length 300 mm
- Permanent adhesive magnet base, adhesive force 650 N
- Safety transformer in lamp base
- Grounding contact plug
- Includes 12 volt/20 watt low-voltage halogen light

Applications

Very bright spotlight for adjustment work on machines, control work, etc.



88047

Performance approx. volts/watts	Supply voltage Volts	Cable length m	Degree of protection	Protection class	Lamp head Ø mm	Overall length approx. mm	88047	...
12/20	230	2.5	IP 44	I	114	550		101

88000

Tube lamps

brennenstuhl®

88000 201

Design

- Highly transparent, impact-resistant protective tube
- Ergonomically shaped handle
- Electronic ballast unit in handle
- With hexagonal bead anti-roll protection
- Large, rotatable hook
- Connection cable with Euro plug
- Extremely low power consumption
- Contains built-in lights
- The lights in the lamp cannot be replaced
- Energy efficiency class B

88000 203

LED workshop lamps

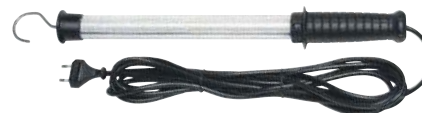
Design

- 54 bright SMD LEDs with extremely long service life
- Impact-resistant and break-proof protective tube with glare protection
- Sturdy, ergonomic handle with hexagonal bead to prevent rolling away
- Stable, rotatable hook
- The lamp contains built-in LED lights
- The lights in the lamp cannot be replaced
- Efficiency of lamp 84 lm/W
- Colour temperature 6500 K
- Energy efficiency class A+

Applications

Best suited for use in the workshop and hobby applications.

88000 201



IP 54

88000 203



Luminous flux lm (lumens)	Cable length m	Cable name	Degree of protection	Length approx. mm	88000	...
320	5	H05RN-F 2 x 0.75	-	500		201
420	5	H05RN-F 2 x 1.0	IP 54	440		203

88204

Multiple socket outlets

brennenstuhl®

Design

- Standard, top-quality multiple socket outlet
- Sockets arranged diagonally for convenient insertion of angled plugs
- Illuminated safety switch, switches on/off on two-poles
- Sockets with child protection

88204 101+202



88204 103+204



Sockets Number	Cable length m	Length approx. cm	Cable name	Colour	88204	...
3	1.5	20.5	H05VV-F 3G1.5	black		101
3	5.0	20.5	H05VV-F 3G1.5	black		202
6	1.5	34.0	H05VV-F 3G1.5	black		103
8	3.0	45.0	H05VV-F 3G1.5	black		204

88208

Multiple socket outlets with overvoltage protection

brennenstuhl®

88208 101

Design

- Premium-Line overvoltage protection 30,000 A
- Guaranteed protection against high overvoltage and strong surges in current
- Three-wire arrangement protects phase, neutral and protective conductors
- Thermal fuse, additional protection against impermissible high heating of the varistors and for separating the mains voltage in the event of severe overvoltage
- Extremely short response time for super-fast suppression of overvoltage
- Visual functional display of device protection
- With 10 amp fuse, replaceable
- Illuminated safety switch, switches on/off on two-poles
- Integrated filter for premium protection against HF interference

88208 102

Design

- Protects your devices against faults in the power network such as overvoltage, indirect lightning strikes or circuit noises, with a maximum sum of leakage currents up to 30,000 A
- Intelligent, replaceable modular construction system
- Illuminated safety switch, switches on/off on two-poles
- With 10 amp fuse, replaceable
- Sockets with child protection

88208 101



88208 102



Sockets Number	Cable length m	Length approx. cm	Cable name	Colour	88208	...
4	1.8	45	H05VV-F 3G1.0	black		101
6	3.0	52	H05VV-F 3G1.5	black		102

88209

Extension cable

brennenstuhl®

88209 101

Plastic cable, short extension

Design

- With grounding contact plug and coupling

88209 102

Rubber cable IP 44

Design

- With grounding contact plug and coupling with locking cap

Applications

For short-term outdoor use.

88209 106

Rubber cable IP 44 professionalLine

Design

- Very robust
- Oil resistant
- With extra sturdy grounding contact plug and coupling with locking cap
- UV-resistant plug and coupling with anti-kink protection and cable sealing
- Complies with BGI 608

Applications

Especially suitable for professional use.

88209 104-105

Construction site cable IP 54 with power block Design

- High-quality, impact-resistant, break-proof multiple socket block
- 4 dust-proof and splash-proof sockets in 45° arrangement with self-closing folding lids to protect against contamination
- Folding metal hook

Applications

Ideal for tough applications.

For use on construction sites and continuous use outdoors.

88209 101

IP 44

88209 102

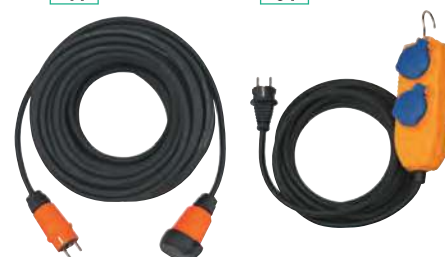


IP 44

88209 106

IP 54

88209 104-105



Sockets Number	Cable length m	Cable name	Cable material	Cable colour	Degree of protection	88209	...
1	5	H05VV-F 3G1.5	plastic	black	-		101
1	10	H05RR-F 3G1.5	rubber	black	IP 44		102
1	25	H07RN-F 3G1.5	rubber	black	IP 44		106 NEW
4	5	H07RN-F 3G1.5	rubber neoprene	black	IP 54		104 NEW
4	10	H07RN-F 3G1.5	rubber neoprene	black	IP 54		105 NEW

88210 - 88211

Vario-Line cable boxes

brennenstuhl®

Design

- Impact-resistant housing made of special plastic
- Ergonomically shaped carry handle
- Robust twin feet for good stability
- 4 grounding contact sockets
- Overheating protection, indicator light in the event of overheating and overloading
- Sockets with child protection
- 3-year manufacturer's warranty (see terms of warranty)

88210

88211



Cable length m	Cable name	Cable material	Cable colour	Sockets Number	Dimensions W x H x D mm	88210	...	88211	...
5	H05VV-F 3G1.5	plastic	black	4	19.5 x 24.0 x 7.5		301		
10	H05VV-F 3G1.5	plastic	black	4	22.5 x 27.0 x 8.0				301

88100

Cable drum 290/50 VV

brennenstuhl®

Design

- Drum body made of Brefflex special plastic on a zinc-plated support frame
- Ergonomic handle with axis for perfect cable management during winding and unwinding
- Stable tubular steel frame
- 4 grounding contact sockets with self-closing lids

- Overheating protection, indicator light in the event of overheating and overloading
- 3-year manufacturer's warranty (see terms of warranty)

Note:

Does not comply with BGI 608.

88100



Cable length m	Cable name	Cable material	Cable colour	Drum Ø mm	88100	...
50	H05VV-F 3G1.5	plastic	black	290		101

88207

Cable drums

IP
44

88207

brennenstuhl®

Design

- Drum body made of special plastic on a zinc-plated support frame
- Innovative **cablepilot** handle for perfect cable management: swings on both sides and facilitates easy carrying and suspension
- With turning handle for comfortable rolling up
- 3 grounding contact sockets, splash-proof, with self-closing lids
- Overheating protection, indicator light in the event of overheating and overloading

- RN cable approved for use in difficult construction conditions in line with VDE 0100 Part 704
- 3-year manufacturer's warranty (see terms of warranty)

Use

For use on construction sites in accordance with BGI 608 and continuous use outdoors.



Cable length m	Cable name	Cable material	Cable colour	Sockets Quantity	Degree of protection	Drum Ø mm	88207	...
25	H07RN-F 3G2.5	rubber neoprene	black	3	IP 44	290	201	
40	H07RN-F 3G1.5	rubber neoprene	black	3	IP 44	290	202	

88201

Steel cable drums professionalLine

IP
44

88201

brennenstuhl®

Design

- Drum body made of sheet steel
- Cold-resistant to as low as -25 °C
- Insensitive to petrol and oils
- Protective insulation front and back for durable operation
- Innovative **cablepilot** handle for perfect cable management: swings on both sides and facilitates easy carrying and suspension
- Large, robust folding turning handle to easily wind and unwind the cable
- 4 grounding contact sockets, splash-proof with self-closing covers

- Extra-robust grounding contact plug
- Overheating protection in the event of overheating and overloading
- Visual readiness display in socket insert
- Complies with BGI 608

BREMMAX®-PUR cable (BQ cable):

- Extremely abrasion-resistant
- Secured against over-winding
- Extreme cut and tear resistance
- Resistant to acids and oil
- Weather and microbe-resistant
- Cold resistant to as low as -40 °C

NEW



Cable length m	Cable name	Cable material	Cable colour	Sockets Quantity	Degree of protection	88201	...
33	H07BQ-F 3G1.5	Bremaxx	orange	4	IP 44	101	
50	H07BQ-F 3G1.5	Bremaxx	orange	4	IP 44	102	

88205 - 88206

cable drums

IP
44

88205

Design

- Stable cable reel with sturdy tubular steel frame
- Ergonomic, insulated bow handle
- Plug parking station
- Rotation stop switch
- Extremely stable due to low centre of gravity
- Splash-proof 3-way socket with plug sealing lip
- Thermal protection switch according to VDE 0620 and Diag S

Rapid fault diagnostics using the new cable drum diagnostics system (Diag S):

Green light on: Power supply is active. The cable drum is ready for operation. If the connected device does not work, there is an error with the connected cable or the device itself.

Red light on: Connected, powered devices are not working as the thermal protection switch has been triggered. As soon as the cable drum has cooled down and the thermal protection switch is pressed, the cable drum can be used again.

Both lights off: The cable drum is not receiving power.

- It is not plugged in or the connecting socket has no power.
- The cable drum is defective. A specialist should be consulted for repair.

88205

Design

- Drum made of zinc-plated sheet steel
- Grounded drum

Applications

Approved for continuous use outdoors. Complies with BGI 600, K1.

88206

Design

- Drum made of plastic

Applications

Approved for continuous use outdoors as well as on construction and installation sites. Complies with BGI 608 and BGI 600, K2.



88206



Drum	Cable length m	Cable name	Cable material	Cable colour	Sockets Number	Degree of protection	88205	...	88206	...
Sheet steel	40	H07RN-F 3G1.5	rubber	black	3	IP 44	202			
Plastic	40	H07RN-F 3G1.5	rubber	black	3	IP 44			202	

88202

professionalLine cable drums

IP
44

brennenstuhl®

Design

Professional drum with all-round over-winding protection:

- Stable on all 4 sides
- Perfect cable management on all 4 sides
- Large, robust folding turning handle to easily wind and unwind the cable
- Sturdy carrying handles and plug garage on all 4 sides
- The Rubbabren housing and drum material made from a plastic/rubber blend are extremely shock- and impact-resistant

- Drum body cold-impact-resistant to as low as -25°C
- The RN cable is very sturdy, oil resistant and especially suited for professional use
- 4 grounding contact sockets, splash-proof with self-closing covers
- Extra-robust grounding contact plug
- Overheating protection, indicator light in the event of overheating and overloading
- Visual readiness display in socket insert
- Complies with BGI 608

Applications

For permanent use under the harshest conditions.

NEW

88202 201-202



Cable length m	Cable name	Cable material	Cable colour	Sockets Quantity	Degree of protection	88202	...
33	H07RN-F 3G2.5	rubber neoprene	black	4	IP 44		202
50	H07RN-F 3G1.5	rubber neoprene	black	4	IP 44		201

88202

professionalLine cable drum with power block

IP
44

brennenstuhl®

Design

Mobile power block:

- 4 additional sockets for practical use on scaffolding, roofs, etc.
- 4 splash-proof sockets in 45° arrangement with self-closing hinged lids for protection against dirt
- Visual readiness display
- Folding metal hooks and strap for more mounting options

Professional drum with all-round over-winding protection:

- Stable on all 4 sides
- Perfect cable management on all 4 sides
- Large, robust folding turning handle to easily wind and unwind the cable
- Sturdy carrying handles and plug garage on all 4 sides

- The Rubbabren housing and drum material made from a plastic/rubber blend are extremely shock- and impact-resistant
- Drum body cold-impact-resistant to as low as -25°C
- The RN cable is very sturdy, oil resistant and especially suited for professional use
- 4 grounding contact sockets, splash-proof with self-closing covers
- Extra-robust grounding contact plug
- Overheating protection in the event of overheating and overloading
- Cable reel with 5 m cable for connecting drum to power network
- Visual readiness display in socket insert
- Complies with BGI 608

Applications

For permanent use under the harshest conditions.

NEW

88202 101

Cable reel with
5 m cable on
back

Mobile power block

Cable length m	Cable name	Cable material	Cable colour	Sockets Quantity	Degree of protection	88202	...
50 + 5	H07RN-F 3G1.5	rubber neoprene	black	4 + 4	IP 44		101

88202

professionalLine power blocks with extension cable

IP
54

brennenstuhl®

Design

- Mobile power block with 4 sockets for practical use on scaffolding, roofs, etc.
- 4 splash-proof sockets in 45° arrangement with self-closing hinged lids for protection against dirt
- Ergonomic, impact-resistant, break-proof multiple socket block in a sturdy design
- Visual readiness display
- Folding metal hooks and strap for more mounting options
- The RN cable is very sturdy, oil resistant and especially suited for professional use

Applications

Ideal for use on construction sites and permanent outdoor use (IP 54).

NEW

88202 102-103



Cable length m	Cable name	Cable material	Cable colour	Sockets Quantity	Degree of protection	88202	...
10	H07RN-F 3G2.5	rubber neoprene	black	4	IP 54		102
15	H07RN-F 3G1.5	rubber neoprene	black	4	IP 54		103

88220

Cable drum CEE 1 IP44

IP
44

brennenstuhl®

Design

- Drum body made of special plastic on a zinc-plated support frame
- Innovative cablepilot handle for perfect cable management
- Swings on both sides and facilitates easy carrying and suspension
- CEE plug 400 V/16 A
- 1 CEE socket 400 V/16 A
- Grounding contact sockets distributed over separate phases
- 3-pole safety switch-off and overheating protection

Applications

For use on construction sites and indoors, IP 44.
Ideal for harsh conditions on construction sites, in workshops and for industrial applications.



For use outdoors

88220

Cable length m	Cable name	Cable material	Cable colour	Sockets Quantity	Degree of protection	Drum Ø mm	88220	...
30	H07RN-F 5G1.5	rubber neoprene	black	3	IP 44	290		101

88225

Compact low-voltage current distributor BKV 2/4 T IP 44

IP
44

brennenstuhl®

Design

- Stable, impact-resistant and splash-proof plastic housing
- Carry handle
- Grounding contact sockets distributed over all 3 phases
- Oil-resistant rubber cable for constant use outdoors

Applications

For use on construction sites and indoors, IP 44.



88225

Cable length m	Cable name	Number Schuko sockets 230 V/16 A	Number CEE sockets 400 V/16 A	88225	...
2	H07RN-F 5G1.5	4	2		201

88226

CEE high-voltage current extension cable 400 V/16 A

IP
44

brennenstuhl®

Design

- Special rubber cable
- CEE plug and coupling with locking flap, 5-pole
- Oil and UV resistant

Applications

Suitable for outdoor use.
Ideal for tough applications.

NEW



88226

Cable length m	Cable name	Cable material	Cable colour	Sockets Quantity	Degree of protection	88226	...
10	H07RN-F 5G1.5	rubber neoprene	black	1	IP 44		101
30	H07RN-F 5G1.5	rubber neoprene	black	1	IP 44		102

88231

Automatic cable winder

IP
44

brennenstuhl®

Design

- Convenient automatic cable winding
- For mounting to wall and ceiling
- Swivels up to 180°
- Sturdy plastic housing
- With overheating protection
- Socket with child protection

Applications

Ideal for use outdoors,
e.g. in the garden (IP44 – splash-proof).

NEW



88231

Cable length m	Cable name	Cable material	Cable colour	Degree of protection	Housing colour	88231	...
9 + 2	H07RN-F 3G1.5	rubber neoprene	black	IP 44	yellow		101
16 + 2	H07RN-F 3G1.5	rubber neoprene	black	IP 44	yellow		102

Power distributor

88240

Energy block pendulum power distributor

brennenstuhl®

Design

- Impact-resistant plastic housing with large tool hook
- With 3 m sturdy, zinc-plated steel link chain
- 5 m Breflex neoprene cable

Applications

For variable current at any working height.
Work without cable clutter at the workspace.

88240 101

Design

- 2 x 4 grounding contact sockets 230 V
- With self-closing covers to protect against dust and dirt

88240 102

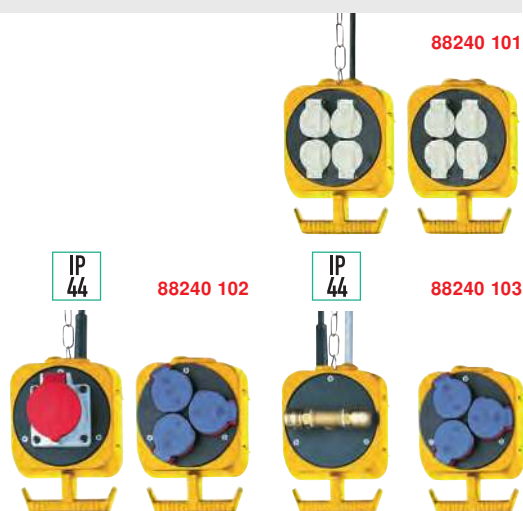
Design

- 3 grounding contact sockets, 230 V and 1 CEE socket, 5-pole, 400 V
- Splash-proof IP 44

88240 103

Design

- 3 grounding contact sockets, 230 V and 2 one-handed pneumatic couplings with 5 m connection hose, Ø 6/12 mm
- Splash-proof IP 44



Schuko sockets 230 V Number	CEE sockets 400 V Number	Pneumatic couplings Number	Cable length m	Cable name	Cable colour	Degree of protection	88240	...
8	-	-	5	H07RN-F 3G1.5	black	-	101	
3	1	-	5	H07RN-F 3G1.5	black	IP 44	102	
3	-	2	5	H07RN-F 3G1.5	black	IP 44	103	