

39200

Inspection mirrors

39200 101

Design

2 pieces, with metal handle.

39200 102

Design

2 pieces, with plastic handle.

Mirror Ø mm	Length mm	39200	...
30	210	101	
24	260	102	



39200 101



39200 102

39205

Flexible workshop mirror



Design

- Aluminium mirror housing
- Metal guide hose chrome-plated brass
- The mirror can be adjusted from the handle to the desired angle

Mirror size mm	Shaft length mm	39205	...
50 x 70	500	101	



39205

39206

Inspection mirror

Design

- Inspection mirror with telescopic handle
- No unintentional twisting of the mirror with the oval telescopic tube

Mirror Ø mm	Extendable length from-to mm	39206	...
30	240 - 680	101	
50	240 - 680	102	



39206 101



39206 102

39210

Inspection mirror

Design

- With lighting, flexible shaft plus plastic handle for 1.5 V battery, type LR 03
- With 2 replaceable mirrors, 24 and 30 mm Ø flat
- The mirrors are threaded for easy replacement, enabling you to see even into small openings
- Smallest Ø without mirrors 11 mm, smallest Ø with mirror 24 mm

Applications

The light falls on the mirror and is reflected onto the visible surface in the mirror.

Note:

Replacement batteries, see art. no. 39900 304.

Mirror Ø mm	39210	...
24/30	101	



39210

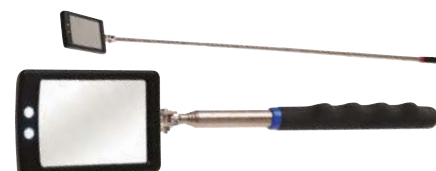
39209

LED telescopic inspection mirror

Design

- Inspection mirror with handy and slip-proof telescopic handle
- Mirror can be folded and turned
- With 2 LEDs

Length mm	Mirror size mm	39209	...
285-870	41 x 62	101	



39209

39211

Illuminated inspection mirror



Design

- Flexible shaft
- Mirror angle adjustable by up to 90° via thumb control
- Powerful lamp for illuminating dark places

Note:

Replacement batteries, see art. no. 39900 303.

Length mm	39211	...
620	101	



39211

Mirrors | Magnifiers

39212

LED inspection mirror set

Design

- 1 telescopic pick-up magnet with LED lighting, extendable up to 665 mm, load-bearing capacity 450 g
- 1 telescopic pick-up magnet, extendable up to 665 mm, load-bearing capacity 3500 g
- 3 inspection mirrors, mirror Ø 21, 31 and 38 mm
- Practical storage bag
- Includes 3 batteries (type SR41)

Note:

Replacement batteries, see art. no. 39900 100.

39212


Mirror Ø mm	39212	...
21/31/38		101

39214

Pocket magnifier lamp easyPOCKET

ESCHENBACH

Design

- Diffractive, aspherical PXM® lightweight lens (very flat and thin) for inserting into the credit card-sized housing. Housing colour: blue metallic.
- Ultra-flat and lightweight design: Small-sized case for protected storage guaranteed in every pocket
- Brilliant image with 4x magnification
- Very bright LED lighting when lens is extended

- Very economical. The LED light switches on automatically only when the lens is fully extended.
 - Very small, bright SMD LED lighting with virtually unlimited life
- Supplied with 2 batteries (AA 1.5 V, type 2025)

39214


Magnification	Housing dimensions mm	39214	...
4x	86 x 54 x 6		101

39215

Folding magnifier visoPOCKET

ESCHENBACH

Design

- Diffractive aspherical lens
- Large visual field with super flat lens
- Handy credit card size
- Lens protected from scratches thanks to leather case

Applications

Ideal for on the go, when small print needs to be magnified quickly and easily.

39215


Magnification	Dimensions mm	Dioptre	Colour	39215	...
2.5x	74 x 48	6	brown		101

39216

Folding pocket magnifiers

Design

- 2 lenses
- Housing made of brass
- Frame made of zinc, chrome-plated

39216


Magnification	Lens Ø mm	39216	...
10x	21		101
20x	21		102

39217

Folding magnifier

ATORN®

Design

- Biconvex glass lens in plastic frame
- Nickel-plated brass cover plates

39217


Magnification	Lens Ø mm	39217	...
3/6/9x	30		201

39220

Watchmaker's magnifier/stone magnifier

ESCHENBACH

Design

- PXM® lightweight lens with duplex coating
- With ventilation hole to prevent misting
- Made from flame retardant plastic
- Colour anthracite

Magnification	Lens	Lens Ø mm	Design	39220	...
5x	plano-convex	25	Watchmaker's magnifier		301
7x	plano-convex	25	Watchmaker's magnifier		302
10x	aspheric	25	Watchmaker's magnifier		303
15x	aspheric	25	Stone magnifier		304



39222

Watchmaker's magnifier

Design

- With 2 glass lenses

Magnification	Lens Ø mm	39222	...
3x	25		101



39223

Reading glasses

Design

- Glass lens

Magnification	Lens Ø mm	39223	...
10x	30		102
15x	21		103



39225

Reading glasses

Design

- Biconvex
- Glass lens
- With plastic/wooden handle
- Metal frame

39225 105

ATORN®

Design

- Round aluminium handle with recessed grips
- Nickel-plated brass frame.

Magnification	Dimension Ø approx. mm	39225	...
2.0x	100		102
2.5x	75		105
4.0x	65		104



39224

Handheld magnifiers

ATORN®

Design

- Aplanatic glass lens for high-contrast and very sharp image up to the edge
- Frame and handle made of black anodised aluminium

Magnification	Lens Ø mm	39224	...
4x	50		201
5x	40		202
8x	30		203
10x	23		204
15x	23		205



Magnifiers | Thread counters

39218

LED magnifier lamps powerlux

ESCHENBACH

Design

- PXM® lightweight lens with cera-tec® coating
- Very easy, intuitive movement over the reading material thanks to ergonomic design
- With battery conserving, automatic switch-off
- Consistently bright and dazzle-free illumination
- Shadow-free illumination thanks to the 2 opposing SMD LEDs

- Suitable for right-handed and left-handed people
- Switches off after 30 minutes.
- Supplied with 3 batteries (AAA) and protective hard foam case

Note:

Replacement batteries, see art. no. 39900 304.



39218

Magnification	Lens Ø mm	Light colour	39218	...
5x	58	8000 K		101
7x	58	8000 K		102



39230

Digital magnifier mobilux DIGITAL Inspection

ESCHENBACH

Design

- Large magnification range and extensive configuration options
- Test images in HD quality
- Software for live streaming and as measuring software
- Integrated 1/4 inch thread for tripod
- Touchscreen 4.3 inch display resolution 480 x 272 pixels
- Photographic resolution 1280 x 720 pixels, 16:9 format, JPEG
- Automatic shut-off
- Memory feature for storing up to 10,000 images

Applications

Checking specific quality characteristics during incoming and outgoing goods inspections, with warehouse samples and during the production process is a basic prerequisite for ensuring high customer satisfaction. mobilux DIGITAL Inspection is an ideal tool for **non-contact visual inspection** in areas such as production, quality control or repairs – both at the workbench and on the go. For enlarged presentation and documentation.

Scope of delivery:

- Measuring software
- 4 GB SD card
- Charger with plug adapters (EU, US, UK, AUS)
- Storage case
- Stand (optional)



39230

Magnification	39230	...
1.25–15x		101



39219

Pocket magnifier lamps mobiluxLED

ESCHENBACH

Design

- Three different colours of light can be selected using supplied filter
- No lamp replacement is required, the LED lighting used has a lifespan of approx. 50,000 hours
- Voltage control via step-up converter, meaning brighter, constant illumination over a longer period of time
- Bright, homogeneous illumination from SMD-LED and collimating lens

- Easy battery replacement thanks to easy-to-use battery cover and clearly specified battery location due to contact springs
- Improved comfort due to eyelet for lanyard
- Supplied with 2 batteries (AA) and case with loop for connection.

Note:

Replacement batteries, see art. no. 39900 303.



39219 100

Magnification	Lens size mm	39219	...
3x	90 x 54		100
5x	Ø 58		101
7x	Ø 35		102
10x	Ø 35		103
12.5x	Ø 35		104



39219 101-104

39227**Magnifier lamps****Design**

- Biconvex plastic lens
- Frame and handle in impact-resistant plastic
- Batteries not included in the scope of delivery

39227 101**Design**

- Power supply 2 x 1.5 volt AA batteries type LR 6, AA (art. no. 39900 303)

39227 102**Design**

- With **LED lamp**
- Power supply 3 x 1.5 V micro batteries type LR 03, AAA (art. no. 39900 304)

**39227 101****39227 102**

Magnification	Lens Ø mm	39227	...
3x	50		101
10x	30		102

39236**Magnifying glasses maxDetail****ESCHENBACH****Design**

- Very light
- Straight arms for comfortable fit
- Also suited for spectacle wearers since dioptric compensation of +/- 3 dpt is possible
- Large visual field (approx. Ø 150 mm at a distance of 400 mm)
- Long working distance and large field of vision
- Supplied in glasses case

Applications

Relaxed and detailed view with maximum freedom of movement.

**39236**

Magnification (Galileo system)	Working distance approx. mm	39236	...
2x	400		101

39229**Headband magnifying glasses****Design**

- User-friendly due to adjustable head band with hook and loop fastener
- Weight only approx. 120 g
- Large field of vision
- Suitable for users who wear glasses
- Both hands remain free
- 2nd lens can be folded down for greater magnification

Applications

For reading, precision work, quality controls, etc.

**39229**

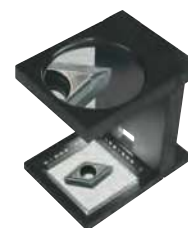
Magnification	Lens size mm	39229	...
2.2-3.3x	100 x 30		101

39233**Measuring magnifying glass****Design**

- With **illumination**
- **Biconvex plastic lens**
- Frame and stand part in impact-resistant plastic
- **Measuring plate**, pitch 1 mm, scale length 60 mm and from 0-2.1/4
- Power supply 4 x 1.5 V AA batteries type LR 6, AA
- Batteries not included in the scope of delivery

Note:

Batteries, see art. no. 39900 303.

**39233**

Magnification	Lens Ø mm	Height approx. mm	39233	...
3x	89	133		101

39234**Measuring magnifying glass (thread counter)****Design**

- With millimetre and inch scale

**39234**

Magnification	Lens Ø mm	39234	...
6x	30		101

Thread counters | Magnifiers | Measuring microscopes | Reading glasses

39238

Precision thread counter

ESCHENBACH

Design

- Biconvex
- With a square cut-out, without scale
- Thread counter in precision design
- Brass housing, semi-gloss chrome-plated
- Silicate glass

39238



Magnification	Lens Ø mm	Cut-out mm	39238	...
8x	17.6	20 x 20		101

39241

Measuring magnifiers

ATORN®

Design

- Full metal design
- Achromatic glass lens system
- Parallax-free, distortion-free reading
- Brass scale plate, chrome-plated, high-precision laser graduated
- Half-open tube with white background for optimum, glare-free illumination of objects

- Superb edge sharpness for near parallax-free viewing

Applications

For surface measuring tasks, e.g. measuring the indentation in the Brinell hardness test.

39241



Magnification	Measuring range mm	Scale interval mm	Height mm	39241	...
6x	20	0.1	56		101
8x	10	0.1	45		102
10x	10	0.1	52		103

39242

Precision scale magnifiers

ESCHENBACH

39242 101-102

Precision scale magnifiers

Design

- Achromatic glass lens, tempered
- Distortion-free and razor-sharp picture
- Sharpness setting using non-slip focusing ring
- With scale type A (art. no. 39242 201)
- Supplied in a solid plastic box with space for other scales

39242 201-204

Scales, individual

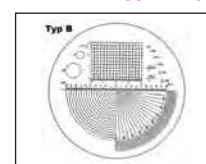
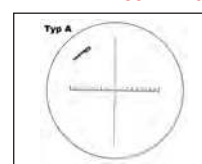
39242 101

39242 102



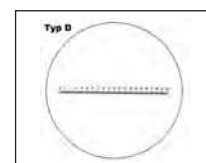
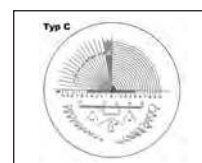
39242 201

39242 202



39242 203

39242 204



Type	Magnification	Lens Ø mm	39242	...
Scale magnifier	7x	23		101
Scale magnifier	10x	23		102
Scale type A	-	-		201
Scale type B	-	-		202
Scale type C	-	-		203
Scale type D	-	-		204

39243

LED lighting equipment for scale magnifiers art. no. 39242

ESCHENBACH

Design

- Illumination with 2 high-quality LEDs for highest image quality
- Grip cover for 2 batteries, type Baby
- Supplied with lamp, but without batteries.

Applications

For scale magnifiers (art. no. 39242) if the ambient light is no longer sufficient.

Note:

Batteries, see art. no. 39900 402.

39243

	39243	...
		101



39249**Measuring microscopes****ATORN®****Design**

- Achromatic lens system
- Robust light metal housing
- Focussing using screw thread in lens and eyepiece
- Mounted LED lighting
- Power supply via 4 x button cell 1.5 V (type SR 44)

Scope of delivery:

- Measuring microscope with LED illumination
- 4 batteries
- In transport case

Applications

For general measuring tasks in linear measurement technology, the graphics industry or hardness tests for Brinell and Vickers.

Note:

Replacement batteries, see art. no. 39900 101.

39249

Magnification	Object field Ø mm	Measuring range mm	Scale interval mm	Lens distance mm	39249	...
20x	8.0	7	0.05	57		101
40x	5.0	4	0.02	36		102
60x	2.5	2	0.0125	26		103

39252**Magnifying glass on stand****ATORN®****Design**

- Aplanatic silicate lens
- Flexible metal gooseneck arm
- Heavy table base

39252

Magnification	Lens Ø mm	Arm length mm	Table base Ø mm	39252	...
2x	75	300	110		101

39253**Magnifying glass on stand with LED lighting****ATORN®****Design**

- **Biconvex** wide field glass lens
- **5 power LEDs** for very bright lighting
- Extremely sturdy construction (heavy steel base, flexible gooseneck arm, magnifier head made of aluminium)

- Half-frame lens mount for viewing without disturbing edges
- Shadow-free light
- Low power consumption
- With 5 V mains plug

39253

Magnification	Lens Ø mm	39253	...
2x	120		101

LED magnifying lamps | Cleaning cloths

39254

LED magnifying lamps

ATORN®

39254 301-302

LED magnifying lamps

Design

- Segmented switching of the SMD LEDs in two stages
- High-quality, clear optical lens
- Compact lamp housing with integrated hinge
- Non-slip, well-designed soft plastic ring provides impact protection
- Can also be used as a reading lamp using external lamp switch
- Even distribution of light in the working area
- Concealed, easily moveable arm mechanism that does not present a risk of trapping
- Large working radius
- Removable protective cover
- Replaceable glass lens

39254 201-202
Replacement lenses

39254 203
Universal holder
Design

- Made of cast aluminium with plastic plain bearings
- A plain bearing and a cover for the hole that is not required are supplied
- The plain bearing mount is suitable for bolts up to 12.9 mm.

Applications

Can be mounted either as a wall or table holder.



39254 301-302

Technical data:	LED magnifying lamps (art. no. 39254 301-302)
Technology	
Lamp:	90 ultrabright SMD LEDs, 2 settings using electronic button
Service life of the LEDs:	Up to 25,000 hours
Colour temperature:	6500 K
Mains voltage:	240 V/50 Hz
Power consumption:	3.5 W (art. no. 39254 301)/9 W (art. no. 39254 302)
Energy efficiency class:	A+
Power consumption in standby mode:	0.3 Watt
Dimensions and weights	
Lamp housing (L x W x H):	230 x 200 x 30 mm
Upper arm length:	approx. 500 mm
Lower arm length:	approx. 470 mm
Distance from lower joint to lens centre:	approx. 1060 mm
Mandrel diameter for clamp or tripod:	12.7 mm, length approx. 48 mm
Maximum bench plate thickness:	approx. 65 mm
Length of connecting cable:	approx. 165 mm
Weight:	2.4 kg
Scope of delivery:	Magnifying lamp, table clamp, instructions



Magnification	Dioptries	Lens-Ø mm	Lamp 39254	...	Replacement lens 39254	...	Universal holder 39254	...
1.75x	3	125		301		201		203
2.25x	5	125		302		202		203

39254

LED magnifying lamp

ATORN®

Design

- Real glass lens
- 45 extremely bright, highly efficient SMD LEDs
- Low power consumption of 7 watts
- New gooseneck design with silicone cover
- Lamp head with recessed handle
- Lens removable without the need for tools
- Lamp base with blue rubber ring
- Integrated power supply: AC 220-240 V, 50 Hz, Euro plug
- Well-balanced table-top base
- Colour: White



39254 303

Magnification	Dioptries	Lens Ø mm	Luminous flux lm	39254	...
1.75x	3	100	665		303

39262

LED magnifier lamp TEVISIO

Waldmann **W**

ENGINEER OF LIGHT.

Design

- 48 premium SMD LEDs
- 40% energy saving
- Powerful 6000 lx with only 14 W
- Maintenance-free: LED service life up to 50,000 hours and more
- Dimmable up to 10%
- Structure-emphasised effects at the push of a button
- Approximately twice the magnification by 3.5 dioptries
- Absolutely scratch-resistant magnifying glass

- Large field of vision with a diameter of 153 mm for distortion-free view
- Closed joints protect the cables inside
- Enormous operating radius, unique movable head joint
- Balanced linkage: easily adjustable, can be locked exactly as required

39262



Magnification	Lens Ø mm	39262	...
2x	160		101

69167

Scotch-Brite high-performance cleaning cloth

3M**Design**

- With patented fibre combination of polyester and nylon
- This enables extremely economical cleaning of both aqueous and fatty dirt with little effort
- The grease and dirt absorption is up to 100 times greater than for conventional cleaning cloths
- The cloth is machine washable up to 95°C
- Colour: blue

Applications

- Suitable for all surfaces.
Cleans dry, damp or wet.

69167

Cloth size approx. cm	Pack = pieces	69167	...
36 x 32	5		101



Endoscopes | Inspection cameras

39308

Video endoscope



39308 301

Video endoscope with 4.9 mm Ø probe

Design

- 1 m camera cable with 4.9 mm Ø micro lens, LED light sources and 90° switching function and 0° viewing direction
- Videos and photos can be played back instantly on the TFT monitor
- Date and time can be shown or hidden
- Automatic switch-off function to save energy
- Improved image resolution
- Improved connection between probe and housing (metal) - For adapter for using older probes, see art. no. 39308 206
- One-handed operation of the multifunctional console
- All in one: observation, recording and playback via TFT monitor

2nd generation probe:

- Position of the side LED altered for improved illumination in the 90° function
- Improved LED luminosity
- Simplified handling
- Improved quality of the probe sheath

Scope of delivery:

- Control panel
- 1 m camera cable with probe Ø 4.9 mm
- Hook including magnet
- 4 GB SD card
- 4 x AA batteries
- In plastic case

Applications

For perfect documentation of damage images etc. by recording video and/or taking images. Live observation via the TFT colour display or recording straight to the SD card in the multifunctional console.

Note:

Replacement batteries, see art. no. 39900 303.

39308 301



Probes

39308 203 + 303-306

Individual probes to supplement the Video endoscope

Design

- With metal connector
- Camera resolution: 325 (H) x 250 (V) = 76,800 pixels
- Camera opening angle: horizontal 46°, vertical 34°, diagonal 56°
- Depth of focus: 10 to 60 mm
- Probe length: 1000 mm
- Ambient conditions: 0° to +55°C
- Weight: 220 g

39308 203

Standard probe 5.5 mm Ø

- Camera viewing direction: Straight ahead (front view)
- Light source: 4 dimmable LEDs

39308 304

Semi flexible probe 3.9 mm Ø

- Camera viewing direction: Straight ahead (front view)
- Light source: 3 dimmable LEDs

39308 303

Semi flexible probe 3.9 mm Ø

- Camera viewing direction: 90° – fixed mirror (side view) – no edges in the image
- Light source: 2 dimmable LEDs in 90° direction – no reflection in the mirror

39308 305

Flexible probe 6.0 mm Ø

- Camera viewing direction: Straight ahead (front view)
- Pivot range: 2 x 150°
- Swivel radius: approx. 48 mm
- Probe head can be locked in swivel position
- Probe head: IP 67
- Light source: 4 dimmable LEDs

39308 306

Flexible probe 6.0 mm Ø

- Camera viewing direction: 90° (side view) – no edges in the image
- Pivot range: 2 x 150°
- Swivel radius: approx. 48 mm
- Probe head can be locked in swivel position
- Probe head: IP 67
- Light source: 1 LED in 90° direction

39308 203



39308 304



39308 303



39308 305



39308 306



Probe adapter

39308 206

Probe adapter for old probes

Applications

For older probes (4812-) in conjunction with the video endoscope art. no. 39308 301.

39308 207

Probe adapter for new probes

Applications

For probes, with new, improved connection (4812 N-) in conjunction with the video endoscopes (4812-1/7, 4812-1/6 and 4812-1/8).

39308 206



39308 207



Type	Probe Ø mm	Cable length m	39308	...
Video endoscope (set)	4.9	1		301
Probe, standard	5.5	1		203
Probe, semi-flexible (0°)	3.9	1		304
Probe, semi-flexible (90°)	3.9	1		303
Probe, flexible (0°)	6.0	1		305
Probe, flexible (90°)	6.0	1		306
Adapter for old probes	-	-		206
Adapter for new probes	-	-		207



39317

Inspection camera micro CA-150

RIDGID

39317 401

Inspection camera micro CA-150

Design

- Endoscope with camera Ø 17 mm and 4 adjustable LED lamps
- With 3.5 inch LC display (resolution 320 x 240 pixels) with control panel
- Comfortable pistol grip enables one-handed operation while manoeuvring the camera cable and camera head
- Saves up to 20 images on the internal memory (for direct view or subsequent playback on the camera display)
- Camera head with aluminium housing, rotatable through 360° (4 x 90° steps)
- Semi-flexible 90 cm long cable, with optional accessories can be extended by up to 9 m
- The accessories include a **hook, magnet and mirror attachment**, which are simply attached to the camera head and expand the area of application

Scope of delivery:

- Inspection camera micro CA-150
- Accessory kit, 3 pieces (hook, magnet and mirror attachment)
- RCA cable
- 4 batteries
- In transport case

Applications

For inspecting and problem-solving behind and in objects, walls, cables, lines and other hard-to-reach places.

Note:

Replacement batteries, see art. no. 39900 303.

39317 102-203 + 39318

Accessories for inspection camera micro CA-150



39317 401

Type	Weight approx. kg	39317	...	39318	...
Inspection camera micro CA-150	2.5		401		
Cable extension 90 cm	-		102		
Cable extension 180 cm	-				203
Camera head Ø 6 mm with 100 cm cable	-				105
Camera head Ø 6 mm with 400 cm cable	-				106
Camera head Ø 17 mm	-		203		

39318

Digital inspection camera micro CA-350

RIDGID

39318 201

Digital inspection camera micro CA-350

Design

- Comfortable pistol grip, large screen and simple operation
- **Longer operating time** thanks to 12 V Li-ion battery, as well as **extremely fast charging time** (only 45 minutes)
- Watertight aluminium camera head Ø 17 mm
- 3.5 inch (90 mm) colour TFT
- Dark areas are illuminated with 4 bright LEDs
- The image rotation in 90° steps as well as the digital zoom ensure the best view
- **USB:** Simple transfer of image and video material to your computer or laptop via the mini USB connector
- **Video output (PAL and NTSC):** Live broadcast e.g. on larger monitors or units for even better visibility and detailed observation
- **Saving to SD:** Supports all SD cards up to 32 GB
- **Integrated audio recorder:** Record voice notes or comments on your video recording with the built-in speaker/microphone or headset with microphone
- **Internal memory:** 235 MB

Scope of delivery:

- Inspection camera micro CA-350 with 17 mm camera head
- 12 V Li-ion rechargeable battery
- Charger
- USB cable
- Accessory kit, 3 pieces (hook, magnet and mirror attachment)
- RCA cable
- Power supply unit
- Headset
- 8 GB SD card
- In transport case

Applications

For inspecting and problem-solving behind and in objects, walls, cables, lines and other hard-to-reach places.

39318 104-203

Accessories for inspection camera micro CA-350

39318 104

Accessory kit, 3 pieces consisting of mirror, hook and magnet attachment.



39318 201

Type	Weight approx. kg	39318	...
Inspection camera micro CA-350	0.9		201
Cable extension 180 cm	-		203
Camera head Ø 6 mm with 100 cm cable	-		105
Camera head Ø 6 mm with 400 cm cable	-		106
Accessory kit, 3 pieces	-		104



Stethoscopes | Polyscopes | Microscopes

39325

Automotive stethoscope

Design

- With steel tip
- Tester to locate mechanical damage to the engine

Applications

For reliable fault diagnosis.
Enables sources of error to be pinpointed.

39325



39325

101

88060

Polyscope (listening device)



Design

- Probe tip made of steel
- Handle and sound conduction made of plastic

Applications

For detecting and identifying mechanical damage on all apparatuses and devices with moving parts. Even hard-to-reach places are easy to access.

88060



88060

101

Info

Technical endoscopy MICRO-EPSILON Eltrotec



Endoscopes are high-quality optical devices developed specifically for use in industrial environments. They essentially consist of high-precision optical and mechanical components. Their design and structure make them ideal for applications in industrial environments.

Thanks to a wide product range featuring a variety of functions, a multitude of testing tasks can be performed even on complex objects.

Use focus areas:

- Surface inspection and general maintenance tasks in engine, gearbox, power station and aircraft manufacturing (e.g. detecting cracks, burrs, wear etc.)
- Welding seam checks in cavities (e.g. pipelines)
- Inspections of cast parts (mould residue, scale, completeness)
- Monitoring functions or soldering joints in components for precision and electrical engineering
- Criminology/ballistics (e.g. smoke detection in weapons)

Rigid endoscopes

TOP-LINE rigid endoscopes

- Gradient lenses for image transmission
- 360° panoramic view thanks to mirror tube
- Two versions available as standard
 - with Mini Maglite lighting (halogen)
 - with SuperNova lighting (Xenon)
- No mains power supply required to allow mobile use
- Optional: TV adaptation
- As a complete set:
 - TOP-LINE rigid endoscope
 - 90° mirror tube
 - Mini Maglite or SuperNova light source
 - Robust aluminium case



Model	Probe diameter in mm	Useful length in mm	Mirror tube diameter in mm	Image angle
ProMicroslim	1.85	80/120/180	2.2	40°
Superslim	2.4	120/185	2.77	32°
Slim	4.2	50/180/305/435/560	4.8	42°
Hardy	6.35	180/305/435/560	8.0	50°

Our product portfolio:

Rigid endoscopes

Video endoscopes

Flexible endoscopes

Light sources

Cameras

Monitors



From a simple complete set to a set-up workplace, we can create your individual package according to your needs and requirements. Get in touch.

39326

Stereo microscopes

KERN

39326 101

Type OSF 439

Design

- Practical and robust microscope for school, the workshop and in the laboratory
- Integrated handle and sturdy mechanical stand
- LED incident light and transmitted illumination
- Ergonomically designed work surface
- Interchangeable lens
- Eyepieces fixed in the tube to protect them against damage or loss
- Incl. dust cover and eyepieces

39326 102-103

Type OZL463/OZL464

Design

- The flexible and cost-effective all-rounder with zoom function
- LED incident light and transmitted illumination
- Large working area

33926 104-107

Stereo microscope sets

Design

- Predefined sets, consisting of a stereo microscope head, a universal stand, a holder, ring lighting and a dust cover
- Holder with coarse drive, adjustable rotational strength of the hand wheels
- Simple, practical and cost effective, saves time-consuming configuration work and being spoilt for choice when it comes to combining different components

NEW

39326 101

39326 102-103



39326 104-105

39326 106-107



Model	Tube	Eyepiece	Visual field mm	Lens	Stand	Lighting	39326	...
OSF 439	Binocular	WF 10x/Ø 20 mm	Ø 20	1x/2x/4x	Mechanical	1 W LED (incident light)/0.35 W LED (transmitted light)	101	
OZL 463	Binocular	HWF 10x/Ø 20 mm	Ø 28.6-4.4	0.7x-4.5x	Pillar	3 W LED (incident light)/3 W LED (transmitted light)	102	
OZL 464	Trinocular	HWF 10x/Ø 20 mm	Ø 28.6-4.4	0.7x-4.5x	Pillar	3 W LED (incident light)/3 W LED (transmitted light)	103	
OZM 912	Binocular	HSWF 10x/Ø 23 mm	Ø 32.8-5.1	0.7x-4.5x	Telescopic arm with plate	4.5 W LED ring light	104	
OZM 913	Trinocular	HSWF 10x/Ø 23 mm	Ø 32.8-5.1	0.7x-4.5x	Telescopic arm with plate	4.5 W LED ring light	105	
OZM 952	Binocular	HSWF 10x/Ø 23 mm	Ø 32.8-5.1	0.7x-4.5x	Articulated arm with table clamp	4.5 W LED ring light	106	
OZM 953	Trinocular	HSWF 10x/Ø 23 mm	Ø 32.8-5.1	0.7x-4.5x	Articulated arm with table clamp	4.5 W LED ring light	107	

39327

Accessories for stereo zoom microscopes, art. no. 39326

KERN

39327 101

C mount camera adapter OZB-A4811

Applications

For mounting a camera on a microscope OZL 464 (art. no. 39326 103).

39327 102

C mount camera adapter OZB-A5702

Applications

For mounting a camera on the microscopes OZM 913 (art. no. 39326 105) and OZM 953 (art. no. 39326 107).

39327 103

Tablet camera for microscopes

Design

- With integrated camera for optimal observation as well as digital documentation
- A 2-in-1 solution in digital microscopy as a universal system for all trinocular microscopes with C mount adapters
- Integrated 5 MP camera enables live broadcasting and creation of images and videos for documentation
- Automatic white balance and contrast adjustment
- Integrated interfaces:
- Data storage on a USB stick or SD card

- Connection of a USB mouse
- Transfer of the image to an external display via HDMI
- Transfer of stored data to an external receiver via WiFi

39327 104-105

C mount cameras type ODC-82

Design

- CMOS technology, in combination with USB 2.0 or USB 3.0
- Multilingual camera software Microscope VIS KERN OXM 901
- 1x USB cable (2 m long), various eyepiece adapters and a stage micrometer for calibrating the software

NEW

39327 106

HDMI microscope camera type ODC-851

Design

- Specifically developed for direct HDMI connection to your HDMI-capable playback device
- The images can also be saved directly to the supplied SD card
- Alternatively, a USB 2.0 connection is available for connecting to a laptop or PC via the USB interface

Note:

Please also order the appropriate C mount adapter (see art. no. 39327 101-102).

39327 103



39327 104-105

39327 106



Type	39327	...
C mount camera adapter OZB-A4811	101	
C mount camera adapter OZB-A5702	102	
Tablet camera ODC 241	103	

Type	39327	...
Microscope camera ODC 824	104	
Microscope camera ODC 825	105	
HDMI microscope camera ODC 851	106	

Image viewing system

39319

Software combi package dhs Basic CAM



dhs-Basic CAM

Design

- With C mount thread
- Resolution of 4.92 Mpix
- 1/2 inch sensor
- USB 3.0 interface

Software for image recording and processing:

- Two-dimensional measuring
- Fast live image
- Comprehensive automatic functions for recording
- Clear operating menu
- Management of 300 images and 5 data fields

Modular expansion with software tools:

- Panorama, depth of focus
- Indicative range, HDR
- Welding seam
- Grain size
- Phases and pores
- Digital camera dhs-Basic CAM
- Stage micrometer for calibration
- USB 3.0 connection cable
- Online licensing

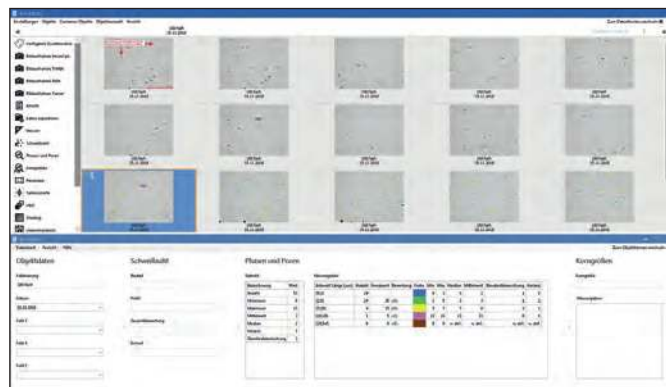


Applications

- For all commercially available microscopes, macroscopes, endoscopes and lenses with C mount thread
- Stand-alone solution for industry, QA, laboratory, teaching and research
- Can be extended for special image analysis applications
- Simple operation and licensing
- Possible to upgrade from pixel-fox to dhs-Basic



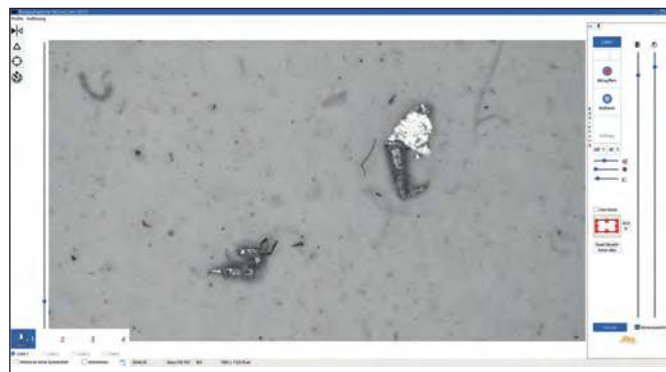
39319



dhs-Basic software with object window and data window in the overview



dhs-Basic image measurement



dhs-Basic image recording

Resolution
Mpix
4.92

39319

...

101

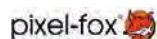


Image management system

Professional, modular, compliant with standards - perfect for a wide variety of tasks in the QA workflow

dhs Image Data Base® is mainly used in QA and laboratory applications. With its wide range of software functions for image archiving, image acquisition, image processing, image analysis and documentation, it can be used for the following applications:

- Incoming goods inspections
- In-production inspections
- Surface assessments
- Particle and pore analyses
- Steel purity determination tests
- Weld seam measurements
- Casting and damage analyses
- Residual dirt analyses and many more



Basic module of the dhs Image Data Base®

Advantages and features of dhs Image Data Base®:

- All test results are professionally reproduced and easy to share
- An interface-independent SQL database that can be adjusted specifically for the application (included in the basic module)
- The system can be adapted to existing organisational units and EDP landscapes
- Stand-alone/network and integrated solutions are available either locally or across multiple sites
- Can be fully programmed to allow customer-specific customisation
- Individual installation service, training and support



Complete image management system with dhs Image Data Base®

Software functions	Archiving	Holder	Processing	Analysis	Documentation	Service
Modules	Licence server	Image acquisition	Image measurement	Surface determination	Report generation	dhs consulting
	Viewer		Panorama image	Grain size	Communication	dhs service contract
	DataImEx		Sharper structure	Cast analysis		Individual programming
			ImageWizard	Particle analysis		Training
			Photo retouching	Coating thickness		Microscope maintenance
			Reference charts	Residual dirt analysis		dhs online support
			HDR	Spherical cap		
				Dendrite arms spacing		
				Steel purity		

Tool presetters

39385

Tool presetters ATORN IC basic

ATORN®

Design

The ImageController basic is a professional entry model to the world of tool presetters. The table-top unit with ImageController basic is simple to operate and returns precise measurement results thanks to thorough checks and high-quality brand components. Pressing the unique EZclick rotary/push-button starts standard measuring functions such as length, diameter, concentricity and axial runout.

Delivery does not include a workbench.

Advantages and benefits for you:

- Speedy familiarisation with minimal training thanks to easy operation
- High-precision spindle SK 50 with integrated calibration balls
- Fast measurement, setting and testing of tools (length and diameter)

- EZmax software function for easy creation of tool contours
- Various measurement programs make it incredibly easy to measure variables such as concentricity and axial runout on the tool blades
- Quick and convenient printing of measurement results on labels (optional)
- One-handed control button for rapid, simultaneous positioning of the Z and X axes
- Data output via RS232 interface

Note:

Cardboard packaging (art. no. 39385 411) is mandatory when ordering a tool presetting device.

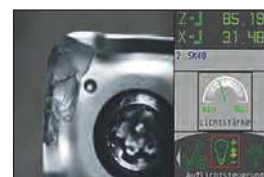
For accessories, see art. no. 39388–39389.


39385 501-503

Type	Measuring range Z axis mm	Measuring range X axis mm	Spindle	39385	...
ATORN IC basic 350	350	320	SK 50	501	
ATORN IC basic 420	420	420	SK 50	502	
ATORN IC basic 600	600	420	SK 50	503	
Equipment table for IC basic	-	-	-	505	NEW

Accessories	39385	...
Pneumatic spindle brake	403	
Pneumatic spindle indexer	404	
Software extension, tool memory	407	
Software extension, measurement programs	408	
Blade inspection with LED incident light	405	

Accessories	39385	...
Software extension, measurement values	406	
Thermal printer for IC basic	412	NEW
Label roll matt white 25 x 75 mm (950 pieces)	413	NEW
Spindle hood for IC basic	410	NEW
Carton packaging for ATORN IC basic 350, 420 and 600	411	


39385 405
39385 412
39384

Tool presetters ATORN IC 1

ATORN®

Design

The ImageController 1 is a professional entry-level model that functions as an excellent introduction to the world of tool presetters. Manufactured using high-quality branded components and subjected to thorough testing, the tool presetter with ImageController 1 is characterised by simple operation without the need for extensive training and by rapid and precise measuring results. Standard measuring functions such as length, diameter, radius, two blade angles, concentricity and axial runout can be selected and performed quickly and easily using the 13.3-inch touchscreen monitor.

Delivery includes a workbench.

Advantages and benefits for you:

- Speedy familiarisation with minimal training thanks to easy operation
- High-precision spindle SK 50 with integrated calibration edge **including** spindle indexing and spindle brake
- Fast measurement, setting and testing of tool blades (length, diameter, radius, two angles)
- EZmax software function for easy creation of tool contours
- Various measurement programmes, e.g. to measure concentricity and axial runout on the tool blades with µm accuracy

- Fast and convenient printing of measurement results on labels
- One-handed control button for rapid, simultaneous positioning of the Z and X axes

Note:

Carton packaging (art. no. 39388 207) is mandatory when ordering a tool presetter.

For accessories, see art. no. 39388–39389.



EZstart:

- Fast and user-independent measuring of several parameters on different tool types: Selection of 16 tool types
- Graphic menu for selecting the tool type


39384 501-504

Type	Measuring range Z axis mm	Measuring range X axis mm	Spindle	Snap gauge mm	39384	...
ATORN IC 1 350	350	320	SK 50	0	501	
ATORN IC 1 420	420	420	SK 50	100	502	
ATORN IC 1 600	600	420	SK 50	100	503	
ATORN IC 1 600/570	600	570	SK 50	0	504	

39386 - 39387

Tool presetters ATORN IC 2

ATORN®

Design

The ImageController 2 measures, stores and documents tool blades in a matter of seconds. It is also possible to save multi-step tools. Image processing using the 13.3 or 24-inch touchscreen monitor of the Image Controller2 is intuitive and guarantees fast and simple measurement procedures.

Delivery includes a workbench.

Advantages and benefits for you:

- Speedy familiarisation with minimal training thanks to easy operation
- High-precision spindle SK 50 with integrated calibration balls including spindle indexer and spindle brake
- Fast measurement, setting and testing of tool blades
- EZmax software function for easy creation of tool contours
- Various measurement programmes, e.g. concentricity and axial runout at the tool cutting edge to accurately measure μm
- Fast and convenient printing of measurement results on labels
- One-handed control button for rapid, simultaneous positioning of the Z and X axes
- Turning centre camera and auto-focus available as options (art. no. 39387 403)
- Data output package available as an option (art. no. 39388 206)

Note:

Cardboard packaging (art. no. 39388 207) is mandatory when ordering a tool presetting device.

For accessories, see art. no. 39388–39389.



39386 501-504

39386 501-504
Design
With 13.3-inch touchscreen



39386 601-604

39386 601-604
Design
With 24-inch touchscreen

Type	Measuring range Z axis mm	Measuring range X axis mm	Spindle	Snap gauge mm	13.3 inch		24 inch	
					39386	...	39386	...
ATORN IC 2 350	350	320	SK 50	0	501		601	NEW
ATORN IC 2 420	420	420	SK 50	100	502		602	NEW
ATORN IC 2 600	600	420	SK 50	100	503		603	NEW
ATORN IC 2 600/570	600	570	SK 50	0	504		604	NEW

39387 403

Auto focus CNC drive for IC 2 spindle

Design

- Automatic focusing of the tool cutting edge by CNC rotation of the spindle to the highest point of the tool cutting edge

Accessories	39387	...
Automatic-focus CNC drive for spindle for ATORN IC 2	403	

39387 403



Accessories for tool presetting devices | Video measuring microscopes

39388

Accessories for tool presetters

ATORN®

Note:
Further accessories deliverable on request.

39388 202

Accessories	39388	...
Optional vacuum clamping device	202	
Uni spindle for power-driven tool clamping	217	NEW
Rotation centre measurement camera for ATORN IC 1/IC 2	205	
Data output package format generator for ATORN IC 2	206	
Post-processor for ATORN IC 2	211	
Barcode printer zidCode	214	NEW
Tool identification with fixed scanner	215	NEW
Tool identification with hand-held scanner	216	NEW
Conditioning unit NL1-G 1/8 inch with pressure reducer	203	
Q-check device maintenance incl. certificate	213	NEW
Cover	212	
Cleaning agent	210	
Work surface with keyboard and mouse	218	NEW
Commissioning/training daily rate in Germany	209	
Cardboard packaging for ATORN IC 1/IC 2	207	
Shipping within Germany	208	


39388 205

39388 206

39389

Adapter for SK 50 tool presetters

ATORN®

Note:
Other adapters (e.g. Capto) deliverable on request.

39389 201-202

Adapter SK 50/steep taper SK

- For mounting tool shanks with steep taper
DIN 69871-1
- Integrated calibration balls

39389 203-209

Adapter SK 50/VDI straight shank with manual tool holder clamp

- For mounting tools with a VDI straight shank
DIN 69880
- Integrated calibration balls

39389 210-216

Adapter SK 50/hollow shank taper HSK with manual offset clamp

- For mounting tool shanks with hollow shank
taper DIN 69893 with and without cooling tube
- Flat contact surface for HSK tool chuck
- Integrated calibration balls

39389 217-220

Adapter SK 50/hollow shank taper HSK without tool clamp

- For mounting tool shanks with hollow shank
taper DIN 69893
- Flat contact surface for HSK tool chuck
- Integrated calibration balls

Size	39389	...
SK 30	201	
SK 40	202	
VDI 16	203	
VDI 20	204	
VDI 25	205	
VDI 30	206	
VDI 40	207	
VDI 50	208	
VDI 60	209	
HSK A25-F32	210	
HSK A32-F40	211	
HSK A40-F50	212	
HSK A50-F63	213	
HSK A63-F80	214	
HSK A80-F100	215	
HSK A100-F125	216	
HSK A32-F40	217	NEW
HSK A40-F50	218	NEW
HSK A50-F63	219	NEW
HSK A63-F80	220	NEW

39389 201-202
39389 203-209

39389 210-216
39389 217-220


39392

Video measuring microscope

ATORN®

39392 101-104

39392 101-104

Video measuring microscope

Design

- Precision measuring table
- Quick adjustment with friction drive
- Innovative measuring software, easy to use without submenus
- 23 inch touchscreen monitor
- Four-segment LED ring light for individual lighting scenarios
- Windows 10 operating system
- M3 measuring software for automatic edge detection
- Clear geometry functions
- Individual lighting control
- Live image display during measuring
- Saving of images
- Free axis alignment

Scope of delivery:

Video measuring microscope with 23 inch touchscreen PC, keyboard, mouse, calibration certificate and operating instructions.

Applications

For optical measurement of complex workpieces, which would be extremely difficult or impossible to measure by tactile means. Can be used universally in the measuring room and in production.

39392 201

Z-axis measuring system

39392 202

dxf software module

Applications

For importing CAD data.

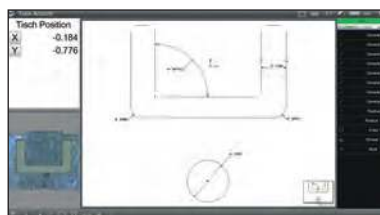
39392 203

Calibration standard (circles/scale)

- 50 mm
- Without certificate

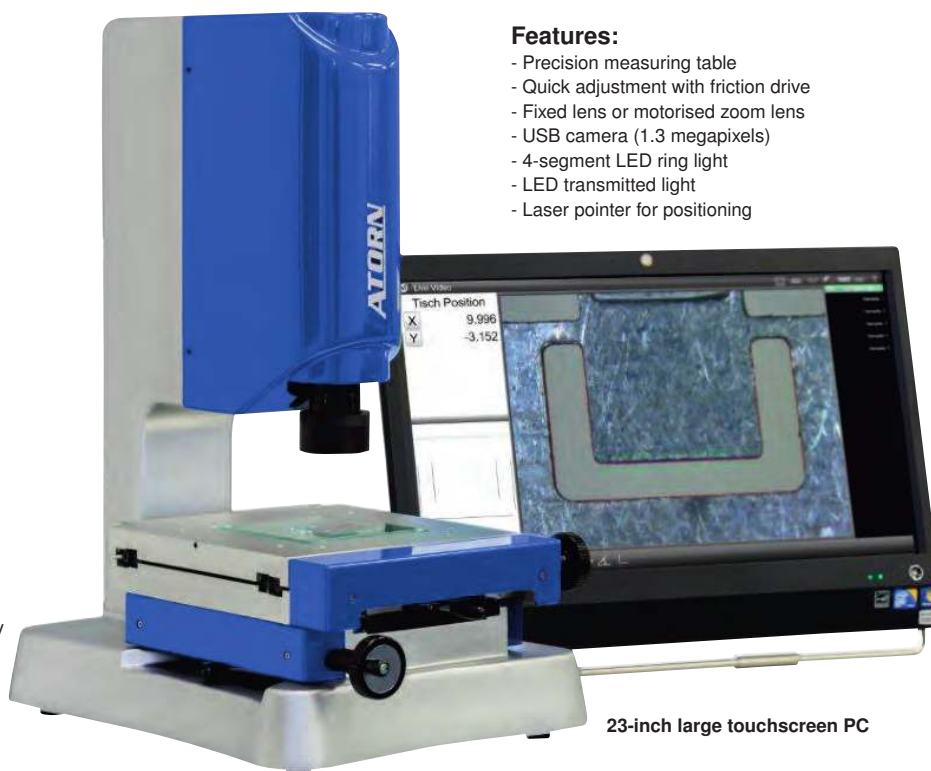
M3 Measuring software

- Simple and intuitive software operation without submenus
- Automatic edge detection
- Clear geometry functions
- Live image
- Data export in different formats
- USB interface



Features:

- Precision measuring table
- Quick adjustment with friction drive
- Fixed lens or motorised zoom lens
- USB camera (1.3 megapixels)
- 4-segment LED ring light
- LED transmitted light
- Laser pointer for positioning



23-inch large touchscreen PC

Note:

We would be happy to send you the operating instructions as well as detailed technical information.

Please contact us.

39392 203



Technical data:	39392 101-102	39392 103-104
Error limits:	E1 = 1.5 + L/100 (L in mm) E2 = 2.9 + L/100 (L in mm)	E1 = 1.5 + L/100 (L in mm) E2 = 2.9 + L/100 (L in mm)
Camera:	USB 2.0, 25 images/s, 1.3 megapixels	USB 2.0, 25 images/s, 1.3 megapixels
Lens:	40x fixed	Zoom 35-225x
Image section:	8 mm	9 mm-1.5 mm
Incident light:	4-segment LED ring light	4-segment LED ring light
Transmitted light:	LED	LED
Positioning aid:	Laser pointer	Laser pointer
Max. table load:	20 kg	20 kg

Measuring range X, Y, Z axis mm	Lens	Magnification	39392	...
100 x 100 x 100	Fixed lens	40x		101
200 x 100 x 100	Fixed lens	40x		102
100 x 100 x 100	Motorised zoom lens	34-225x		103
200 x 100 x 100	Motorised zoom lens	34-225x		104
Z axis measuring system	-	-		201
dxf software module	-	-		202
Calibration standard	-	-		203

ATORN®

Design

- Precision measuring table
- Innovative measuring software, easy to use without submenus
- 23 inch touchscreen monitor
- Four-segment LED ring light for individual lighting scenarios
- Windows 10 operating system
- M3 measuring software for automatic edge detection
- Clear geometry functions
- Individual lighting control
- Live image display during measuring
- Saving of images
- Free axis alignment
- Motorised control of the 3 axes by joystick
- Z axis measuring system enables depth measurement using depth of focus
- Simple creation of measurement programmes even for complex workpieces

M3 Measuring software

- Simple, intuitive software operation without submenus
- Automatic edge detection
- Clear geometry functions
- Live image
- Data export in different formats
- USB interface

Scope of delivery:

- Video measuring microscope with 23-inch touchscreen PC
- Keyboard with mouse
- Calibration certificate
- Operating instructions

Applications

For optical measurement of complex workpieces, which would be extremely difficult or impossible to measure by tactile means. Can be used universally in the measuring room and in production.

Note:

Can be supplied with dxf software module for measuring against CAD data as an option, see art. no. 39392 202.
We would be happy to send you the operating instructions as well as detailed technical information.



39392 301

Technical data:

Error limits:	E1 = 1.5 + L/100 (L in mm) E2 = 2.9 + L/100 (L in mm)
Camera:	USB 2.0, 25 images/s, 1.3 megapixels
Lens:	35–225x zoom
Image section:	9 mm–1.5 mm
Incident light:	4-segment LED ring light
Transmitted light:	LED
Positioning aid:	Laser pointer
Max. table load:	20 kg

Measuring range X, Y, Z axis mm	Lens	Magnification	39392	...
200 x 100 x 100	Motorised zoom lens	34–225x		301