

39510 - 39513 Folding rules



39510 101

Design

- Made of beech wood
- Black double millimetre graduation
- Red decimal numbers
- Brass-plated steel springs
- 3 mm thick sections
- Weather-resistant special paint
- Colour: yellow
- **EC precision class III**

39510 102

Design

- 3 mm thick sections made of copper beech
- Red decimal numbers
- Double-sided cm and mm scale on both edges
- Built-in steel springs ensure smoothness and unsurpassed durability of the folding rule
- **EC precision class III**

39512

Design

- Made from aluminium
- Numbers and graduation etched in deep black
- Nickel-plated steel springs
- 1.4 mm thick sections
- Spring-tempered special paint, aluminium-coloured
- **EC precision class II**

39513

Design

- Plastic folding rule **-LONGLIFE-**, white, made of fibreglass-reinforced polyamide
- Joints engage at right angles
- Etched graduation with red decimal numbers
- **EC precision class III**

39513 104

Design

- Additional markings in the opposite direction on the reverse to ensure easy reading in unfavourable working conditions

39510 101



39510 102



39512 103



39513 104



Length m	Width mm	Number of sections	39510	...	39512	...	39513	...
1	13	10						101
1	16	6		101				
2	14	10				103		
2	16	10	102					104

39515

Folding rule



Design

- Made of beech wood
- With mm graduation
- Rule thickness 3.0 mm
- Inner plastic joints with additional angle scale
- **EC precision class III**

Advantage:

Makes measuring and reading significantly easier. With a standard folding rule, you have to calculate backwards from 200 cm when reading the scale on the reverse side. This is time-consuming and can lead to calculation errors. **The parallel graduation on the front and reverse reliably prevents reading errors.**

39515



Length m	Width mm	Number of sections	39515	...
2	16	10		101

Info

Added value of the ATORN folding rule (art. no. 39515)

Traditional folding rule:



Precise positioning of the rule is not possible.



Reading of the scale is inaccurate and can lead to errors.

ATORN folding rule:



Thanks to the parallel graduation, you can read the measurements as usual and place the rule flat and securely.

Reading errors and tolerances are thus effectively avoided.

ATORN® Leistung braucht Qualität.

Pocket tape rules

39517

Pocket tape rules BMImeter

BMI

Design

- Stainless steel tape, painted white
- With tape stopper
- **Special treatment of the stainless steel tape ensures that it rolls out on its own**
- Fully waterproof

- Unbreakable, durable
- Very compact, light and practical
- Ideal for use as a ruler
- Tape lies flat on the table, enabling measurements to be transferred easily
- With belt clip
- **EC precision class II**

Length m	Tape width mm	39517	...
2	16		101
3	16		102



39517

39527

Pocket tape rule

STANLEY

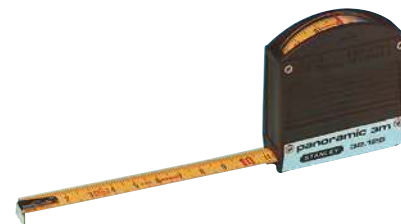
Type Panoramic

Design

- The lower part of the housing features additional protection in the form of a U-shaped aluminium strip
- Direct readout of the internal dimensions in the viewing window
- Painted steel tape

- End angle can be adjusted around the material thickness to prevent measuring errors when applying or attaching the tape
 - Millimetre graduation at top and bottom
 - **EC precision class II**
- Applications**
For external and internal measurements.

Length m	Tape width mm	39527	...
3	12.7		102



39527

39530

Pocket tape rule

BMI

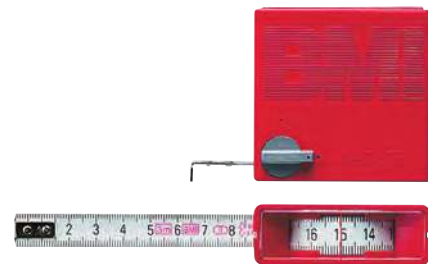
Design

- Highly impact-resistant ABS plastic housing
- Free running tape with locking device, made of the best spring steel, white stove-enamelled
- Millimetre graduation at top and bottom
- **EC precision class II**

Applications

For external and internal measurements; internal measurements are read directly in the viewing window.

Length m	Tape width mm	39530	...
3	13		101



39530

39531

Pocket tape rules

BMI

Design

- Housing made of polyamide with stainless steel base
- Internal measuring tape without locking device (free-running tape in pull-push design)

- Viewing window with magnifying glass effect, graduation is not upside down (no reading errors)
- Millimetre graduation at top and bottom
- **EC precision class II**

Length m	Tape width mm	39531	...
2	13		101
3	13		102



39531

39534

Pocket tape rules

BMI

Design

- Housing made from fibreglass-reinforced polyamide
- **Stainless steel tape design** for special applications
- The tape, retraction spring and end hook are all completely rustproof

- Stainless steel with black millimetre graduation at top and bottom
- Automatic tape return with stop button
- **EC precision class II**

Applications

For external and internal measurements.

Length m	Tape width mm	39534	...
2	13		101
3	13		102
5	16		103



39534

39533 Pocket tape rules



Design

- Impact-resistant ABS plastic housing
- With durable tape mechanics
- Automatic tape return with stopper
- Tape with additional wear protection
- Millimetre graduation at top and bottom
- With belt clip
- **EC precision class II**

Applications

For external and internal measurements.



39533

Length m	Tape width mm	39533	...
3	16		101
5	19		102
8	25		103



39539 Pocket tape rules



Design

- Robust and ergonomic housing made of ABS plastic
- Automatic tape locking by pressing the stop button (self-lock system)

- Durable tape return
- Millimetre graduation at top and bottom
- Steel tape painted white, polyamide-coated for optimum protection properties
- With practical belt loop
- **EC precision class II**



39539

Length m	Tape width mm	39539	...	With magnet	
				39539	...
3	16		101	201	NEW
5	19		102	202	NEW
8	25		103	203	NEW

39545 Pocket tape rules POWERLOCK



Design

- With locking device, automatic tape return and removable belt clip
- Yellow painted steel tape, printed in two colours
- **MYLAR coating** for durability, protects against corrosion, scratching and chemicals
- **EC precision class II**

39545 102

Design

- Metal housing
- Millimetre graduation at top and bottom
- Extra stable



39545

39545 104-107

Design

- Plastic housing
- Millimetre graduation at top and bottom
- Triple riveted end hook prevents the hook breaking off
- Greater tape widths offer higher kink resistance
- **10 m in length with buffer system**

Applications

For external and internal measurements.

Length m	Tape width mm	Housing	39545	...
3	12.7	Metal		102
5	19.0	Plastic		104
5	25.0	Plastic		105
8	25.0	Plastic		106
10	25.0	Plastic		107

39548 Pocket tape rules twoCOMP



Design

- Impact-resistant ABS plastic housing
- With durable tape mechanics and belt clip
- Easy-to-hold soft components for secure handling
- With tape stop and automatic soft tape return

- Tape measure with sliding end hooks for internal and external measurements
- Continuous mm graduation at the top and bottom
- Steel tape, white, polyamide-coated
- **EC precision class I**



39548

Length m	Tape width mm	39548	...
3	16		101
5	19		102
8	25		103
10	25		104



Marking gauges | Capsule roll tape measures

39550

Marking gauges TALMETER

Design

- The TALMETERskala is a self-winding steel tape that can be stopped automatically at any length with a retention force of approximately 5 kp (50 N)
- With ABS housing
- Easily adjustable, 100 mm long measuring tongue, enables internal measurements to be taken with the same precision and lightness as **external measurements**
- Scale in mm
- Combined measuring and marking-off blades made from thin, hardened steel makes pencils superfluous
- Marking even possible on steel
- **Accuracy of the graduation 0.3 mm** on the entire length of the scale
- **Reading of measurements without angle errors**
- Diameter of pipes or cylinders can be read using the Pi scale

Applications

Can be used as an internal measurement tool, parallel marker and special compass. The tool - rather than the eye - determines the accuracy both when marking off and when measuring. When measuring with **TALMETER**, the length of the tool is registered and automatically retained. When marking off, the length is transferred to the workpiece using the tool. The **TALMETER** can also be used as a special compass for marking off measurements (with the edge of the workpiece as centre). Each of the 3 edges can be used as a scoring blade or centre.

Note:

The tape and measuring tab can be replaced and are available as spare parts.

The measured or set length is retained by the automatic lock. This enables the measurement to be transferred directly to the desired material without reading off.

Using the folding measuring tab, internal measurements can be made as simply as external measurements. The tab is easy to fold out and lock with the handy slide.



The combined marking and measuring edges are used for measuring and marking lengths as well as for marking off arcs.

The reading pointer makes it easier to set and read from the tape measure.

White, impact-resistant steel tape with measuring scale for internal and external measurements at the top and a diameter scale at the bottom. Scale applied using inkjet technology and protected with an anti-reflection polyester lacquer.

Length m	Tape width mm	Curve mm	39550	...
2	16	1.5		201
3	16	1.5		202
6	25	1.5		203

39555 - 39561 Capsule roll tape measure -RADIUS-



Design

- With FLEXTOP start fitting, which reliably prevents breaking at the start of the tape
- Highly impact-resistant plastic capsule
- Soft finish surface improves grip on the capsule body
- Good handling thanks to large crank arm, foldable
- Tape-protecting parking position for the pull ring
- Crank arm can be mounted on both sides for right-handed and left-handed users
- **Tolerance in accordance with EC precision class II** (+/- 2.3 mm on 10 m length)

39555

Stainless steel tape

PONTARIT

Design

- **cm graduation on one side**
- Cold-worked spring tape made of chrome-nickel steel
- Matt-stained surface
- Printed graduation with red metre markings, fired
- Synthetic resin paint provides wear protection, fired

39557

Steel tape, painted white

Design

- **mm graduations on one side**
- Hardened spring tape made of carbon steel C75
- Phosphate coating for corrosion protection
- White synthetic resin paint, fired
- Printed graduation with red metre markings, fired
- Synthetic resin paint provides wear protection, fired and non-reflective

39559

Steel tape, polyamide-coated ISOLAN

Design

- **mm graduations on one side**
- Hardened spring tape made of carbon steel C75
- Phosphate coating for corrosion protection
- Yellow synthetic resin paint, fired
- Printed graduation with red metre markings, fired
- All-round polyamide coating provides high-quality wear protection
- Largely protected against breakage, alkalis, salt solutions, greases, oils and diluted acids

39561

Fibreglass tape, yellow

Design

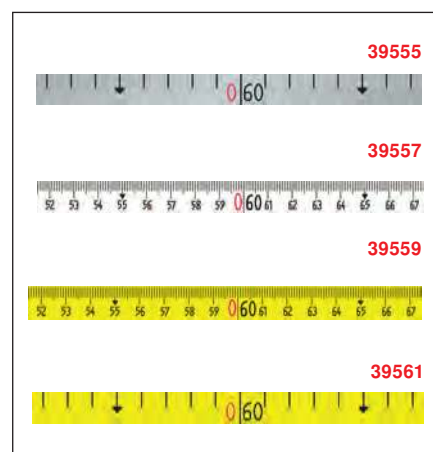
- **cm graduation on both sides**
- Fibreglass filaments
- Extruded plastic sheath
- Printed graduation with red metre markings
- Synthetic resin paint for wear protection
- Highly flexible, non-conductive, resistant to water and virtually all chemicals



39555 - 39561



Crank arm can be mounted on both sides for right-handed and left-handed users



Length m	Tape width mm	Stainless steel		Steel, white		Steel, polyamide		Fibreglass tape	
		39555	...	39557	...	39559	...	39561	...
10	13			101		101		101	101
20	13			102		102		102	102
30	13			103		103		103	103
50	13			104					

39563 Capsule roll tape measures



Design

- **Steel tape, painted white**
- **mm graduations on one side**
- Hardened spring tape made of carbon steel C75
- Phosphate coating for corrosion protection
- White synthetic resin paint, fired
- Printed graduation with red metre markings, fired
- Synthetic resin paint provides wear protection, fired
- Plastic capsule
- ABS plastic housing
- Crank mechanism made of polyamide
- With carry strap
- **Tolerance in accordance with EC precision class II** (+/- 2.3 mm on 10 m length)

39563



Length m	Tape width mm	39563	
	
10	10		101
20	10		102



39570 - 39576 Frame roll tape measures -ERGOLINE-



Design

- With FLEXTOP start fitting, which reliably prevents breaking at the start of the tape
- Optimal tape guidance thanks to robust, silver-coloured anodised aluminium rails, easy to replace
- Ergonomic pistol grip to relieve the wrist, with soft rubber nubs for secure grip
- Convenient winding mechanism with ball bearing that is sealed against dirt
- Robust, removable crank arm, foldable
- Tape-protecting parking position for the pull ring
- Crank arm can be mounted on both sides for right-handed and left-handed users
- Tolerance in accordance with EC precision class II (+/- 2.3 mm on 10 m length)

39570

Stainless steel tape

PONTARIT

- Tape width 13 mm
- mm graduations on one side
- Straight frame
- Cold-worked spring tape made of chrome-nickel steel
- Matt-stained surface
- Printed graduation with red metre markings, fired
- Synthetic resin paint provides wear protection, fired

39572

Steel tape, painted white

- Tape width 13 mm
- mm graduations on one side
- Straight frame
- Hardened spring tape made of carbon steel C75
- Phosphate coating for corrosion protection
- White synthetic resin paint, fired
- Printed graduation with red metre markings, fired
- Synthetic resin paint provides wear protection, fired and non-reflective

39574

Steel tape, polyamide-coated ISOLAN

- Tape width 13 mm
- mm graduations on one side
- Hardened spring tape made of carbon steel C75
- Phosphate coating for corrosion protection
- Yellow synthetic resin paint, fired
- Printed graduation with red metre markings, fired
- All-round polyamide coating provides high-quality wear protection
- Largely protected against breakage, alkalis, salt solutions, greases, oils and diluted acids

Note:

Art. no. 39574 101 with **straight frame**,
Art. no. 39574 103-104 with **V frame**.

39576

Fibreglass tape, yellow

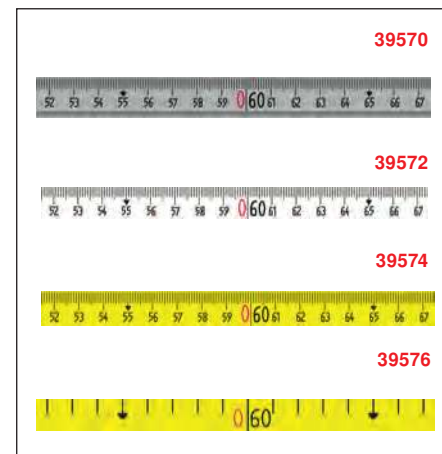
- Tape width 13 mm
- cm graduation on one side, mm graduation on the other
- V frame
- Fibreglass filaments
- Extruded plastic sheath
- Printed graduation with red metre markings
- Synthetic resin paint for wear protection
- Highly flexible, non-conductive, resistant to water and virtually all chemicals



Crank arm can be mounted on both sides for right-handed and left-handed users



39570 - 39574



39570

39572

39574

39576

39574 - 39576



Length m	Tape width mm	Stainless steel		Steel, white		Steel, polyamide		Fibreglass tape	
		39570	...	39572	...	39574	...	39576	...
20	13							101	
25	13			102		102			
30	13			103		103		103	103
50	13			104				104	104

39580

Circumference tape measures

Design

- Millimetre scale
- Cover plate with vernier scale reading 0.1 mm
- Accuracy according to factory standard
- Laser-divided graduation

Applications

For simultaneous measurement of the circumference and diameter of all round elements, e.g. gravure cylinders.

Quality

Spring steel, with etched graduation.

Note:

Larger diameter and rustproof version deliverable on request.



39580



Measuring range scope mm	Measuring range Ø mm	Tape width mm	39580	...
60 - 950	20 - 300	10		101
940 - 2200	300 - 700	10		102
2190 - 3460	700 - 1100	15		103

39799

Precision rulers

Design

- Matt, glare-free surface
- Scaling deeply etched and black chrome plated
- Graduation at the top and bottom 1/1 mm

Quality

Rustproof stainless steel.

39799



Length mm	Width x thickness mm	39799	...
150	13 x 0.3		101
200	13 x 0.3		102
300	13 x 0.3		103
500	18 x 0.5		104
1000	18 x 0.5		105

39800 - 39803

Flexible rulers

BMI

Design

- Deep black graduation, largely resistant to oils, greases and virtually all chemicals
- Rounded edges
- With hanging eyelet
- EC precision class II

39803

Design

Graduation on one side, top 1/2 mm, bottom 1/1 mm.

39800 - 39803



39800

Design

Graduation on both sides, front side top 1/2 mm, bottom 1/1 mm, rear side top and bottom 1/1 mm.

Quality

Stainless, hard-rolled spring steel with matt surface.

Length mm	Width x thickness mm	One-sided graduation		Double-sided graduation	
		39803	...	39800	...
150	13 x 0.5		102		101
200	13 x 0.5		103		102
300	13 x 0.5		105		104
500	18 x 0.5		107		105
1000	18 x 0.5		108		106

39805 - 39807

Flexible rulers



HELIOS-PREISSER

Design

- With lasered graduation and numbering
- With hanging eyelet
- EC precision class II

39805

Graduation at the top and bottom 1/1 mm.

39805



39807

Graduation top 1/2 mm, bottom 1/1 mm.

39807



Quality

Stainless spring steel, brushed chromium-plated.

Length mm	Width x thickness mm	39805		39807	
	
150	13 x 0.5				101
300	15 x 0.5				103
300	30 x 1.0				104
500	20 x 0.5				105
500	30 x 1.0				106
1000	20 x 0.5				107
1000	30 x 1.0				108
1500	35 x 1.3			109	
2000	35 x 1.3			110	

39814 - 39815

Working rulers DIN 866/B

Design

- Top edges and flat sides ground
- Lasered 1/1 mm graduation

39815



Length mm	Width x thickness mm	Normal steel		Stainless steel	
		39814	...	39815	...
500	25 x 5			101	101
1000	30 x 6			102	102
1500	30 x 6			103	103
2000	40 x 8			104	104
3000	40 x 5			105	105
4000	50 x 10			106	106
5000	60 x 12			107	107
6000	70 x 15			108	108

Rulers | Batteries

39821

Light metal rulers

ATORN®

Quality
Aluminium profile drawn, anodised.

39821

Design

- With glare-free 1/1 mm graduation and Indian ink edge
- Rust-proof
- **EC precision class II**



Length mm	Width x thickness mm	39821	...
300	50 x 5		101
400	50 x 5		102

Length mm	Width x thickness mm	39821	...
600	50 x 5		103
1000	50 x 5		104

39824 - 39825

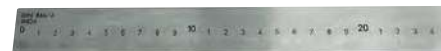
Test rulers DIN 866/A

Design

- Flat sides ground
- Top edges finely ground
- Protective ends on both sides
- Lasered 1/1 mm graduation

Note:
Can also be used as a ruler

39825



Length mm	Width x thickness mm	Normal steel		Stainless steel	
		39824	...	39825	...
500	30 x 6		101		101
1000	40 x 8		102		102
1500	40 x 8		103		103
2000	50 x 10		104		104

Length mm	Width x thickness mm	Normal steel		Stainless steel	
		39824	...	39825	...
3000	50 x 10		105		105
4000	60 x 12		106		106
5000	70 x 14		107		107
6000	80 x 15		108		108

Info

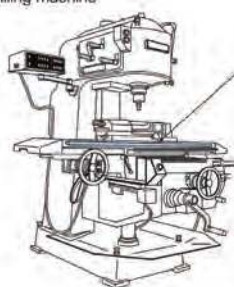
Rulers for digital displays

Magnescale

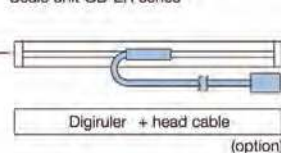
- Magnet technology
- Excellent resistance in workshop conditions
- Resistant to oil, dirt, vibration and shocks (IP 54)
- Compact design
- **Precision:** +/- 5 µm
- **Resolution:** 0.5 µm
- **Measuring length:** 50 to 2200 mm
- The same coefficient of thermal expansion as machine tools



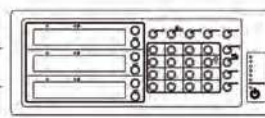
Milling machine



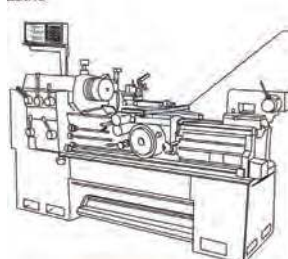
Scale unit GB-ER series



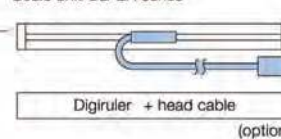
Counter LH70/71 series



Lathe



Scale unit GB-ER series



Counter LH70/71 series

