

## Bilz-Products in application

### Roll Grinding Machine NAXOS W500

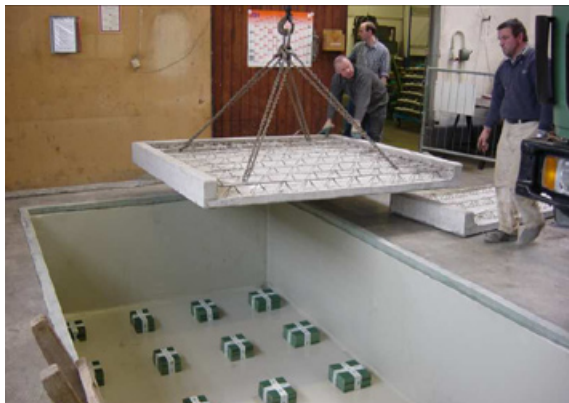
Machine weight including workpiece  
approx. 12 tons  
Foundation block:  
5.0x2.25x1.0 m;  
approx. 28 tons

### Equipment:

BILZ® Elastomer Plate Set B13-W(6)/B8  
incl. static calculations and all technical  
drawings.

### Special Requirement:

Floor vibrations caused by operation of  
cranes, forklifts, and movement of heavy  
steel coils, etc. in a frequency range of more  
than 20 Hz were to be reliably insulated.  
Maximal foundation deflection: 0.1 mm/m.



Böblinger Str. 25  
D-71229 Leonberg

T: +49 (0) 71 52 30 91-0  
F: +49 (0) 71 52 30 91-10  
E: [info@bilz.ag](mailto:info@bilz.ag)  
W: [www.bilz.ag](http://www.bilz.ag)